

# Anti-Phospho-RPA2 (T21) Recombinant Rabbit Monoclonal Antibody



**Catalog #: 1123**

## Aliases

RPA2; Replication Protein A2; Replication Protein A 32 KDa Subunit; Replication Protein A 34 KDa Subunit; Replication Factor A Protein 2; RF-A Protein 2; RP-A P32; RP-A P34; REPA2; RPA32; Replication Protein A2 (32kD); Replication Protein A2, 32kDa; RPA34

## Background

Gene Name: RPA2

NCBI Gene Entry: [6118](#)

UniProt Entry: [P15927](#)

## Application Information

Molecular Weight: Predicted, 29 kDa; observed, 29 kDa

Clonality: Rabbit monoclonal antibody

Clone ID: 23GB1950

Species Reactivity: Human, mouse, rat

Applications Tested: Western blotting (WB), flow cytometry (FCM), immunocytochemistry (IC)

## Immunogen

A synthesized peptide derived from human Phospho-RPA2 (T21)

## Isotype

Rabbit IgG

## Storage Buffer

Supplied in PBS (pH 7.4) containing 50% glycerol, and 0.02% sodium azide.

## Storage

Store at -20 °C for one year.

## Recommended Dilutions

Western Blotting (WB): 1:2,000-1:10,000

Flow Cytometry (FCM): 1:2,000

Immunocytochemistry (IC): 1:100-1:1,000

**Note:** This product is for research use only.

---

### SUPPORT

SUPPORT@GENUINBIOTECH.COM  
TEL: +1-540-855-7041

### ORDERS

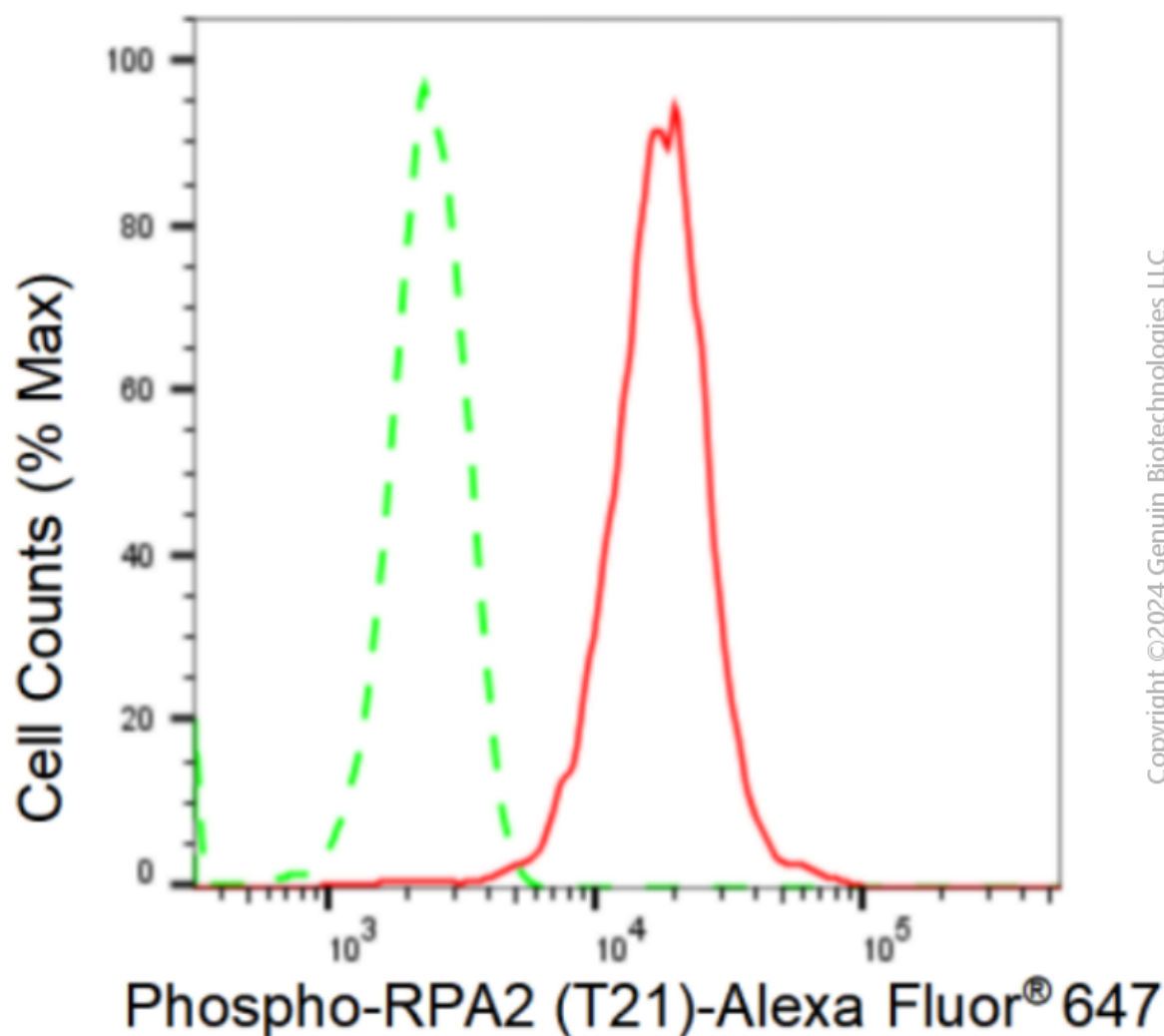
SALES@GENUINBIOTECH.COM  
FAX: +1-540-855-7041

[WWW.GENUINBIOTECH.COM](http://WWW.GENUINBIOTECH.COM)

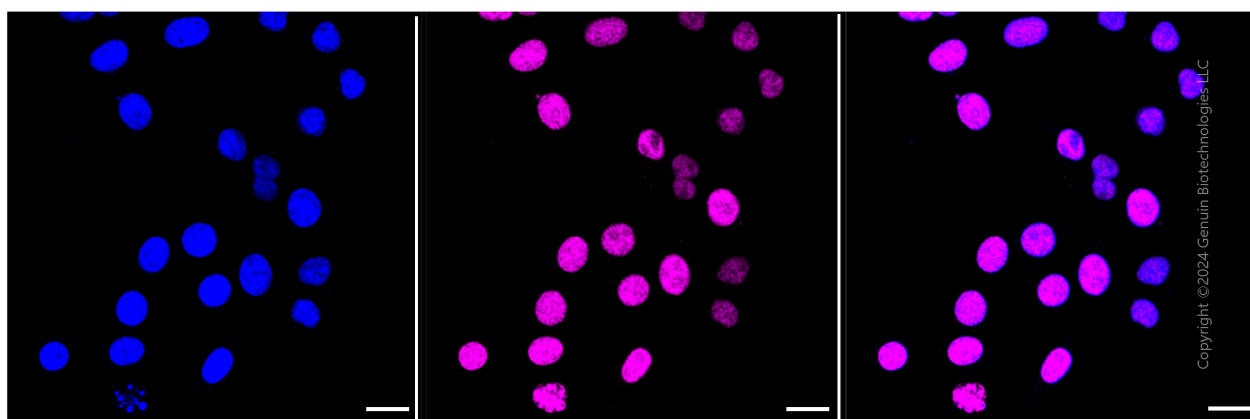
# Anti-Phospho-RPA2 (T21) Recombinant Rabbit Monoclonal Antibody

PAGE 2

## Validation Data



Flow cytometric analysis of Phospho-RPA2 (T21) expression in HepG2 cells using Phospho-RPA2 (T21) antibody (Cat#1123, 1:2,000). Green, isotype control; red, Phospho-RPA2 (T21).



### SUPPORT

SUPPORT@GENUINBIOTECH.COM  
TEL: +1-540-855-7041

### ORDERS

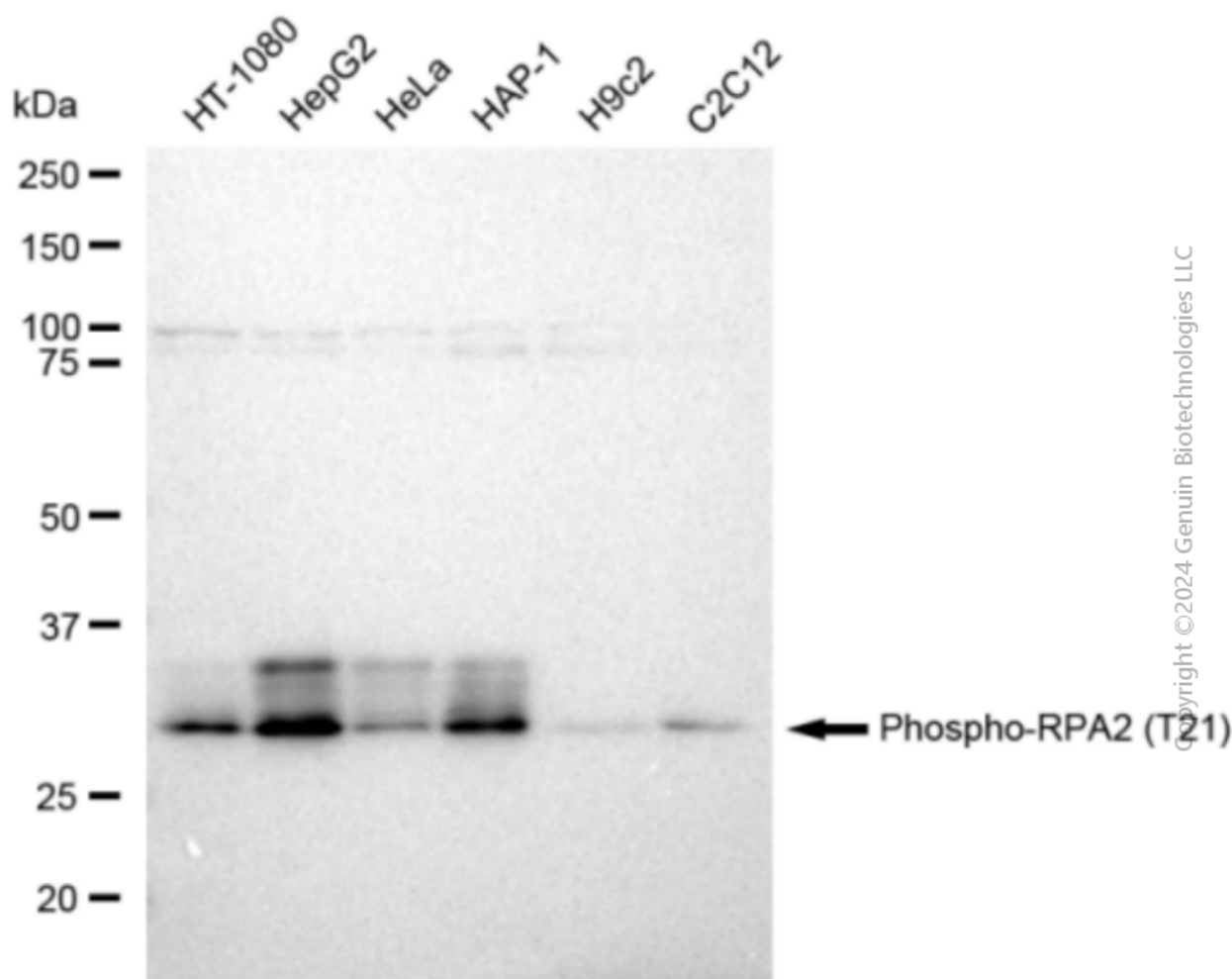
SALES@GENUINBIOTECH.COM  
FAX: +1-540-855-7041

WWW.GENUINBIOTECH.COM

## Anti-Phospho-RPA2 (T21) Recombinant Rabbit Monoclonal Antibody

PAGE 3

Immunocytochemical staining of HepG2 cells with Phospho-RPA2 (T21) antibody (Cat#1123, 1:1,000). Nuclei were stained blue with DAPI; Phospho-RPA2 (T21) was stained magenta with Alexa Fluor® 647. Images were taken using Leica stellaris 5. Protein abundance based on laser Intensity and smart gain: Medium. Scale bar: 20  $\mu$ m.



Western blotting analysis using anti-Phospho-RPA2 (T21) antibody (Cat#1123). Total cell lysates (30  $\mu$ g) from various cell lines were loaded and separated by SDS-PAGE. The blot was incubated with anti-Phospho-RPA2 (T21) antibody (Cat#1123, 1:10,000) and HRP-conjugated goat anti-rabbit secondary antibody (Cat#201, 1:20,000) respectively. Image was developed using FeQ™ ECL Substrate Kit (Cat#226).

### SUPPORT

SUPPORT@GENUINBIOTECH.COM  
TEL: +1-540-855-7041

### ORDERS

SALES@GENUINBIOTECH.COM  
FAX: +1-540-855-7041

WWW.GENUINBIOTECH.COM