

Anti-PRPF8 Recombinant Rabbit Monoclonal Antibody



Catalog #: 1134

Aliases

PRPF8; Pre-mRNA Processing Factor 8; PRPC8; SNRNP220; Pre-mRNA-Processing-Splicing Factor 8; 220 KDa U5 SnRNP-Specific Protein; Splicing Factor Prp8; PRP8 Homolog; HPRP8; PRP8; RP13; P220; U5 SnRNP-Specific Protein (220 KD), Ortholog Of S. Cerevisiae Prp8p; PRP8 Pre-mRNA Processing Factor 8 Homolog (S. Cerevisiae); PRP8 Pre-mRNA Processing Factor 8 Homolog (Yeast); PRP8 Pre-mRNA Processing Factor 8 Homolog; Precursor mRNA Processing Protein; Apoptosis-Regulated Protein 1; Apoptosis-Regulated Protein 2; HPrp8; Prp8

Background

Gene Name: PRPF8

NCBI Gene Entry: [10594](#)

UniProt Entry: [Q6P2Q9](#)

Application Information

Molecular Weight: Predicted, 274 kDa; observed, 274 kDa

Clonality: Rabbit monoclonal antibody

Clone ID: 23GB1995

Species Reactivity: Human, mouse, rat

Applications Tested: Western blotting (WB), flow cytometry (FCM), immunocytochemistry (IC)

Immunogen

A synthesized peptide derived from human PRPF8

Isotype

Rabbit IgG

Storage Buffer

Supplied in PBS (pH 7.4) containing 50% glycerol, and 0.02% sodium azide.

Storage

Store at -20 °C for one year.

Recommended Dilutions

Western Blotting (WB): 1:1,000-1:5,000

Flow Cytometry (FCM): 1:2,000

Immunocytochemistry (IC): 1:100-1:1,000

SUPPORT

SUPPORT@GENUINBIOTECH.COM
TEL: +1-540-855-7041

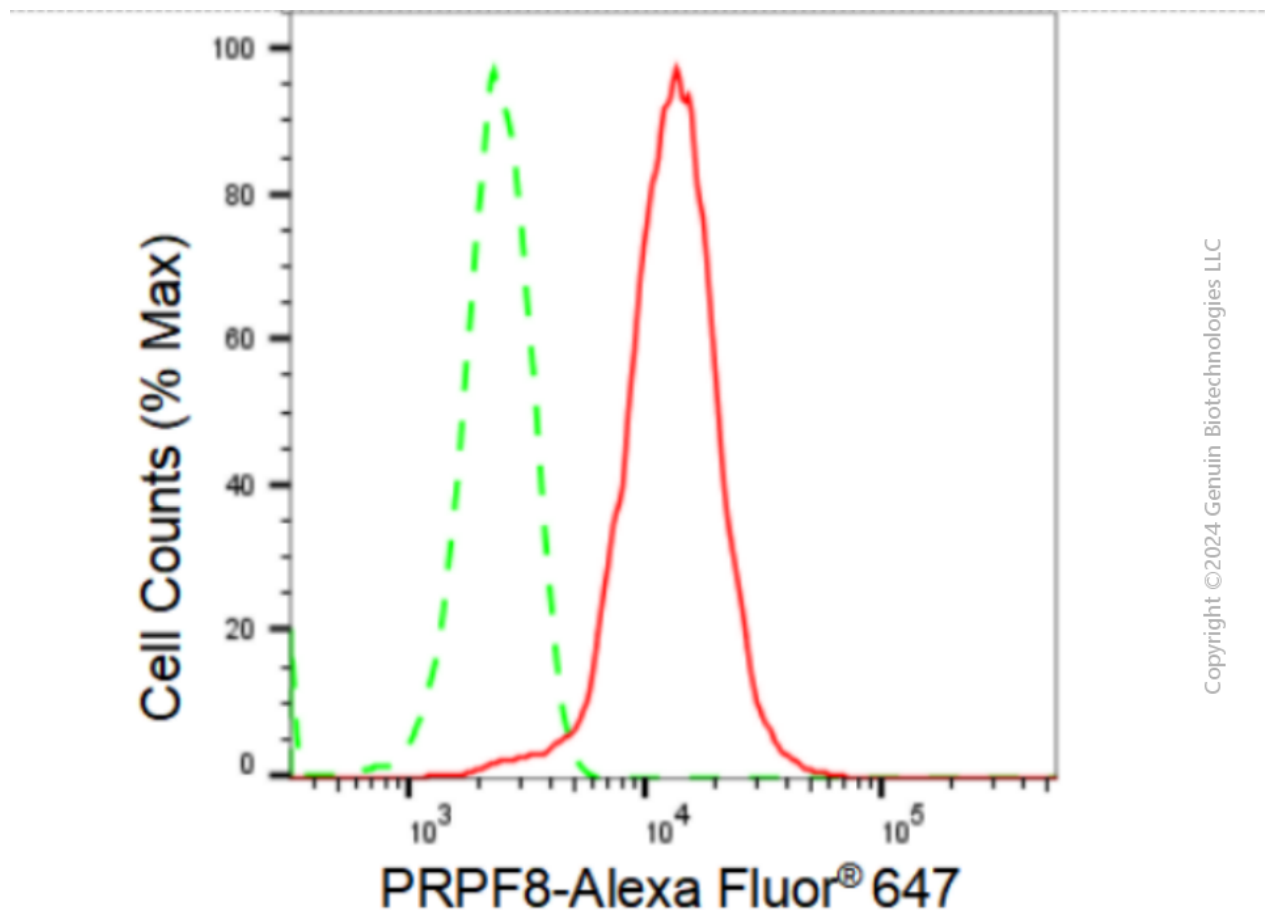
ORDERS

SALES@GENUINBIOTECH.COM
FAX: +1-540-855-7041

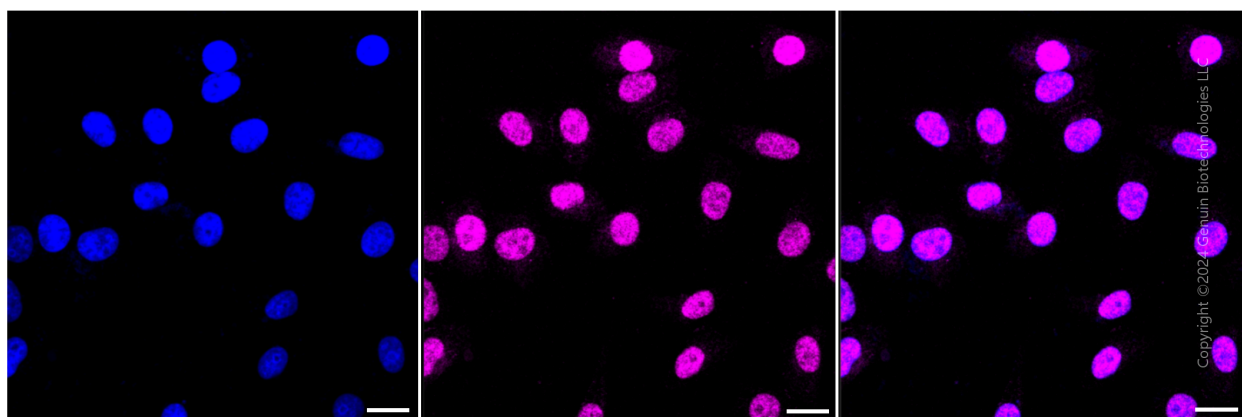
WWW.GENUINBIOTECH.COM

Note: This product is for research use only.

Validation Data



Flow cytometric analysis of PRPF8 expression in HepG2 cells using PRPF8 antibody (Cat#1134, 1:2,000). Green, isotype control; red, PRPF8.



Immunocytochemical staining of HepG2 cells with PRPF8 antibody (Cat#1134, 1:1,000). Nuclei were stained blue with DAPI; PRPF8 was stained magenta with Alexa Fluor® 647. Images were

SUPPORT

SUPPORT@GENUINBIOTECH.COM
TEL: +1-540-855-7041

ORDERS

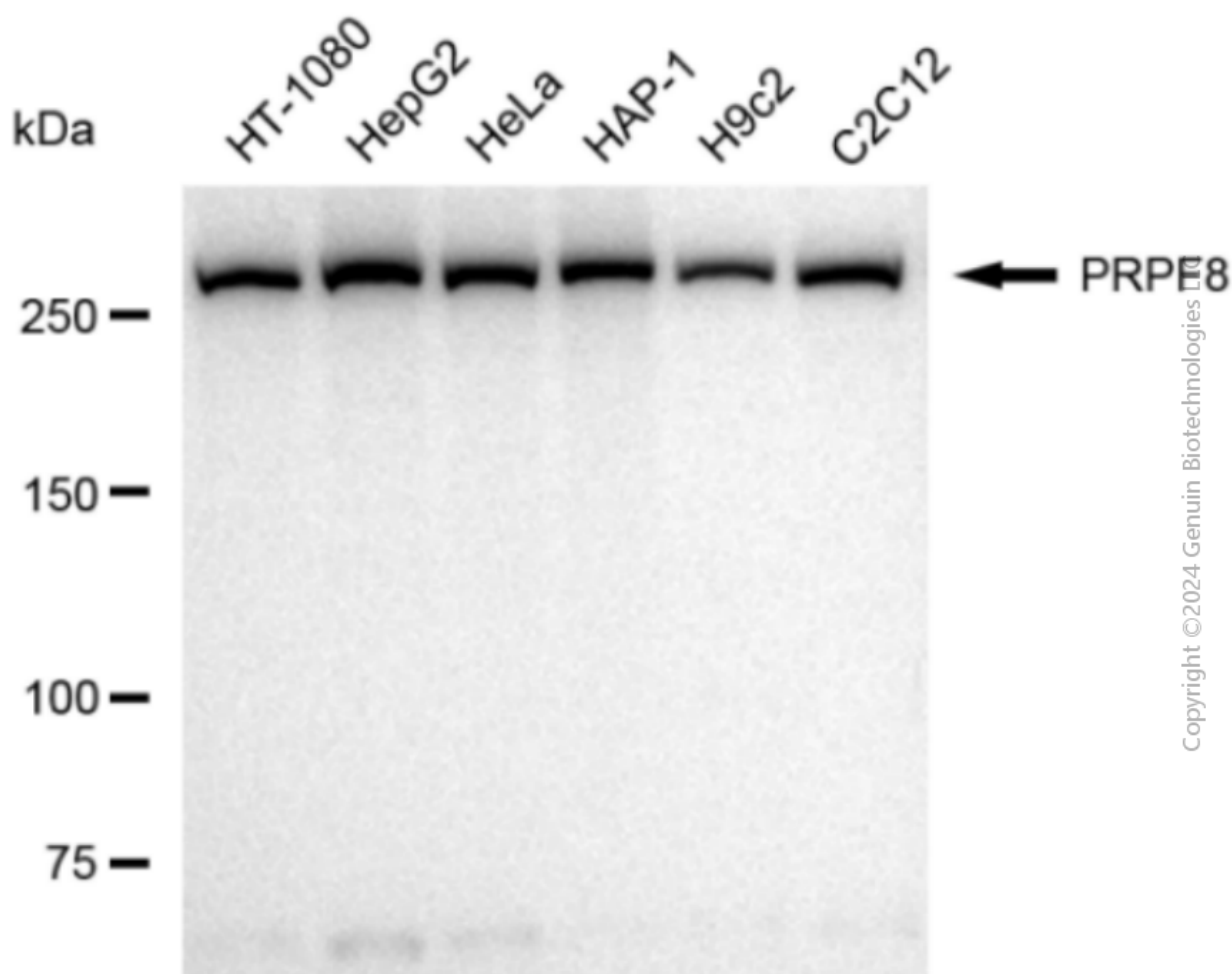
SALES@GENUINBIOTECH.COM
FAX: +1-540-855-7041

WWW.GENUINBIOTECH.COM

Anti-PRPF8 Recombinant Rabbit Monoclonal Antibody

PAGE 3

taken using Leica stellaris 5. Protein abundance based on laser Intensity and smart gain: Medium.
Scale bar: 20 μ m.



Western blotting analysis using anti-PRPF8 antibody (Cat#1134). Total cell lysates (30 μ g) from various cell lines were loaded and separated by SDS-PAGE. The blot was incubated with anti-PRPF8 antibody (Cat#1134, 1:5,000) and HRP-conjugated goat anti-rabbit secondary antibody (Cat#201, 1:20,000) respectively. Image was developed using FeQ™ ECL Substrate Kit (Cat#226). PRPF8, pre-mRNA processing factor 8.

SUPPORT

SUPPORT@GENUINBIOTECH.COM
TEL: +1-540-855-7041

ORDERS

SALES@GENUINBIOTECH.COM
FAX: +1-540-855-7041

WWW.GENUINBIOTECH.COM