

Anti-CXCR7 Recombinant Rabbit Monoclonal Antibody



Catalog #: 1143

Aliases

Atypical Chemokine Receptor 3; GPR159; RDC1; Chemokine Orphan Receptor 1; CMKOR1; CXCR7; G-Protein Coupled Receptor RDC1 Homolog; Chemokine (C-X-C Motif) Receptor 7; C-X-C Chemokine Receptor Type 7; G-Protein Coupled Receptor 159; CXC-R7; CXCR-7; RDC-1; G Protein-Coupled Receptor

Background

Gene Name: ACKR3

NCBI Gene Entry: [57007](#)

UniProt Entry: [P25106](#)

Application Information

Molecular Weight: Predicted, 41 kDa; observed, 41 kDa

Clonality: Rabbit monoclonal antibody

Clone ID: 23GB595

Species Reactivity: Human, mouse, rat

Applications Tested: Western blotting (WB), flow cytometry (FCM), immunocytochemistry (IC)

Immunogen

A synthesized peptide derived from human CXCR7

Isotype

Rabbit IgG

Storage Buffer

Supplied in PBS (pH 7.4) containing 50% glycerol, and 0.02% sodium azide.

Storage

Store at -20 °C for one year.

Recommended Dilutions

Western Blotting (WB): 1:1,000-1:5,000

Flow Cytometry (FCM): 1:2,000

Immunocytochemistry (IC): 1:100-1:1,000

SUPPORT

SUPPORT@GENUINBIOTECH.COM
TEL: +1-540-855-7041

ORDERS

SALES@GENUINBIOTECH.COM
FAX: +1-540-855-7041

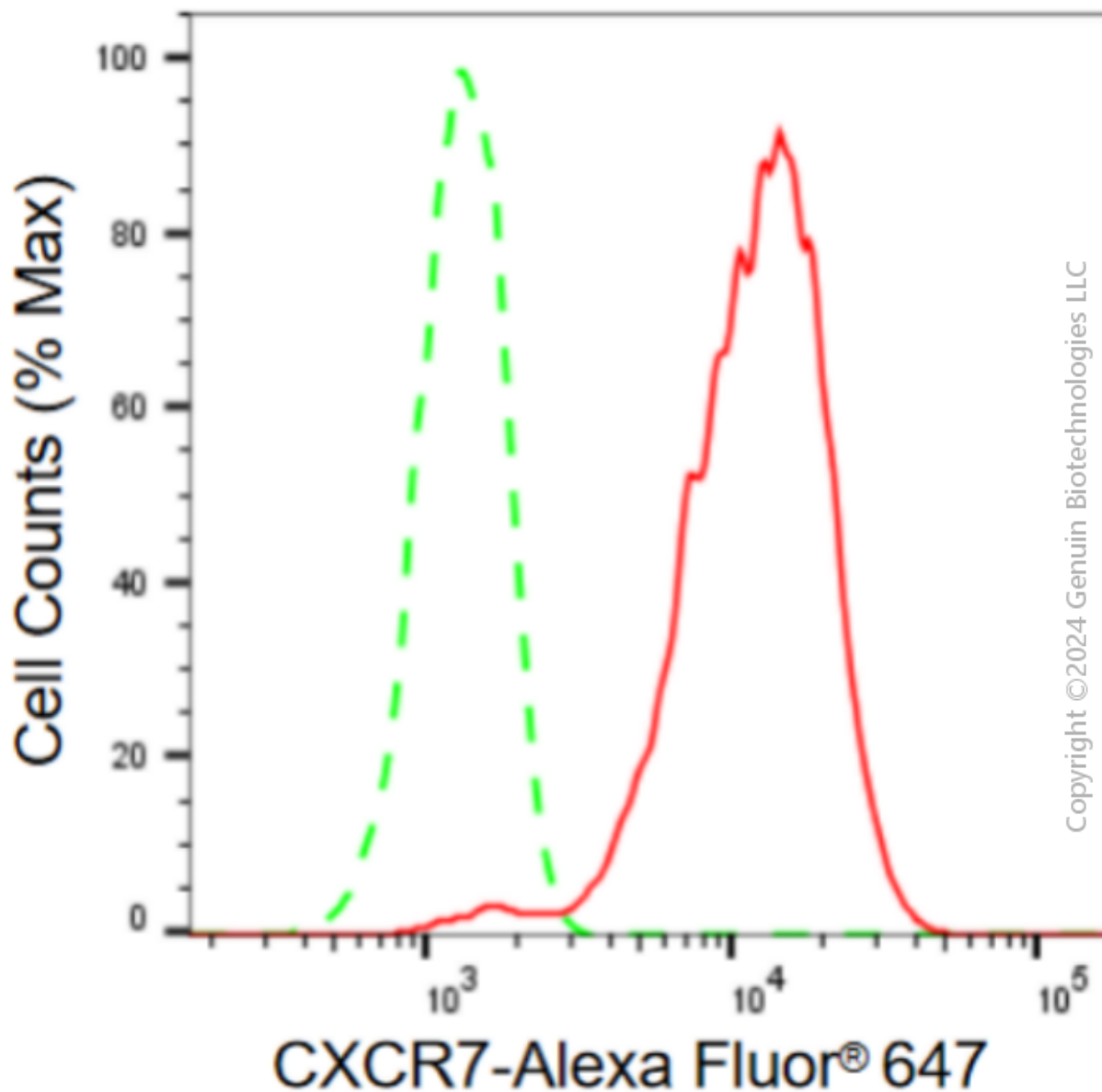
WWW.GENUINBIOTECH.COM

Anti-CXCR7 Recombinant Rabbit Monoclonal Antibody

PAGE 2

Note: This product is for research use only.

Validation Data



Flow cytometric analysis of CXCR7 expression in HepG2 cells using CXCR7 antibody (Cat#1143, 1:2,000). Green, isotype control; red, RDC1.

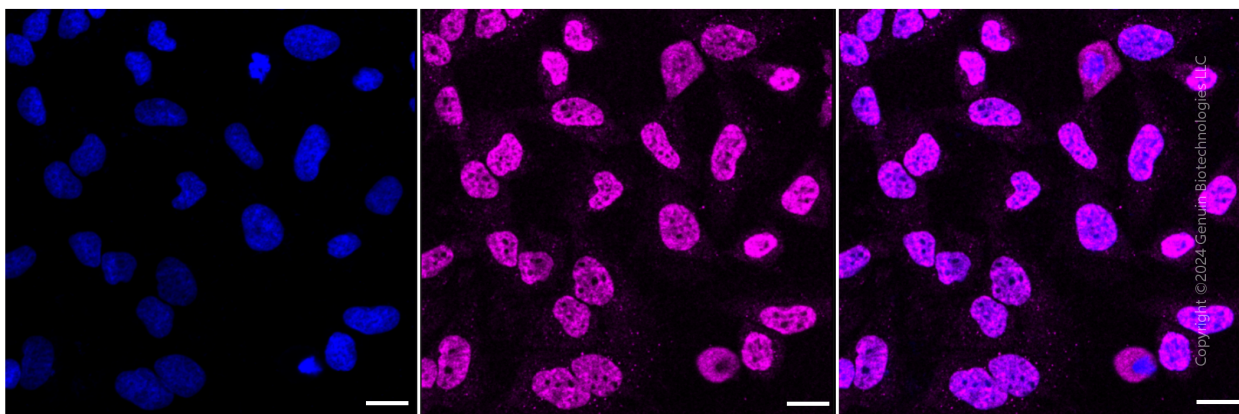
SUPPORT

SUPPORT@GENUINBIOTECH.COM
TEL: +1-540-855-7041

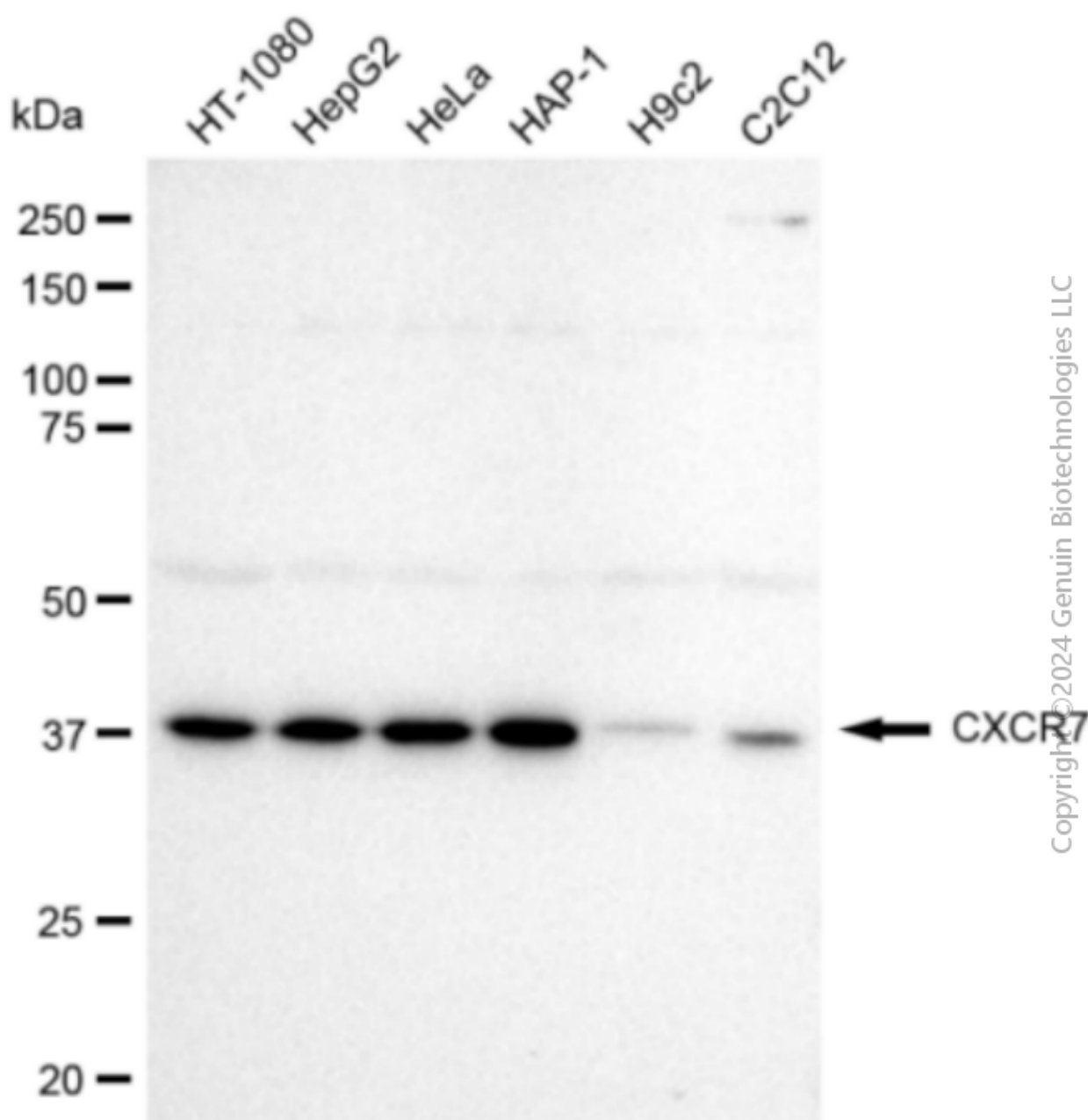
ORDERS

SALES@GENUINBIOTECH.COM
FAX: +1-540-855-7041

WWW.GENUINBIOTECH.COM



Immunocytochemical staining of HeLa cells with CXCR7 antibody (Cat#1143, 1:1,000). Nuclei were stained blue with DAPI; CXCR7 was stained magenta with Alexa Fluor® 647. Images were taken using Leica stellaris 5. Protein abundance based on laser Intensity and smart gain: Medium. Scale bar: 20 μ m.



Western blotting analysis using anti-CXCR7 antibody (Cat#1143). Total cell lysates (30 µg) from various cell lines were loaded and separated by SDS-PAGE. The blot was incubated with anti-CXCR7 antibody (Cat#1143, 1:5,000) and HRP-conjugated goat anti-rabbit secondary antibody (Cat#201, 1:50,000) respectively. Image was developed using FeQ™ ECL Substrate Kit (Cat#226).