

Catalog #: 1145

Aliases

Diablo; IAP-Binding Mitochondrial Protein; DFNA64; Second Mitochondria-Derived Activator Of Caspase; Diablo Homolog; Mitochondrial; SMAC; Smac; Direct IAP-Binding Protein With Low PI

Background

Gene Name: DIABLO

NCBI Gene Entry: [56616](#)

UniProt Entry: [Q9NR28](#)

Application Information

Molecular Weight: Predicted, 27 kDa; observed, 21 kDa

Clonality: Rabbit monoclonal antibody

Clone ID: 23GB1085

Species Reactivity: Human, mouse, rat

Applications Tested: Western blotting (WB), flow cytometry (FCM), immunocytochemistry (IC)

Immunogen

A synthesized peptide derived from human Smac/Diablo

Isotype

Rabbit IgG

Storage Buffer

Supplied in PBS (pH 7.4) containing 50% glycerol, and 0.02% sodium azide.

Storage

Store at -20 °C for one year.

Recommended Dilutions

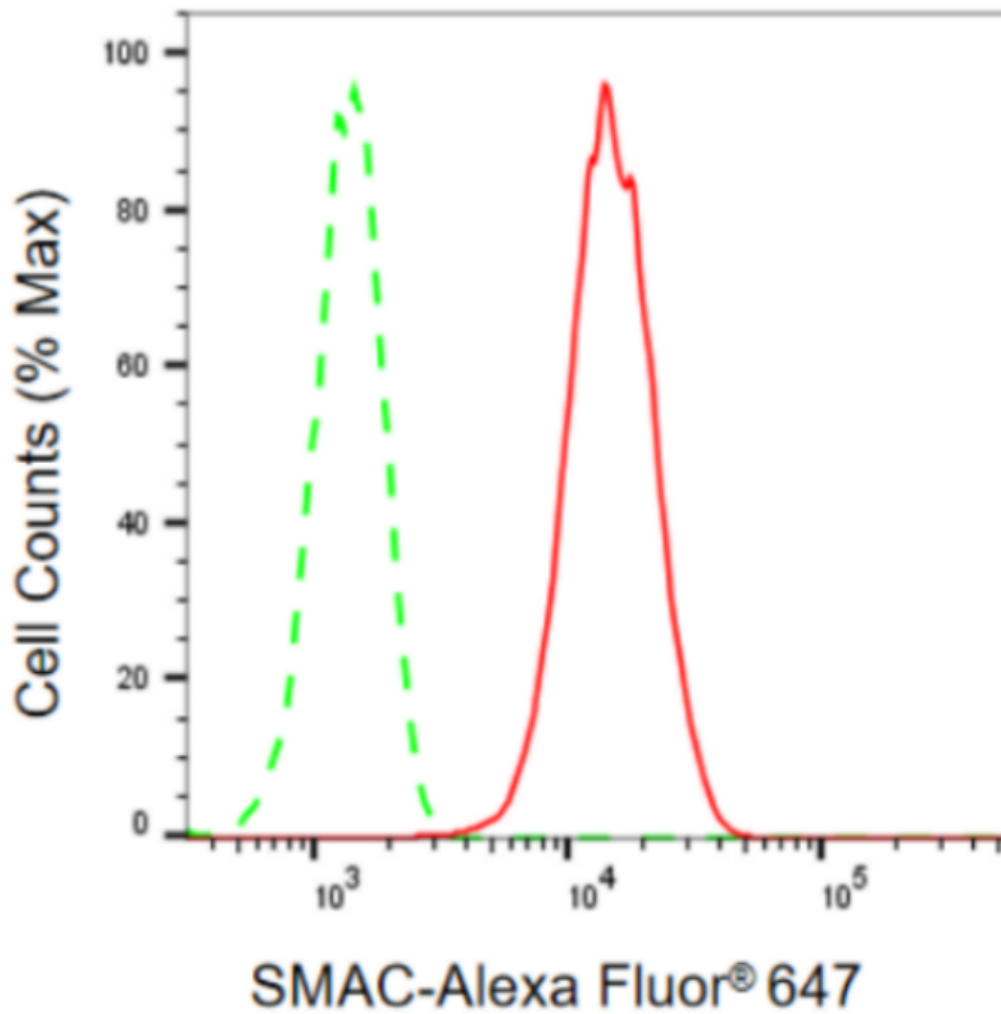
Western Blotting (WB): 1:1,000-1:5,000

Flow Cytometry (FCM): 1:2,000

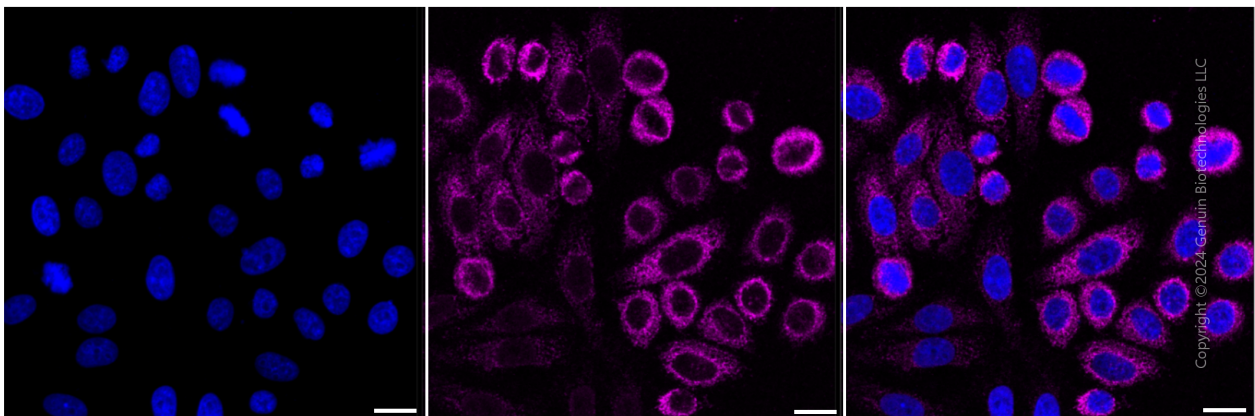
Immunocytochemistry (IC): 1:100-1:1,000

Note: This product is for research use only.

Validation Data



Flow cytometric analysis of SMAC expression in HepG2 cells using SMAC antibody (Cat#1145, 1:2,000). Green, isotype control; red, SMAC.



Immunocytochemical staining of HepG2 cells with SMAC antibody (Cat#1145, 1:1,000). Nuclei

SUPPORT

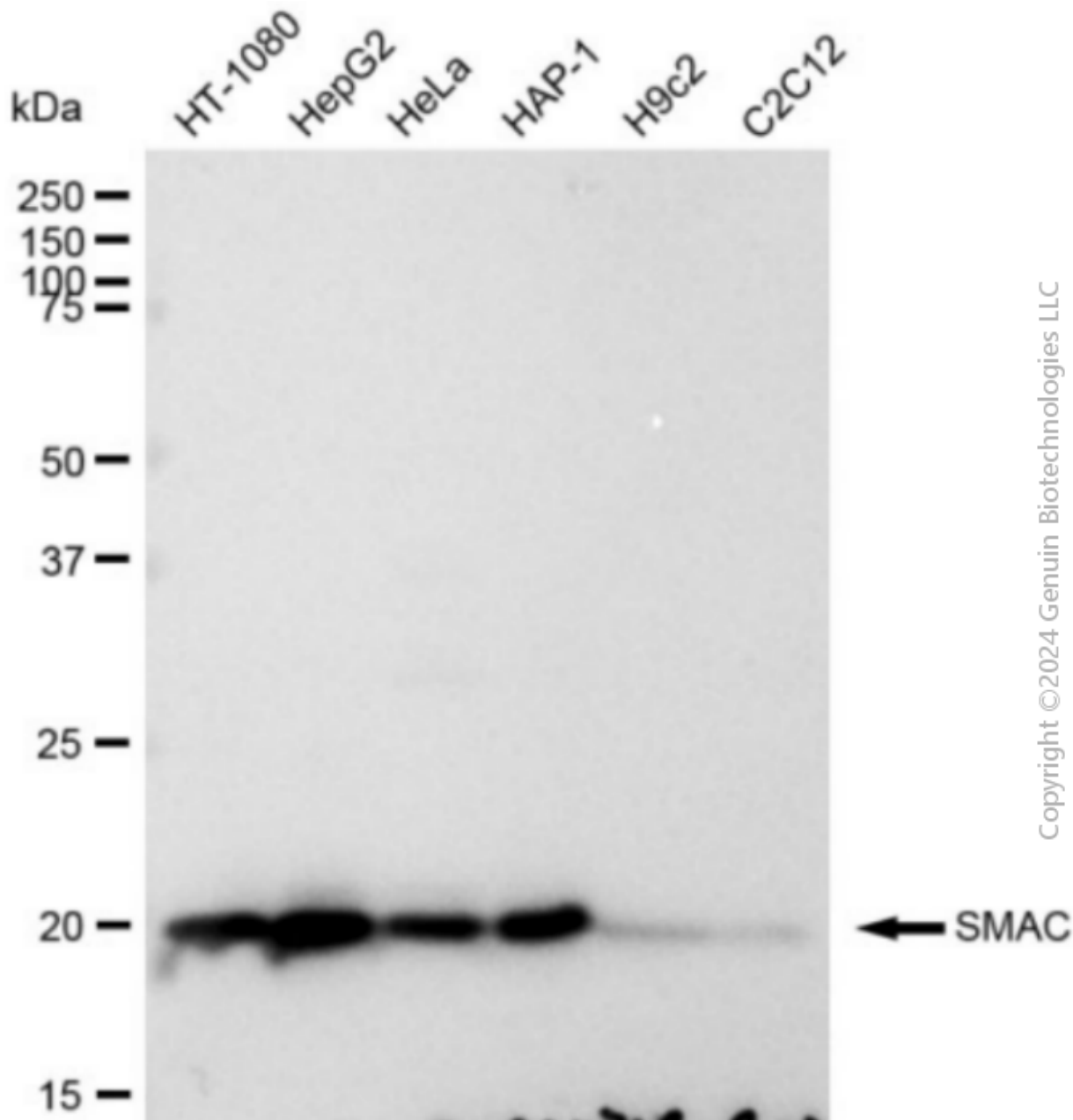
SUPPORT@GENUINBIOTECH.COM
TEL: +1-540-855-7041

ORDERS

SALES@GENUINBIOTECH.COM
FAX: +1-540-855-7041

WWW.GENUINBIOTECH.COM

were stained blue with DAPI; SMAC was stained magenta with Alexa Fluor® 647. Images were taken using Leica stellaris 5. Protein abundance based on laser Intensity and smart gain: High. Scale bar: 20 µm.



Western blotting analysis using anti-SMAC antibody (Cat#1145). Total cell lysates (30 µg) from various cell lines were loaded and separated by SDS-PAGE. The blot was incubated with anti-SMAC antibody (Cat#1145, 1:5,000) and HRP-conjugated goat anti-rabbit secondary antibody (Cat#201, 1:20,000) respectively. Image was developed using FeQ™ ECL Substrate Kit (Cat#226).