

Anti-MAP3K5 Recombinant Rabbit Monoclonal Antibody



Catalog #: 1160

Aliases

MAP3K5; Mitogen-Activated Protein Kinase Kinase Kinase 5; MAPKKK5; ASK1; MEKK5; Apoptosis Signal-Regulating Kinase 1; MAPK/ERK Kinase Kinase 5; MEK Kinase 5; EC 2.7.11.25; MEKK 5; ASK-1; Apoptosis Signal Regulating Kinase 1; MAP/ERK Kinase Kinase 5; EC 2.7.11

Background

Gene Name: MAP3K5

NCBI Gene Entry: [4217](#)

UniProt Entry: [Q99683](#)

Application Information

Molecular Weight: Predicted, 155 kDa; observed, 155 kDa

Clonality: Rabbit monoclonal antibody

Clone ID: 23GB2060

Species Reactivity: Human

Applications Tested: Western blotting (WB), flow cytometry (FCM), immunocytochemistry (IC)

Immunogen

A synthesized peptide derived from human ASK1

Isotype

Rabbit IgG

Storage Buffer

Supplied in PBS (pH 7.4) containing 50% glycerol, and 0.02% sodium azide.

Storage

Store at -20 °C for one year.

Recommended Dilutions

Western Blotting (WB): 1:1,000-1:5,000

Flow Cytometry (FCM): 1:2,000

Immunocytochemistry (IC): 1:100-1:1,000

SUPPORT

SUPPORT@GENUINBIOTECH.COM
TEL: +1-540-855-7041

ORDERS

SALES@GENUINBIOTECH.COM
FAX: +1-540-855-7041

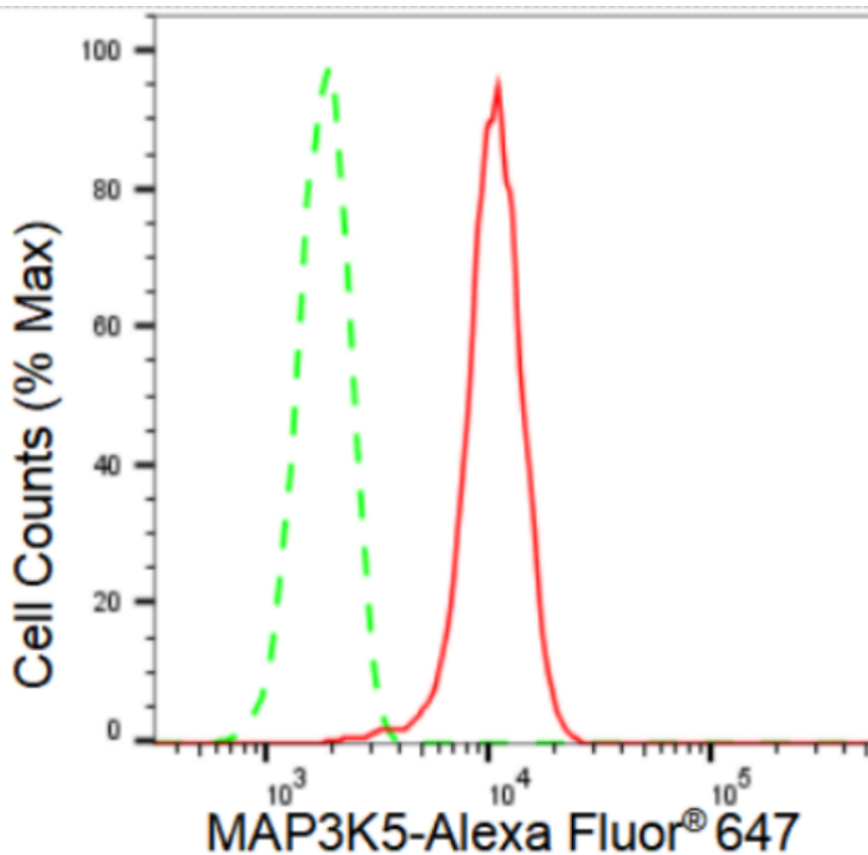
WWW.GENUINBIOTECH.COM

Anti-MAP3K5 Recombinant Rabbit Monoclonal Antibody

PAGE 2

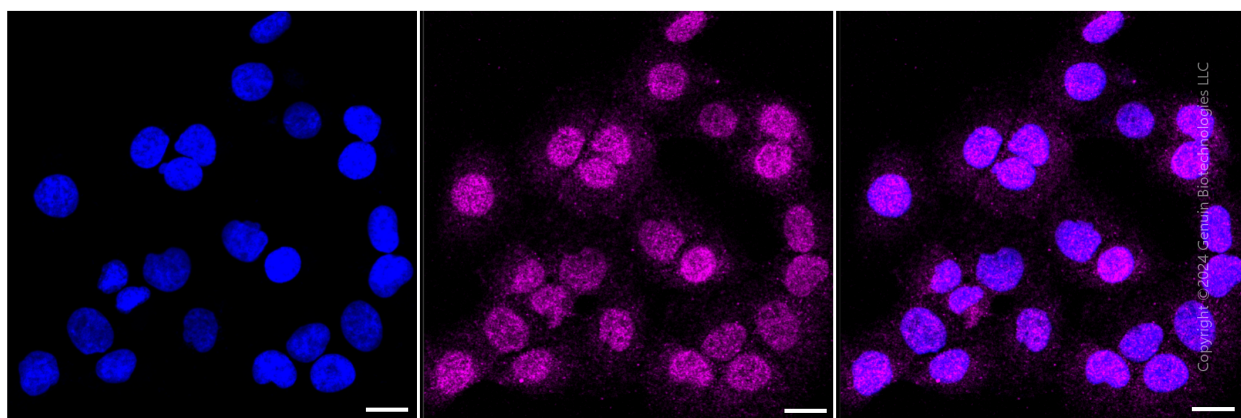
Note: This product is for research use only.

Validation Data



Copyright ©2024 Genuin Biotechnologies LLC

Flow cytometric analysis of MAP3K5 expression in HT-1080 cells using MAP3K5 antibody (Cat#1160, 1:2,000). Green, isotype control; red, MAP3K5.



Copyright ©2024 Genuin Biotechnologies LLC

Immunocytochemical staining of HT-1080 cells with MAP3K5 antibody (Cat#1160, 1:1,000). Nuclei were stained blue with DAPI; MAP3K5 was stained magenta with Alexa Fluor® 647. Images were taken using Leica stellaris 5. Protein abundance based on laser Intensity and smart gain: Medium. Scale bar: 20 µm.

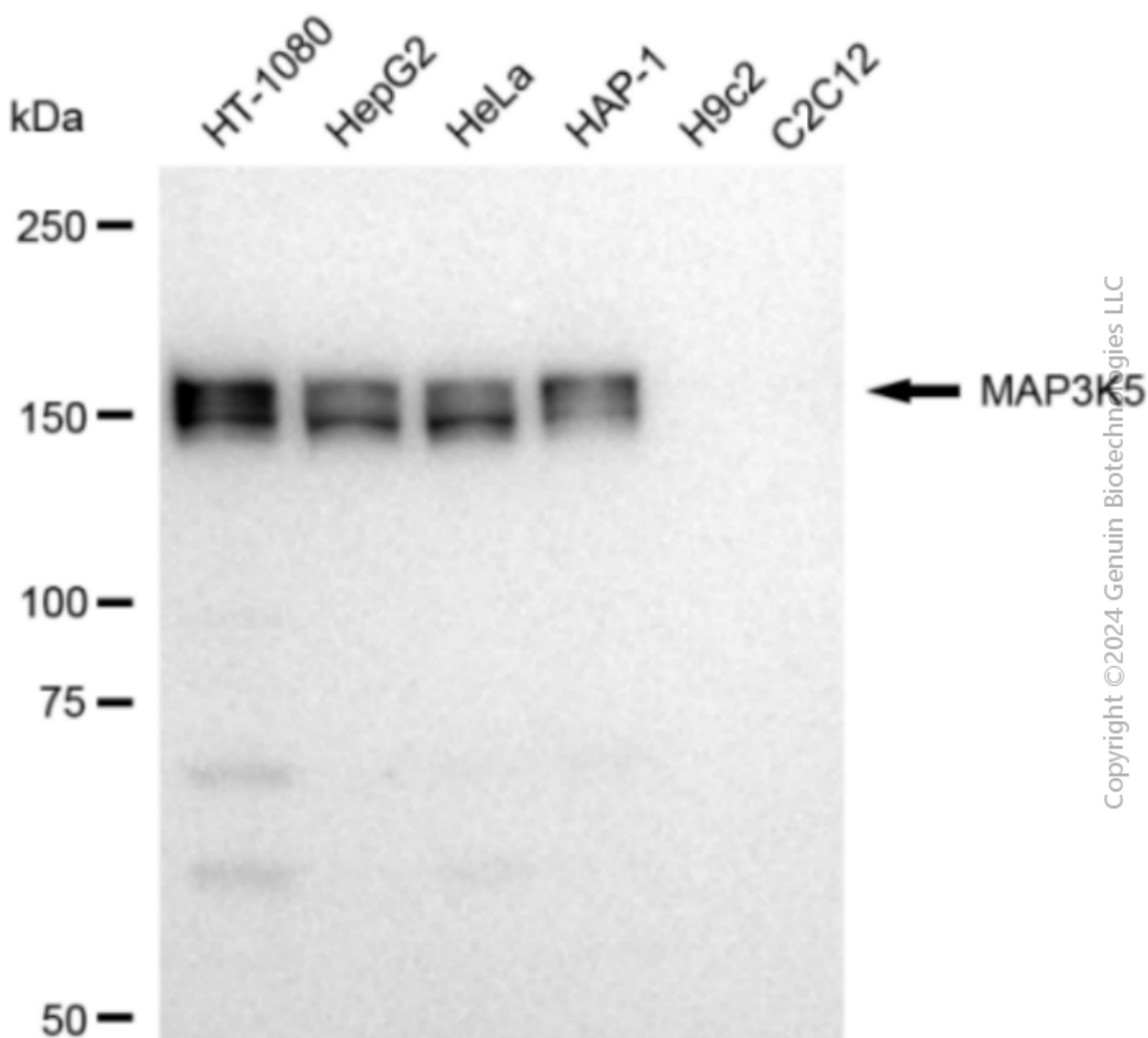
SUPPORT

SUPPORT@GENUINBIOTECH.COM
TEL: +1-540-855-7041

ORDERS

SALES@GENUINBIOTECH.COM
FAX: +1-540-855-7041

WWW.GENUINBIOTECH.COM



Copyright ©2024 Genuin Biotechnologies LLC

Western blotting analysis using anti-MAP3K5 antibody (Cat#1160). Total cell lysates (30 µg) from various cell lines were loaded and separated by SDS-PAGE. The blot was incubated with anti-MAP3K5 antibody (Cat#1160, 1:5,000) and HRP-conjugated goat anti-rabbit secondary antibody (Cat#201, 1:20,000) respectively. Image was developed using FeQ™ ECL Substrate Kit (Cat#226). MAP3K5, mitogen-activated protein kinase kinase kinase 5.