

# Anti-Indolethylamine N-methyltransferase Recombinant Rabbit Monoclonal Antibody



**Catalog #: 1196**

## Aliases

INMT; Indolethylamine N-Methyltransferase; Aromatic Alkylamine N-Methyltransferase; Indolamine N-Methyltransferase; Arylamine N-Methyltransferase ; Thioether S-Methyltransferase; Amine N-Methyltransferase; EC 2.1.1.49; TEMT; Nicotine N-Methyltransferase; EC 2.1.1.96; EC 2.1.1

## Background

Gene Name: INMT

NCBI Gene Entry: [11185](#)

UniProt Entry: [O95050](#)

## Application Information

Molecular Weight: Predicted, 29 kDa; observed, 25 kDa

Clonality: Rabbit monoclonal antibody

Clone ID: 23GB2160

Species Reactivity: Human, mouse, rat

Applications Tested: Western blotting (WB), flow cytometry (FCM), immunocytochemistry (IC)

## Immunogen

A synthesized peptide derived from human TEMT

## Isotype

Rabbit IgG

## Storage Buffer

Supplied in PBS (pH 7.4) containing 50% glycerol, and 0.02% sodium azide.

## Storage

Store at -20 °C for one year.

## Recommended Dilutions

Western Blotting (WB): 1:1,000-1:5,000

Flow Cytometry (FCM): 1:2,000

Immunocytochemistry (IC): 1:100-1:1,000

---

### SUPPORT

SUPPORT@GENUINBIOTECH.COM  
TEL: +1-540-855-7041

### ORDERS

SALES@GENUINBIOTECH.COM  
FAX: +1-540-855-7041

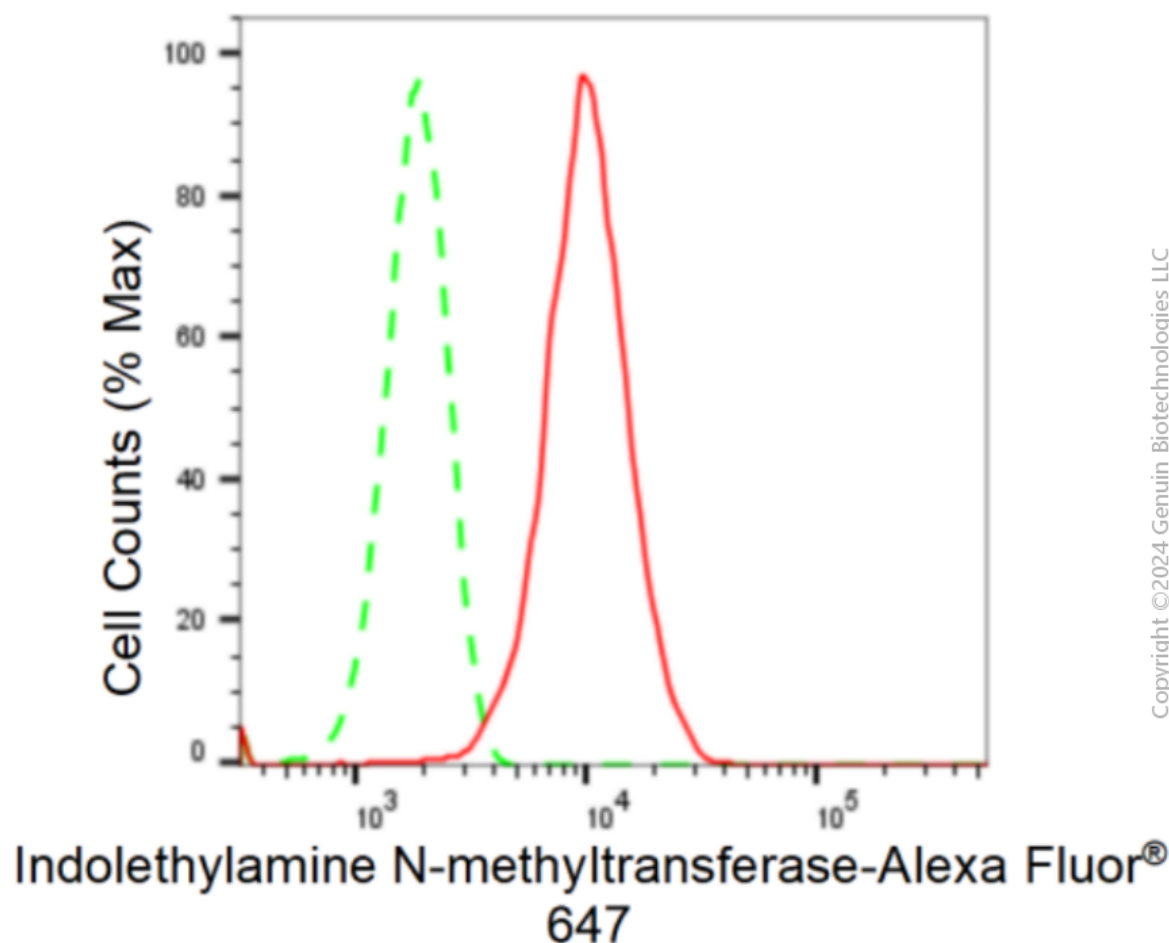
[WWW.GENUINBIOTECH.COM](http://WWW.GENUINBIOTECH.COM)

# Anti-Indolethylamine N-methyltransferase Recombinant Rabbit Monoclonal Antibody

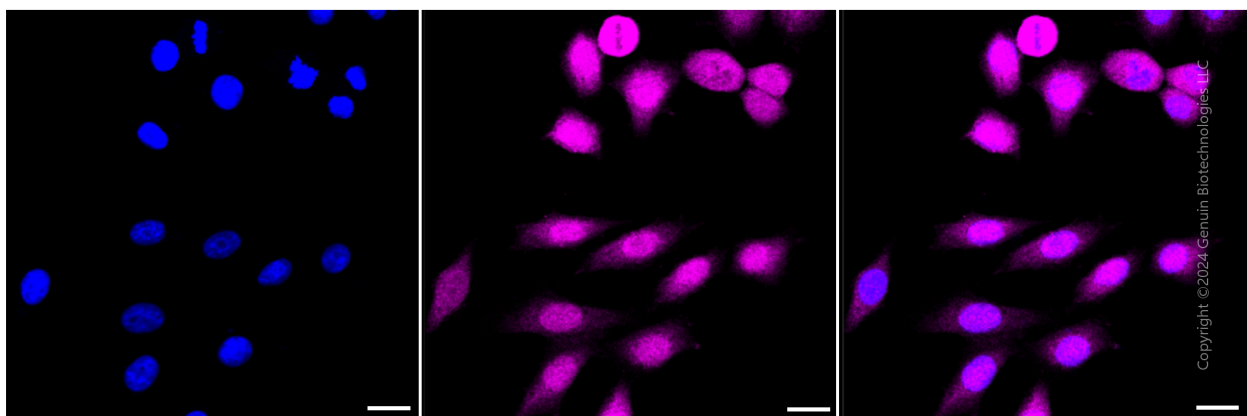
PAGE 2

**Note:** This product is for research use only.

## Validation Data



Flow cytometric analysis of Indolethylamine N-methyltransferase expression in HepG2 cells using Indolethylamine N-methyltransferase antibody (Cat#1196, 1:2,000). Green, isotype control; red, Indolethylamine N-methyltransferase.



Immunocytochemical staining of HepG2 cells with Indolethylamine N-methyltransferase antibody

### SUPPORT

SUPPORT@GENUINBIOTECH.COM  
TEL: +1-540-855-7041

### ORDERS

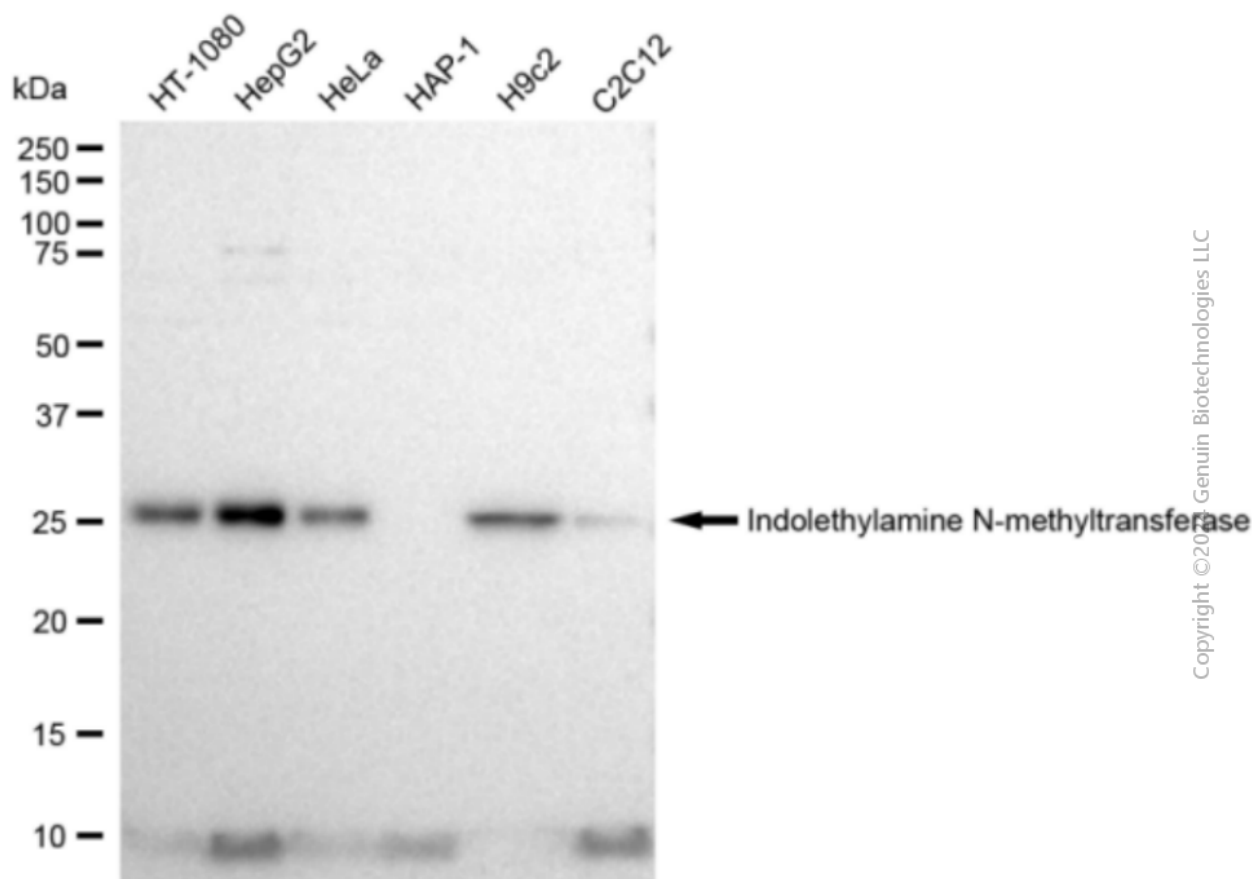
SALES@GENUINBIOTECH.COM  
FAX: +1-540-855-7041

WWW.GENUINBIOTECH.COM

## Anti-Indolethylamine N-methyltransferase Recombinant Rabbit Monoclonal Antibody

PAGE 3

(Cat#1196, 1:1,000). Nuclei were stained blue with DAPI; Indolethylamine N-methyltransferase was stained magenta with Alexa Fluor® 647. Images were taken using Leica stellaris 5. Protein abundance based on laser Intensity and smart gain: Medium. Scale bar: 20  $\mu$ m.



Western blotting analysis using anti-Indolethylamine N-methyltransferase antibody (Cat#1196). Total cell lysates (30  $\mu$ g) from various cell lines were loaded and separated by SDS-PAGE. The blot was incubated with anti-Indolethylamine N-methyltransferase antibody (Cat#1196, 1:5,000) and HRP-conjugated goat anti-rabbit secondary antibody (Cat#201, 1:20,000) respectively. Image was developed using FeQ™ ECL Substrate Kit (Cat#226).

### SUPPORT

SUPPORT@GENUINBIOTECH.COM  
TEL: +1-540-855-7041

### ORDERS

SALES@GENUINBIOTECH.COM  
FAX: +1-540-855-7041

WWW.GENUINBIOTECH.COM