

Catalog #: 1198

Aliases

PSMB10; Proteasome 20S Subunit Beta 10; LMP10; MECL1; Proteasome (Prosome, Macropain) Subunit, Beta Type, 10; Multicatalytic Endopeptidase Complex Subunit MECL1; Proteasome Subunit Beta Type-10; Low Molecular Mass Protein 10; Proteasome Subunit Beta 10; Proteasome Subunit Beta-2i; Macropain Subunit MECL1; Proteasome MECL1; EC 3.4.25.1; MGC1665; Beta2i; Proteasome Catalytic Subunit 2i; Proteasome Subunit Beta 7i; Proteasome Subunit Beta2i; Proteasome Subunit MECL1; Proteasome Subunit B2i; PRAAS5; BETA2I

Background

Gene Name: PSMB10

NCBI Gene Entry: [5699](#)

UniProt Entry: [P40306](#)

Application Information

Molecular Weight: Predicted, 29 kDa; observed, 25 kDa

Clonality: Rabbit monoclonal antibody

Clone ID: 23GB2170

Species Reactivity: Human, mouse

Applications Tested: Western blotting (WB), flow cytometry (FCM), immunocytochemistry (IC)

Immunogen

A synthesized peptide derived from human PSMB10

Isotype

Rabbit IgG

Storage Buffer

Supplied in PBS (pH 7.4) containing 50% glycerol, and 0.02% sodium azide.

Storage

Store at -20 °C for one year.

Recommended Dilutions

Western Blotting (WB): 1:1,000-1:5,000

Flow Cytometry (FCM): 1:2,000

Immunocytochemistry (IC): 1:100-1:1,000

SUPPORT

SUPPORT@GENUINBIOTECH.COM
TEL: +1-540-855-7041

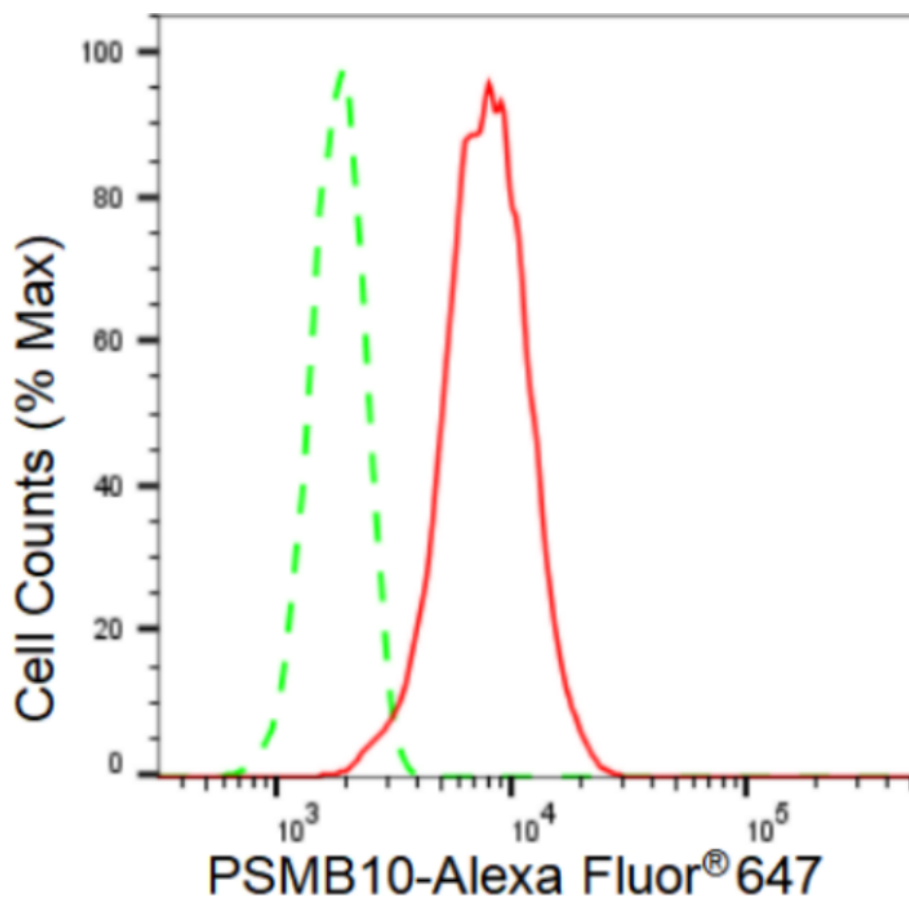
ORDERS

SALES@GENUINBIOTECH.COM
FAX: +1-540-855-7041

WWW.GENUINBIOTECH.COM

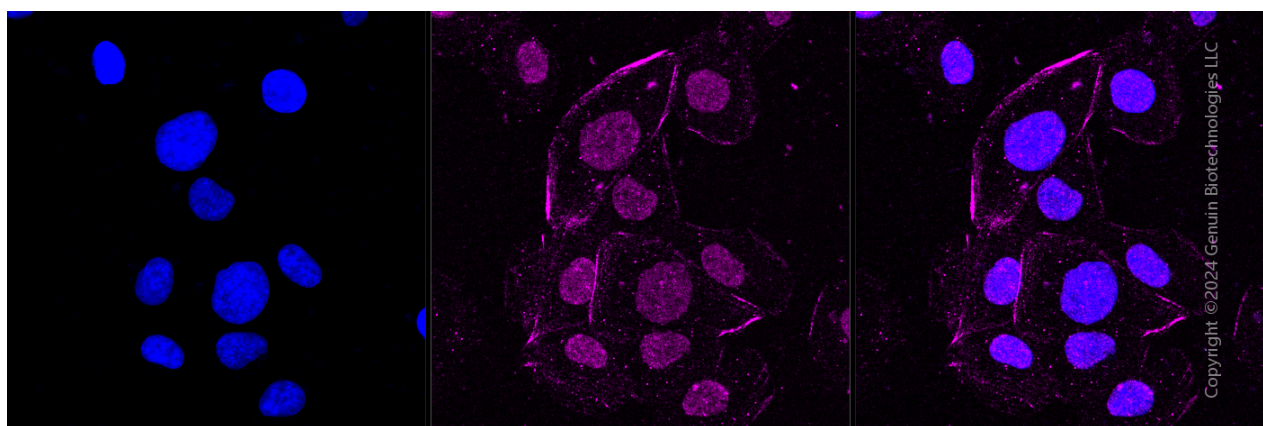
Note: This product is for research use only.

Validation Data



Copyright ©2024 Genuin Biotechnologies LLC

Flow cytometric analysis of PSMB10 expression in HT-1080 cells using PSMB10 antibody (Cat#1198, 1:2,000). Green, isotype control; red, PSMB10.



Copyright ©2024 Genuin Biotechnologies LLC

Immunocytochemical staining of HT-1080 cells with PSMB10 antibody (Cat#1198, 1:1,000). Nuclei were stained blue with DAPI; PSMB10 was stained magenta with Alexa Fluor® 647.

SUPPORT

SUPPORT@GENUINBIOTECH.COM
TEL: +1-540-855-7041

ORDERS

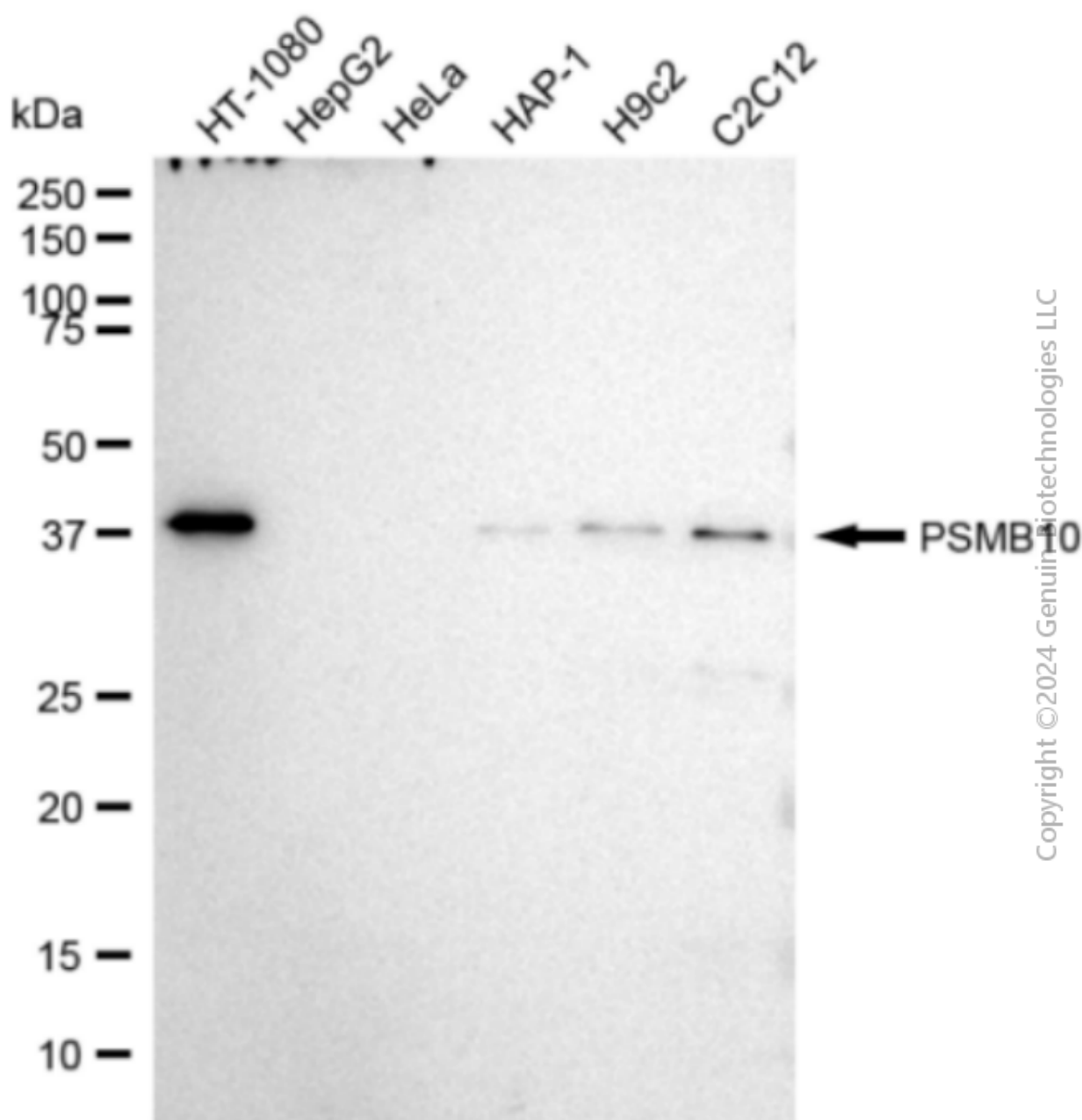
SALES@GENUINBIOTECH.COM
FAX: +1-540-855-7041

WWW.GENUINBIOTECH.COM

Anti-PSMB10 Recombinant Rabbit Monoclonal Antibody

PAGE 3

Images were taken using Leica stellaris 5. Protein abundance based on laser Intensity and smart gain: Medium. Scale bar: 20 μ m.



Western blotting analysis using anti-PSMB10 antibody (Cat#1198). Total cell lysates (30 μ g) from various cell lines were loaded and separated by SDS-PAGE. The blot was incubated with anti-PSMB10 antibody (Cat#1198, 1:5,000) and HRP-conjugated goat anti-rabbit secondary antibody (Cat#201, 1:20,000) respectively. Image was developed using FeQ™ ECL Substrate Kit (Cat#226).

SUPPORT

SUPPORT@GENUINBIOTECH.COM
TEL: +1-540-855-7041

ORDERS

SALES@GENUINBIOTECH.COM
FAX: +1-540-855-7041

WWW.GENUINBIOTECH.COM