

Anti-Cadherin 2 Recombinant Rabbit Monoclonal Antibody



Catalog #: 1206

Aliases

CDH2; Cadherin 2; CDHN; CD325; NCAD; Cadherin 2, Type 1, N-Cadherin (Neuronal); Neural Cadherin; N-Cadherin; Cadherin-2; CDw325; Calcium-Dependent Adhesion Protein, Neuronal; CD325 Antigen; N-Cadherin 1; ARVD14; ACOGS; ADHD8

Background

Gene Name: CDH2

NCBI Gene Entry: [1000](#)

UniProt Entry: [P19022](#)

Application Information

Molecular Weight: Predicted, 100 kDa; observed, 140 kDa

Clonality: Rabbit monoclonal antibody

Clone ID: 23GB2210

Species Reactivity: Human, mouse

Applications Tested: Western blotting (WB), flow cytometry (FCM), immunocytochemistry (IC), immunohistochemistry (IHC)

Immunogen

A synthesized peptide derived from human N Cadherin

Isotype

Rabbit IgG

Storage Buffer

Supplied in PBS (pH 7.4) containing 50% glycerol, and 0.02% sodium azide.

Storage

Store at -20 °C for one year.

Recommended Dilutions

Western Blotting (WB): 1:1,000-1:5,000

Flow Cytometry (FCM): 1:2,000

Immunocytochemistry (IC): 1:100-1:1,000

Immunohistochemistry (IHC): 1:100-1:200

SUPPORT

SUPPORT@GENUINBIOTECH.COM
TEL: +1-540-855-7041

ORDERS

SALES@GENUINBIOTECH.COM
FAX: +1-540-855-7041

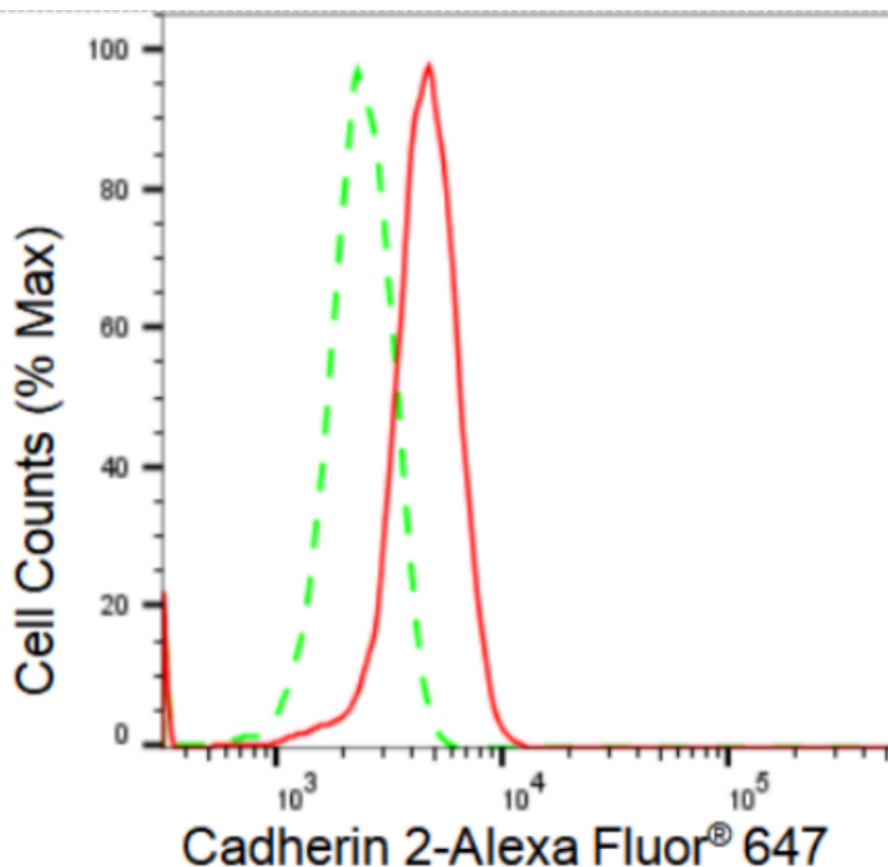
WWW.GENUINBIOTECH.COM

Anti-Cadherin 2 Recombinant Rabbit Monoclonal Antibody

PAGE 2

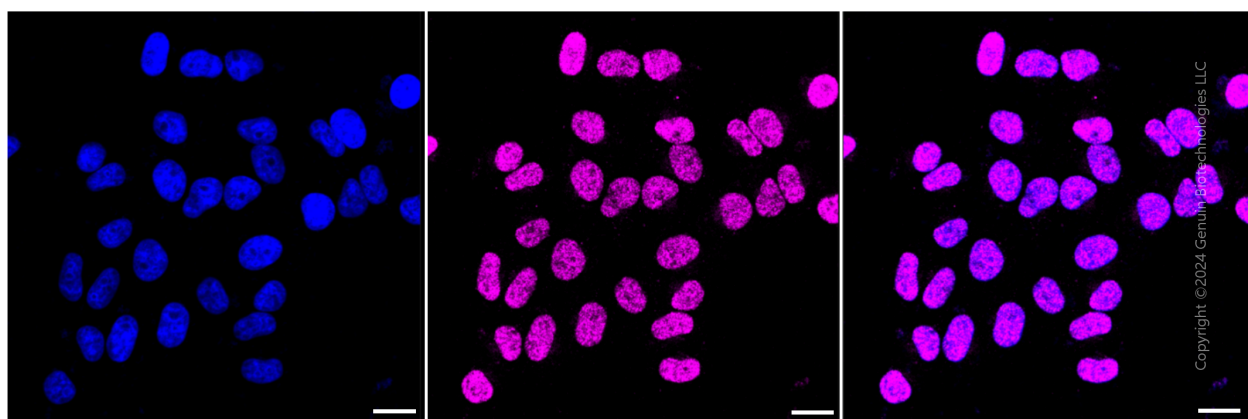
Note: This product is for research use only.

Validation Data



Copyright ©2024 Genuin Biotechnologies LLC

Flow cytometric analysis of Cadherin 2 expression in HepG2 cells using Cadherin 2 antibody (Cat#1206, 1:2,000). Green, isotype control; red, Cadherin 2.



Immunocytochemical staining of HepG2 cells with Cadherin 2 antibody (Cat#1206, 1:1,000). Nuclei were stained blue with DAPI; Cadherin 2 was stained magenta with Alexa Fluor® 647. Images were taken using Leica stellaris 5. Protein abundance based on laser Intensity and smart

SUPPORT

SUPPORT@GENUINBIOTECH.COM
TEL: +1-540-855-7041

ORDERS

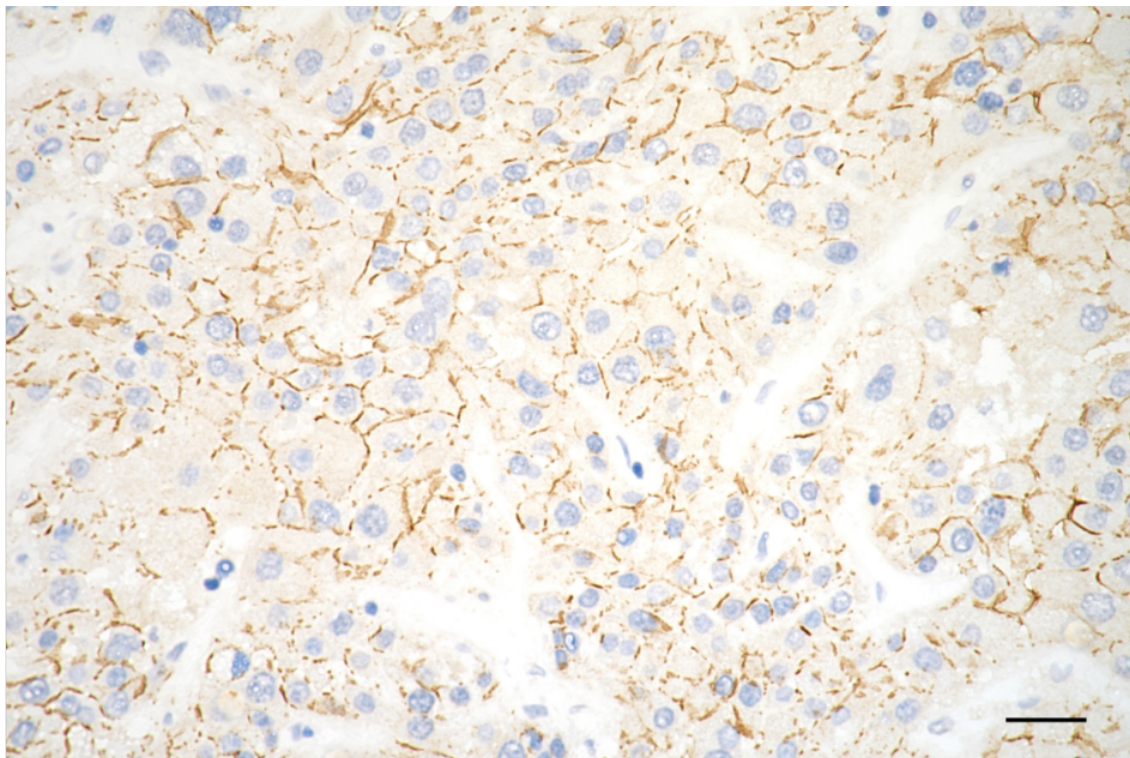
SALES@GENUINBIOTECH.COM
FAX: +1-540-855-7041

WWW.GENUINBIOTECH.COM

Anti-Cadherin 2 Recombinant Rabbit Monoclonal Antibody

PAGE 3

gain: Medium. Scale bar: 20 μ m.



Copyright ©2025 Genuin Biotechnologies LLC

Immunohistochemistry was performed on paraffin-embedded human hepatocarcinoma using anti-cadherin 2 antibody (Cat#1206, 1:200). Antigen retrieval was done in sodium citrate buffer (pH 6.0). DAB was used for detection, with hematoxylin counterstaining. Images were acquired using a Nikon Ci-L Plus microscope (40 \times objective). Scale bar: 25 μ m.

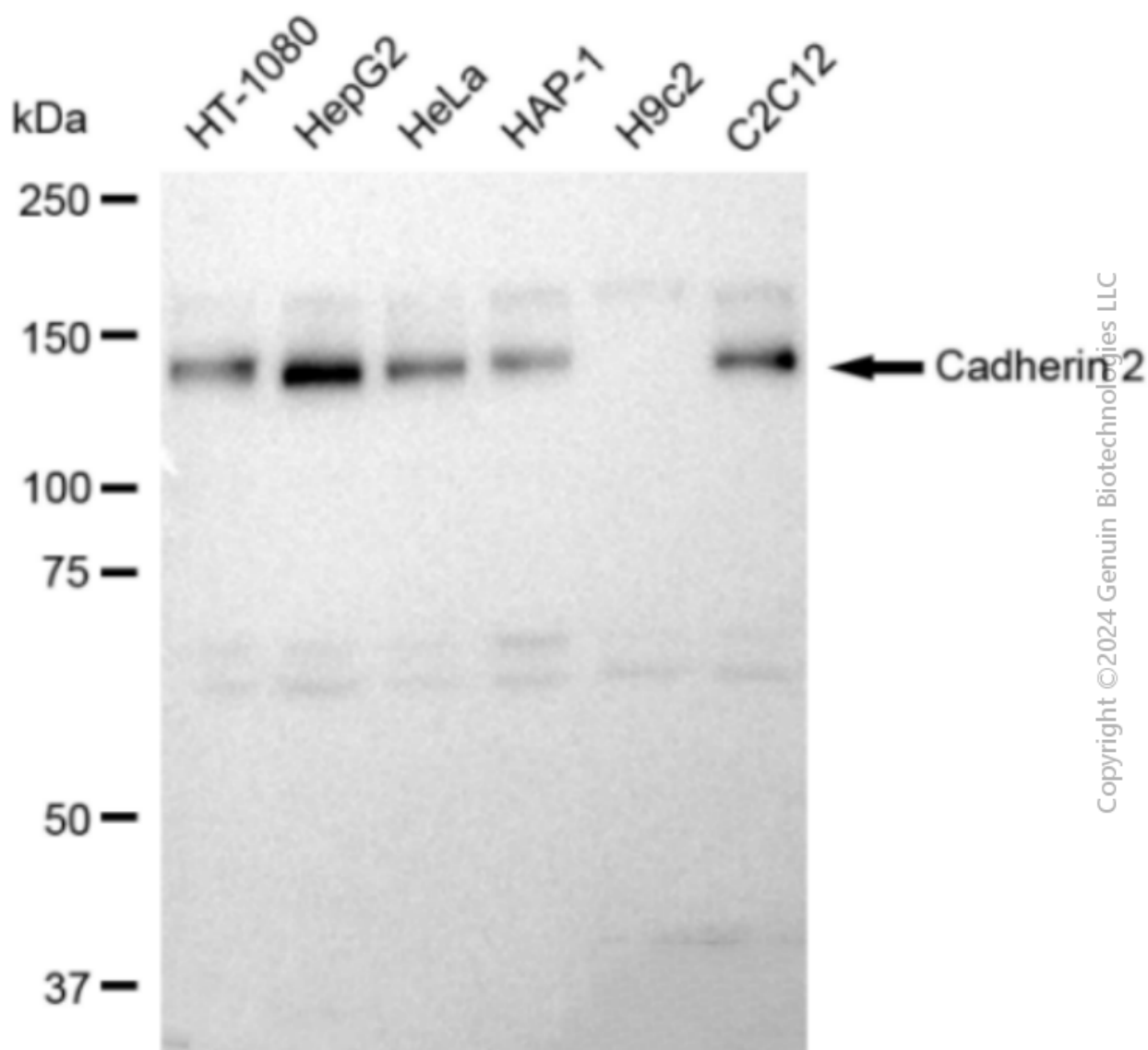
SUPPORT

SUPPORT@GENUINBIOTECH.COM
TEL: +1-540-855-7041

ORDERS

SALES@GENUINBIOTECH.COM
FAX: +1-540-855-7041

WWW.GENUINBIOTECH.COM



Western blotting analysis using anti-Cadherin 2 antibody (Cat#1206). Total cell lysates (30 µg) from various cell lines were loaded and separated by SDS-PAGE. The blot was incubated with anti-Cadherin 2 antibody (Cat#1206, 1:5,000) and HRP-conjugated goat anti-rabbit secondary antibody (Cat#201, 1:20,000) respectively. Image was developed using FeQ™ ECL Substrate Kit (Cat#226).