

Anti-DNA methyltransferase 3 alpha Recombinant Rabbit Monoclonal Antibody



Catalog #: 1211

Aliases

DNMT3A; DNA Methyltransferase 3 Alpha; DNA (Cytosine-5-)-Methyltransferase 3 Alpha; DNA (Cytosine-5)-Methyltransferase 3A; Cysteine Methyltransferase DNMT3A; DNA MTase HsaIIIA; EC 2.1.1.37; M.HsaIIIA; DNA Cytosine Methyltransferase 3A2; DNA Methyltransferase HsaIIIA; EC 2.1.1.-; DNMT3A2; HESJAS; Dnmt3a; TBR5

Background

Gene Name: DNMT3A

NCBI Gene Entry: [1788](#)

UniProt Entry: [Q9Y6K1](#)

Application Information

Molecular Weight: Predicted, 102 kDa; observed, 130 kDa

Clonality: Rabbit monoclonal antibody

Clone ID: 23GB2230

Species Reactivity: Human, mouse, rat

Applications Tested: Western blotting (WB), immunocytochemistry (IC), flow cytometry (FCM)

Immunogen

A synthesized peptide derived from human Dnmt3a

Isotype

Rabbit IgG

Storage Buffer

Supplied in PBS (pH 7.4) containing 50% glycerol, and 0.02% sodium azide.

Storage

Store at -20 °C for one year.

Recommended Dilutions

Western Blotting (WB): 1:1,000-1:5,000

Immunocytochemistry (IC): 1:100-1:1,000

Flow Cytometry (FCM): 1:2,000

SUPPORT

SUPPORT@GENUINBIOTECH.COM
TEL: +1-540-855-7041

ORDERS

SALES@GENUINBIOTECH.COM
FAX: +1-540-855-7041

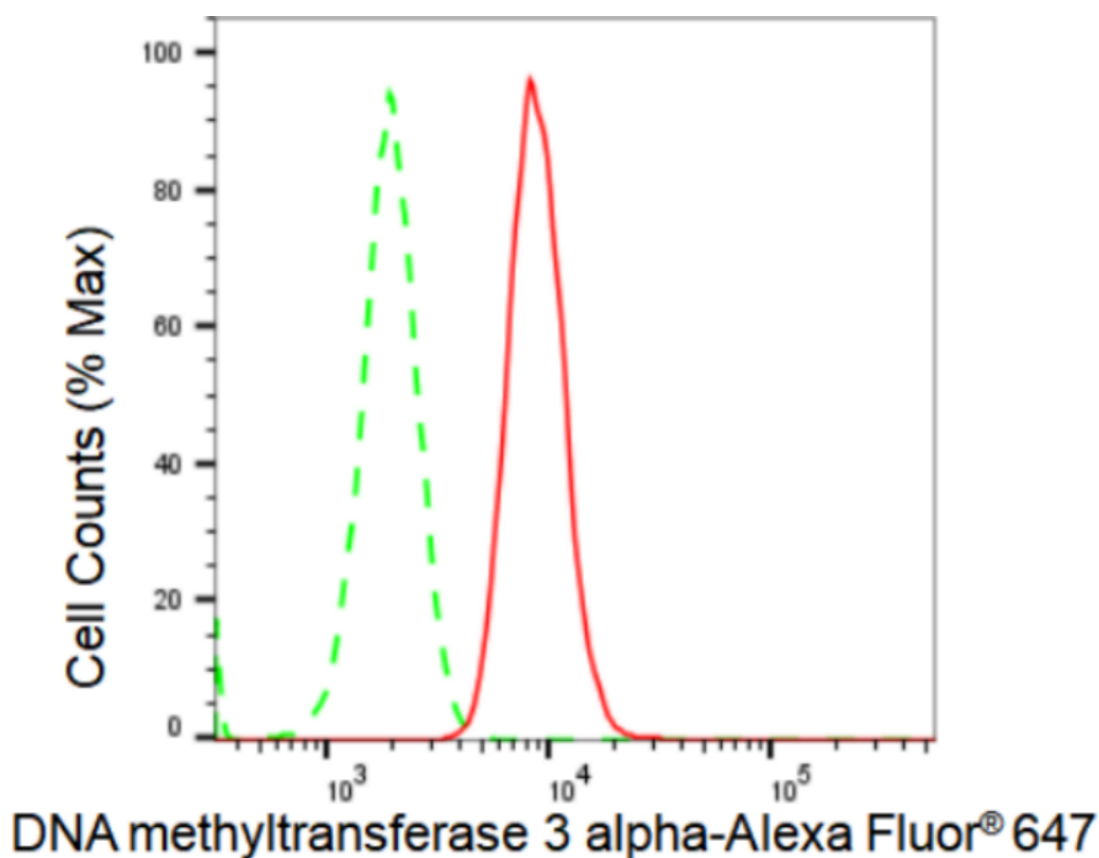
WWW.GENUINBIOTECH.COM

Anti-DNA methyltransferase 3 alpha Recombinant Rabbit Monoclonal Antibody

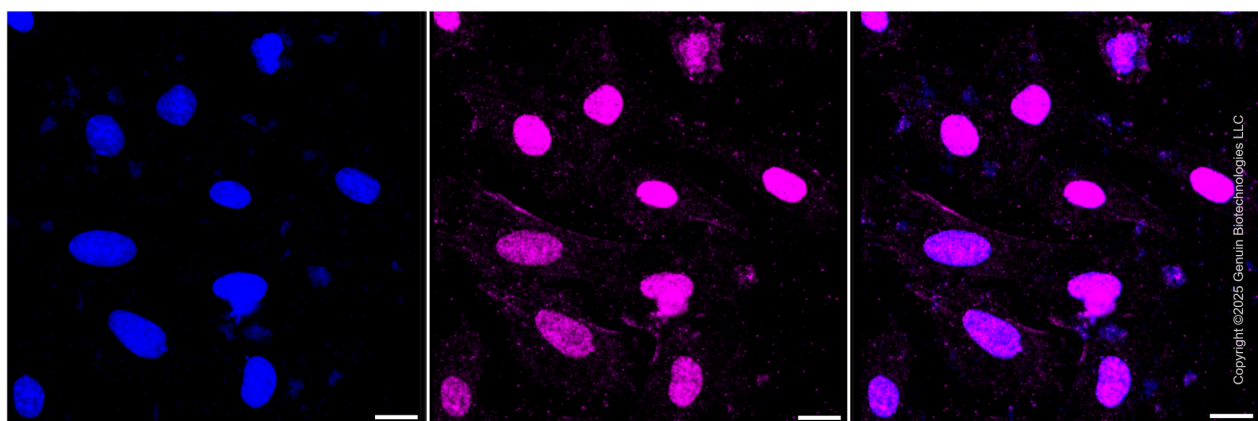
PAGE 2

Note: This product is for research use only.

Validation Data



Flow cytometric analysis of DNA methyltransferase 3 alpha expression in H9c2 cells using DNA methyltransferase 3 alpha antibody (Cat#1211, 1:2,000). Green, isotype control; red, DNA methyltransferase 3 alpha.



Immunocytochemical staining of H9C2 cells with anti-DNA methyltransferase 3 alpha antibody (Cat #1211, 1:1,000). Nuclei were stained blue with DAPI; DNA methyltransferase 3 alpha was stained magenta with Alexa Fluor® 647. Images were taken using Leica stellaris 5. Protein

SUPPORT

SUPPORT@GENUINBIOTECH.COM
TEL: +1-540-855-7041

ORDERS

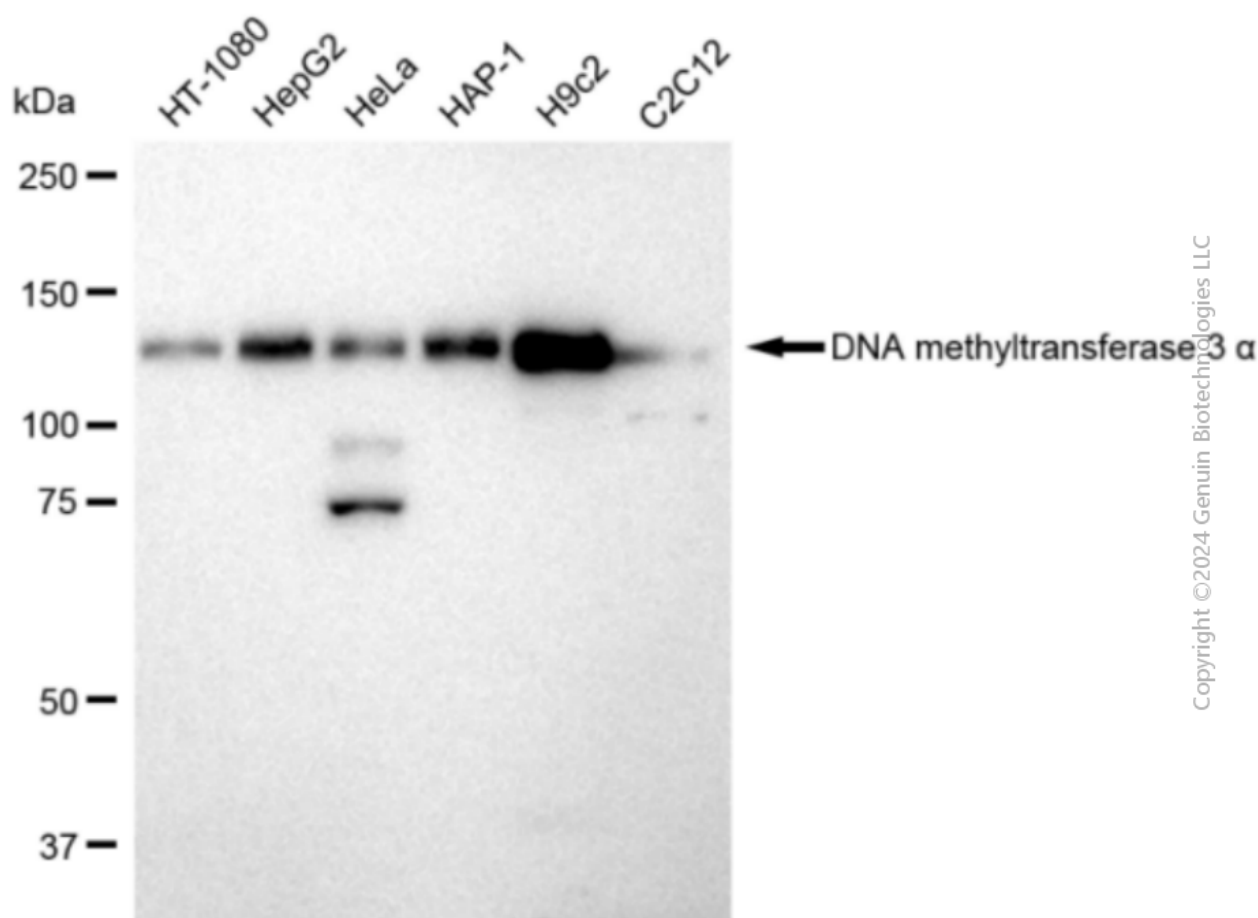
SALES@GENUINBIOTECH.COM
FAX: +1-540-855-7041

WWW.GENUINBIOTECH.COM

Anti-DNA methyltransferase 3 alpha Recombinant Rabbit Monoclonal Antibody

PAGE 3

abundance based on laser Intensity and smart gain: Medium. Scale bar, 20 μ m.



Western blotting analysis using anti-DNA methyltransferase 3 alpha antibody (Cat#1211). Total cell lysates (30 μ g) from various cell lines were loaded and separated by SDS-PAGE. The blot was incubated with anti-DNA methyltransferase 3 alpha antibody (Cat#1211, 1:5,000) and HRP-conjugated goat anti-rabbit secondary antibody (Cat#201, 1:20,000) respectively. Image was developed using FeQ™ ECL Substrate Kit (Cat#226).

SUPPORT

SUPPORT@GENUINBIOTECH.COM
TEL: +1-540-855-7041

ORDERS

SALES@GENUINBIOTECH.COM
FAX: +1-540-855-7041

WWW.GENUINBIOTECH.COM