

Anti-Phospholipase C gamma 1 Recombinant Rabbit Monoclonal Antibody



Catalog #: 1212

Aliases

PLCG1; Phospholipase C Gamma 1; PLC-II 2; PLC148; NCKAP3; PLC1; 1-Phosphatidylinositol 4,5-Bisphosphate Phosphodiesterase Gamma-1; Phospholipase C, Gamma 1 (Formerly Subtype 148); Phosphoinositide Phospholipase C-Gamma-1; Phospholipase C-II ; PLC-Gamma-1; EC 3.1.4.11; PLCgamma1; PLC-148; 1-Phosphatidyl-D-Myo-Inositol-4,5-Bisphosphate; Monophosphatidylinositol Phosphodiesterase; Triphosphoinositide Phosphodiesterase; Phosphatidylinositol Phospholipase ; Phosphoinositide Phospholipase C; Inositoltrisphosphohydrolase; Phospholipase C, Gamma 1; Phospholipase C-Gamma-1; Phosphoinositidase C; Phospholipase C-148; PLCGAMMA1

Background

Gene Name: PLCG1

NCBI Gene Entry: [5335](#)

UniProt Entry: [P19174](#)

Application Information

Molecular Weight: Predicted, 149 kDa; observed, 149 kDa

Clonality: Rabbit monoclonal antibody

Clone ID: 23GB2235

Species Reactivity: Human, mouse, rat

Applications Tested: Western blotting (WB), flow cytometry (FCM), immunocytochemistry (IC)

Immunogen

A synthesized peptide derived from human PLC gamma 1

Isotype

Rabbit IgG

Storage Buffer

Supplied in PBS (pH 7.4) containing 50% glycerol, and 0.02% sodium azide.

Storage

Store at -20 °C for one year.

Recommended Dilutions

Western Blotting (WB): 1:1,000-1:5,000

SUPPORT

SUPPORT@GENUINBIOTECH.COM
TEL: +1-540-855-7041

ORDERS

SALES@GENUINBIOTECH.COM
FAX: +1-540-855-7041

WWW.GENUINBIOTECH.COM

Anti-Phospholipase C gamma 1 Recombinant Rabbit Monoclonal Antibody

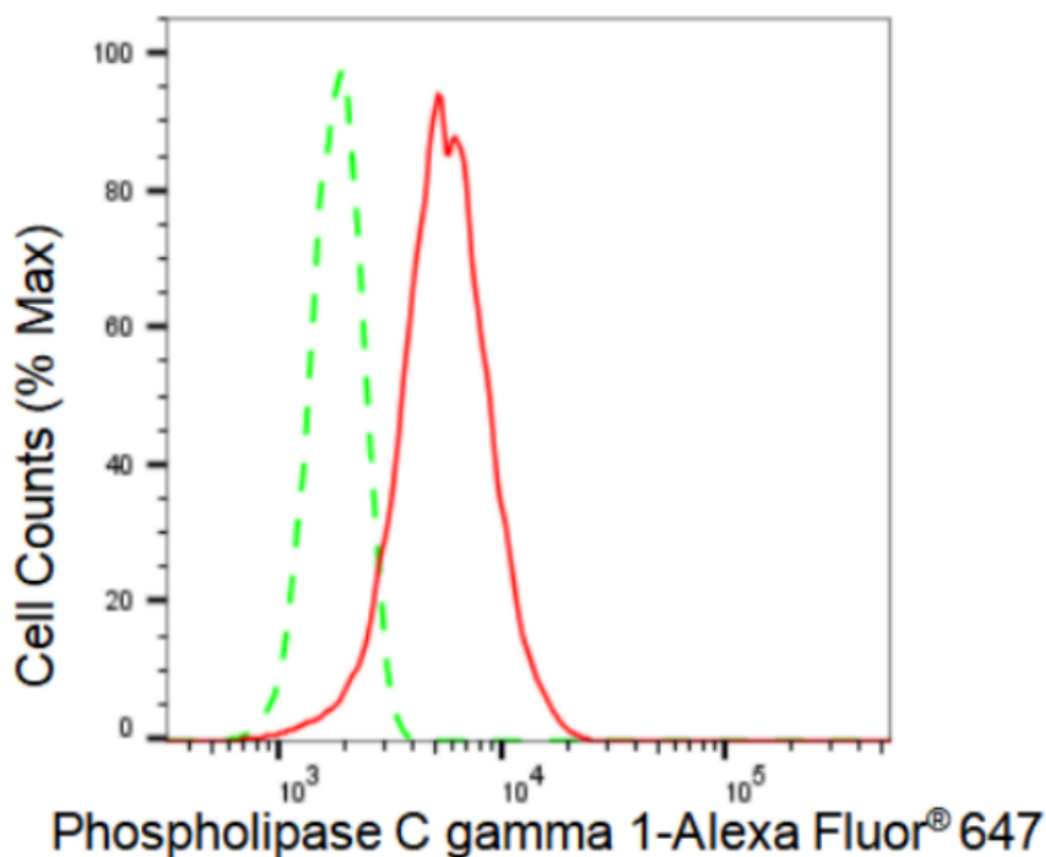
PAGE 2

Flow Cytometry (FCM): 1:2,000

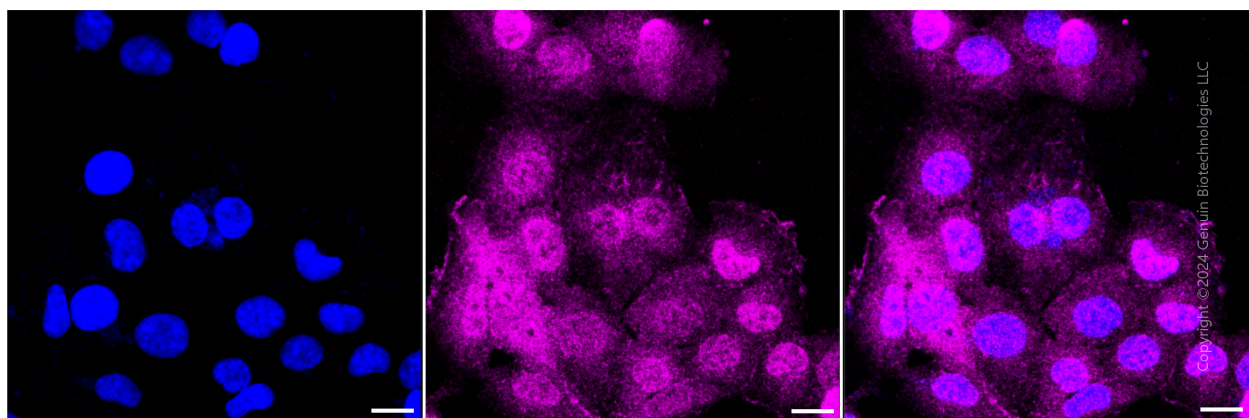
Immunocytochemistry (IC): 1:100-1:1,000

Note: This product is for research use only.

Validation Data



Flow cytometric analysis of Phospholipase C gamma 1 expression in HT-1080 cells using Phospholipase C gamma 1 antibody (Cat#1212, 1:2,000). Green, isotype control; red, Phospholipase C gamma 1.



SUPPORT

SUPPORT@GENUINBIOTECH.COM
TEL: +1-540-855-7041

ORDERS

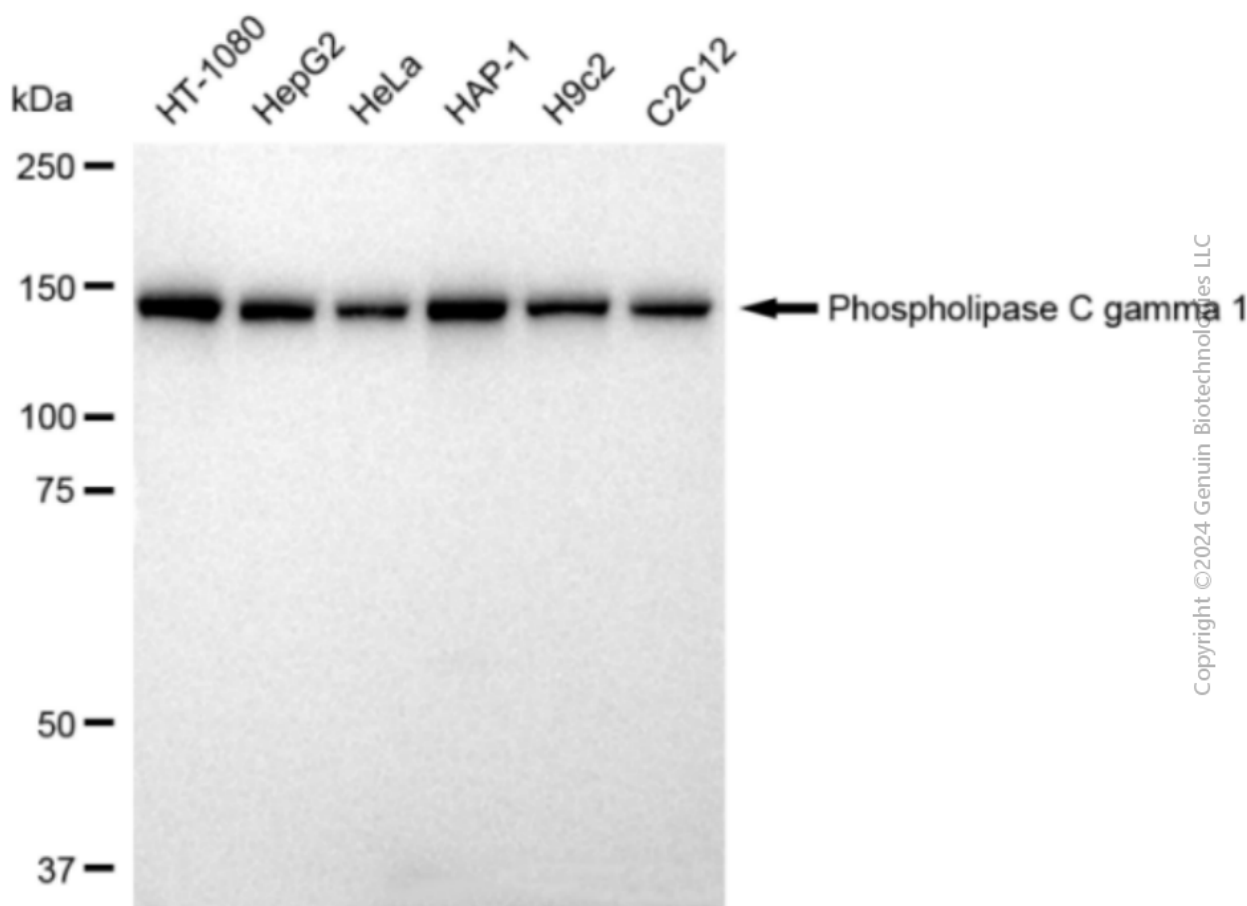
SALES@GENUINBIOTECH.COM
FAX: +1-540-855-7041

WWW.GENUINBIOTECH.COM

Anti-Phospholipase C gamma 1 Recombinant Rabbit Monoclonal Antibody

PAGE 3

Immunocytochemical staining of HT-1080 cells with Phospholipase C gamma 1 antibody (Cat#1212, 1:1,000). Nuclei were stained blue with DAPI; Phospholipase C gamma 1 was stained magenta with Alexa Fluor® 647. Images were taken using Leica stellaris 5. Protein abundance based on laser Intensity and smart gain: Medium. Scale bar: 20 μ m.



Copyright ©2024 Genuin Biotechnologies LLC

Western blotting analysis using anti-Phospholipase C gamma 1 antibody (Cat#1212). Total cell lysates (30 μ g) from various cell lines were loaded and separated by SDS-PAGE. The blot was incubated with anti-Phospholipase C gamma 1 antibody (Cat#1212, 1:5,000) and HRP-conjugated goat anti-rabbit secondary antibody (Cat#201, 1:20,000) respectively. Image was developed using FeQ™ ECL Substrate Kit (Cat#226).

SUPPORT

SUPPORT@GENUINBIOTECH.COM
TEL: +1-540-855-7041

ORDERS

SALES@GENUINBIOTECH.COM
FAX: +1-540-855-7041

WWW.GENUINBIOTECH.COM