

Anti-Splicing factor 3b subunit 3 Recombinant Rabbit Monoclonal Antibody



Catalog #: 1219

Aliases

SF3B3; Splicing Factor 3b Subunit 3; SAP130; Spliceosome-Associated Protein 130; KIAA0017; SF3b130; RSE1; Splicing Factor 3B Subunit 3; STAF130; SAP 130; Pre-mRNA Splicing Factor SF3b, 130 KDa Subunit; Pre-mRNA-Splicing Factor SF3b 130 KDa Subunit; Splicing Factor 3b, Subunit 3, 130kDa; Splicing Factor 3b, Subunit 3, 130kD; SF3B130

Background

Gene Name: SF3B3

NCBI Gene Entry: [23450](#)

UniProt Entry: [Q15393](#)

Application Information

Molecular Weight: Predicted, 136 kDa; observed, 136 kDa

Clonality: Rabbit monoclonal antibody

Clone ID: 23GB2260

Species Reactivity: Human, mouse, rat

Applications Tested: Western blotting (WB), flow cytometry (FCM), immunocytochemistry (IC)

Immunogen

A synthesized peptide derived from human CXCR7

Isotype

Rabbit IgG

Storage Buffer

Supplied in PBS (pH 7.4) containing 50% glycerol, and 0.02% sodium azide.

Storage

Store at -20 °C for one year.

Recommended Dilutions

Western Blotting (WB): 1:1,000-1:5,000

Flow Cytometry (FCM): 1:2,000

Immunocytochemistry (IC): 1:100-1:1,000

SUPPORT

SUPPORT@GENUINBIOTECH.COM
TEL: +1-540-855-7041

ORDERS

SALES@GENUINBIOTECH.COM
FAX: +1-540-855-7041

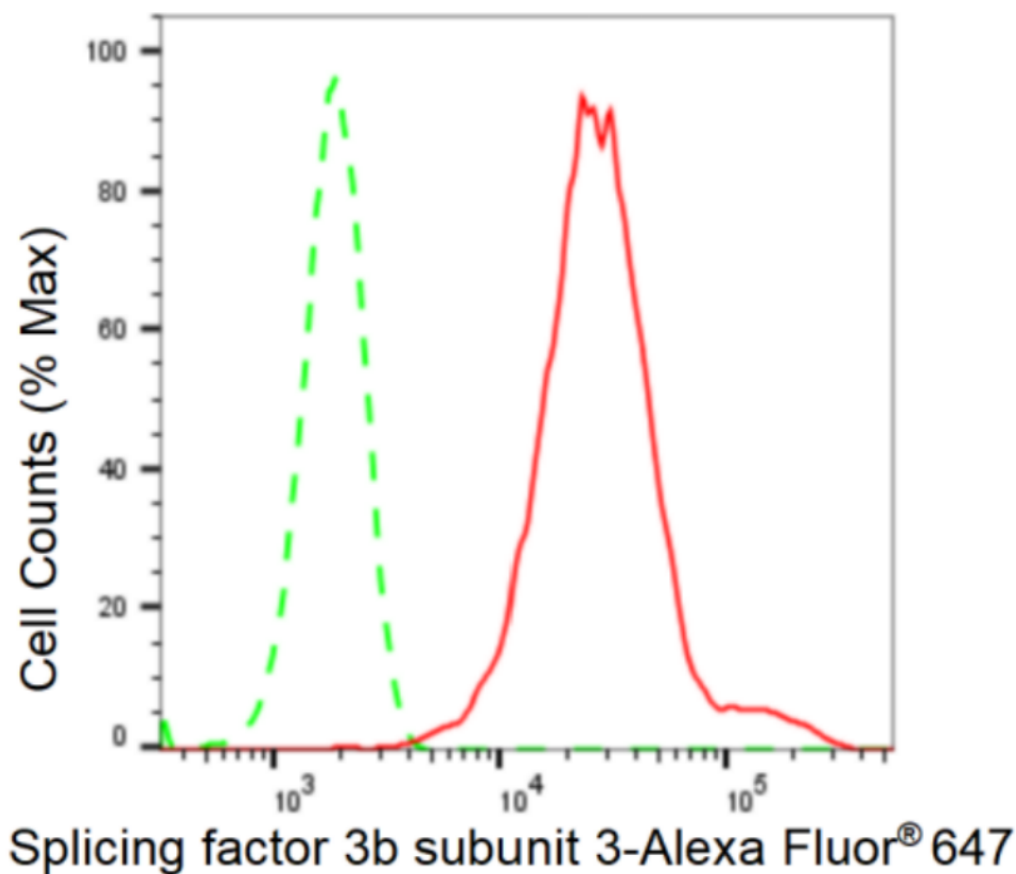
WWW.GENUINBIOTECH.COM

Anti-Splicing factor 3b subunit 3 Recombinant Rabbit Monoclonal Antibody

PAGE 2

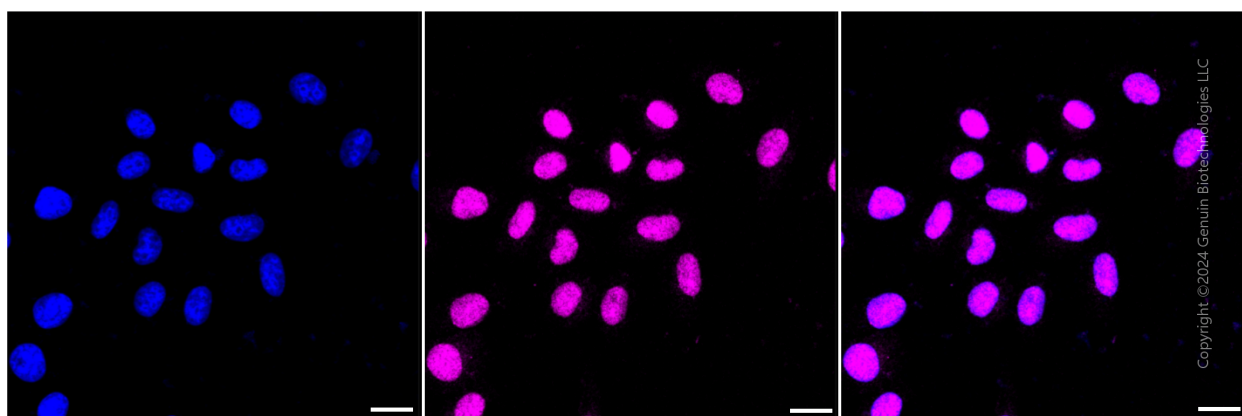
Note: This product is for research use only.

Validation Data



Copyright ©2024 Genuin Biotechnologies LLC

Flow cytometric analysis of Splicing factor 3b subunit 3 expression in HepG2 cells using Splicing factor 3b subunit 3 antibody (Cat#1219, 1:2,000). Green, isotype control; red, Splicing factor 3b subunit 3.



Copyright ©2024 Genuin Biotechnologies LLC

SUPPORT

SUPPORT@GENUINBIOTECH.COM
TEL: +1-540-855-7041

ORDERS

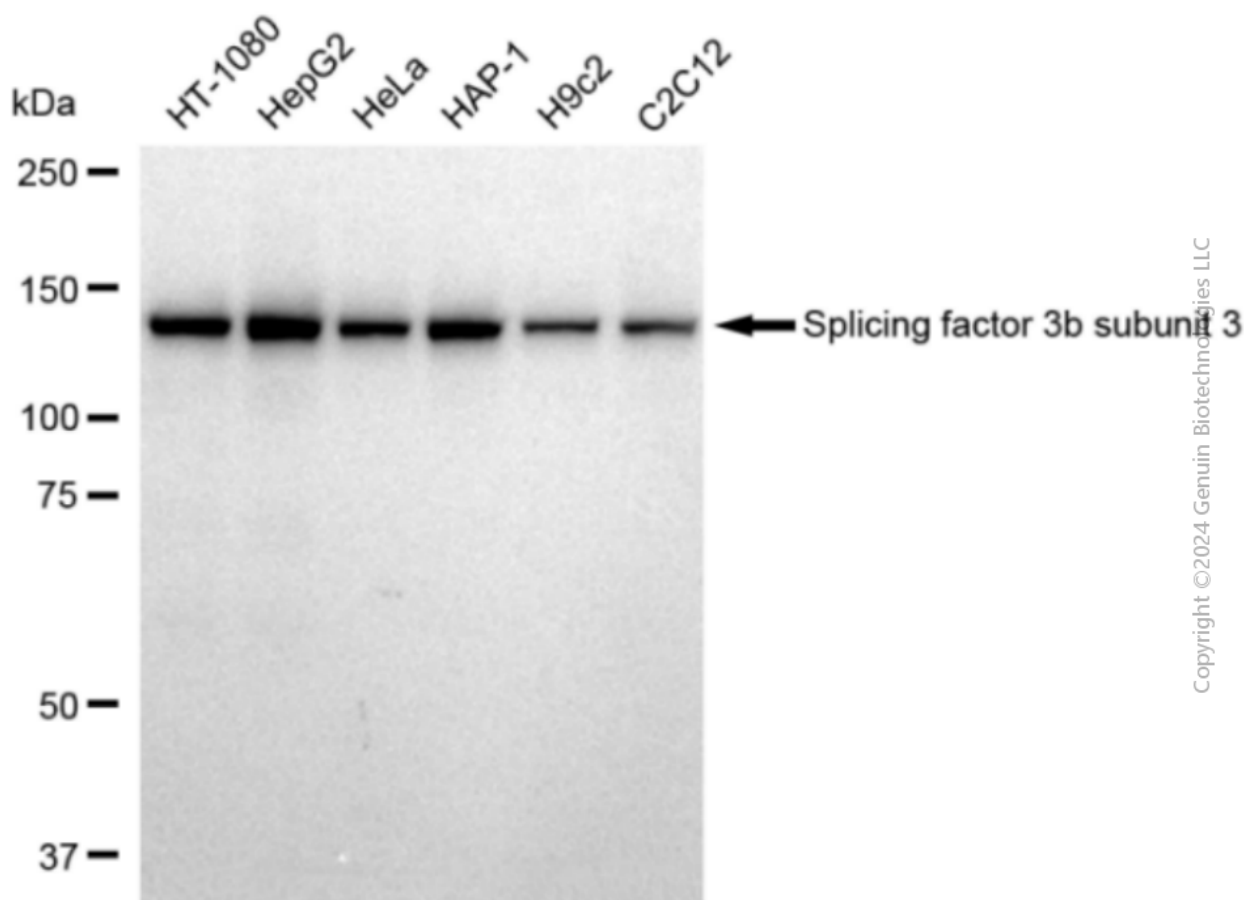
SALES@GENUINBIOTECH.COM
FAX: +1-540-855-7041

WWW.GENUINBIOTECH.COM

Anti-Splicing factor 3b subunit 3 Recombinant Rabbit Monoclonal Antibody

PAGE 3

stained magenta with Alexa Fluor® 647. Images were taken using Leica stellaris 5. Protein abundance based on laser Intensity and smart gain: Medium. Scale bar: 20 μ m.



Western blotting analysis using anti-Splicing factor 3b subunit 3 antibody (Cat#1219). Total cell lysates (30 μ g) from various cell lines were loaded and separated by SDS-PAGE. The blot was incubated with anti-Splicing factor 3b subunit 3 antibody (Cat#1219, 1:5,000) and HRP-conjugated goat anti-rabbit secondary antibody (Cat#201, 1:20,000) respectively. Image was developed using FeQ™ ECL Substrate Kit (Cat#226).

SUPPORT

SUPPORT@GENUINBIOTECH.COM
TEL: +1-540-855-7041

ORDERS

SALES@GENUINBIOTECH.COM
FAX: +1-540-855-7041

WWW.GENUINBIOTECH.COM