

Anti-MGEA5 Recombinant Rabbit Monoclonal Antibody



Catalog #: 1222

Aliases

OGA; O-GlcNAcase; NCOAT; MEA5; Nuclear Cytoplasmic O-GlcNAcase And Acetyltransferase; MGEA5; Meningioma Expressed Antigen 5 (Hyaluronidase); N-Acetyl-Beta-D-Glucosaminidase; Meningioma-Expressed Antigen 5; N-Acetyl-Beta-Glucosaminidase; Beta-N-Acetylglucosaminidase; Beta-N-Acetylhexosaminidase; Protein O-GlcNAcase; Beta-Hexosaminidase; Hyaluronidase In Meningioma; Bifunctional Protein NCOAT; EC 3.2.1.169; KIAA0679; HEXC

Background

Gene Name: OGA

NCBI Gene Entry: [10724](#)

UniProt Entry: [O60502](#)

Application Information

Molecular Weight: Predicted, 103 kDa; observed, 130 kDa

Clonality: Rabbit monoclonal antibody

Clone ID: 23GB2270

Species Reactivity: Human, mouse, rat

Applications Tested: Western blotting (WB), flow cytometry (FCM), immunocytochemistry (IC)

Immunogen

A synthesized peptide derived from human MGEA5

Isotype

Rabbit IgG

Storage Buffer

Supplied in PBS (pH 7.4) containing 50% glycerol, and 0.02% sodium azide.

Storage

Store at -20 °C for one year.

Recommended Dilutions

Western Blotting (WB): 1:1,000-1:5,000

Flow Cytometry (FCM): 1:2,000

Immunocytochemistry (IC): 1:100-1:1,000

SUPPORT

SUPPORT@GENUINBIOTECH.COM
TEL: +1-540-855-7041

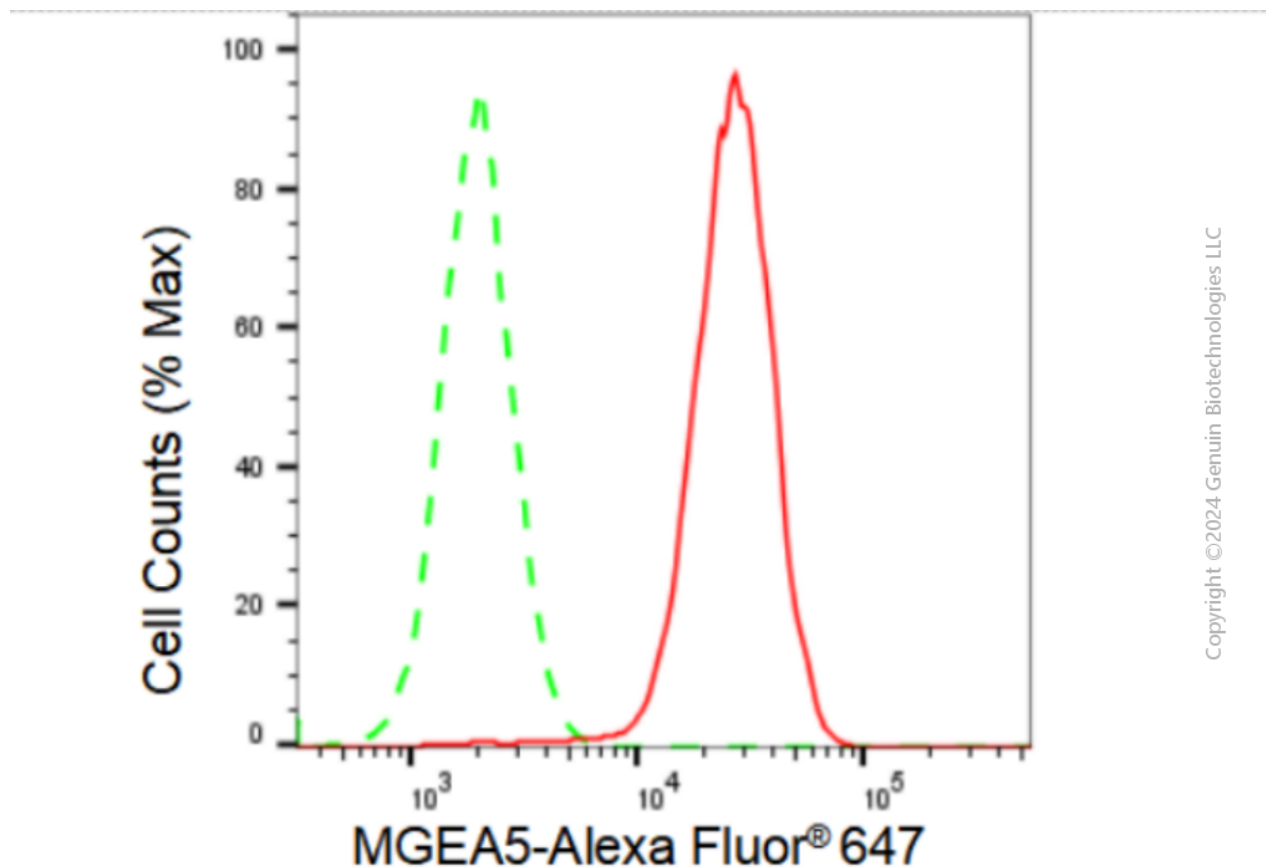
ORDERS

SALES@GENUINBIOTECH.COM
FAX: +1-540-855-7041

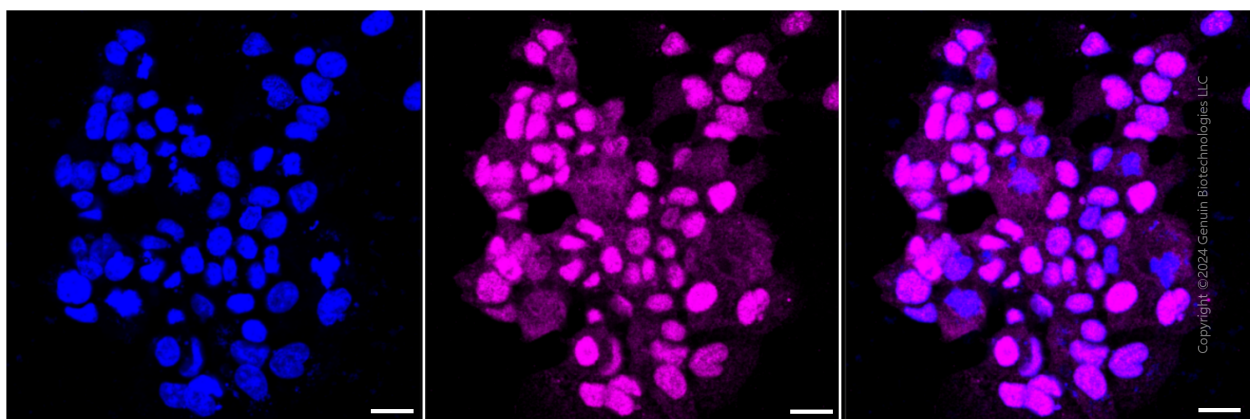
WWW.GENUINBIOTECH.COM

Note: This product is for research use only.

Validation Data



Flow cytometric analysis of MGEA5 expression in HAP-1 cells using MGEA5 antibody (Cat#1222, 1:2,000). Green, isotype control; red, MGEA5.



Immunocytochemical staining of HAP-1 cells with MGEA5 antibody (Cat#1222, 1:1,000). Nuclei were stained blue with DAPI; MGEA5 was stained magenta with Alexa Fluor® 647. Images were taken using Leica stellaris 5. Protein abundance based on laser Intensity and smart gain: High.

SUPPORT

SUPPORT@GENUINBIOTECH.COM
TEL: +1-540-855-7041

ORDERS

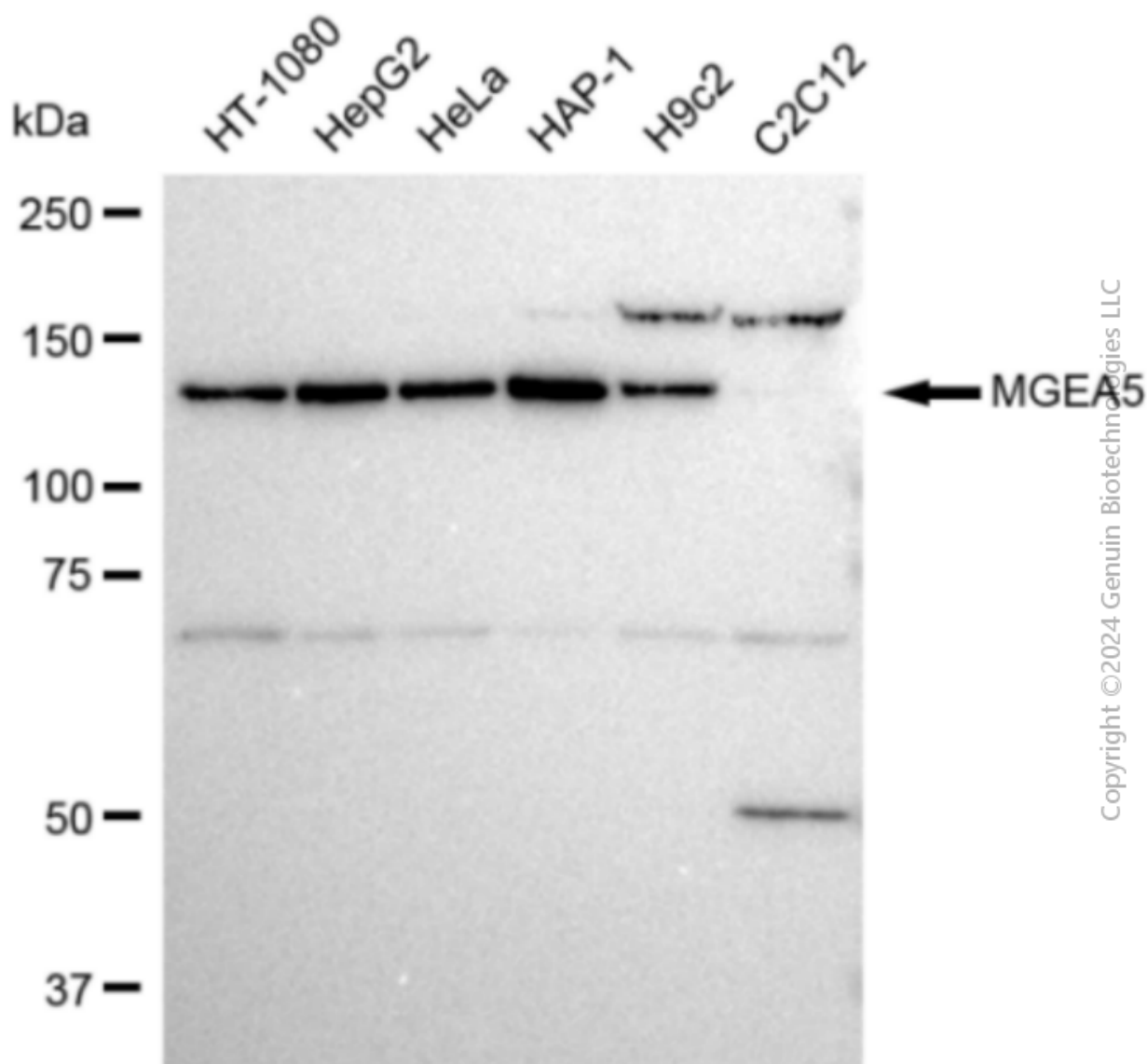
SALES@GENUINBIOTECH.COM
FAX: +1-540-855-7041

WWW.GENUINBIOTECH.COM

Anti-MGEA5 Recombinant Rabbit Monoclonal Antibody

PAGE 3

Scale bar: 20 μ m.



Western blotting analysis using anti-MGEA5 antibody (Cat#1222). Total cell lysates (30 μ g) from various cell lines were loaded and separated by SDS-PAGE. The blot was incubated with anti-MGEA5 antibody (Cat#1222, 1:5,000) and HRP-conjugated goat anti-rabbit secondary antibody (Cat#201, 1:20,000) respectively. Image was developed using FeQ™ ECL Substrate Kit (Cat#226).

SUPPORT

SUPPORT@GENUINBIOTECH.COM
TEL: +1-540-855-7041

ORDERS

SALES@GENUINBIOTECH.COM
FAX: +1-540-855-7041

WWW.GENUINBIOTECH.COM