

Anti-FosB Recombinant Rabbit Monoclonal Antibody



Catalog #: 1225

Aliases

FOSB; FosB Proto-Oncogene, AP-1 Transcription Factor Subunit; G0S3; GOSB; GOS3; AP-1; FBJ Murine Osteosarcoma Viral Oncogene Homolog B; Transcription Factor AP-1 Subunit FosB; G0/G1 Switch Regulatory Protein 3; Activator Protein 1; Protein FosB; MGC42291; FosB Proto-Oncogene, AP-1 Transcription Factor Subunit; Oncogene FOS-B; DKFZp686C0818; DKFZP686C0818

Background

Gene Name: FOSB

NCBI Gene Entry: [2354](#)

UniProt Entry: [P53539](#)

Application Information

Molecular Weight: Predicted, 36 kDa; observed, 48 kDa

Clonality: Rabbit monoclonal antibody

Clone ID: 23GB2285

Species Reactivity: Human

Applications Tested: Western blotting (WB), immunocytochemistry (IC), flow cytometry (FCM)

Immunogen

A synthesized peptide derived from human Fos B

Isotype

Rabbit IgG

Storage Buffer

Supplied in PBS (pH 7.4) containing 50% glycerol, and 0.02% sodium azide.

Storage

Store at -20 °C for one year.

Recommended Dilutions

Western Blotting (WB): 1:1,000-1:5,000

Immunocytochemistry (IC): 1:100-1:1,000

Flow Cytometry (FCM) : 1:2,000

SUPPORT

SUPPORT@GENUINBIOTECH.COM
TEL: +1-540-855-7041

ORDERS

SALES@GENUINBIOTECH.COM
FAX: +1-540-855-7041

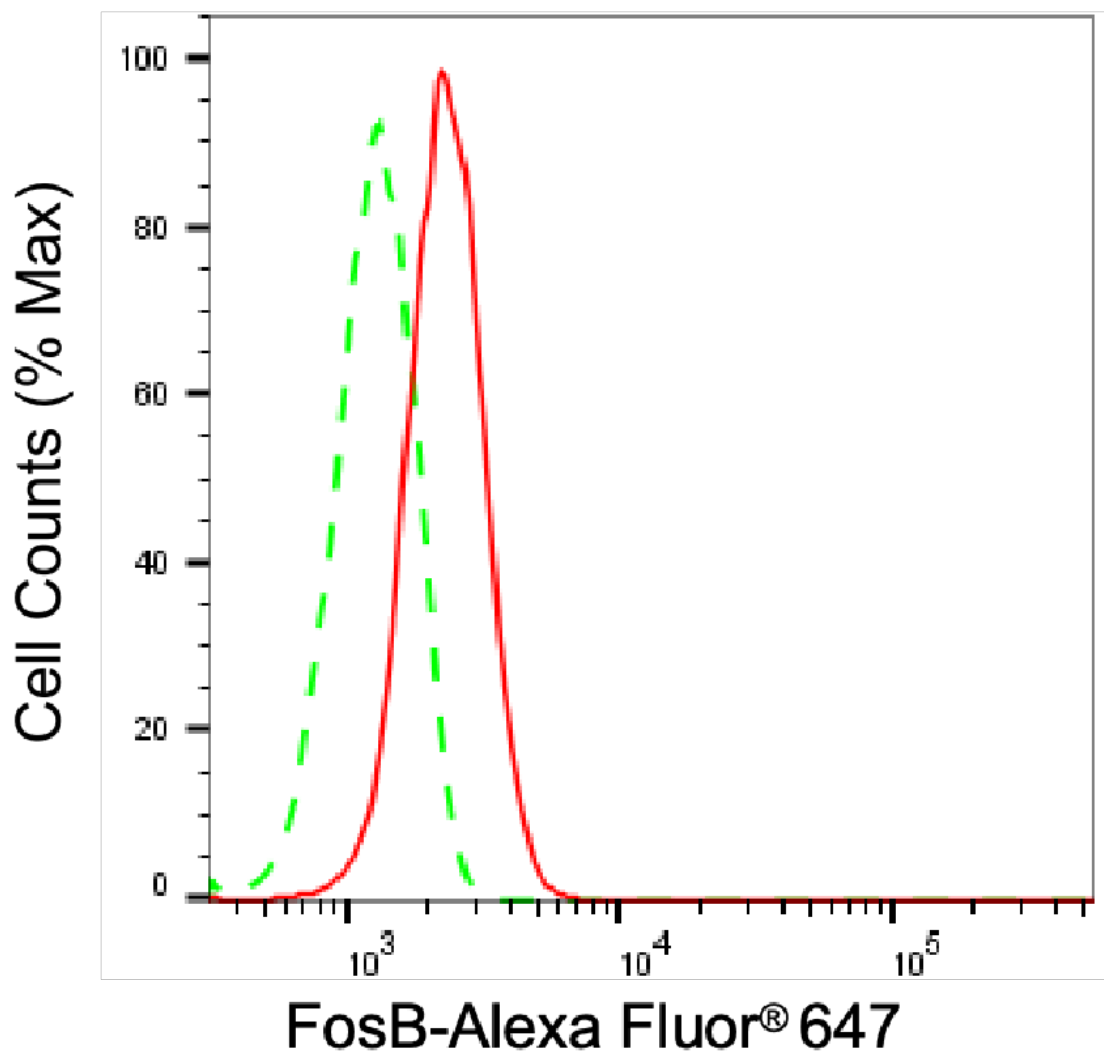
WWW.GENUINBIOTECH.COM

Anti-FosB Recombinant Rabbit Monoclonal Antibody

PAGE 2

Note: This product is for research use only.

Validation Data



Copyright ©2025 Genuin Biotechnologies LLC

Flow cytometric analysis of FosB expression in HepG2 cells using anti-FosB antibody (Cat#1225, 1:2,000). Green, isotype control; red, FosB.

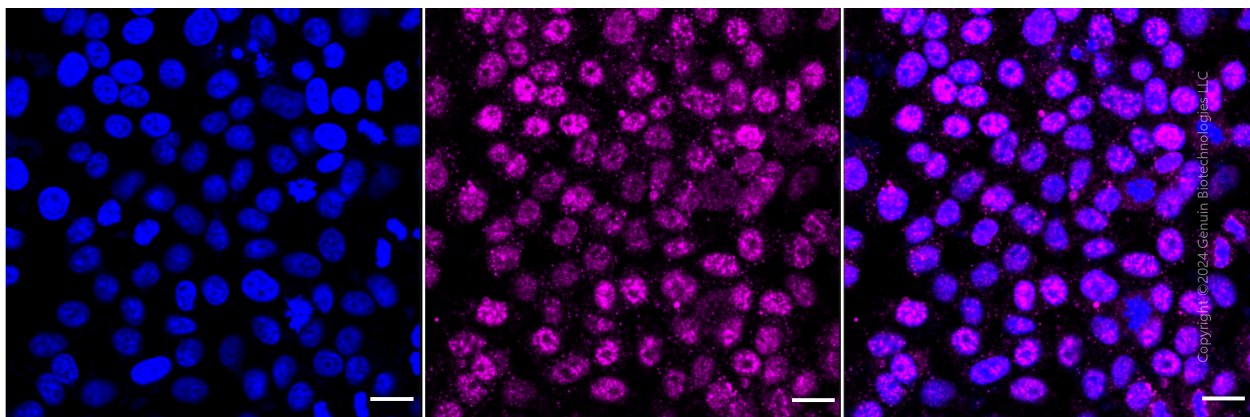
SUPPORT

SUPPORT@GENUINBIOTECH.COM
TEL: +1-540-855-7041

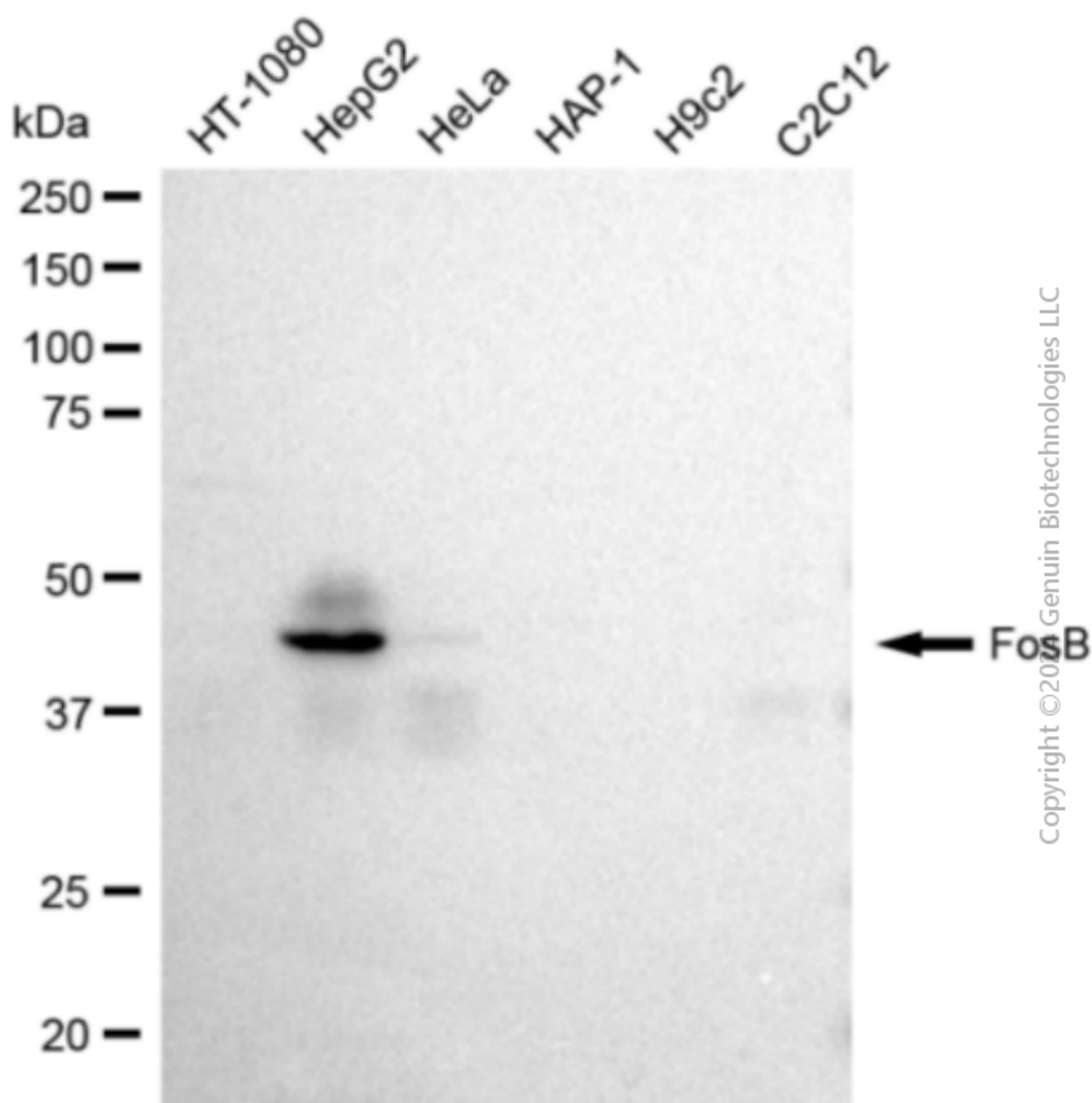
ORDERS

SALES@GENUINBIOTECH.COM
FAX: +1-540-855-7041

WWW.GENUINBIOTECH.COM



Immunocytochemical staining of HepG2 cells with anti-FosB antibody (Cat#1225, 1:1,000). Nuclei were stained blue with DAPI; FosB was stained magenta with Alexa Fluor® 647. Images were taken using Leica stellaris 5. Protein abundance based on laser Intensity and smart gain: Medium. Scale bar: 20 μ m.



Western blotting analysis using anti-FosB antibody (Cat#1225). Total cell lysates (30 µg) from various cell lines were loaded and separated by SDS-PAGE. The blot was incubated with anti-FosB antibody (Cat#1225, 1:5,000) and HRP-conjugated goat anti-rabbit secondary antibody (Cat#201, 1:20,000) respectively. Image was developed using FeQ™ ECL Substrate Kit (Cat#226).

SUPPORT

SUPPORT@GENUINBIOTECH.COM
TEL: +1-540-855-7041

ORDERS

SALES@GENUINBIOTECH.COM
FAX: +1-540-855-7041

WWW.GENUINBIOTECH.COM