

Anti-PP2A alpha + beta Recombinant Rabbit Monoclonal Antibody



Catalog #: 1228

Aliases

PPP2CA; Protein Phosphatase 2 Catalytic Subunit Alpha; Serine/Threonine-Protein Phosphatase 2A Catalytic Subunit Alpha Isoform; Protein Phosphatase 2, Catalytic Subunit, Alpha Isozyme; Replication Protein C; EC 3.1.3.16; PP2A-Alpha; PP2Calpha; PP2AC; RP-C; Protein Phosphatase 2 (Formerly 2A), Catalytic Subunit, Alpha Isoform; Protein Phosphatase 2A Catalytic Subunit, Alpha Isoform; PP2CALPHA; NEDLBA; PP2Ac; PP2CA; HJS3

Background

Gene Name: PPP2CA/PPP2CB

NCBI Gene Entry: [5515](#)

UniProt Entry: [P62714/P67775](#)

Application Information

Molecular Weight: Predicted, 36 kDa; observed, 36 kDa

Clonality: Rabbit monoclonal antibody

Clone ID: 23GB2300

Species Reactivity: Human, mouse, rat

Applications Tested: Western blotting (WB), flow cytometry (FCM), immunocytochemistry (IC)

Immunogen

A synthesized peptide derived from human alpha + beta PP2A

Isotype

Rabbit IgG

Storage Buffer

Supplied in PBS (pH 7.4) containing 50% glycerol, and 0.02% sodium azide.

Storage

Store at -20 °C for one year.

Recommended Dilutions

Western Blotting (WB): 1:1,000-1:5,000

Flow Cytometry (FCM): 1:2,000

Immunocytochemistry (IC): 1:100-1:1,000

SUPPORT

SUPPORT@GENUINBIOTECH.COM
TEL: +1-540-855-7041

ORDERS

SALES@GENUINBIOTECH.COM
FAX: +1-540-855-7041

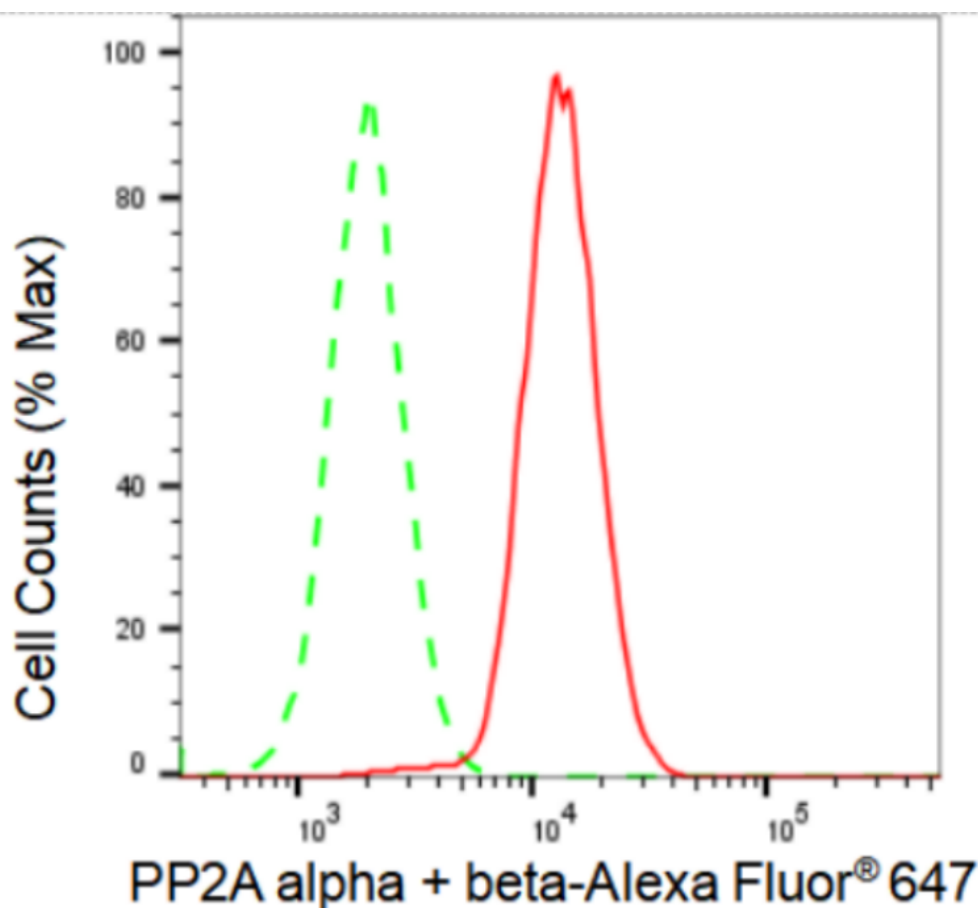
WWW.GENUINBIOTECH.COM

Anti-PP2A alpha + beta Recombinant Rabbit Monoclonal Antibody

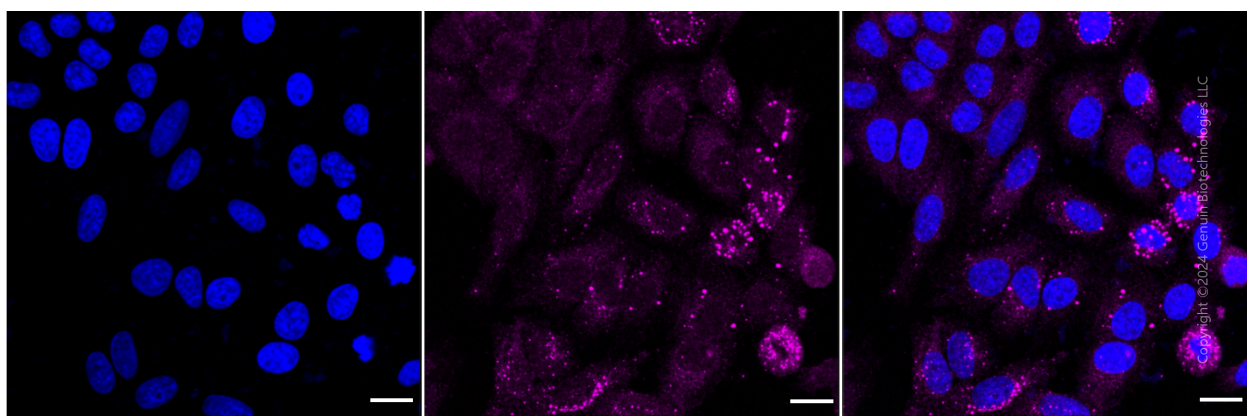
PAGE 2

Note: This product is for research use only.

Validation Data



Flow cytometric analysis of PP2A alpha + beta expression in HAP-1 cells using PP2A alpha + beta antibody (Cat#1228, 1:2,000). Green, isotype control; red, PP2A alpha + beta.



Immunocytochemical staining of HepG2 cells with anti-PP2A alpha + beta antibody (Cat#1228, 1:1,000). Nuclei were stained blue with DAPI; PP2A alpha + beta was stained magenta with Alexa Fluor® 647. Images were taken using Leica stellaris 5. Protein abundance based on laser Intensity

SUPPORT

SUPPORT@GENUINBIOTECH.COM
TEL: +1-540-855-7041

ORDERS

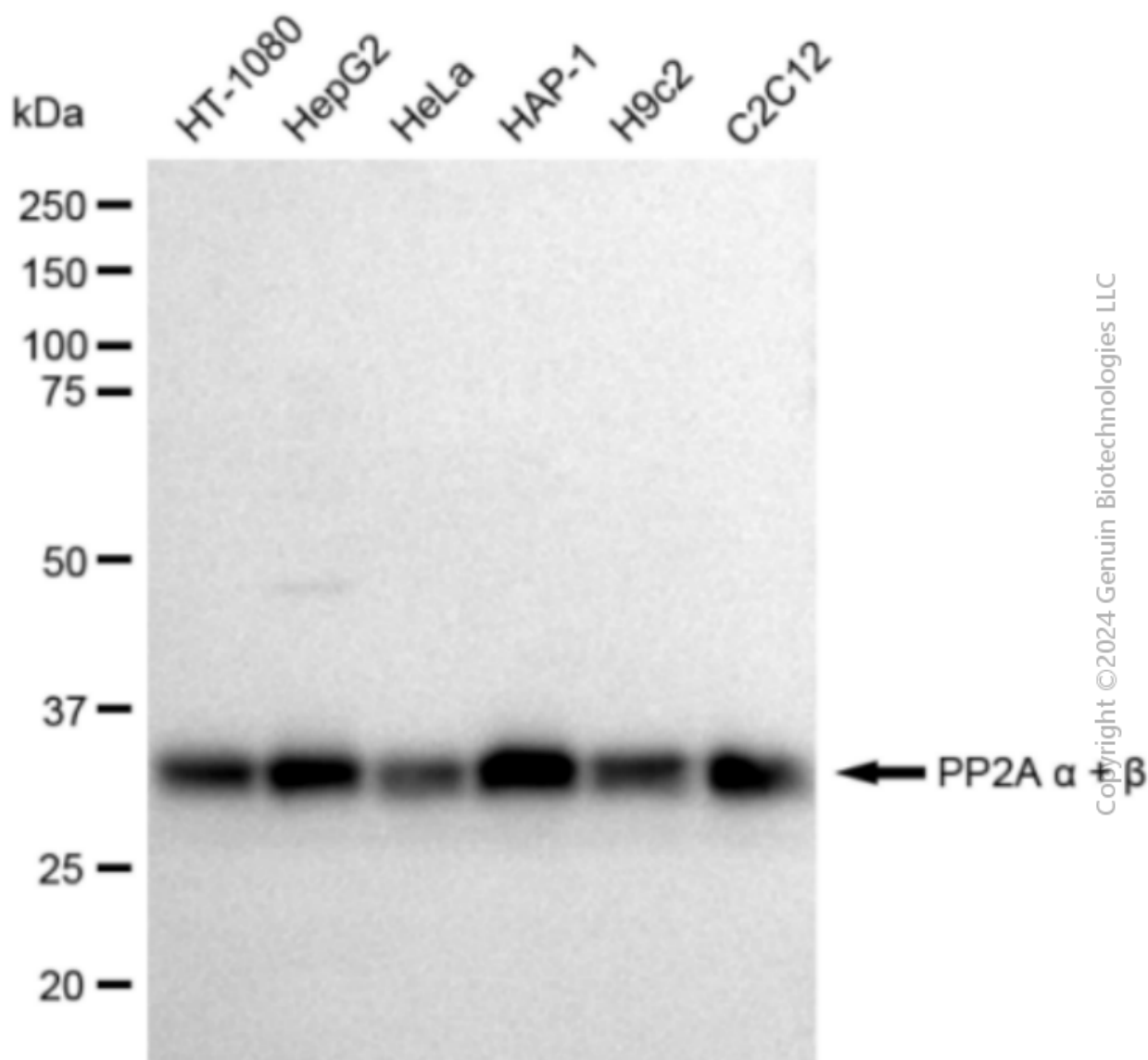
SALES@GENUINBIOTECH.COM
FAX: +1-540-855-7041

WWW.GENUINBIOTECH.COM

Anti-PP2A alpha + beta Recombinant Rabbit Monoclonal Antibody

PAGE 3

and smart gain: Medium. Scale bar: 20 μ m.



Western blotting analysis using anti-PP2A alpha + beta antibody (Cat#1228). Total cell lysates (30 μ g) from various cell lines were loaded and separated by SDS-PAGE. The blot was incubated with anti-PP2A alpha + beta antibody (Cat#1228, 1:5,000) and HRP-conjugated goat anti-rabbit secondary antibody (Cat#201, 1:20,000) respectively. Image was developed using FeQ™ ECL Substrate Kit (Cat#226).

SUPPORT

SUPPORT@GENUINBIOTECH.COM
TEL: +1-540-855-7041

ORDERS

SALES@GENUINBIOTECH.COM
FAX: +1-540-855-7041

WWW.GENUINBIOTECH.COM