

Anti-Cyclin dependent kinase inhibitor 2A Recombinant Rabbit Monoclonal Antibody



Catalog #: 1242

Aliases

CDKN2A; Cyclin Dependent Kinase Inhibitor 2A; P14ARF; CDK4I; MTS1; ARF; Cyclin-Dependent Kinase 4 Inhibitor A; P16-INK4A; P16INK4A; CDKN2; CMM2; INK4; P16; P19; P14; MLM; Cyclin-Dependent Kinase Inhibitor 2A (Melanoma, P16, Inhibits CDK4); Cyclin-Dependent Kinase Inhibitor 2A; Multiple Tumour Suppressor 1; Multiple Tumor Suppressor 1; CDKN2A/ARF Intron 2 LncRNA; Alternative Reading Frame; Inhibitor Of Cdk4 A; P19ARF; INK4A; MTS-1; CAI2; Cell Cycle; Negative Regulator Beta; P19 Alternate Open Reading Frame; P14 Alternate Open Reading Frame; CDK4 Inhibitor P16-INK4; Tumor Suppressor ARF; P16-INK4a; P16INK4a; P16-INK4; P16INK4; P19Arf; INK4a; TP16

Background

Gene Name: CDKN2A

NCBI Gene Entry: [1029](#)

UniProt Entry: [P42771](#)

Application Information

Molecular Weight: Predicted, 17 kDa; observed, 17 kDa

Clonality: Rabbit monoclonal antibody

Clone ID: 23GB1830

Species Reactivity: Human

Applications Tested: Western blotting (WB), flow cytometry (FCM), immunocytochemistry (IC)

Immunogen

A synthesized peptide derived from human p16 INK

Isotype

Rabbit IgG

Storage Buffer

Supplied in PBS (pH 7.4) containing 50% glycerol, and 0.02% sodium azide.

Storage

Store at -20 °C for one year.

Recommended Dilutions

Western Blotting (WB): 1:1,000-1:5,000

SUPPORT

SUPPORT@GENUINBIOTECH.COM
TEL: +1-540-855-7041

ORDERS

SALES@GENUINBIOTECH.COM
FAX: +1-540-855-7041

WWW.GENUINBIOTECH.COM

Anti-Cyclin dependent kinase inhibitor 2A Recombinant Rabbit Monoclonal Antibody

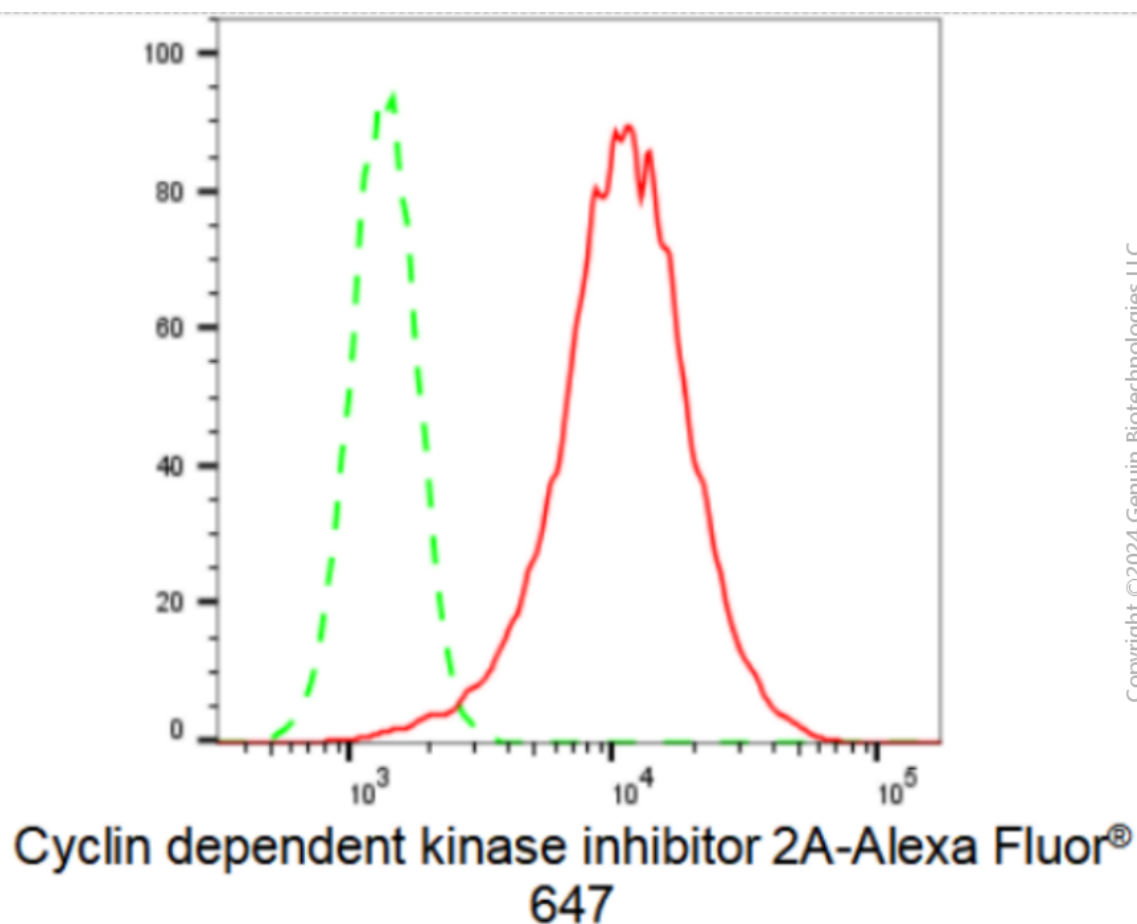
PAGE 2

Flow Cytometry (FCM): 1:2,000

Immunocytochemistry (IC): 1:100-1:1,000

Note: This product is for research use only.

Validation Data



Flow cytometric analysis of Cyclin dependent kinase inhibitor 2A expression in HepG2 cells using Cyclin dependent kinase inhibitor 2A antibody (Cat#1242, 1:2,000). Green, isotype control; red, Cyclin dependent kinase inhibitor 2A

SUPPORT

SUPPORT@GENUINBIOTECH.COM
TEL: +1-540-855-7041

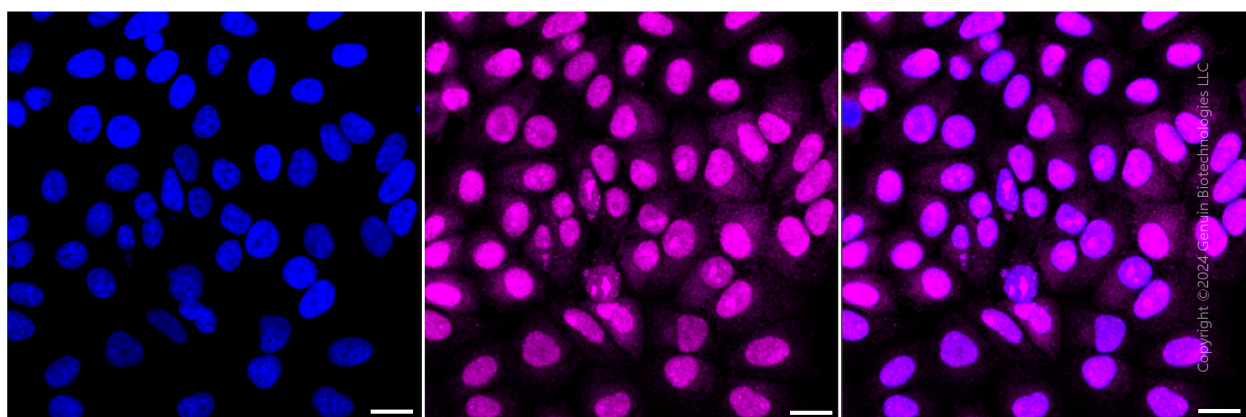
ORDERS

SALES@GENUINBIOTECH.COM
FAX: +1-540-855-7041

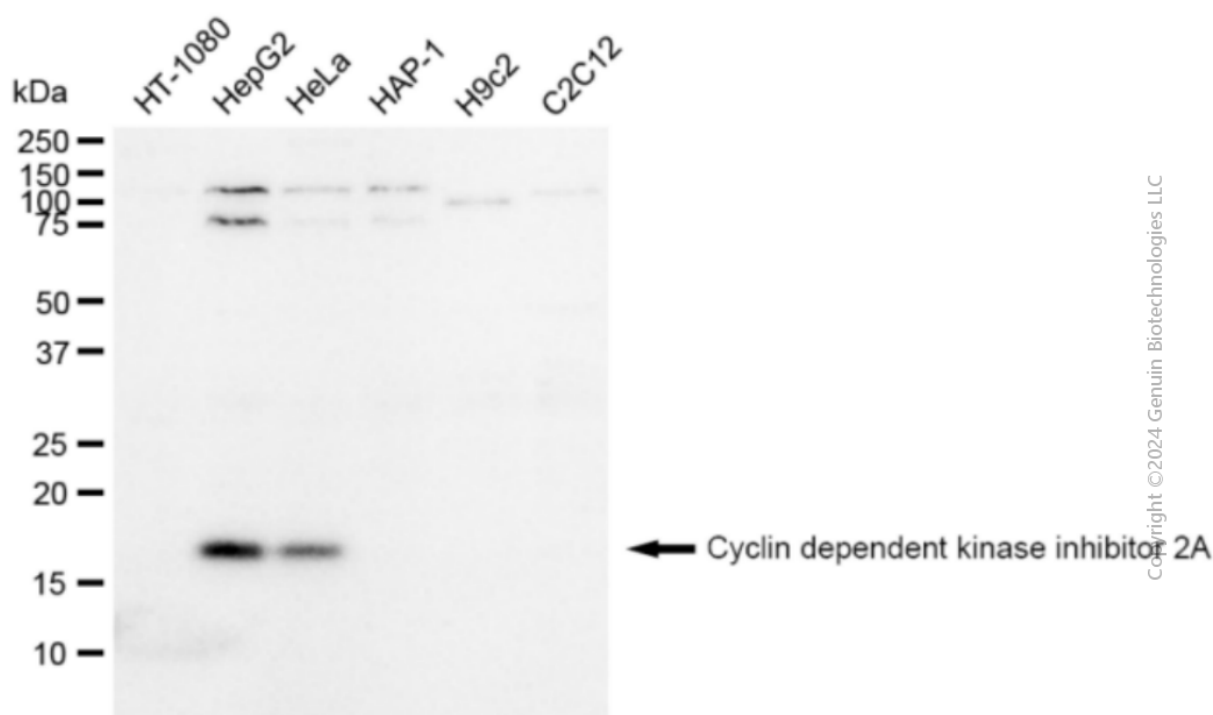
WWW.GENUINBIOTECH.COM

Anti-Cyclin dependent kinase inhibitor 2A Recombinant Rabbit Monoclonal Antibody

PAGE 3



Immunocytochemical staining of HepG2 cells with Cyclin dependent kinase inhibitor 2A antibody (Cat#1242, 1:1,000). Nuclei were stained blue with DAPI; Cyclin dependent kinase inhibitor 2A was stained magenta with Alexa Fluor® 647. Images were taken using Leica stellaris 5. Protein abundance based on laser Intensity and smart gain: High. Scale bar: 20



Western blotting analysis using anti-Cyclin dependent kinase inhibitor 2A antibody (Cat#1242). Total cell lysates (30 µg) from various cell lines were loaded and separated by SDS-PAGE. The blot was incubated with anti-Cyclin dependent kinase inhibitor 2A antibody (Cat#1242, 1:5,000) and HRP-conjugated goat anti-rabbit secondary antibody (Cat#201, 1:20,000) respectively. Image was developed using FeQ™ ECL Substrate Kit (Cat#226).

SUPPORT

SUPPORT@GENUINBIOTECH.COM
TEL: +1-540-855-7041

ORDERS

SALES@GENUINBIOTECH.COM
FAX: +1-540-855-7041

WWW.GENUINBIOTECH.COM