

Anti-Cyclin dependent kinase 9 Recombinant Rabbit Monoclonal Antibody



Catalog #: 1249

Aliases

Cyclin Dependent Kinase 9; TAK; PITALRE; CDC2L4; Tat-Associated Kinase Complex Catalytic Subunit; Cell Division Cycle 2-Like Protein Kinase 4; Cell Division Protein Kinase 9; Cyclin-Dependent Kinase 9; C-2k; C-2K; Cyclin-Dependent Kinase 9 (CDC2-Related Kinase); Serine/Threonine Protein Kinase PITALRE; Serine/Threonine-Protein Kinase PITALRE; CDC2-Related Kinase; EC 2.7.11.22; EC 2.7.11.23; EC 2.7.11; CTK1

Background

Gene Name: CDK9

NCBI Gene Entry: [1025](#)

UniProt Entry: [P50750](#)

Application Information

Molecular Weight: Predicted, 43 kDa; observed, 49 kDa

Clonality: Rabbit monoclonal antibody

Clone ID: 23GB1325

Species Reactivity: Human, mouse, rat

Applications Tested: Western blotting (WB), flow cytometry (FCM), immunocytochemistry (IC)

Immunogen

A synthesized peptide derived from human CDK9

Isotype

Rabbit IgG

Storage Buffer

Supplied in PBS (pH 7.4) containing 50% glycerol, and 0.02% sodium azide.

Storage

Store at -20 °C for one year.

Recommended Dilutions

Western Blotting (WB): 1:1,000-1:5,000

Flow Cytometry (FCM): 1:2,000

Immunocytochemistry (IC): 1:100-1:1,000

SUPPORT

SUPPORT@GENUINBIOTECH.COM
TEL: +1-540-855-7041

ORDERS

SALES@GENUINBIOTECH.COM
FAX: +1-540-855-7041

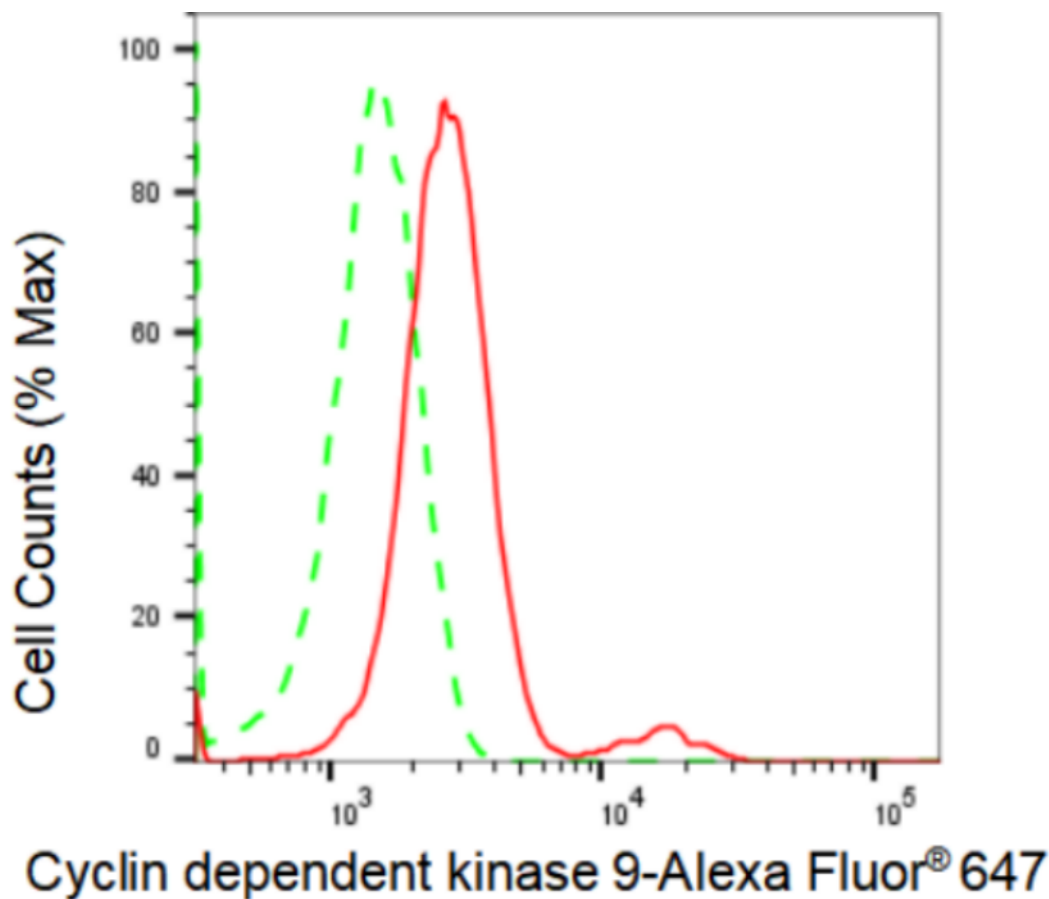
WWW.GENUINBIOTECH.COM

Anti-Cyclin dependent kinase 9 Recombinant Rabbit Monoclonal Antibody

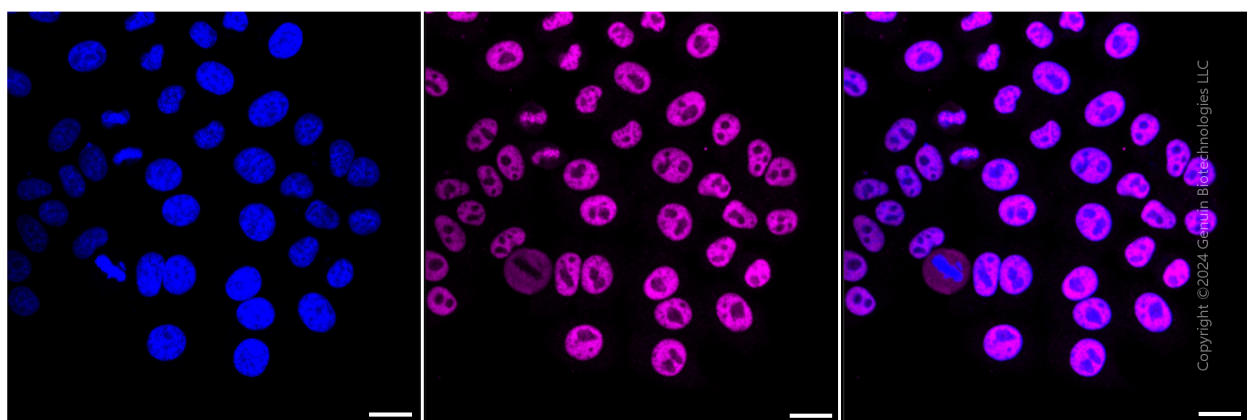
PAGE 2

Note: This product is for research use only.

Validation Data



Flow cytometric analysis of Cyclin dependent kinase 9 expression in HepG2 cells using Cyclin dependent kinase 9 antibody (Cat#1249, 1:2,000). Green, isotype control; red, Cyclin dependent kinase 9.



Immunocytochemical staining of HepG2 cells with Cyclin dependent kinase 9 antibody (Cat#1249, 1:1,000). Nuclei were stained blue with DAPI; Cyclin dependent kinase 9 was stained

SUPPORT

SUPPORT@GENUINBIOTECH.COM
TEL: +1-540-855-7041

ORDERS

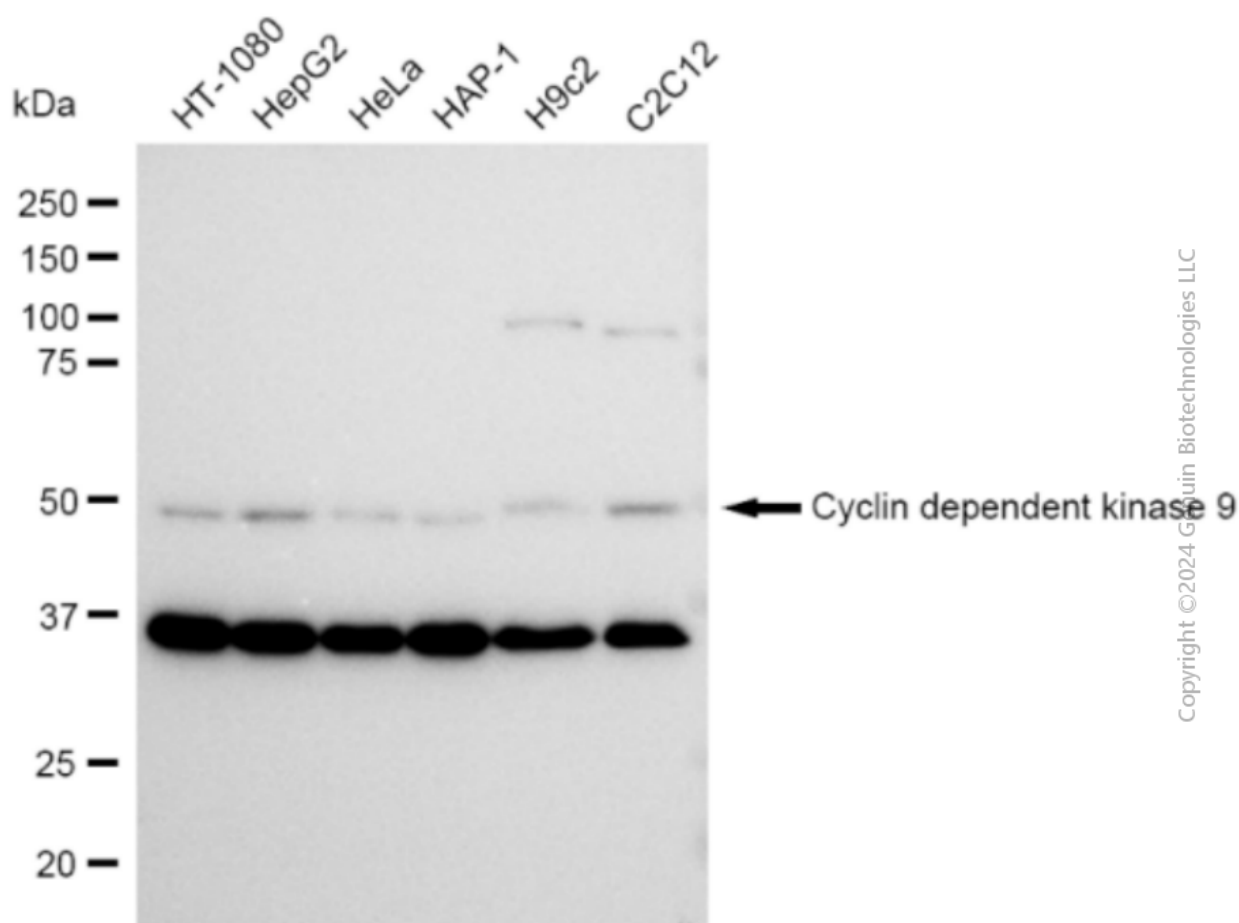
SALES@GENUINBIOTECH.COM
FAX: +1-540-855-7041

WWW.GENUINBIOTECH.COM

Anti-Cyclin dependent kinase 9 Recombinant Rabbit Monoclonal Antibody

PAGE 3

magenta with Alexa Fluor® 647. Images were taken using Leica stellaris 5. Protein abundance based on laser Intensity and smart gain: High. Scale bar: 20 μ m.



Western blotting analysis using anti-Cyclin dependent kinase 9 antibody (Cat#1249). Total cell lysates (30 μ g) from various cell lines were loaded and separated by SDS-PAGE. The blot was incubated with anti-Cyclin dependent kinase 9 antibody (Cat#1249, 1:5,000) and HRP-conjugated goat anti-rabbit secondary antibody (Cat#201, 1:20,000) respectively. Image was developed using FeQ™ ECL Substrate Kit (Cat#226)

SUPPORT

SUPPORT@GENUINBIOTECH.COM
TEL: +1-540-855-7041

ORDERS

SALES@GENUINBIOTECH.COM
FAX: +1-540-855-7041

WWW.GENUINBIOTECH.COM