

# Anti-Histone deacetylase 2 Recombinant Rabbit Monoclonal Antibody



**Catalog #: 1258**

## Aliases

Histone Deacetylase 2; KDAC2; RPD3; YAF1; Protein Deacylase HDAC2; EC 3.5.1.98 48; HD2; Transcriptional Regulator Homolog RPD3; YY1-Associated Factor 1; EC 3.5.1.-

## Background

Gene Name: HDAC2

NCBI Gene Entry: [3066](#)

UniProt Entry: [Q92769](#)

## Application Information

Molecular Weight: Predicted, 55 kDa; observed, 55 kDa

Clonality: Rabbit monoclonal antibody

Clone ID: 23GB2900

Species Reactivity: Human, mouse

Applications Tested: Western blotting (WB), flow cytometry (FCM), immunocytochemistry (IC)

## Immunogen

A synthesized peptide derived from human HDAC2

## Isotype

Rabbit IgG

## Storage Buffer

Supplied in PBS (pH 7.4) containing 50% glycerol, and 0.02% sodium azide.

## Storage

Store at -20 °C for one year.

## Recommended Dilutions

Western Blotting (WB): 1:1,000-1:5,000

Flow Cytometry (FCM): 1:2,000

Immunocytochemistry (IC): 1:100-1:1,000

**Note:** This product is for research use only.

## Validation Data

---

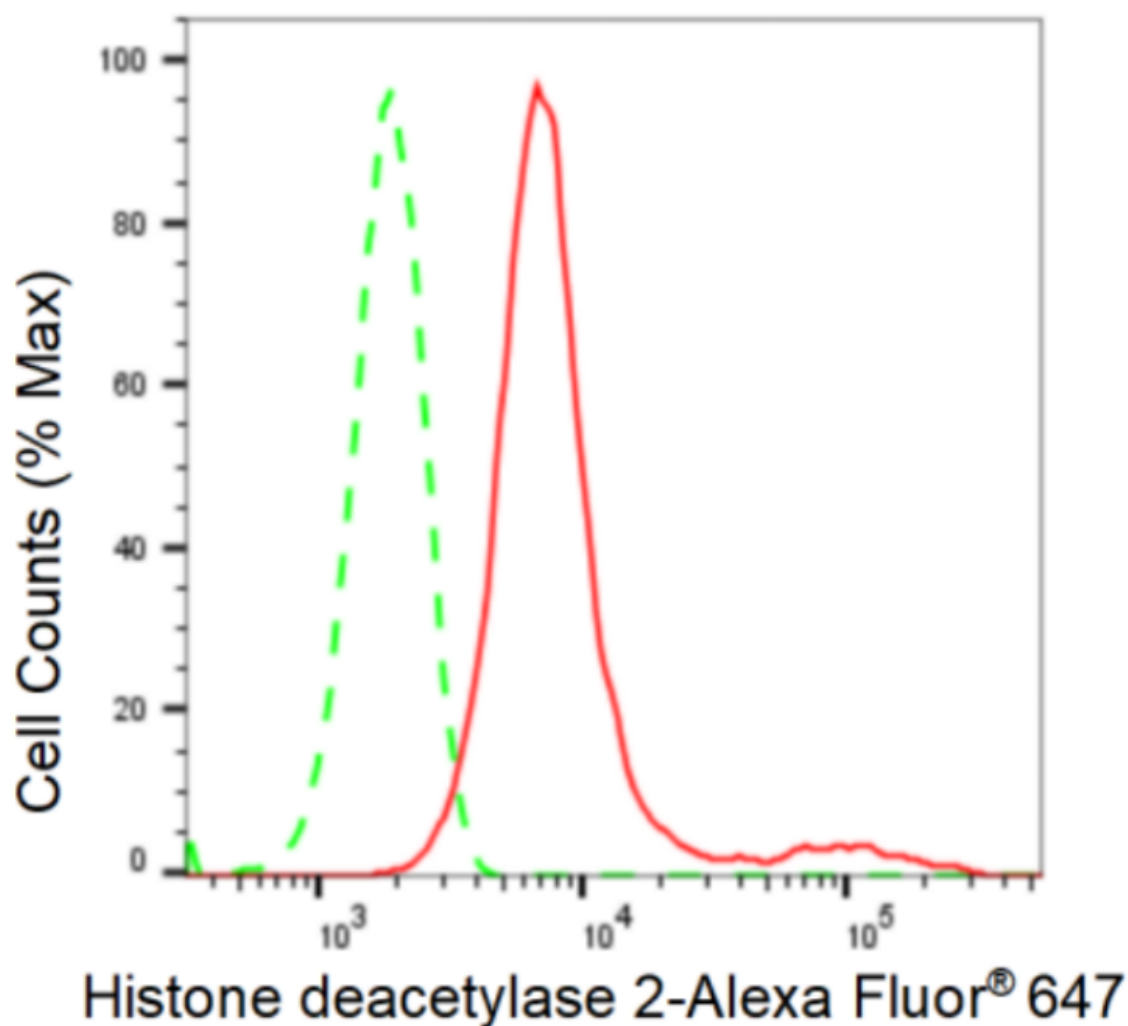
### SUPPORT

SUPPORT@GENUINBIOTECH.COM  
TEL: +1-540-855-7041

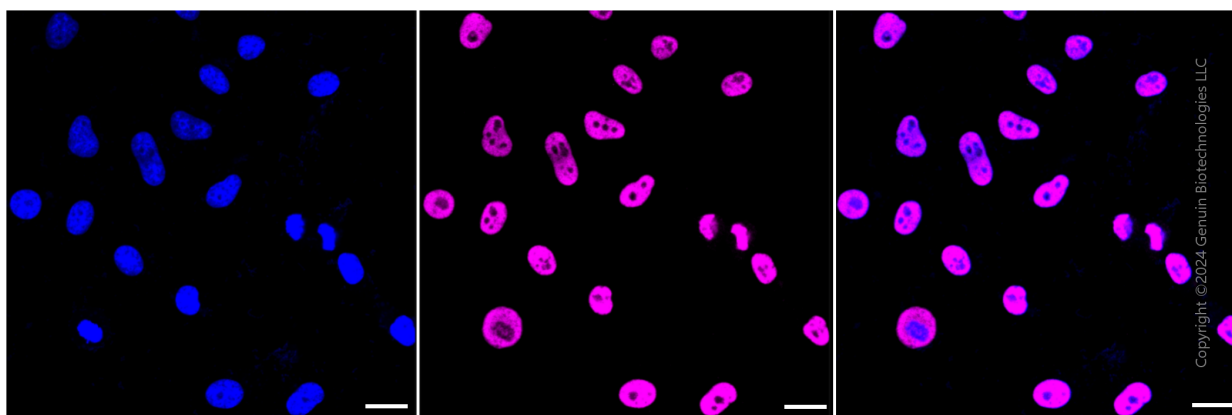
### ORDERS

SALES@GENUINBIOTECH.COM  
FAX: +1-540-855-7041

[WWW.GENUINBIOTECH.COM](http://WWW.GENUINBIOTECH.COM)



Flow cytometric analysis of Histone deacetylase 2 expression in HepG2 cells using Histone deacetylase 2 antibody (Cat#1258, 1:2,000). Green, isotype control; red, Histone deacetylase 2.

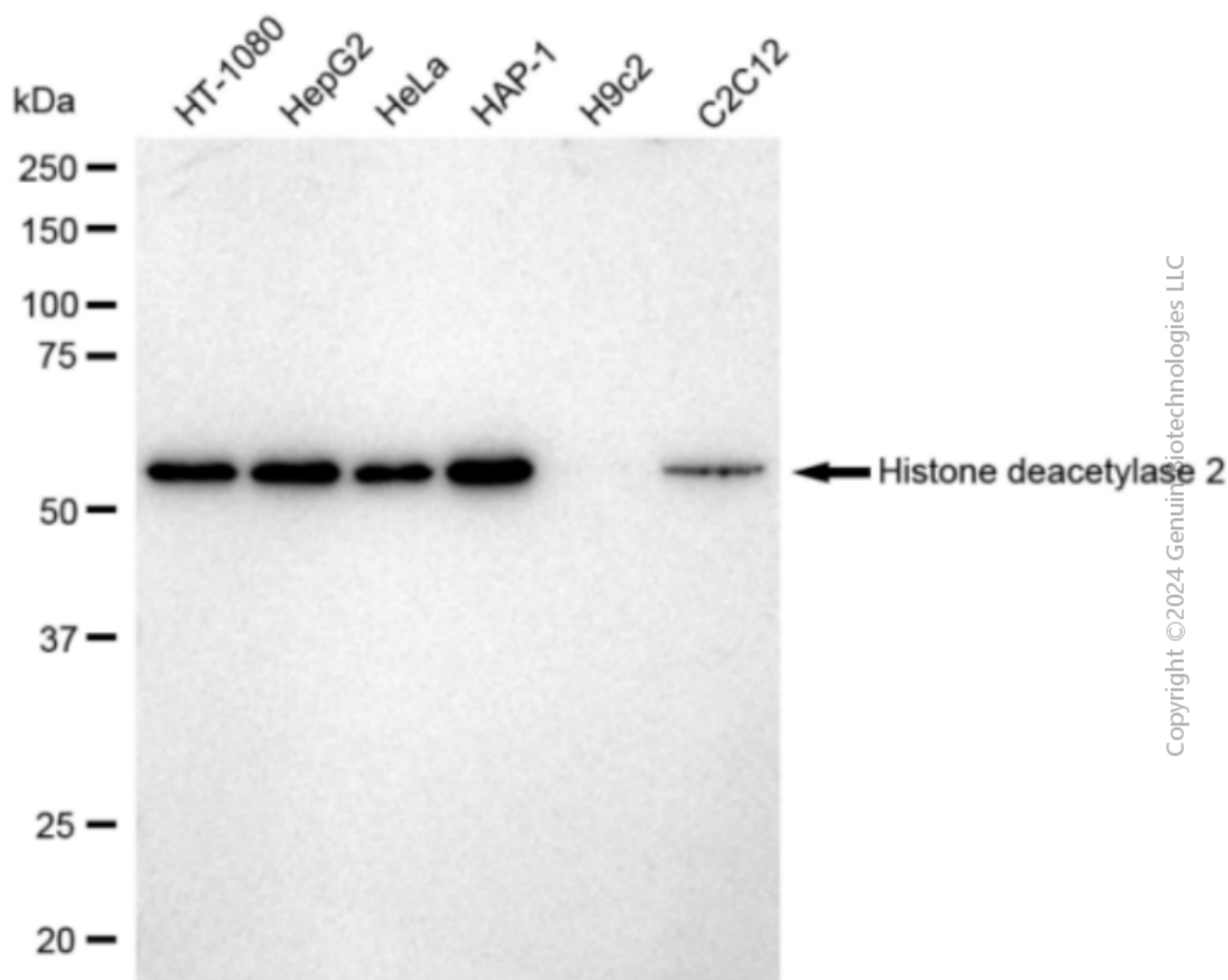


Immunocytochemical staining of HepG2 cells with Histone deacetylase 2 antibody (Cat#1258, 1:1,000). Nuclei were stained blue with DAPI; Histone deacetylase 2 was stained magenta with

## Anti-Histone deacetylase 2 Recombinant Rabbit Monoclonal Antibody

PAGE 3

Alexa Fluor® 647. Images were taken using Leica stellaris 5. Protein abundance based on laser Intensity and smart gain: High. Scale bar: 20  $\mu$ m.



Western blotting analysis using anti-Histone deacetylase 2 antibody (Cat#1258). Total cell lysates (30  $\mu$ g) from various cell lines were loaded and separated by SDS-PAGE. The blot was incubated with anti-Histone deacetylase 2 antibody (Cat#1258, 1:5,000) and HRP-conjugated goat anti-rabbit secondary antibody (Cat#201, 1:20,000) respectively. Image was developed using FeQ™ ECL Substrate Kit (Cat#226).

### SUPPORT

SUPPORT@GENUINBIOTECH.COM  
TEL: +1-540-855-7041

### ORDERS

SALES@GENUINBIOTECH.COM  
FAX: +1-540-855-7041

WWW.GENUINBIOTECH.COM