

# Anti-Homeodomain interacting protein kinase 2 Recombinant Rabbit Monoclonal Antibody



**Catalog #: 1263**

## Aliases

HIPK2; Homeodomain Interacting Protein Kinase 2; Homeodomain-Interacting Protein Kinase 2;  
EC 2.7.11.1; HHIPk2; PRO0593

## Background

Gene Name: HIPK2

NCBI Gene Entry: [28996](#)

UniProt Entry: [Q9H2X6](#)

## Application Information

Molecular Weight: Predicted, 131 kDa; observed, 100,130 kDa

Clonality: Rabbit monoclonal antibody

Clone ID: 23GB2500

Species Reactivity: Human

Applications Tested: Western blotting (WB), immunocytochemistry (IC)

## Immunogen

A synthesized peptide derived from human HIPK2

## Isotype

Rabbit IgG

## Storage Buffer

Supplied in PBS (pH 7.4) containing 50% glycerol, and 0.02% sodium azide.

## Storage

Store at -20 °C for one year.

## Recommended Dilutions

Western Blotting (WB): 1:1,000-1:5,000

Immunocytochemistry (IC): 1:100-1:1,000

**Note:** This product is for research use only.

## Validation Data

---

### SUPPORT

SUPPORT@GENUINBIOTECH.COM  
TEL: +1-540-855-7041

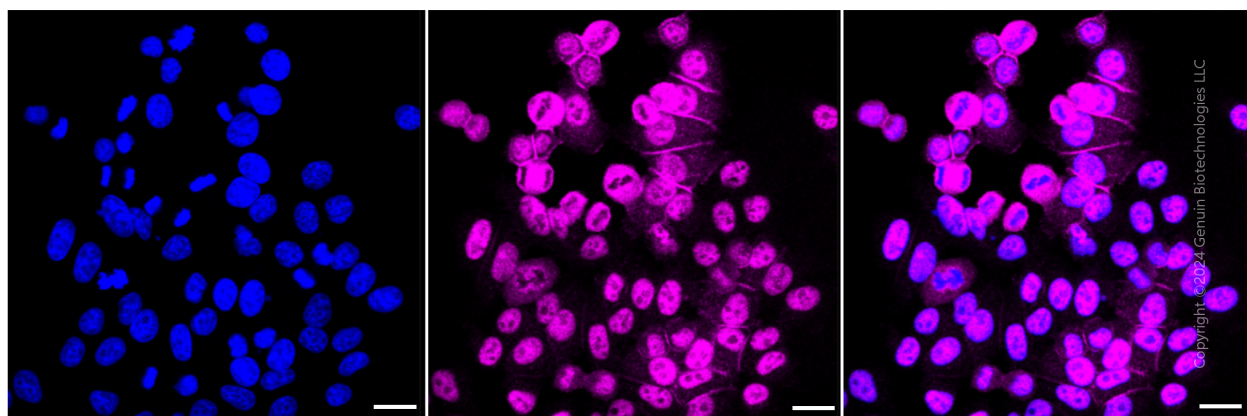
### ORDERS

SALES@GENUINBIOTECH.COM  
FAX: +1-540-855-7041

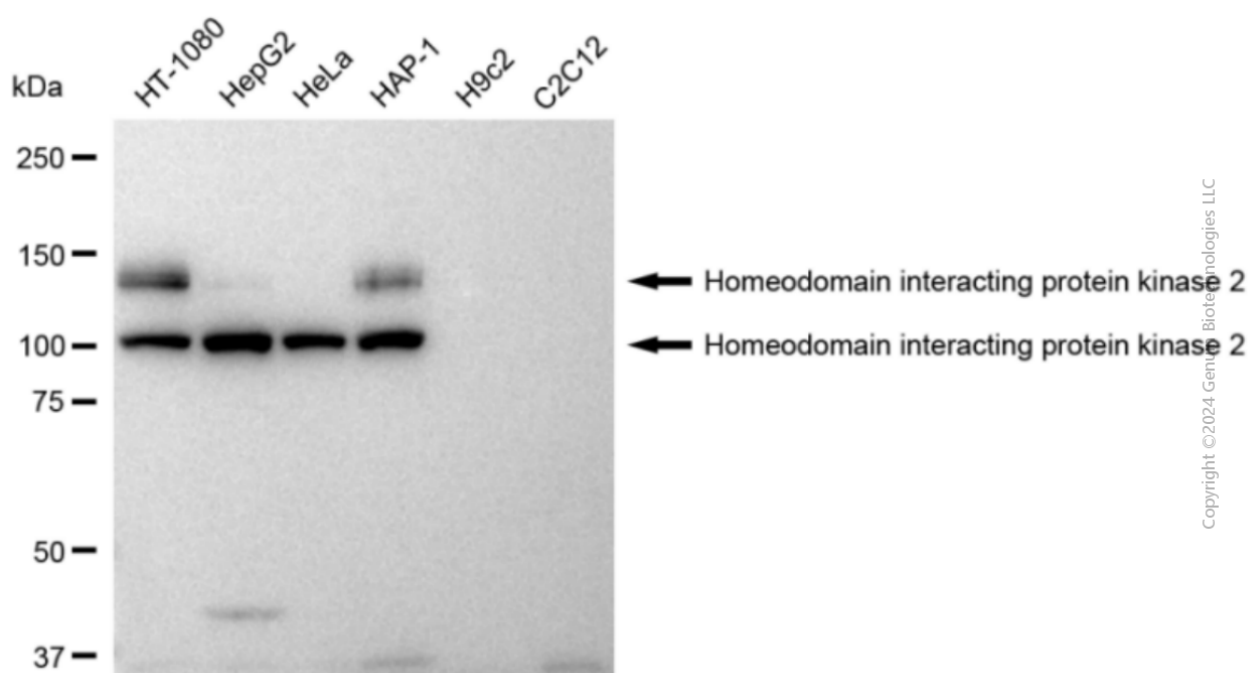
[WWW.GENUINBIOTECH.COM](http://WWW.GENUINBIOTECH.COM)

## Anti-Homeodomain interacting protein kinase 2 Recombinant Rabbit Monoclonal Antibody

PAGE 2



Immunocytochemical staining of HepG2 cells with Homeodomain interacting protein kinase 2 antibody (Cat#1263, 1:1,000). Nuclei were stained blue with DAPI; Homeodomain interacting protein kinase 2 was stained magenta with Alexa Fluor® 647. Images were taken using Leica stellaris 5. Protein abundance based on laser Intensity and smart gain: High. Scale bar: 20  $\mu$ m.



Western blotting analysis using anti-Homeodomain interacting protein kinase 2 antibody (Cat#1263). Total cell lysates (30  $\mu$ g) from various cell lines were loaded and separated by SDS-PAGE. The blot was incubated with anti-Homeodomain interacting protein kinase 2 antibody (Cat#1263, 1:5,000) and HRP-conjugated goat anti-rabbit secondary antibody (Cat#201, 1:20,000) respectively. Image was developed using FeQ™ ECL Substrate Kit (Cat#226).

### SUPPORT

SUPPORT@GENUINBIOTECH.COM  
TEL: +1-540-855-7041

### ORDERS

SALES@GENUINBIOTECH.COM  
FAX: +1-540-855-7041

WWW.GENUINBIOTECH.COM