

# Anti-INPP4B Recombinant Rabbit Monoclonal Antibody



**Catalog #: 1265**

## Aliases

INPP4B; Inositol Polyphosphate-4-Phosphatase Type II B; Inositol Polyphosphate-4-Phosphatase, Type II, 105kDa; Type II Inositol 3,4-Bisphosphate 4-Phosphatase; Inositol Polyphosphate 4-Phosphatase Type II; EC 3.1.3.66; Inositol Polyphosphate 4-Phosphatase II; 4-Phosphatase II; Inositol Polyphosphate-4-Phosphatase, Type II, 105kD

## Background

Gene Name: INPP4B

NCBI Gene Entry: [8821](#)

UniProt Entry: [O15327](#)

## Application Information

Molecular Weight: Predicted, 105 kDa; observed, 107 kDa

Clonality: Rabbit monoclonal antibody

Clone ID: 23GB2530

Species Reactivity: Human, mouse, rat

Applications Tested: Western blotting (WB), immunocytochemistry (IC)

## Immunogen

A synthesized peptide derived from human INPP4B

## Isotype

Rabbit IgG

## Storage Buffer

Supplied in PBS (pH 7.4) containing 50% glycerol, and 0.02% sodium azide.

## Storage

Store at -20 °C for one year.

## Recommended Dilutions

Western Blotting (WB): 1:1,000-1:5,000

Immunocytochemistry (IC): 1:100-1:1,000

**Note:** This product is for research use only.

---

### SUPPORT

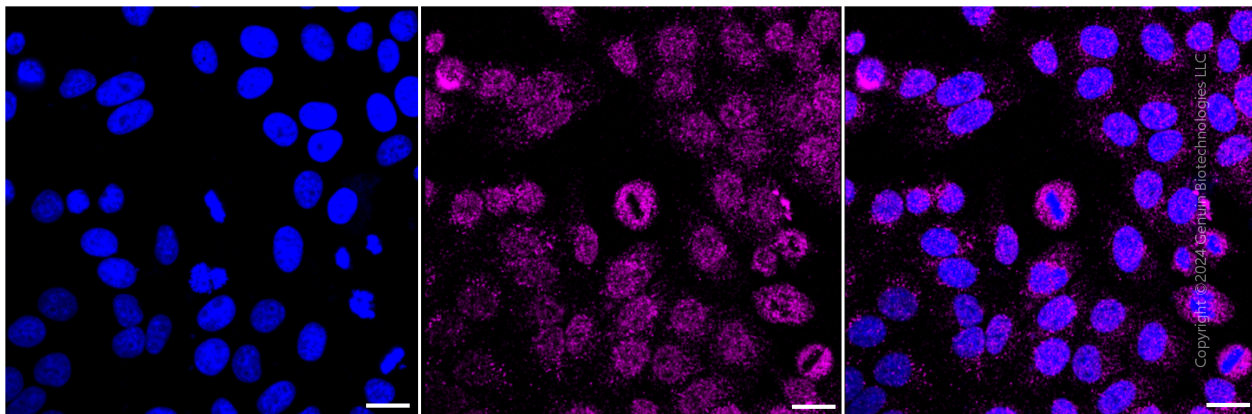
SUPPORT@GENUINBIOTECH.COM  
TEL: +1-540-855-7041

### ORDERS

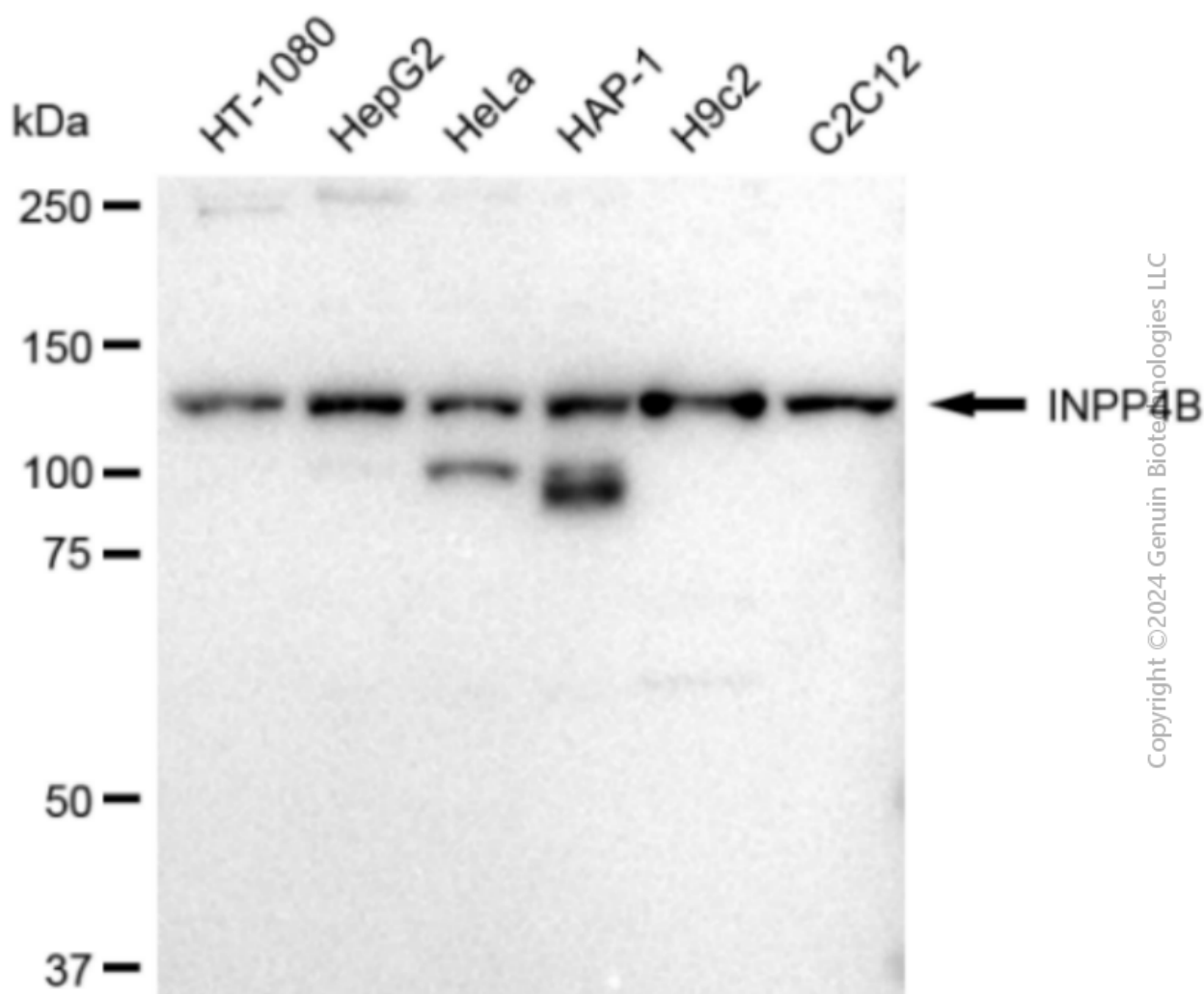
SALES@GENUINBIOTECH.COM  
FAX: +1-540-855-7041

[WWW.GENUINBIOTECH.COM](http://WWW.GENUINBIOTECH.COM)

## Validation Data



Immunocytochemical staining of HepG2 cells with INPP4B antibody (Cat#1265, 1:1,000). Nuclei were stained blue with DAPI; INPP4B was stained magenta with Alexa Fluor® 647. Images were taken using Leica stellaris 5. Protein abundance based on laser Intensity and smart gain: Medium. Scale bar: 20  $\mu$ m.



Western blotting analysis using anti-INPP4B antibody (Cat#1265). Total cell lysates (30  $\mu$ g) from various cell lines were loaded and separated by SDS-PAGE. The blot was incubated with anti-INPP4B antibody (Cat#1265, 1:5,000) and HRP-conjugated goat anti-rabbit secondary antibody (Cat#201, 1:20,000) respectively. Image was developed using FeQ™ ECL Substrate Kit (Cat#226). INPP4B, inositol polyphosphate-4-phosphatase type II B.