

# Anti-NALP3 Recombinant Rabbit Monoclonal Antibody



**Catalog #: 1274**

## Aliases

NLRP3; NLR Family Pyrin Domain Containing 3; PYPAF1; CLR1.1; NALP3; Cryopyrin; AGTAVPRL; CIAS1; FCAS; AII; AVP; FCU; MWS; Nucleotide-Binding Oligomerization Domain, Leucine Rich Repeat And Pyrin Domain Containing 3; Cold-Induced Autoinflammatory Syndrome 1 Protein; NACHT, LRR And PYD Domains-Containing Protein 3; PYRIN-Containing APAF1-Like Protein 1; Deafness, Autosomal Dominant 34; Caterpillar Protein 1.1; C1orf7; DFNA34; NACHT Domain-, Leucine-Rich Repeat-, And PYD-Containing Protein 3; Cryopyrin, NACHT, LRR And PYD Domains - Containing Protein 3; Angiotensin/Vasopressin Receptor AII/AVP-Like; Cold Autoinflammatory Syndrome 1 Protein; NACHT, LRR And PYD Containing Protein 3; Cold Autoinflammatory Syndrome 1; EC 3.6.4.-; C1ORF7; FCAS1; KEFH

## Background

Gene Name: NLRP3

NCBI Gene Entry: [114548](#)

UniProt Entry: [Q96P20](#)

## Application Information

Molecular Weight: Predicted, 118 kDa; observed, 118 kDa

Clonality: Rabbit monoclonal antibody

Clone ID: 23GB2540

Species Reactivity: Human

Applications Tested: Western blotting (WB), flow cytometry (FCM), immunocytochemistry (IC)

## Immunogen

A synthesized peptide derived from human NALP3

## Isotype

Rabbit IgG

## Storage Buffer

Supplied in PBS (pH 7.4) containing 50% glycerol, and 0.02% sodium azide.

## Storage

Store at -20 °C for one year.

## Recommended Dilutions

---

### SUPPORT

SUPPORT@GENUINBIOTECH.COM  
TEL: +1-540-855-7041

### ORDERS

SALES@GENUINBIOTECH.COM  
FAX: +1-540-855-7041

[WWW.GENUINBIOTECH.COM](http://WWW.GENUINBIOTECH.COM)

## Anti-NALP3 Recombinant Rabbit Monoclonal Antibody

PAGE 2

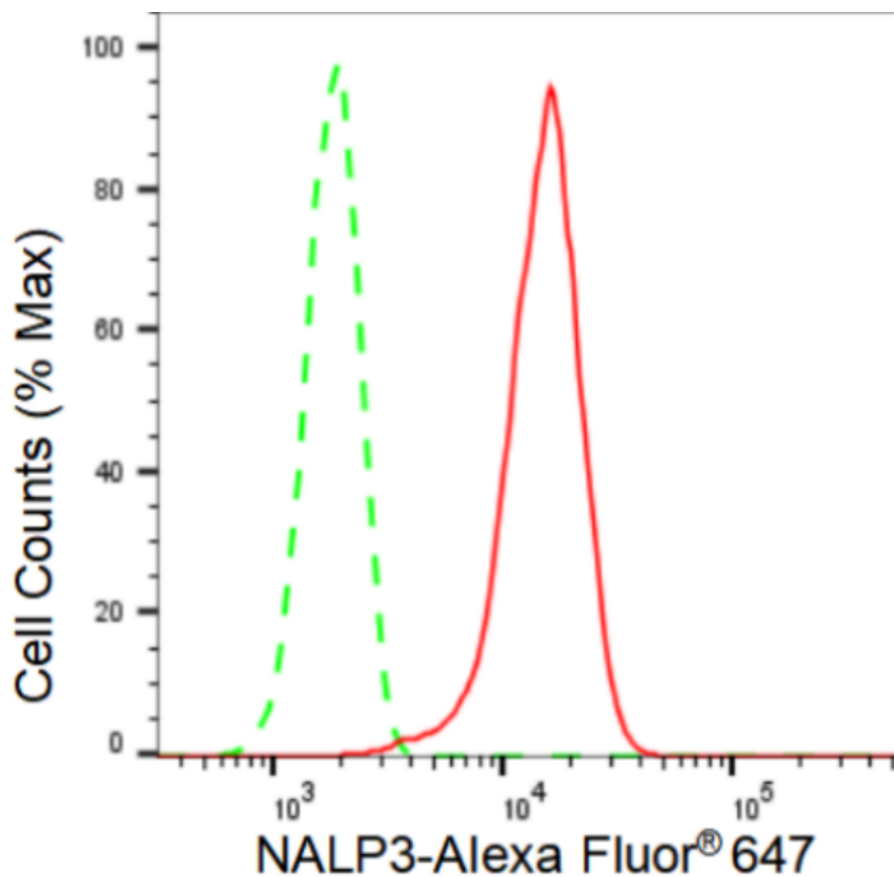
Western Blotting (WB): 1:1,000-1:5,000

Flow Cytometry (FCM): 1:2,000

Immunocytochemistry (IC): 1:100-1:1,000

**Note:** This product is for research use only.

### Validation Data



Copyright ©2024 Genuin Biotechnologies LLC

Flow cytometric analysis of NALP3 expression in HT-1080 cells using NALP3 antibody (Cat#1274, 1:2,000). Green, isotype control; red, NALP3.

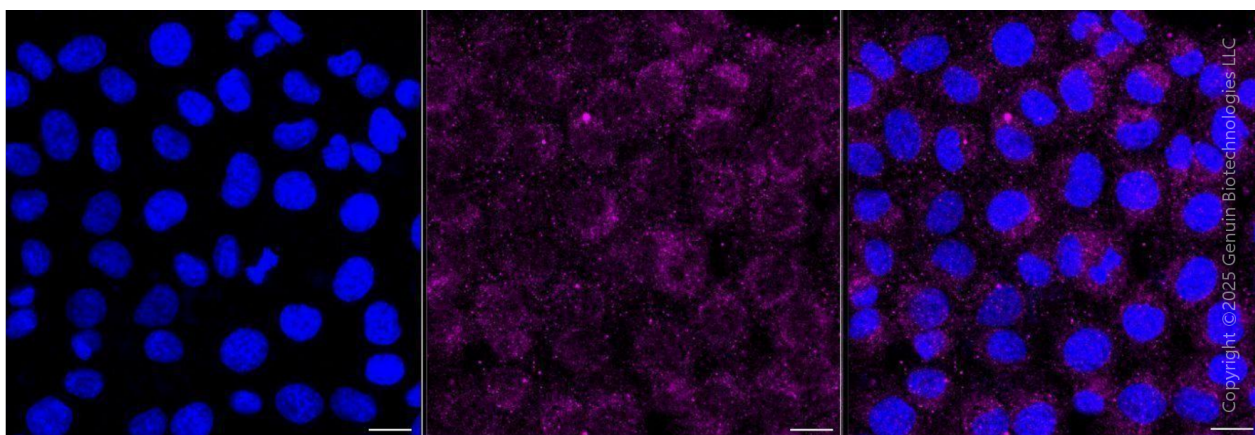
#### SUPPORT

SUPPORT@GENUINBIOTECH.COM  
TEL: +1-540-855-7041

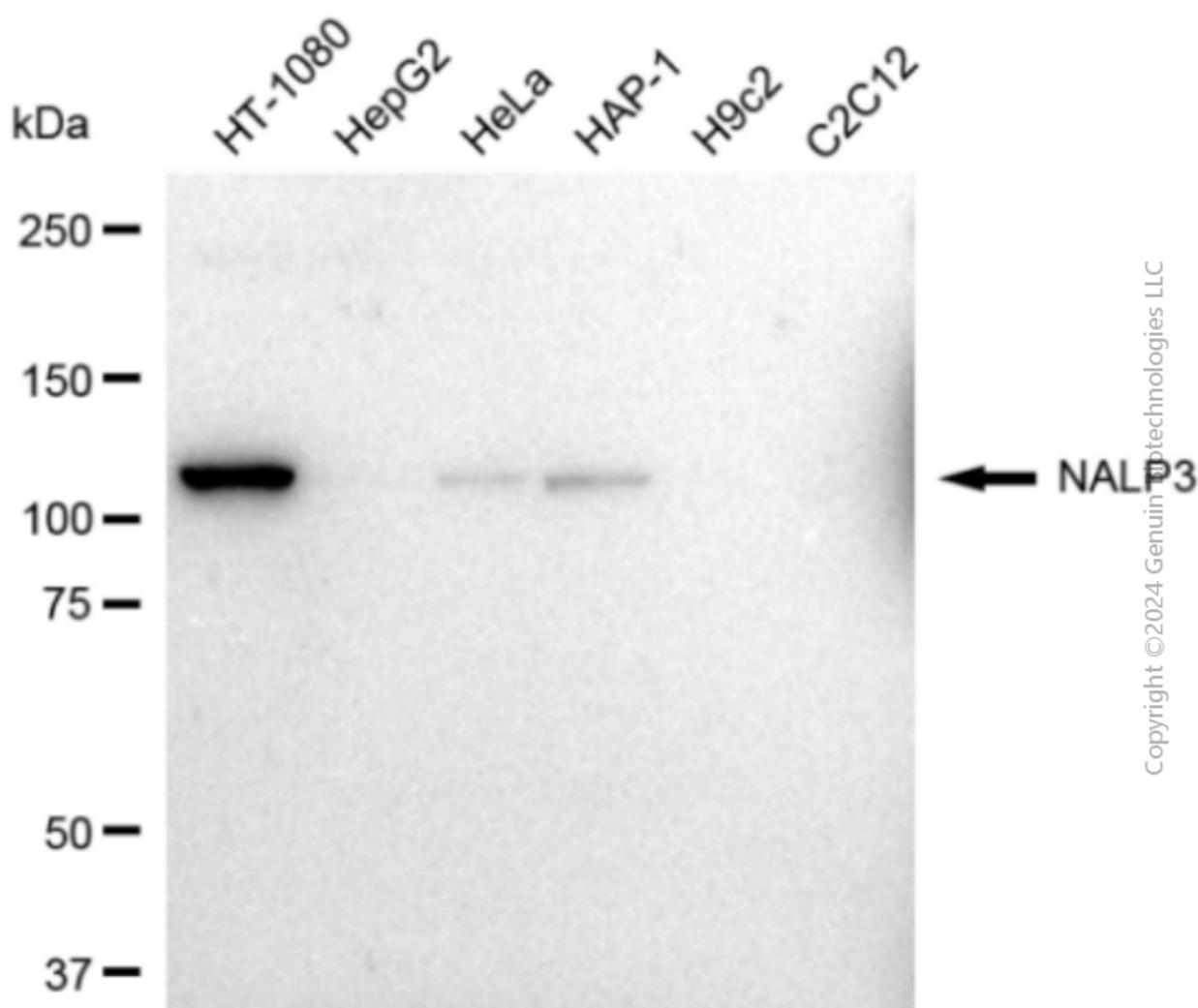
#### ORDERS

SALES@GENUINBIOTECH.COM  
FAX: +1-540-855-7041

[WWW.GENUINBIOTECH.COM](http://WWW.GENUINBIOTECH.COM)



Immunocytochemical staining of HT-1080 cells with anti-NALP3 antibody (Cat#1274, 1:1,000) . Nuclei were stained blue with DAPI; NALP3 was stained magenta with Alexa Fluor® 647. Images were taken using Leica stellaris 5. Protein abundance based on laser Intensity and smart gain: Medium. Scale bar, 20  $\mu$ m.



## **Anti-NALP3 Recombinant Rabbit Monoclonal Antibody**

PAGE 4

Western blotting analysis using anti-NALP3 antibody (Cat#1274). Total cell lysates (30 µg) from various cell lines were loaded and separated by SDS-PAGE. The blot was incubated with anti-NALP3 antibody (Cat#1274, 1:5,000) and HRP-conjugated goat anti-rabbit secondary antibody (Cat#201, 1:20,000) respectively. Image was developed using FeQ™ ECL Substrate Kit (Cat#226).

---

### **SUPPORT**

SUPPORT@GENUINBIOTECH.COM  
TEL: +1-540-855-7041

### **ORDERS**

SALES@GENUINBIOTECH.COM  
FAX: +1-540-855-7041

**WWW.GENUINBIOTECH.COM**