

# Anti-PTEN Recombinant Rabbit Monoclonal Antibody



**Catalog #: 1277**

## Aliases

Phosphatase And Tensin Homolog; MMAC1; TEP1; Mutated In Multiple Advanced Cancers 1; PTEN1; Phosphatidylinositol 3,4,5-Trisphosphate 3-Phosphatase And Dual-Specificity Protein Phosphatase PTEN; MHAM; BZS; Phosphatidylinositol-3,4,5-Trisphosphate 3-Phosphatase And Dual-Specificity Protein Phosphatase PTEN; MMAC1 Phosphatase And Tensin Homolog Deleted On Chromosome 10; Mitochondrial Phosphatase And Tensin Protein Alpha; Phosphatase And Tensin-Like Protein; PTEN Variant PTEN-R234Afs\*11; Protein Tyrosine Phosphatase; PTEN Variant PTEN-K267Rfs\*9; PTEN Variant PTEN-L247\*; Mitochondrial PTENalpha; PTENepsilon; EC 3.1.3.16; EC 3.1.3.48; EC 3.1.3.67; 10q23del; PTENbeta; CWS1; GLM2; DEC;

## Background

Gene Name: PTEN

NCBI Gene Entry: [5728](#)

UniProt Entry: [P60484](#)

## Application Information

Molecular Weight: Predicted, 47 kDa; observed, 54 kDa

Clonality: Rabbit monoclonal antibody

Clone ID: 23GB2880

Species Reactivity: Human, mouse, rat

Applications Tested: Western blotting (WB), flow cytometry (FCM), immunocytochemistry (IC)

## Immunogen

A synthesized peptide derived from human PTEN

## Isotype

Rabbit IgG

## Storage Buffer

Supplied in PBS (pH 7.4) containing 50% glycerol, and 0.02% sodium azide.

## Storage

Store at -20 °C for one year.

## Recommended Dilutions

Western Blotting (WB): 1:1,000-1:5,000

---

### SUPPORT

SUPPORT@GENUINBIOTECH.COM  
TEL: +1-540-855-7041

### ORDERS

SALES@GENUINBIOTECH.COM  
FAX: +1-540-855-7041

[WWW.GENUINBIOTECH.COM](http://WWW.GENUINBIOTECH.COM)

# Anti-PTEN Recombinant Rabbit Monoclonal Antibody

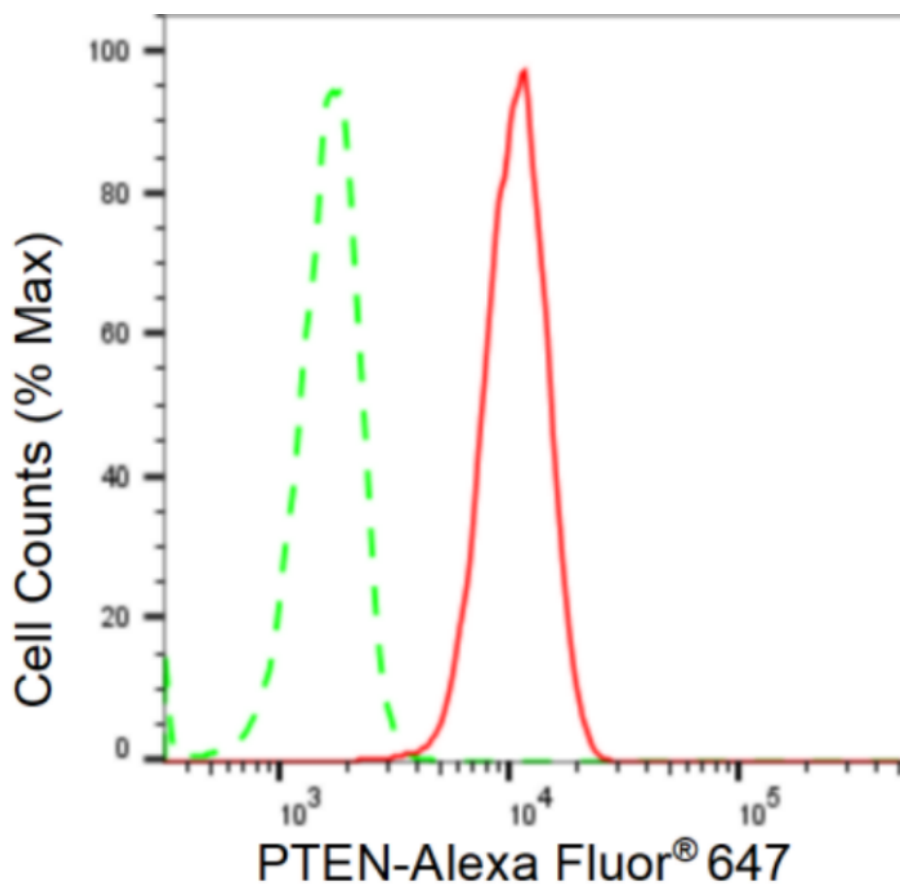
PAGE 2

Flow Cytometry (FCM): 1:2,000

Immunocytochemistry (IC): 1:100-1:1,000

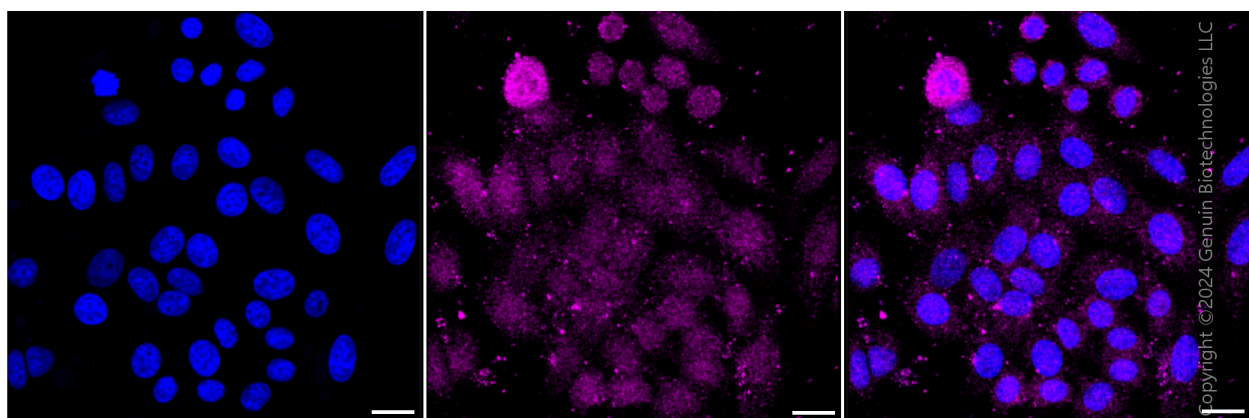
**Note:** This product is for research use only.

## Validation Data



Copyright ©2024 Genuin Biotechnologies LLC

Flow cytometric analysis of PTEN expression in C2C12 cells using PTEN antibody (Cat#1277, 1:2,000). Green, isotype control; red, PTEN.



Copyright ©2024 Genuin Biotechnologies LLC

### SUPPORT

SUPPORT@GENUINBIOTECH.COM  
TEL: +1-540-855-7041

### ORDERS

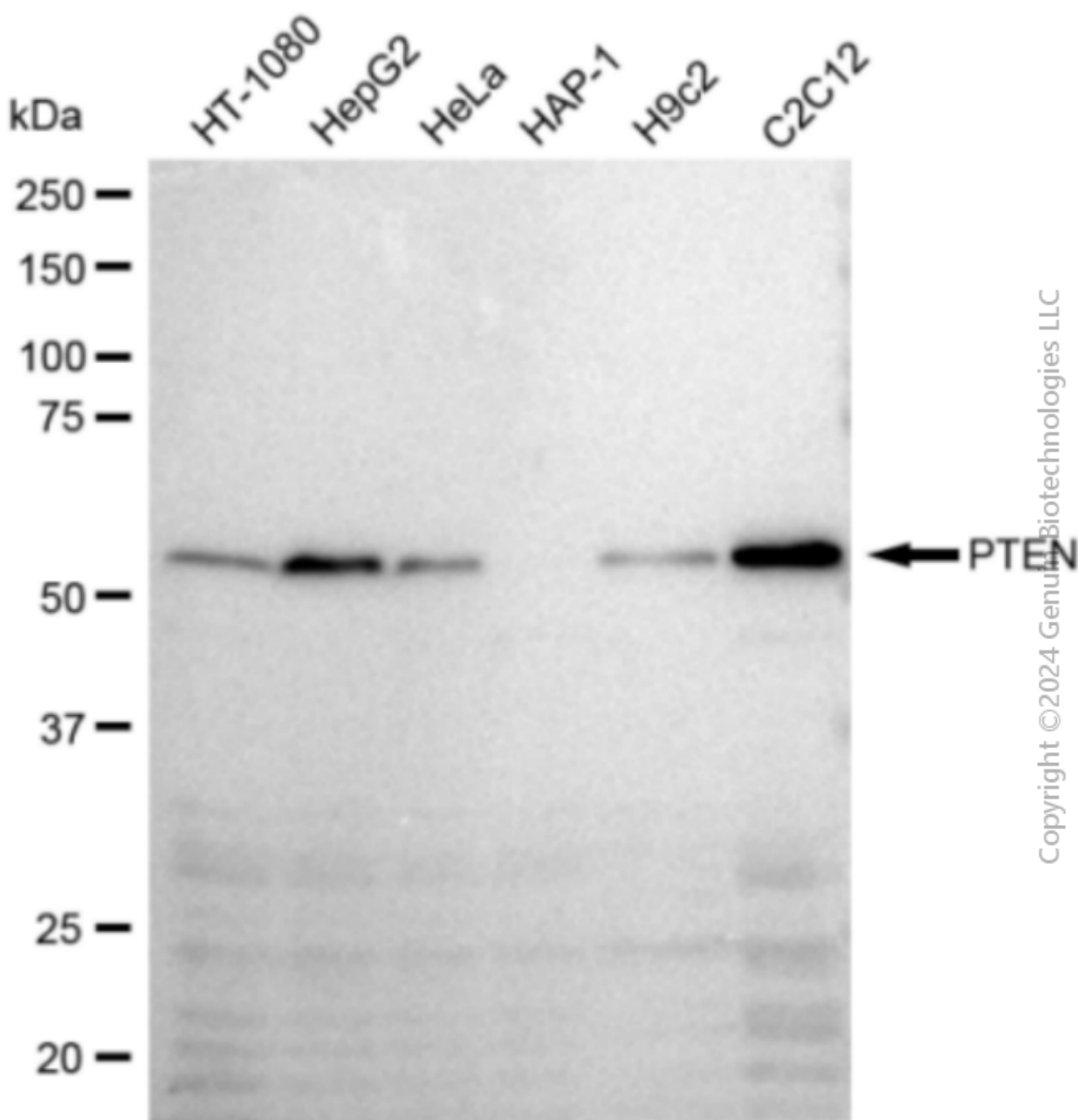
SALES@GENUINBIOTECH.COM  
FAX: +1-540-855-7041

WWW.GENUINBIOTECH.COM

## Anti-PTEN Recombinant Rabbit Monoclonal Antibody

PAGE 3

Immunocytochemical staining of HepG2 cells with anti-PTEN antibody (Cat#1277, 1:1,000). Nuclei were stained blue with DAPI; PTEN was stained magenta with Alexa Fluor® 647. Images were taken using Leica stellaris 5. Protein abundance based on laser Intensity and smart gain: Medium. Scale bar: 20  $\mu$ m.



Western blotting analysis using anti-PTEN antibody (Cat#1277). Total cell lysates (30  $\mu$ g) from various cell lines were loaded and separated by SDS-PAGE. The blot was incubated with anti-PTEN antibody (Cat#1277, 1:5,000) and HRP-conjugated goat anti-rabbit secondary antibody (Cat#201, 1:20,000) respectively. Image was developed using FeQ™ ECL Substrate Kit (Cat#226).

### SUPPORT

SUPPORT@GENUINBIOTECH.COM  
TEL: +1-540-855-7041

### ORDERS

SALES@GENUINBIOTECH.COM  
FAX: +1-540-855-7041

WWW.GENUINBIOTECH.COM

---

**SUPPORT**

SUPPORT@GENUINBIOTECH.COM  
TEL: +1-540-855-7041

**ORDERS**

SALES@GENUINBIOTECH.COM  
FAX:+1-540-855-7041

**WWW.GENUINBIOTECH.COM**