

Anti-CD8 alpha Recombinant Rabbit Monoclonal Antibody



Catalog #: 1280

Aliases

CD8A; CD8 Subunit Alpha ; T-Cell Surface Glycoprotein CD8 Alpha Chain; CD8alpha; P32; T-Lymphocyte Differentiation Antigen T8/Leu-2; CD8 Antigen, Alpha Polypeptide (P32); CD8a Molecule; CD8; Leu2 T-Lymphocyte Antigen; OKT8 T-Cell Antigen; T-Cell Antigen Leu2; T Cell Co-Receptor; T8 T-Cell Antigen; CD8a Antigen; IMD116; Leu2; MAL

Background

Gene Name: CD8A

NCBI Gene Entry: [925](#)

UniProt Entry: [P01732](#)

Application Information

Molecular Weight: Predicted, 26 kDa; observed, 32 kDa

Clonality: Rabbit monoclonal antibody

Clone ID: 23GB1420

Species Reactivity: Human, mouse, rat

Applications Tested: Western blotting (WB), flow cytometry (FCM), immunocytochemistry (IC), immunohistochemistry (IHC)

Immunogen

A synthesized peptide derived from human CD8

Isotype

Rabbit IgG

Storage Buffer

Supplied in PBS (pH 7.4) containing 50% glycerol, and 0.02% sodium azide.

Storage

Store at -20 °C for one year.

Recommended Dilutions

Western Blotting (WB): 1:1,000-1:5,000

Flow Cytometry (FCM): 1:2,000

Immunocytochemistry (IC): 1:100-1:1,000

Immunohistochemistry (IHC): 1:100-1:200

SUPPORT

SUPPORT@GENUINBIOTECH.COM
TEL: +1-540-855-7041

ORDERS

SALES@GENUINBIOTECH.COM
FAX: +1-540-855-7041

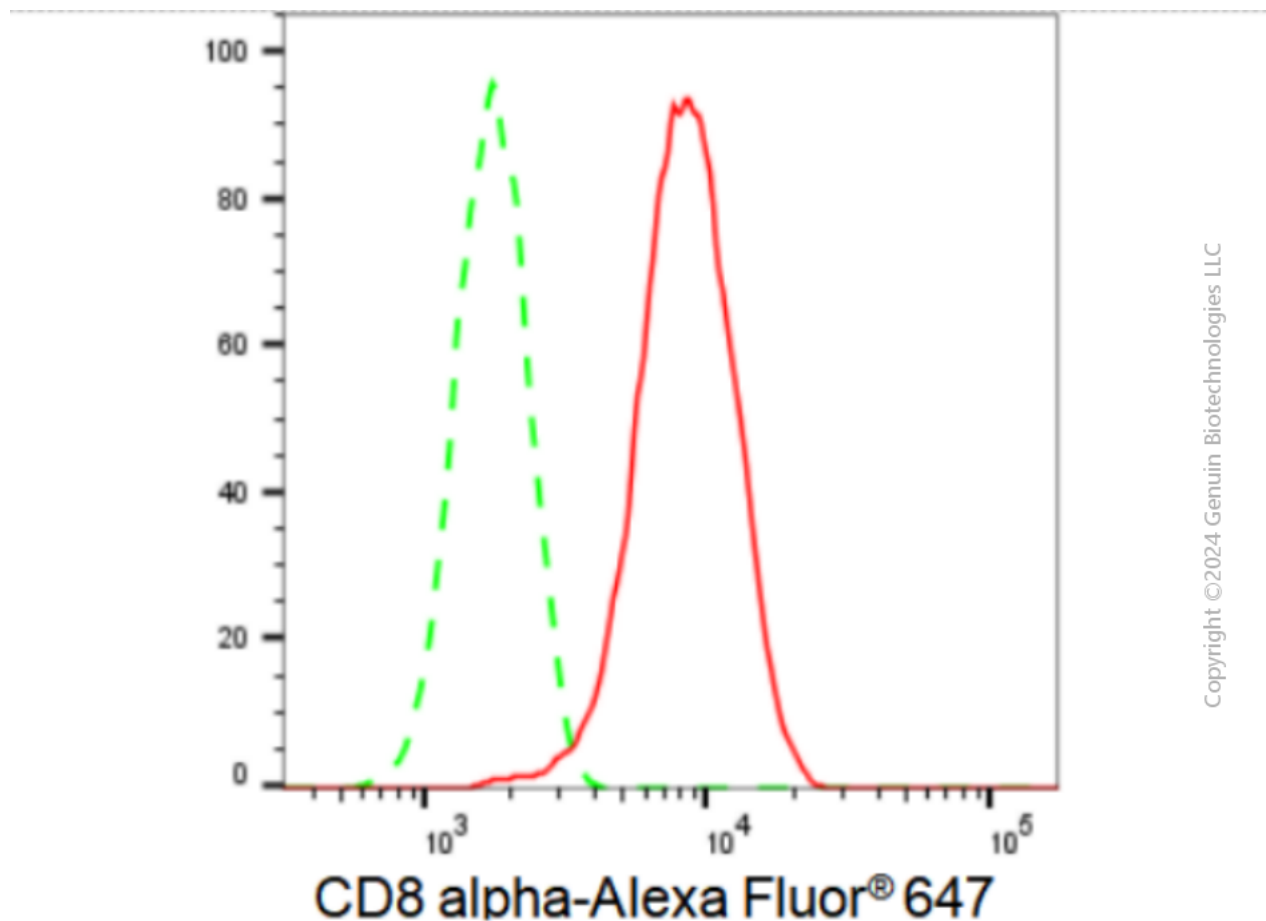
WWW.GENUINBIOTECH.COM

Anti-CD8 alpha Recombinant Rabbit Monoclonal Antibody

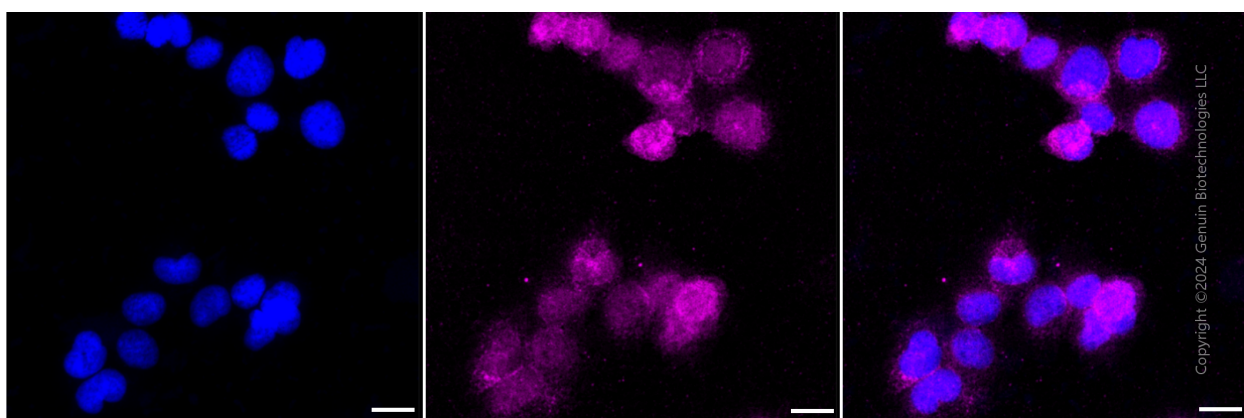
PAGE 2

Note: This product is for research use only.

Validation Data



Flow cytometric analysis of CD8 alpha expression in HT-1080 cells using CD8 alpha antibody (Cat#1280, 1:2,000). Green, isotype control; red, CD8 alpha.



Immunocytochemical staining of HT-1080 cells with CD8 alpha antibody (Cat#1280, 1:1,000). Nuclei were stained blue with DAPI; CD8 alpha was stained magenta with Alexa Fluor® 647.

SUPPORT

SUPPORT@GENUINBIOTECH.COM
TEL: +1-540-855-7041

ORDERS

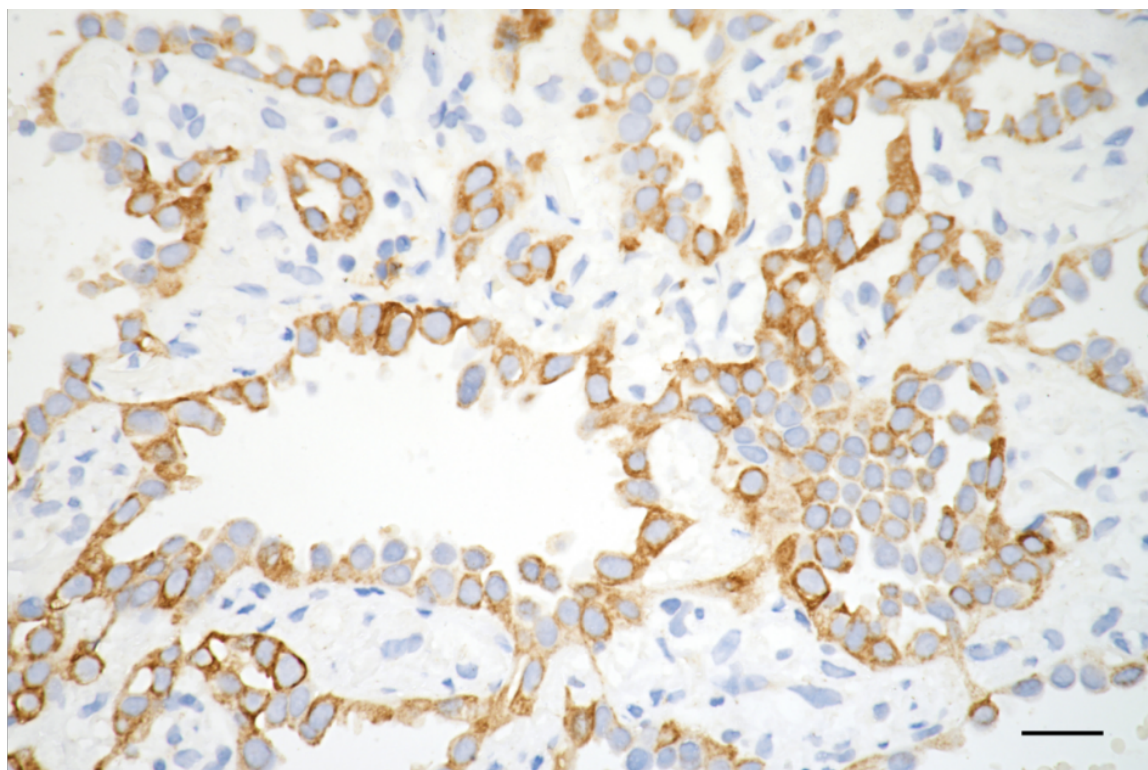
SALES@GENUINBIOTECH.COM
FAX: +1-540-855-7041

WWW.GENUINBIOTECH.COM

Anti-CD8 alpha Recombinant Rabbit Monoclonal Antibody

PAGE 3

Images were taken using Leica stellaris 5. Protein abundance based on laser Intensity and smart gain: Medium. Scale bar: 20 μ m.



Copyright ©2025 Genuin Biotechnologies LLC

Immunohistochemistry was performed on paraffin-embedded human lung adenocarcinoma using anti-CD8 alpha antibody (Cat#1280, 1:200). Antigen retrieval was done in sodium citrate buffer (pH 6.0). DAB was used for detection, with hematoxylin counterstaining. Images were acquired using a Nikon Ci-L Plus microscope (40 \times objective). Scale bar: 25 μ m.

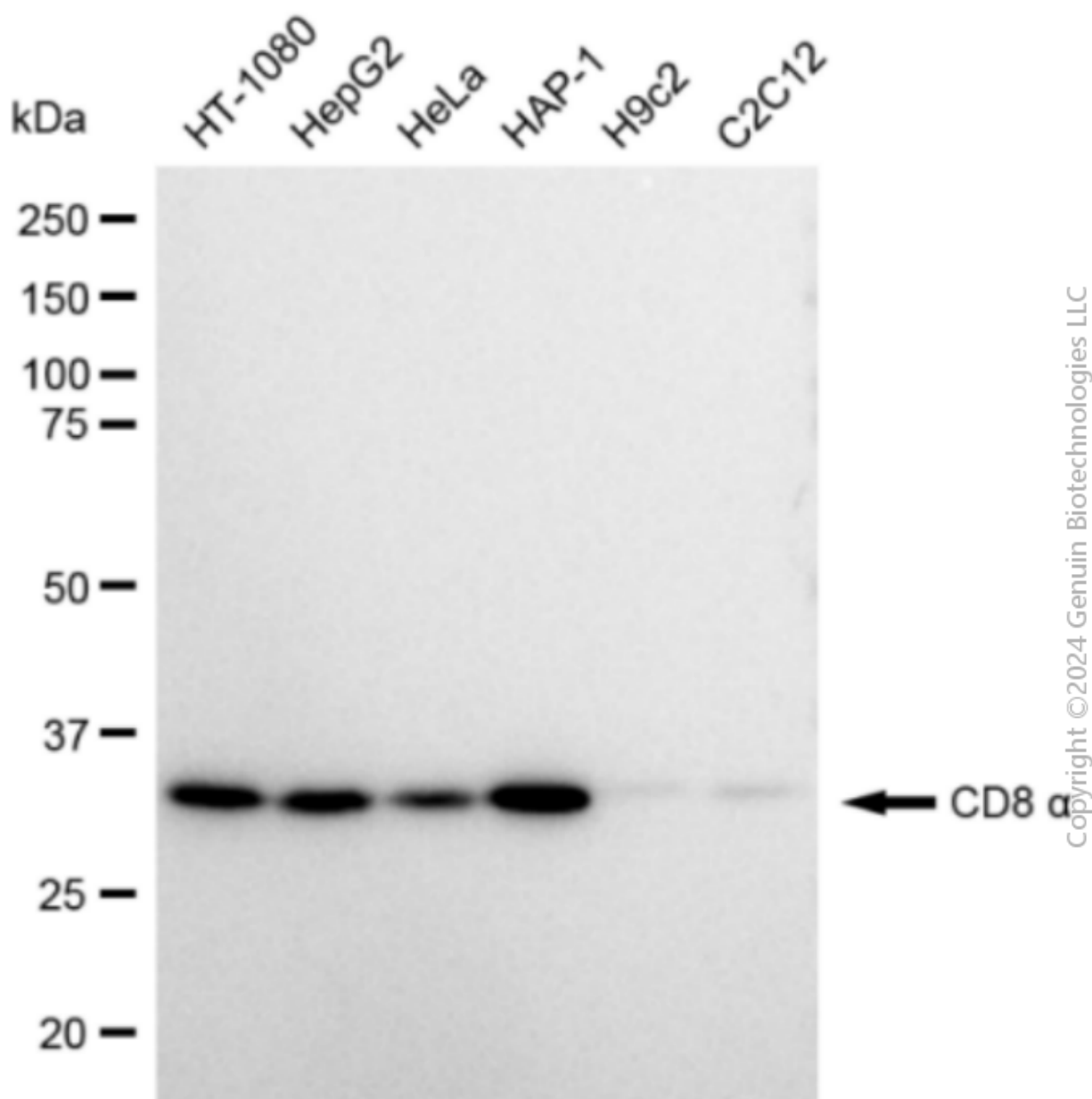
SUPPORT

SUPPORT@GENUINBIOTECH.COM
TEL: +1-540-855-7041

ORDERS

SALES@GENUINBIOTECH.COM
FAX: +1-540-855-7041

WWW.GENUINBIOTECH.COM



Western blotting analysis using anti-CD8 alpha antibody (Cat#1280). Total cell lysates (30 µg) from various cell lines were loaded and separated by SDS-PAGE. The blot was incubated with anti-CD8 alpha antibody (Cat#1280, 1:5,000) and HRP-conjugated goat anti-rabbit secondary antibody (Cat#201, 1:20,000) respectively. Image was developed using FeQ™ ECL Substrate Kit (Cat#226).