

Anti-RASEF Recombinant Rabbit Monoclonal Antibody



Catalog #: 1283

Aliases

RASEF; RAS And EF-Hand Domain Containing; RAB45; TSG; Ras And EF-Hand Domain-Containing Protein; Ras-Related Protein Rab-45; FLJ31614; RAB45, Member RAS Oncogene Family

Background

Gene Name: RASEF

NCBI Gene Entry: [158158](#)

UniProt Entry: [Q8IZ41](#)

Application Information

Molecular Weight: Predicted, 83 kDa; observed, 85 kDa

Clonality: Rabbit monoclonal antibody

Clone ID: 23GB2745

Species Reactivity: Human, mouse, rat

Applications Tested: Western blotting (WB), flow cytometry (FCM), immunocytochemistry (IC)

Immunogen

A synthesized peptide derived from human RAB45

Isotype

Rabbit IgG

Storage Buffer

Supplied in PBS (pH 7.4) containing 50% glycerol, and 0.02% sodium azide.

Storage

Store at -20 °C for one year.

Recommended Dilutions

Western Blotting (WB): 1:1,000-1:5,000

Flow Cytometry (FCM): 1:2,000

Immunocytochemistry (IC): 1:100-1:1,000

Note: This product is for research use only.

SUPPORT

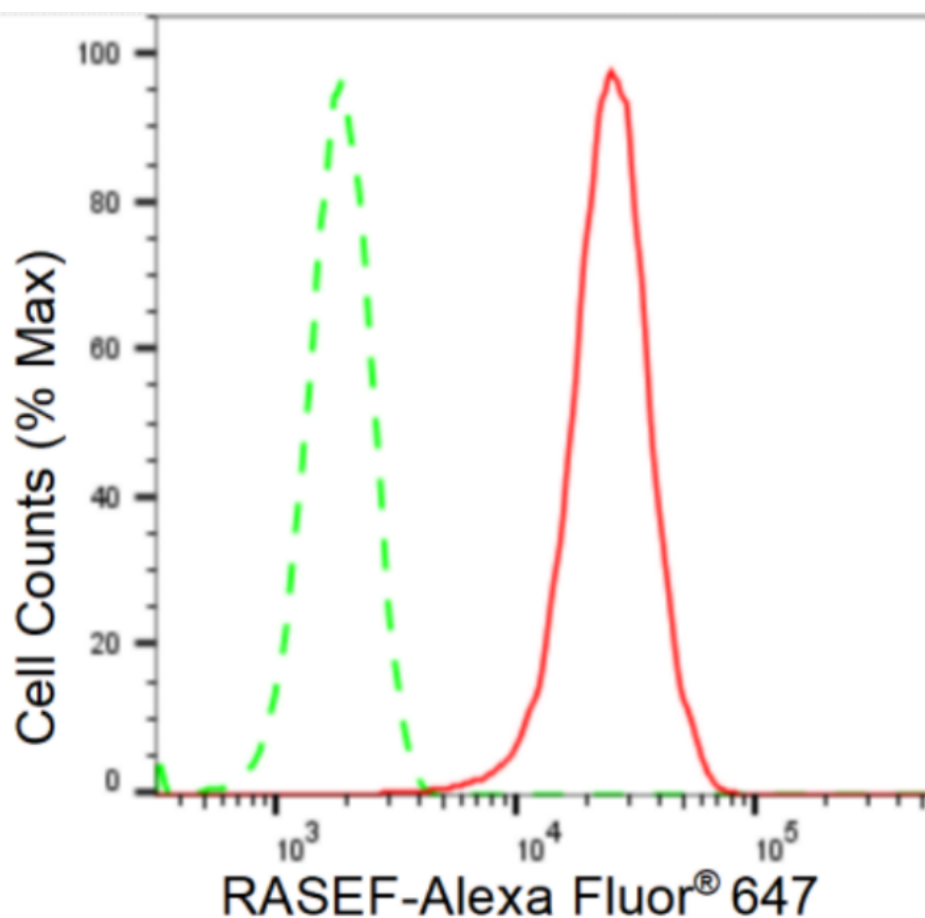
SUPPORT@GENUINBIOTECH.COM
TEL: +1-540-855-7041

ORDERS

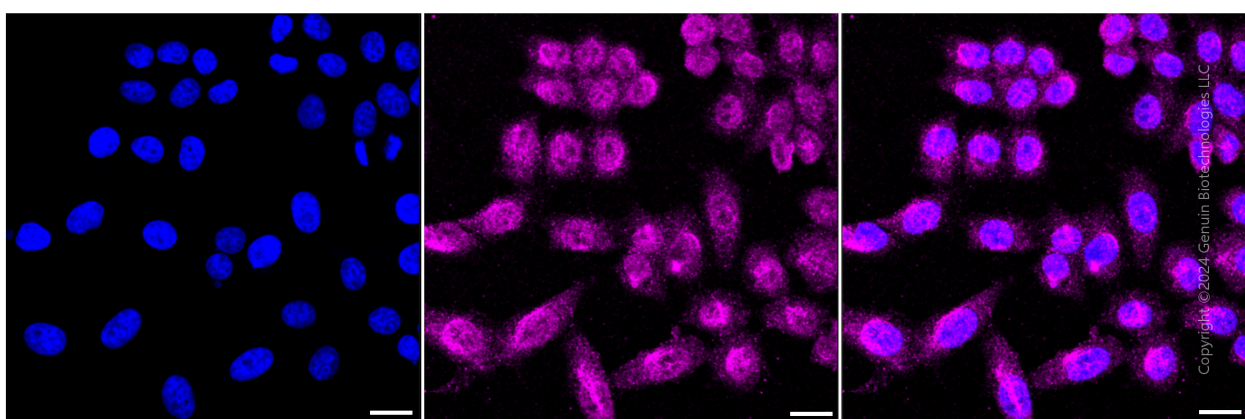
SALES@GENUINBIOTECH.COM
FAX: +1-540-855-7041

WWW.GENUINBIOTECH.COM

Validation Data



Flow cytometric analysis of RASEF expression in HepG2 cells using RASEF antibody (Cat#1283, 1:2,000). Green, isotype control; red, RASEF.



Immunocytochemical staining of HepG2 cells with RASEF antibody (Cat#1283, 1:1,000). Nuclei were stained blue with DAPI; RASEF was stained magenta with Alexa Fluor® 647. Images were taken using Leica stellaris 5. Protein abundance based on laser Intensity and smart gain: Medium. Scale bar: 20 μ m.

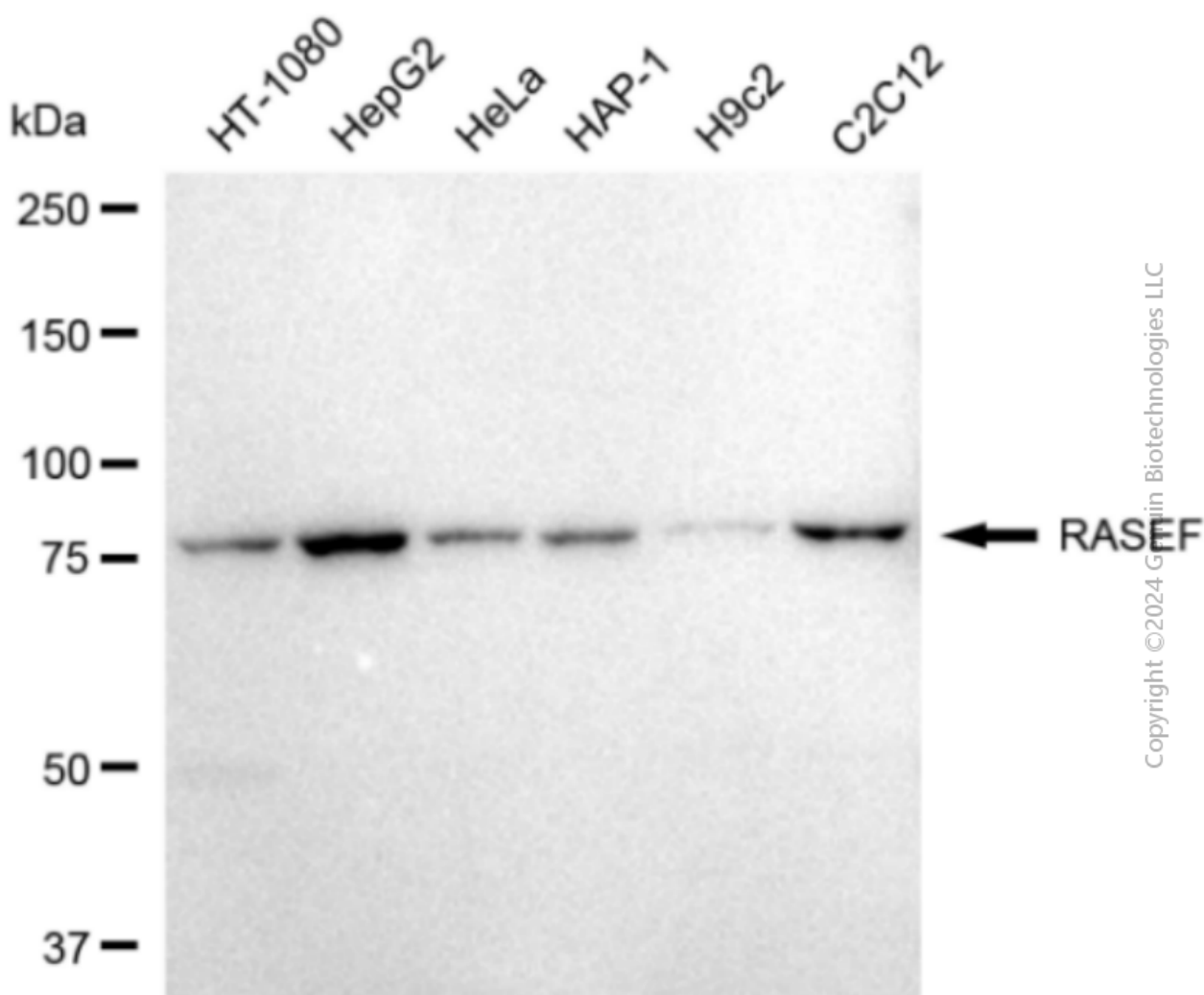
SUPPORT

SUPPORT@GENUINBIOTECH.COM
TEL: +1-540-855-7041

ORDERS

SALES@GENUINBIOTECH.COM
FAX: +1-540-855-7041

WWW.GENUINBIOTECH.COM



Western blotting analysis using anti-RASEF antibody (Cat#1283). Total cell lysates (30 μ g) from various cell lines were loaded and separated by SDS-PAGE. The blot was incubated with anti-RASEF antibody (Cat#1283, 1:5,000) and HRP-conjugated goat anti-rabbit secondary antibody (Cat#201, 1:20,000) respectively. Image was developed using FeQ™ ECL Substrate Kit (Cat#226). RASEF, RAS and EF-hand domain containing.