

Anti-RIPK1 Recombinant Rabbit Monoclonal Antibody



Catalog #: 1284

Aliases

RIPK1; Receptor Interacting Serine/Threonine Kinase 1; RIP-1; RIP1; RIP; Receptor (TNFRSF)-Interacting Serine-Threonine Kinase 1; Receptor-Interacting Serine/Threonine-Protein Kinase 1; Receptor-Interacting Protein Kinase 1; Receptor-Interacting Protein 1; Cell Death Protein RIP; Serine/Threonine-Protein Kinase RIP; EC 2.7.11.1; AIEFL; IMD57

Background

Gene Name: RIPK1

NCBI Gene Entry: [8737](#)

UniProt Entry: [Q13546](#)

Application Information

Molecular Weight: Predicted, 76 kDa; observed, 74 kDa

Clonality: Rabbit monoclonal antibody

Clone ID: 23GB2635

Species Reactivity: Human

Applications Tested: Western blotting (WB), flow cytometry (FCM), immunocytochemistry (IC)

Immunogen

A synthesized peptide derived from human RIP

Isotype

Rabbit IgG

Storage Buffer

Supplied in PBS (pH 7.4) containing 50% glycerol, and 0.02% sodium azide.

Storage

Store at -20 °C for one year.

Recommended Dilutions

Western Blotting (WB): 1:1,000-1:5,000

Flow Cytometry (FCM): 1:2,000

Immunocytochemistry (IC): 1:100-1:1,000

SUPPORT

SUPPORT@GENUINBIOTECH.COM
TEL: +1-540-855-7041

ORDERS

SALES@GENUINBIOTECH.COM
FAX: +1-540-855-7041

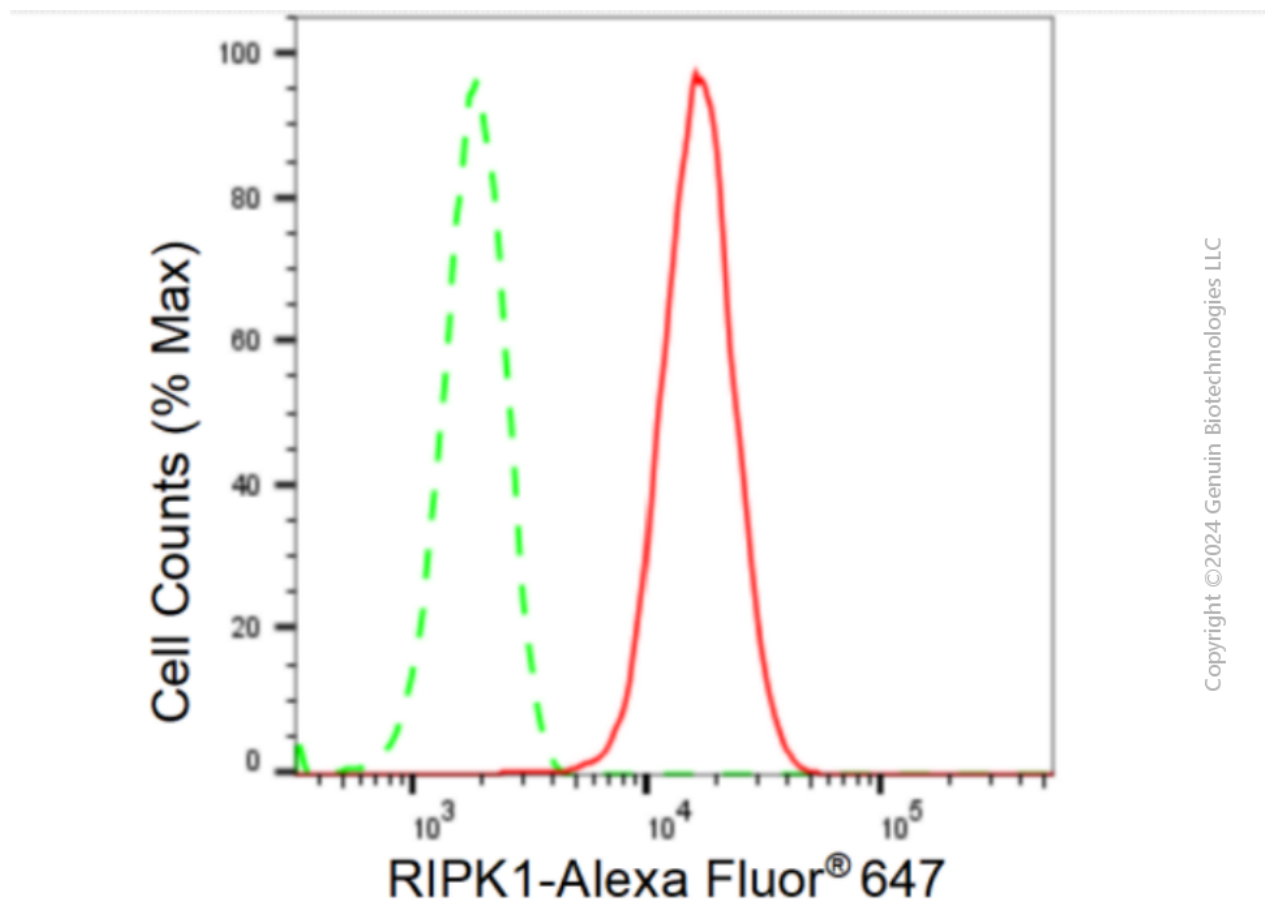
WWW.GENUINBIOTECH.COM

Anti-RIPK1 Recombinant Rabbit Monoclonal Antibody

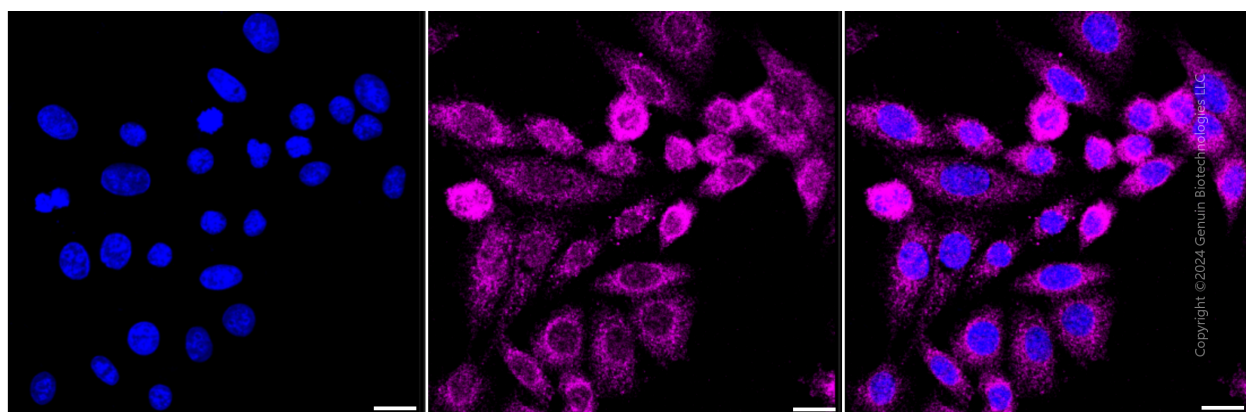
PAGE 2

Note: This product is for research use only.

Validation Data



Flow cytometric analysis of RIPK1 expression in HepG2 cells using RIPK1 antibody (Cat#1284, 1:2,000). Green, isotype control; red, RIPK1.



Immunocytochemical staining of HepG2 cells with anti-RIPK1 antibody (Cat#1284, 1:1,000). Nuclei were stained blue with DAPI; RIPK1 was stained magenta with Alexa Fluor® 647. Images were taken using Leica stellaris 5. Protein abundance based on laser Intensity and smart gain:

SUPPORT

SUPPORT@GENUINBIOTECH.COM
TEL: +1-540-855-7041

ORDERS

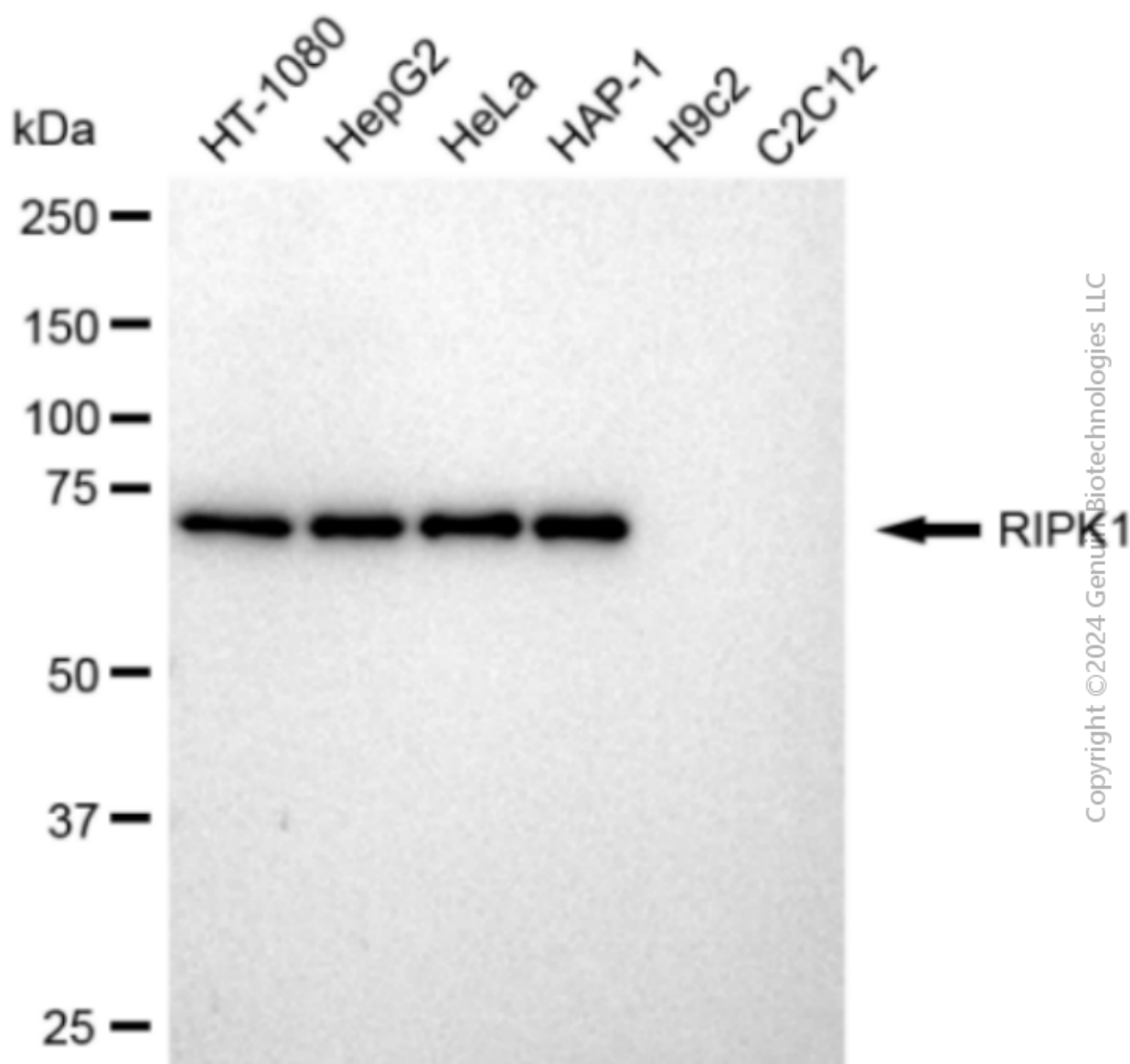
SALES@GENUINBIOTECH.COM
FAX: +1-540-855-7041

WWW.GENUINBIOTECH.COM

Anti-RIPK1 Recombinant Rabbit Monoclonal Antibody

PAGE 3

Medium. Scale bar: 20 μ m.



Western blotting analysis using anti-RIPK1 antibody (Cat#1284). Total cell lysates (30 μ g) from various cell lines were loaded and separated by SDS-PAGE. The blot was incubated with anti-RIPK1 antibody (Cat#1284, 1:5,000) and HRP-conjugated goat anti-rabbit secondary antibody (Cat#201, 1:20,000) respectively. Image was developed using FeQTM ECL Substrate Kit (Cat#226). RIPK1, receptor interacting serine/threonine kinase 1.

SUPPORT

SUPPORT@GENUINBIOTECH.COM
TEL: +1-540-855-7041

ORDERS

SALES@GENUINBIOTECH.COM
FAX: +1-540-855-7041

WWW.GENUINBIOTECH.COM