

Anti-PARP Recombinant Rabbit Monoclonal Antibody



Catalog #: 1289

Aliases

PARP1; Poly(ADP-Ribose) Polymerase 1; ARTD1; ADPRT; PARP; PARS; PPOL; ADP-Ribosyltransferase (NAD⁺; Poly (ADP-Ribose) Polymerase); ADP-Ribosyltransferase Diphtheria Toxin-Like 1; Poly (ADP-Ribose) Polymerase Family, Member 1; Protein Poly-ADP-Ribosyltransferase PARP1; DNA ADP-Ribosyltransferase PARP1; NAD(+) ADP-Ribosyltransferase 1; Poly [ADP-Ribose] Polymerase 1; Poly[ADP-Ribose] Synthase 1; EC 2.4.2.30; Poly-PARP; ADPRT 1; PARP-1; ADP-Ribosyltransferase NAD(+); Poly(ADP-Ribosyl)Transferase; Poly(ADP-Ribose) Synthetase; EC 2.4.2.-; POLY-PARP; PADPRT-1; EC 2.4.2; ADPRT1

Background

Gene Name: PARP1

NCBI Gene Entry: [142](#)

UniProt Entry: [P09874](#)

Application Information

Molecular Weight: Predicted, 113 kDa; observed, 113 kDa

Clonality: Rabbit monoclonal antibody

Clone ID: 23GB2545

Species Reactivity: Human, mouse, rat

Applications Tested: Western blotting (WB), flow cytometry (FCM), immunocytochemistry (IC)

Immunogen

A synthesized peptide derived from human PARP

Isotype

Rabbit IgG

Storage Buffer

Supplied in PBS (pH 7.4) containing 50% glycerol, and 0.02% sodium azide.

Storage

Store at -20 °C for one year.

Recommended Dilutions

Western Blotting (WB): 1:1,000-1:5,000

SUPPORT

SUPPORT@GENUINBIOTECH.COM
TEL: +1-540-855-7041

ORDERS

SALES@GENUINBIOTECH.COM
FAX: +1-540-855-7041

WWW.GENUINBIOTECH.COM

Anti-PARP Recombinant Rabbit Monoclonal Antibody

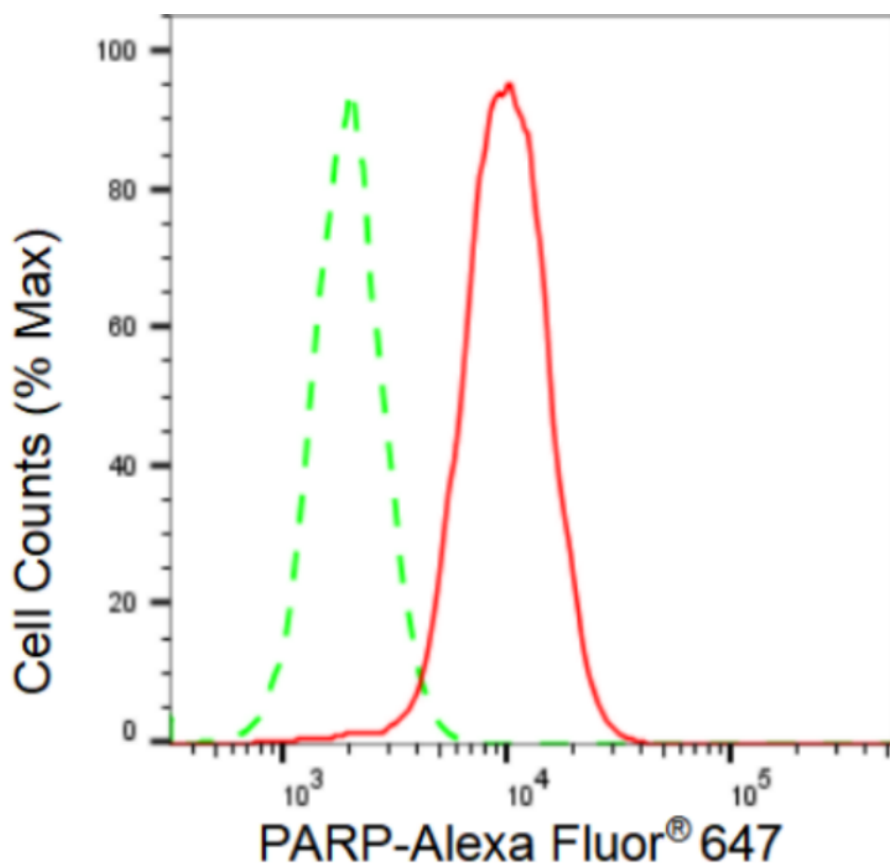
PAGE 2

Flow Cytometry (FCM): 1:2,000

Immunocytochemistry (IC): 1:100-1:1,000

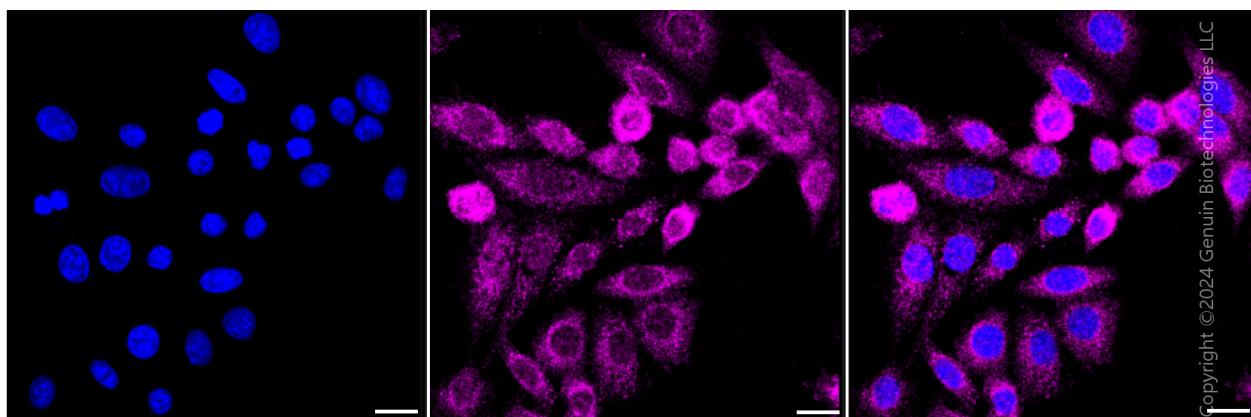
Note: This product is for research use only.

Validation Data



Copyright ©2024 Genuin Biotechnologies LLC

Flow cytometric analysis of PARP expression in HAP-1 cells using PARP antibody (Cat#1289, 1:2,000). Green, isotype control; red, PARP.



Immunocytochemical staining of HAP-1 cells with PARP antibody (Cat#1289, 1:1,000). Nuclei

SUPPORT

SUPPORT@GENUINBIOTECH.COM
TEL: +1-540-855-7041

ORDERS

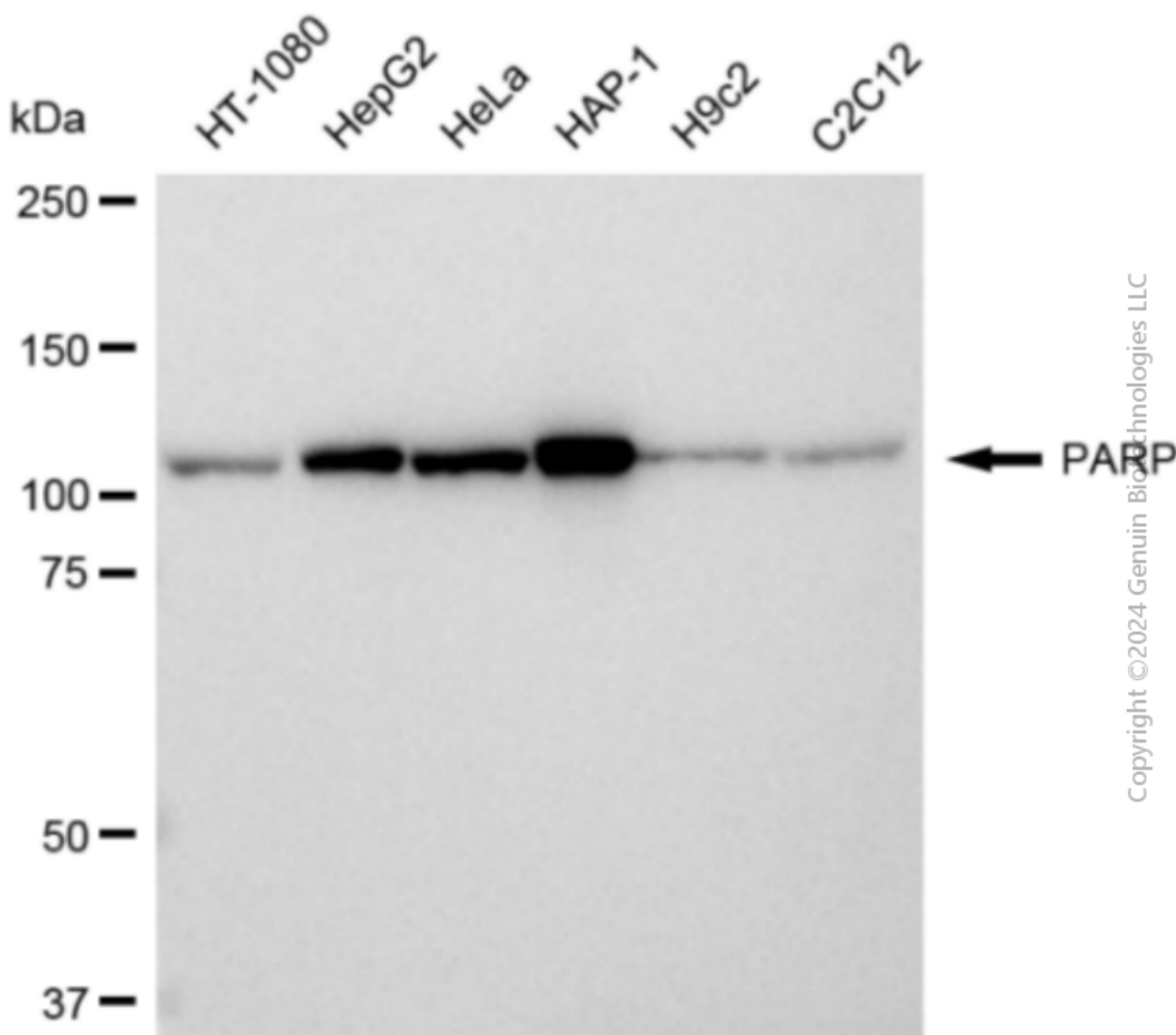
SALES@GENUINBIOTECH.COM
FAX: +1-540-855-7041

WWW.GENUINBIOTECH.COM

Anti-PARP Recombinant Rabbit Monoclonal Antibody

PAGE 3

were stained blue with DAPI; PARP was stained magenta with Alexa Fluor® 647. Images were taken using Leica stellaris 5. Protein abundance based on laser Intensity and smart gain: High. Scale bar: 20 μ m.



Western blotting analysis using anti-PARP antibody (Cat#1289). Total cell lysates (30 μ g) from various cell lines were loaded and separated by SDS-PAGE. The blot was incubated with anti-PARP antibody (Cat#1289, 1:5,000) and HRP-conjugated goat anti-rabbit secondary antibody (Cat#201, 1:20,000) respectively. Image was developed using FeQ™ ECL Substrate Kit (Cat#226).

SUPPORT

SUPPORT@GENUINBIOTECH.COM
TEL: +1-540-855-7041

ORDERS

SALES@GENUINBIOTECH.COM
FAX: +1-540-855-7041

WWW.GENUINBIOTECH.COM