

# Anti-IKBKE Recombinant Rabbit Monoclonal Antibody



**Catalog #: 1294**

## Aliases

IKBKE; Inhibitor Of Nuclear Factor Kappa B Kinase Subunit Epsilon; IKK-I; IKKE; KIAA0151; Inhibitor Of Kappa Light Polypeptide Gene Enhancer In B-Cells, Kinase Epsilon; Inhibitor Of Nuclear Factor Kappa-B Kinase Subunit Epsilon; Inducible I Kappa-B Kinase; I-Kappa-B Kinase Epsilon ; IKK-Epsilon; IKK-E; IKKI; IKK-Related Kinase Epsilon; Inducible IkappaB Kinase; EC 2.7.11.10; EC 2.7.11; IkBKE

## Background

Gene Name: IKBKE  
NCBI Gene Entry: [9641](#)  
UniProt Entry: [Q14164](#)

## Application Information

Molecular Weight: Predicted, 80 kDa; observed, 80 kDa  
Clonality: Rabbit monoclonal antibody  
Clone ID: 23GB2720  
Species Reactivity: Human, mouse, rat  
Applications Tested: Western blotting (WB), flow cytometry (FCM), immunocytochemistry (IC)

## Immunogen

A synthesized peptide derived from human IKKi/IKKe

## Isotype

Rabbit IgG

## Storage Buffer

Supplied in PBS (pH 7.4) containing 50% glycerol, and 0.02% sodium azide.

## Storage

Store at -20 °C for one year.

## Recommended Dilutions

Western Blotting (WB): 1:1,000-1:5,000  
Flow Cytometry (FCM): 1:2,000  
Immunocytochemistry (IC): 1:100-1:1,000

---

### SUPPORT

SUPPORT@GENUINBIOTECH.COM  
TEL: +1-540-855-7041

### ORDERS

SALES@GENUINBIOTECH.COM  
FAX: +1-540-855-7041

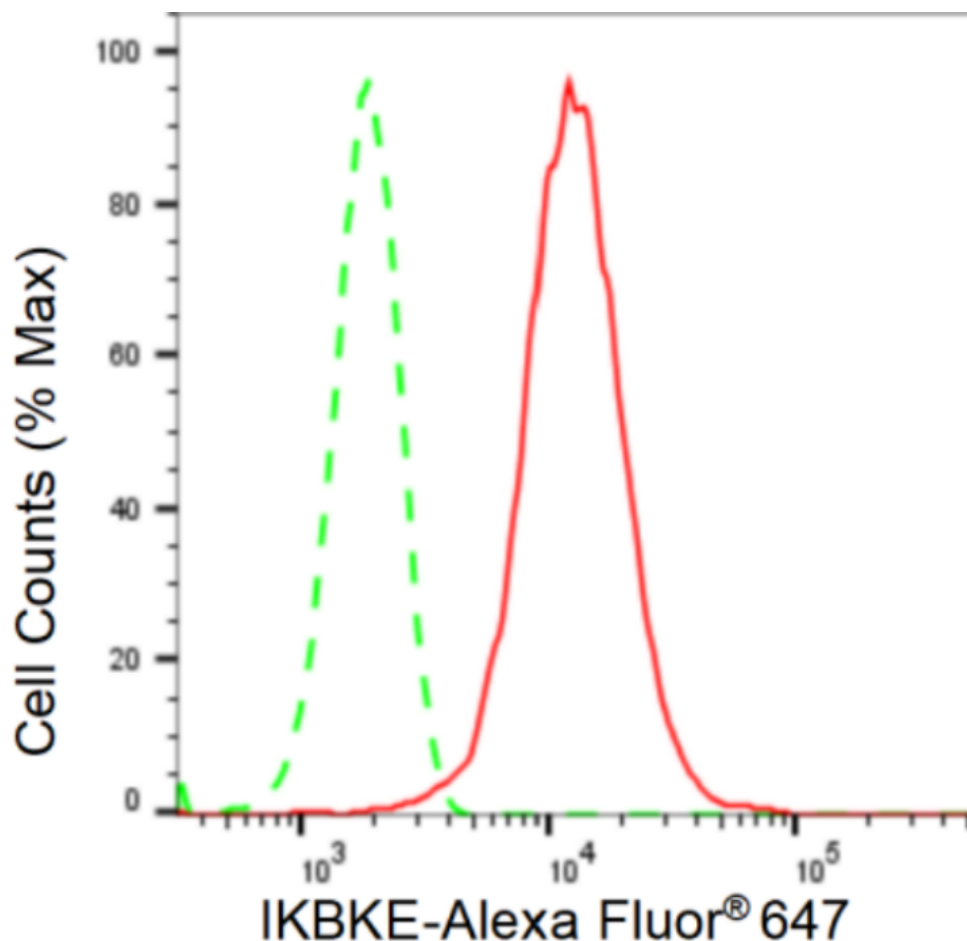
[WWW.GENUINBIOTECH.COM](http://WWW.GENUINBIOTECH.COM)

# Anti-IKBKE Recombinant Rabbit Monoclonal Antibody

PAGE 2

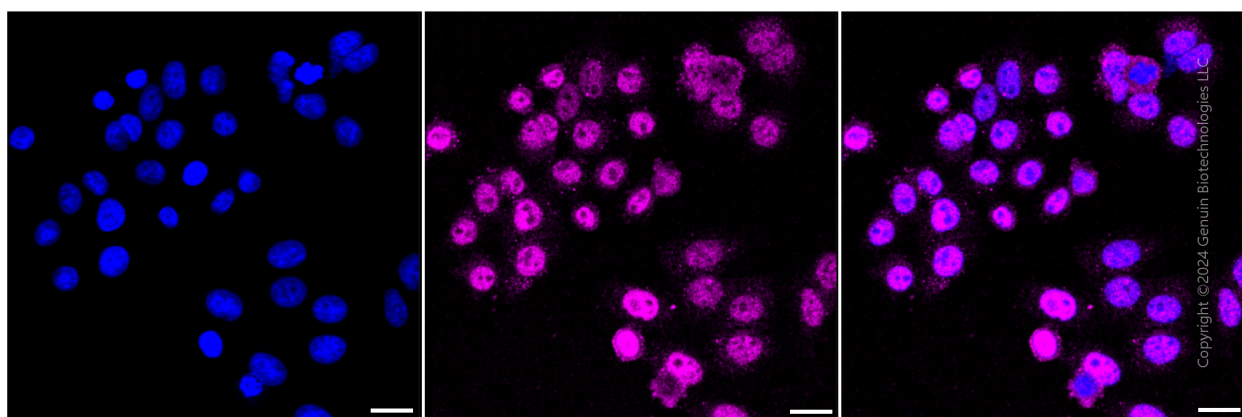
**Note:** This product is for research use only.

## Validation Data



Copyright ©2024 Genuin Biotechnologies LLC

Flow cytometric analysis of IKBKE expression in HepG2 cells using IKBKE antibody (Cat#1294, 1:2,000). Green, isotype control; red, IKBKE.



Copyright ©2024 Genuin Biotechnologies LLC

Immunocytochemical staining of HepG2 cells with IKBKE antibody (Cat#1294, 1:1,000). Nuclei were stained blue with DAPI; IKBKE was stained magenta with Alexa Fluor® 647. Images were

### SUPPORT

SUPPORT@GENUINBIOTECH.COM  
TEL: +1-540-855-7041

### ORDERS

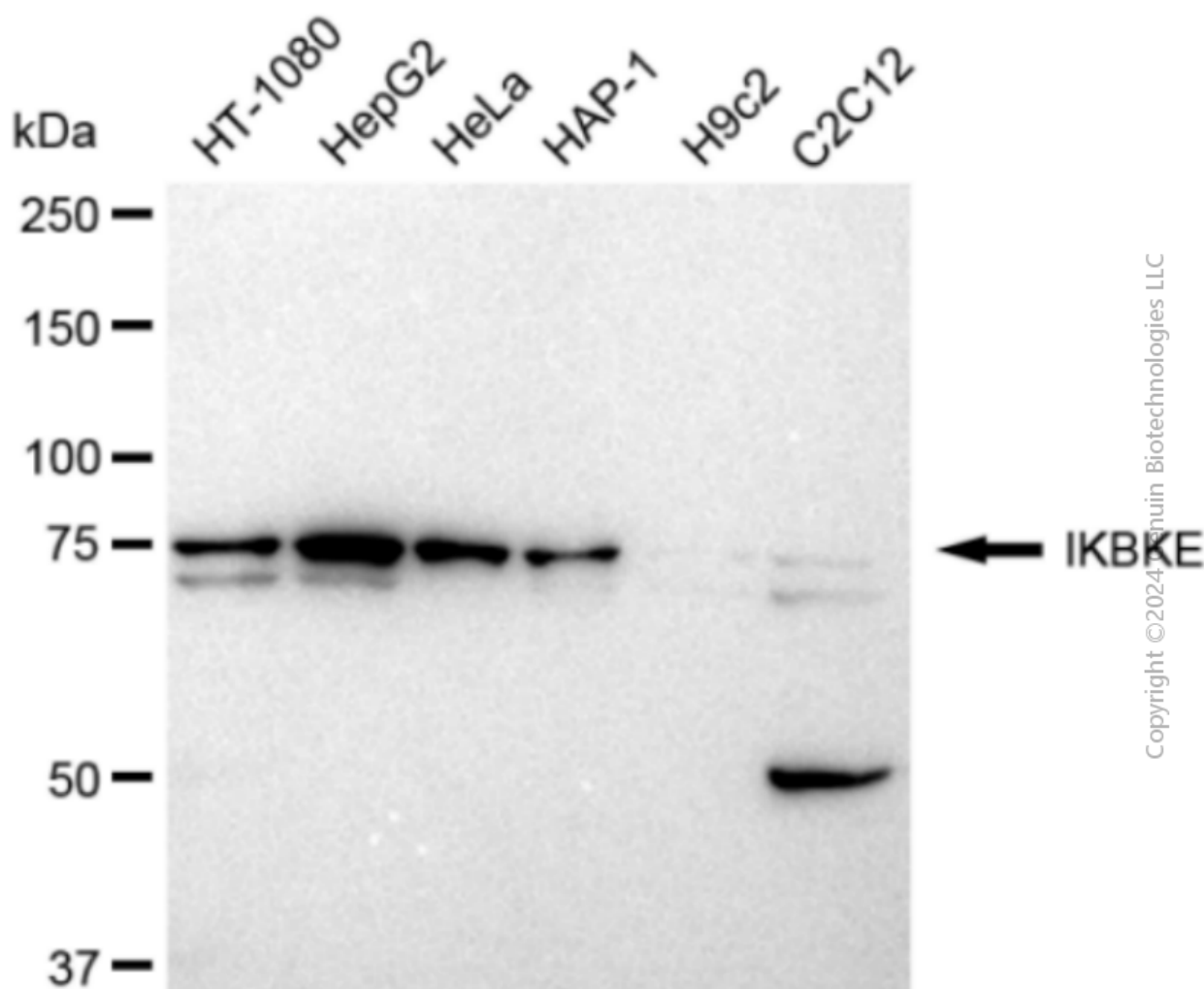
SALES@GENUINBIOTECH.COM  
FAX: +1-540-855-7041

WWW.GENUINBIOTECH.COM

## Anti-IKBKE Recombinant Rabbit Monoclonal Antibody

PAGE 3

taken using Leica stellaris 5. Protein abundance based on laser Intensity and smart gain: Medium.  
Scale bar: 20  $\mu$ m.



Western blotting analysis using anti-IKBKE antibody (Cat#1294). Total cell lysates (30  $\mu$ g) from various cell lines were loaded and separated by SDS-PAGE. The blot was incubated with anti-IKBKE antibody (Cat#1294, 1:5,000) and HRP-conjugated goat anti-rabbit secondary antibody (Cat#201, 1:20,000) respectively. Image was developed using FeQ™ ECL Substrate Kit (Cat#226).

### SUPPORT

SUPPORT@GENUINBIOTECH.COM  
TEL: +1-540-855-7041

### ORDERS

SALES@GENUINBIOTECH.COM  
FAX: +1-540-855-7041

WWW.GENUINBIOTECH.COM