

Anti-Matrix metalloproteinase 13 Recombinant Rabbit Monoclonal Antibody



Catalog #: 1301

Aliases

Matrix Metalloproteinase 13; Collagenase 3; CLG3; Matrix Metalloproteinase 13 (Collagenase 3); MMP-13; Matrix Metalloproteinase-13; EC 3.4.24.35 48; EC 3.4.24.22 48; EC 3.4.24.24 48; EC 3.4.24.65 48; EC 3.4.24.-; EC 3.4.24.7 48; EC 3.4.24 48; MANDP1; MDST

Background

Gene Name: MMP13

NCBI Gene Entry: [4322](#)

UniProt Entry: [P45452](#)

Application Information

Molecular Weight: Predicted, 54 kDa; observed, 54 kDa

Clonality: Rabbit monoclonal antibody

Clone ID: 23GB2865

Species Reactivity: Human

Applications Tested: Western blotting (WB), flow cytometry (FCM), immunocytochemistry (IC)

Immunogen

A synthesized peptide derived from human MMP13

Isotype

Rabbit IgG

Storage Buffer

Supplied in PBS (pH 7.4) containing 50% glycerol, and 0.02% sodium azide.

Storage

Store at -20 °C for one year.

Recommended Dilutions

Western Blotting (WB): 1:1,000-1:5,000

Flow Cytometry (FCM): 1:2,000

Immunocytochemistry (IC): 1:100-1:1,000

Note: This product is for research use only.

SUPPORT

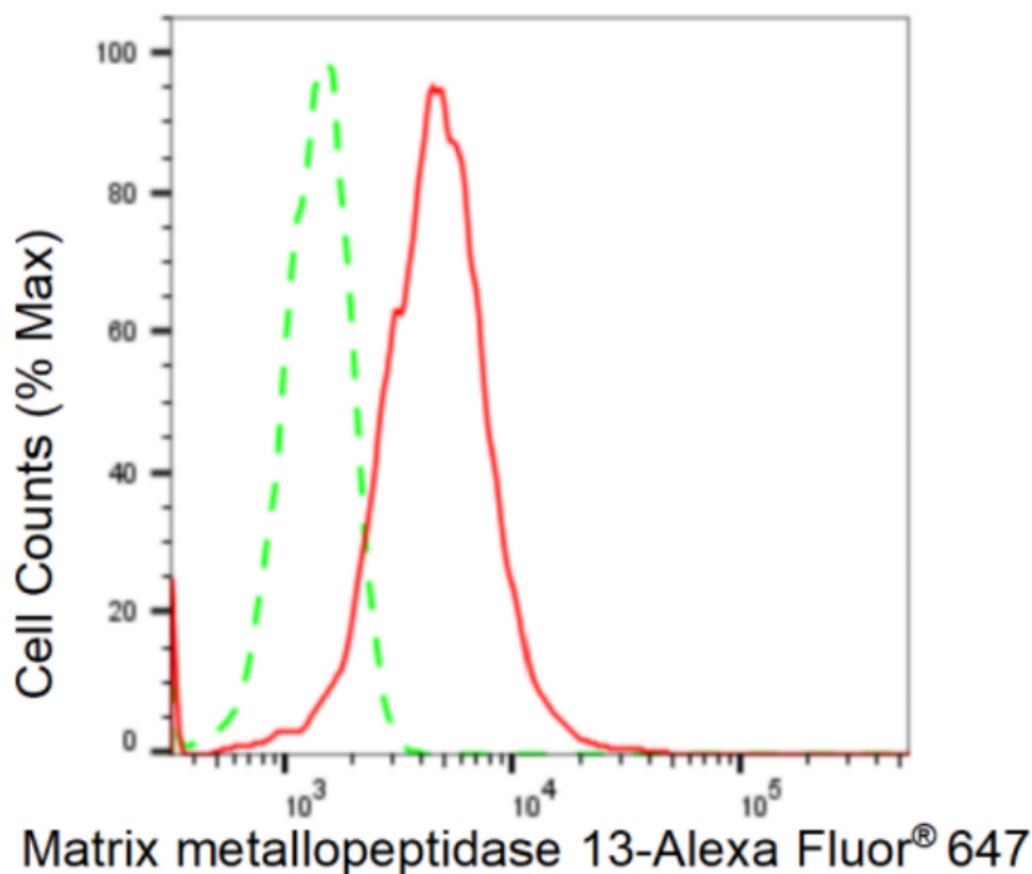
SUPPORT@GENUINBIOTECH.COM
TEL: +1-540-855-7041

ORDERS

SALES@GENUINBIOTECH.COM
FAX: +1-540-855-7041

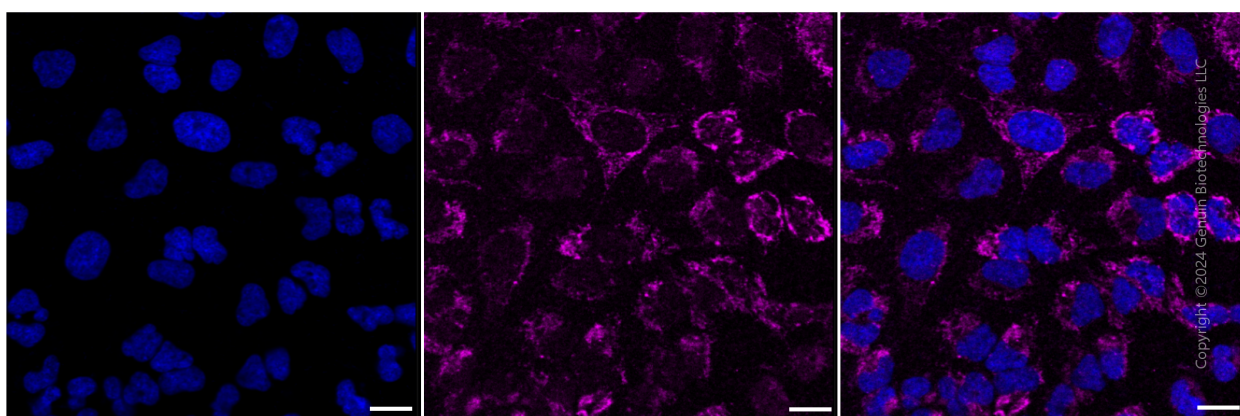
WWW.GENUINBIOTECH.COM

Validation Data



Copyright ©2024 Genuin Biotechnologies LLC

Flow cytometric analysis of Matrix metalloproteinase 13 expression in HeLa cells using Matrix metalloproteinase 13 antibody (Cat#1301, 1:2,000). Green, isotype control; red, Matrix metalloproteinase 13.



Copyright ©2024 Genuin Biotechnologies LLC

Immunocytochemical staining of HeLa cells with Matrix metalloproteinase 13 antibody (Cat#1301, 1:1,000). Nuclei were stained blue with DAPI; Matrix metalloproteinase 13 was stained magenta with Alexa Fluor® 647. Images were taken using Leica stellaris 5. Protein abundance based on laser Intensity and smart gain: Medium. Scale bar: 20 µm.

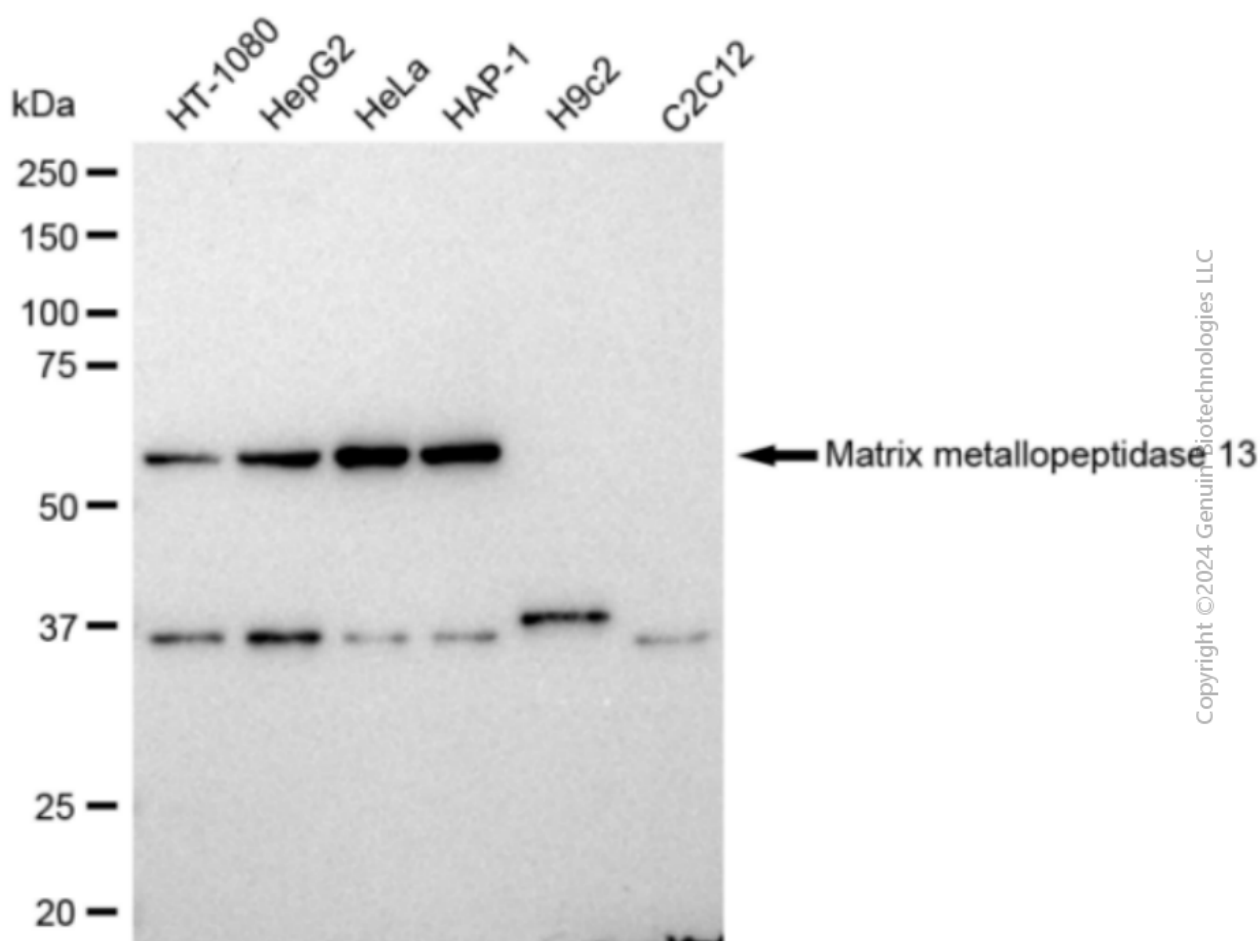
SUPPORT

SUPPORT@GENUINBIOTECH.COM
TEL: +1-540-855-7041

ORDERS

SALES@GENUINBIOTECH.COM
FAX: +1-540-855-7041

WWW.GENUINBIOTECH.COM



Western blotting analysis using anti-Matrix metalloproteinase 13 antibody (Cat#1301). Total cell lysates (30 μ g) from various cell lines were loaded and separated by SDS-PAGE. The blot was incubated with anti-Matrix metalloproteinase 13 antibody (Cat#1301, 1:5,000) and HRP-conjugated goat anti-rabbit secondary antibody (Cat#201, 1:20,000) respectively. Image was developed using FeQ™ ECL Substrate Kit (Cat#226).