

Anti-c-Rel Recombinant Rabbit Monoclonal Antibody



Catalog #: 1305

Aliases

REL; REL Proto-Oncogene, NF-KB Subunit; HIVEN86A; V-Rel Avian Reticuloendotheliosis Viral Oncogene Homolog; Proto-Oncogene C-Rel; C-Rel; Oncogene REL, Avian Reticuloendotheliosis; I-Rel; IMD92; C-REL; I-REL

Background

Gene Name: REL

NCBI Gene Entry: [5966](#)

UniProt Entry: [Q04864](#)

Application Information

Molecular Weight: Predicted, 69 kDa; observed, 68 kDa

Clonality: Rabbit monoclonal antibody

Clone ID: 23GB2600

Species Reactivity: Human

Applications Tested: Western blotting (WB), flow cytometry (FCM), immunocytochemistry (IC)

Immunogen

A synthesized peptide derived from human c-Rel

Isotype

Rabbit IgG

Storage Buffer

Supplied in PBS (pH 7.4) containing 50% glycerol, and 0.02% sodium azide.

Storage

Store at -20 °C for one year.

Recommended Dilutions

Western Blotting (WB): 1:1,000-1:5,000

Flow Cytometry (FCM): 1:2,000

Immunocytochemistry (IC): 1:100-1:1,000

Note: This product is for research use only.

SUPPORT

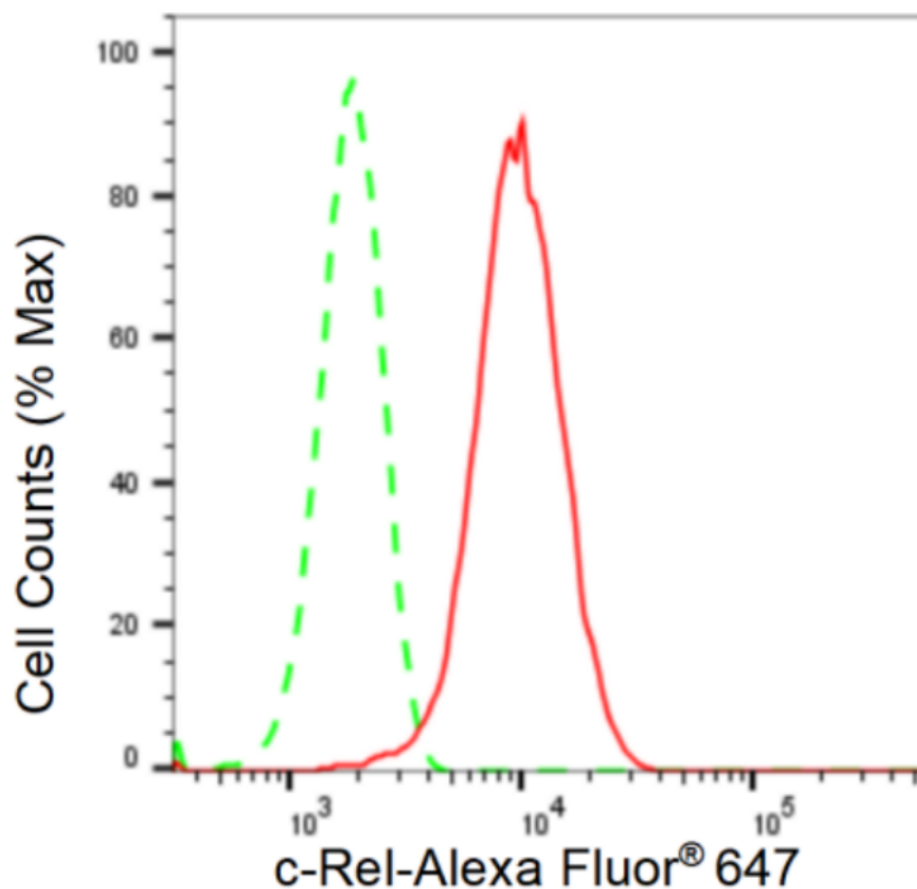
SUPPORT@GENUINBIOTECH.COM
TEL: +1-540-855-7041

ORDERS

SALES@GENUINBIOTECH.COM
FAX: +1-540-855-7041

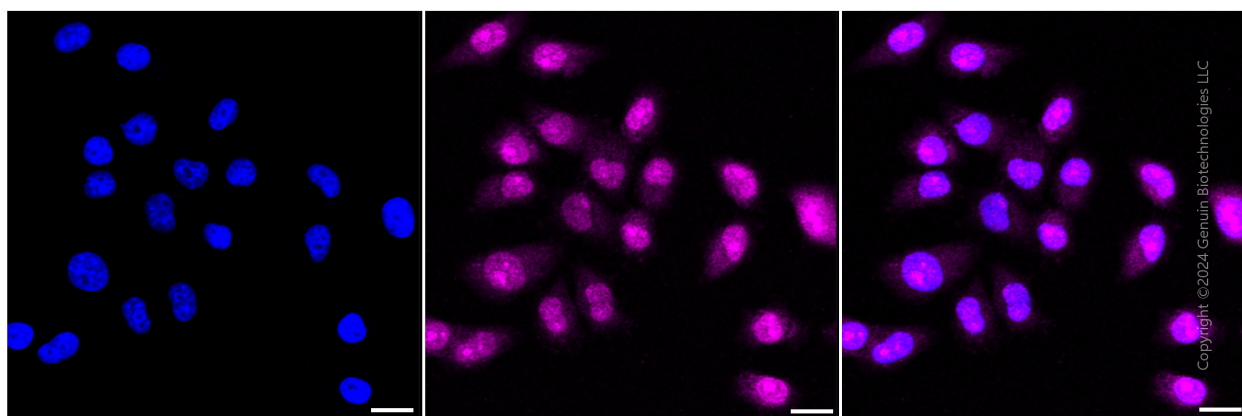
WWW.GENUINBIOTECH.COM

Validation Data



Copyright ©2024 Genuin Biotechnologies LLC

Flow cytometric analysis of c-Rel expression in HepG2 cells using c-Rel antibody (Cat#1305, 1:2,000). Green, isotype control; red, c-Rel.



Copyright ©2024 Genuin Biotechnologies LLC

Immunocytochemical staining of HepG2 cells with c-Rel antibody (Cat#1305, 1:1,000). Nuclei were stained blue with DAPI; C-Rel was stained magenta with Alexa Fluor® 647. Images were taken using Leica stellaris 5. Protein abundance based on laser Intensity and smart gain: Medium. Scale bar: 20 μm.

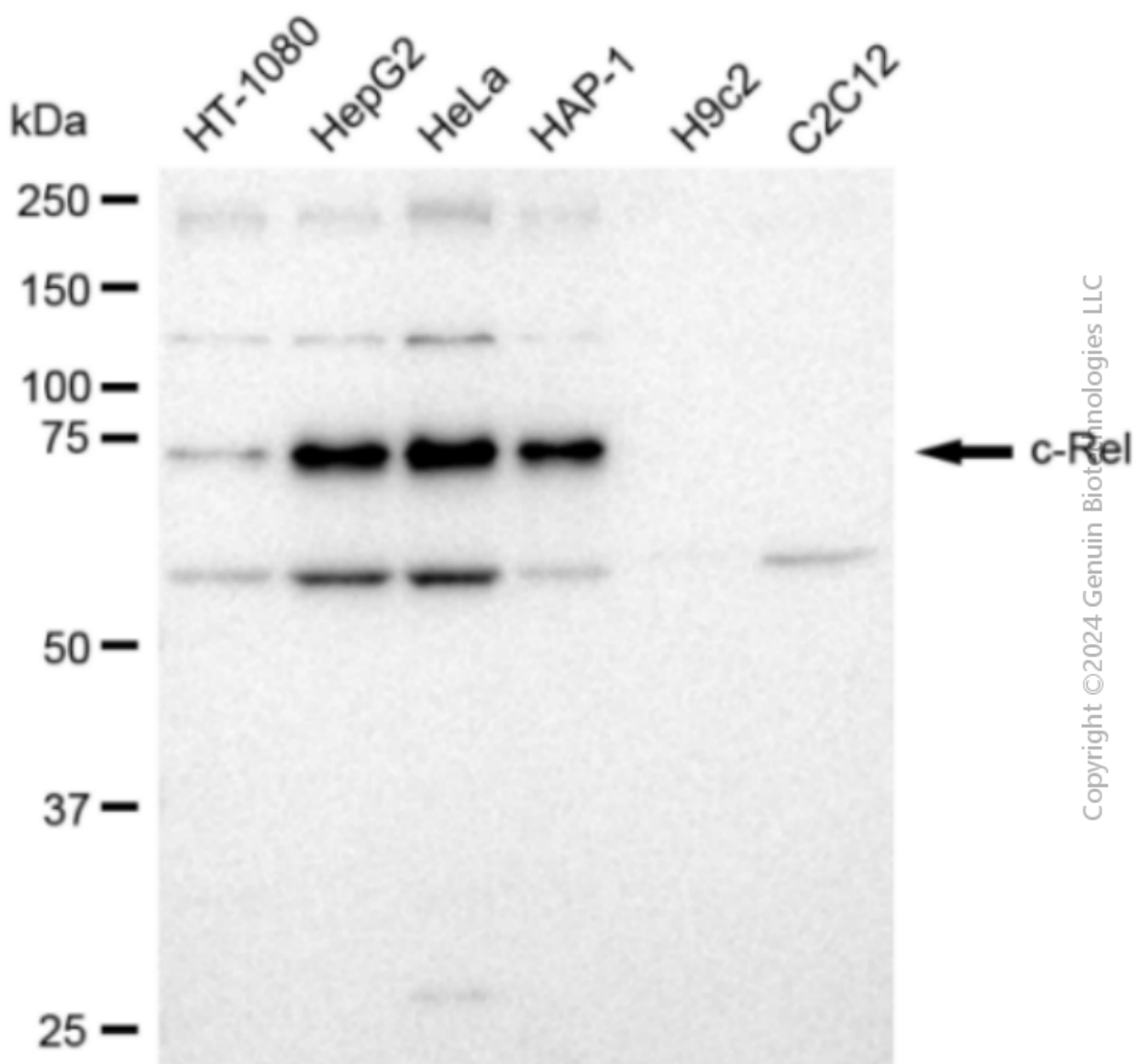
SUPPORT

SUPPORT@GENUINBIOTECH.COM
TEL: +1-540-855-7041

ORDERS

SALES@GENUINBIOTECH.COM
FAX: +1-540-855-7041

WWW.GENUINBIOTECH.COM



Western blotting analysis using anti-c-Rel antibody (Cat#1305). Total cell lysates (30 µg) from various cell lines were loaded and separated by SDS-PAGE. The blot was incubated with anti-c-Rel antibody (Cat#1305, 1:5,000) and HRP-conjugated goat anti-rabbit secondary antibody (Cat#201, 1:20,000) respectively. Image was developed using FeQ™ ECL Substrate Kit (Cat#226).