

Anti-Ring finger protein 20 Recombinant Rabbit Monoclonal Antibody



Catalog #: 1307

Aliases

RNF20; Ring Finger Protein 20; BRE1A; HBRE1; BRE1; RING-Type E3 Ubiquitin Transferase BRE1A; E3 Ubiquitin-Protein Ligase BRE1A; FLJ20382; FLJ11189; KAIA2779; BRE1 E3 Ubiquitin Ligase Homolog (S. Cerevisiae); BRE1 E3 Ubiquitin Ligase Homolog; Homolog Of S. Cerevisiae BRE1; RING Finger Protein 20; EC 2.3.2.27; EC 6.3.2; BRE1-A

Background

Gene Name: RNF20

NCBI Gene Entry: [56254](#)

UniProt Entry: [Q5VTR2](#)

Application Information

Molecular Weight: Predicted, 114 kDa; observed, 114 kDa

Clonality: Rabbit monoclonal antibody

Clone ID: 23GB2550

Species Reactivity: Human, mouse

Applications Tested: Western blotting (WB), flow cytometry (FCM), immunocytochemistry (IC)

Immunogen

A synthesized peptide derived from human RNF20

Isotype

Rabbit IgG

Storage Buffer

Supplied in PBS (pH 7.4) containing 50% glycerol, and 0.02% sodium azide.

Storage

Store at -20 °C for one year.

Recommended Dilutions

Western Blotting (WB): 1:1,000-1:5,000

Flow Cytometry (FCM): 1:2,000

Immunocytochemistry (IC): 1:100-1:1,000

SUPPORT

SUPPORT@GENUINBIOTECH.COM
TEL: +1-540-855-7041

ORDERS

SALES@GENUINBIOTECH.COM
FAX: +1-540-855-7041

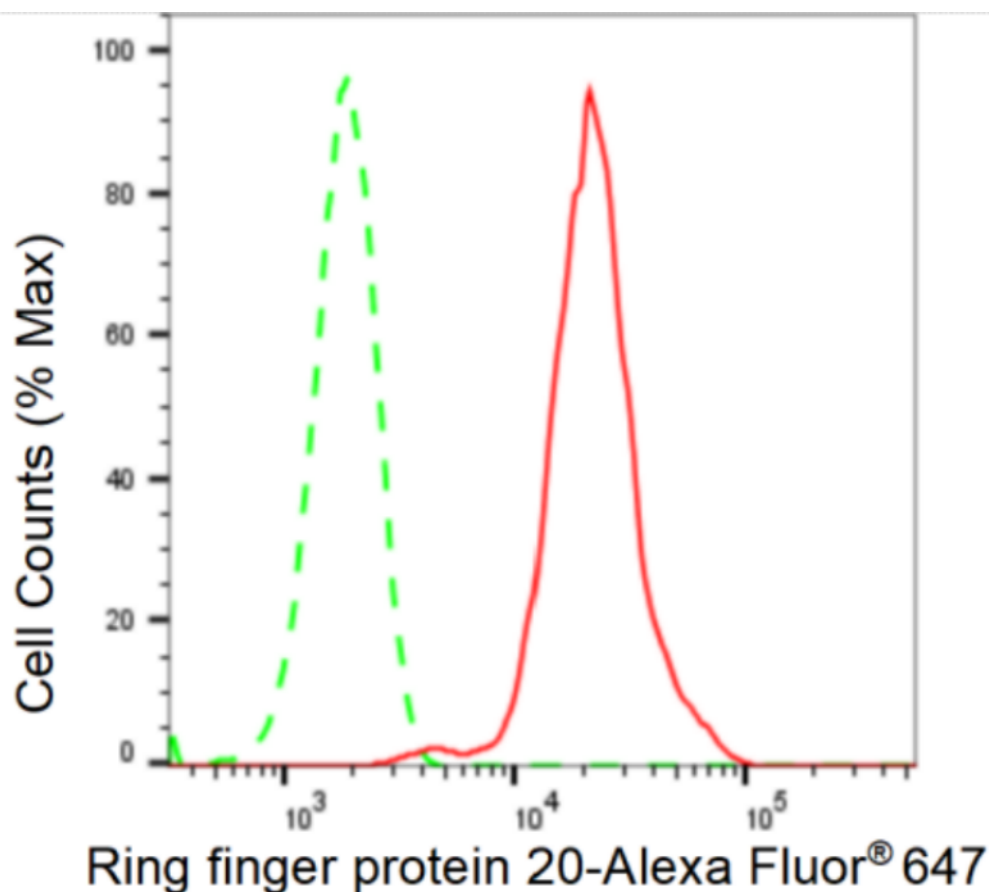
WWW.GENUINBIOTECH.COM

Anti-Ring finger protein 20 Recombinant Rabbit Monoclonal Antibody

PAGE 2

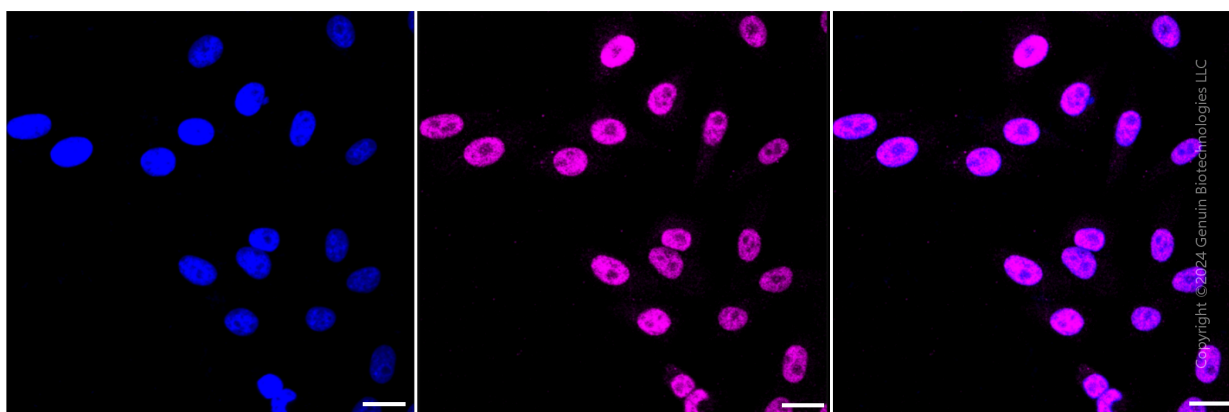
Note: This product is for research use only.

Validation Data



Copyright ©2024 Genuin Biotechnologies LLC

Flow cytometric analysis of Ring finger protein 20 expression in HepG2 cells using Ring finger protein 20 antibody (Cat#1307, 1:2,000). Green, isotype control; red, Ring finger protein 20.



Copyright ©2024 Genuin Biotechnologies LLC

Immunocytochemical staining of HepG2 cells with Ring finger protein 20 antibody (Cat#1307, 1:1,000). Nuclei were stained blue with DAPI; Ring finger protein 20 was stained magenta with Alexa Fluor[®] 647. Images were taken using Leica stellaris 5. Protein abundance based on laser

SUPPORT

SUPPORT@GENUINBIOTECH.COM
TEL: +1-540-855-7041

ORDERS

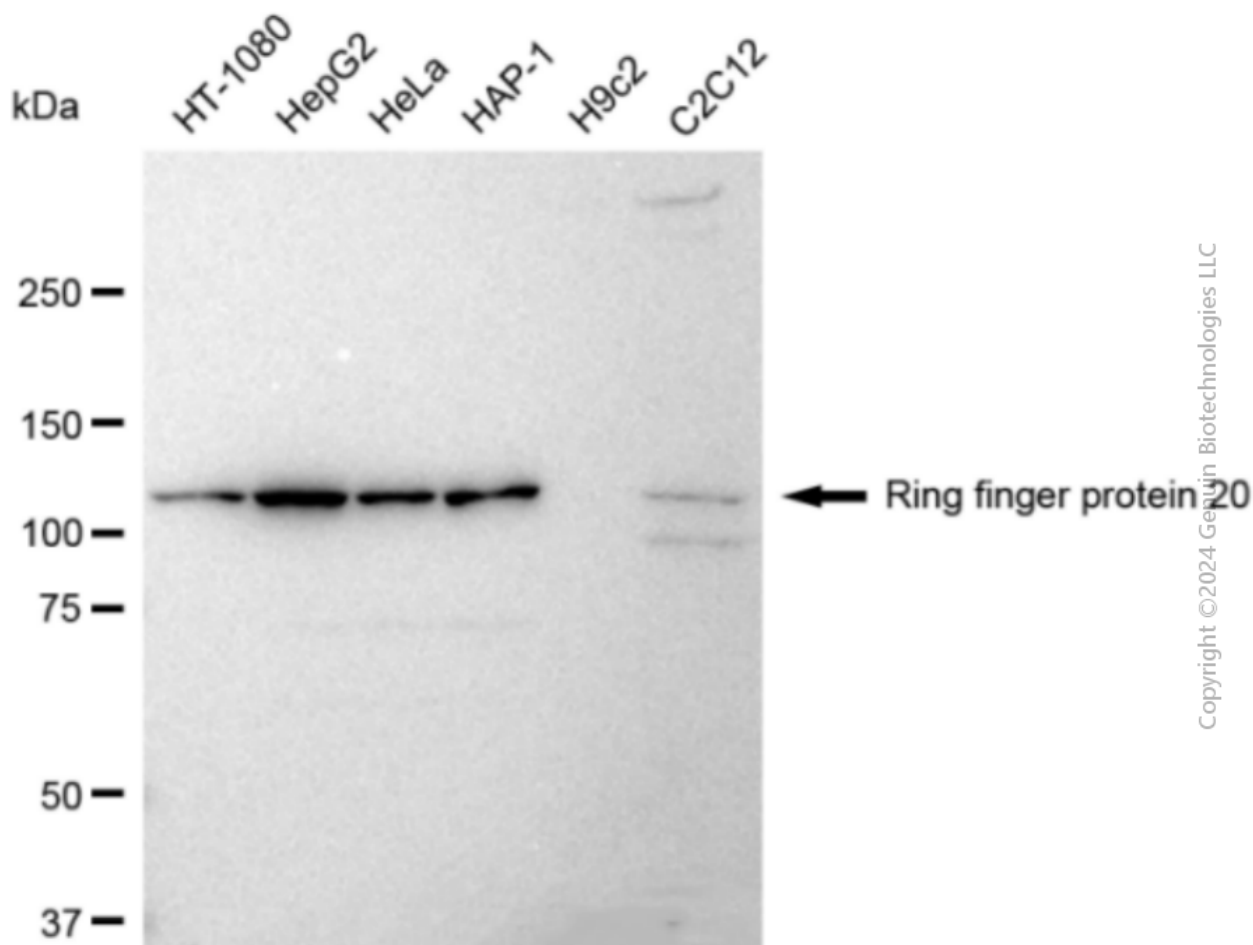
SALES@GENUINBIOTECH.COM
FAX: +1-540-855-7041

WWW.GENUINBIOTECH.COM

Anti-Ring finger protein 20 Recombinant Rabbit Monoclonal Antibody

PAGE 3

Intensity and smart gain: Medium. Scale bar: 20 μ m.



Western blotting analysis using anti-Ring finger protein 20 antibody (Cat#1307). Total cell lysates (30 μ g) from various cell lines were loaded and separated by SDS-PAGE. The blot was incubated with anti-Ring finger protein 20 antibody (Cat#1307, 1:5,000) and HRP-conjugated goat anti-rabbit secondary antibody (Cat#201, 1:20,000) respectively. Image was developed using FeQTM ECL Substrate Kit (Cat#226).

SUPPORT

SUPPORT@GENUINBIOTECH.COM
TEL: +1-540-855-7041

ORDERS

SALES@GENUINBIOTECH.COM
FAX: +1-540-855-7041

WWW.GENUINBIOTECH.COM