

Anti-SUZ12 Recombinant Rabbit Monoclonal Antibody



Catalog #: 1310

Aliases

SUZ12; SUZ12 Polycomb Repressive Complex 2 Subunit; JAZ1; CHET9; KIAA0160; Chromatin Precipitated E2F Target 9 Protein; Suppressor Of Zeste 12 Protein Homolog; Joined To JAZF1 Protein; Polycomb Protein SUZ12; ChET 9 Protein; Suppressor Of Zeste 12 Homolog (Drosophila); IMMAS

Background

Gene Name: SUZ12

NCBI Gene Entry: [23512](#)

UniProt Entry: [Q15022](#)

Application Information

Molecular Weight: Predicted, 83 kDa; observed, 83 kDa

Clonality: Rabbit monoclonal antibody

Clone ID: 23GB2755

Species Reactivity: Human, mouse, rat

Applications Tested: Western blotting (WB), flow cytometry (FCM), immunocytochemistry (IC)

Immunogen

A synthesized peptide derived from human SUZ12

Isotype

Rabbit IgG

Storage Buffer

Supplied in PBS (pH 7.4) containing 50% glycerol, and 0.02% sodium azide.

Storage

Store at -20 °C for one year.

Recommended Dilutions

Western Blotting (WB): 1:1,000-1:5,000

Flow Cytometry (FCM): 1:2,000

Immunocytochemistry (IC): 1:100-1:1,000

SUPPORT

SUPPORT@GENUINBIOTECH.COM
TEL: +1-540-855-7041

ORDERS

SALES@GENUINBIOTECH.COM
FAX: +1-540-855-7041

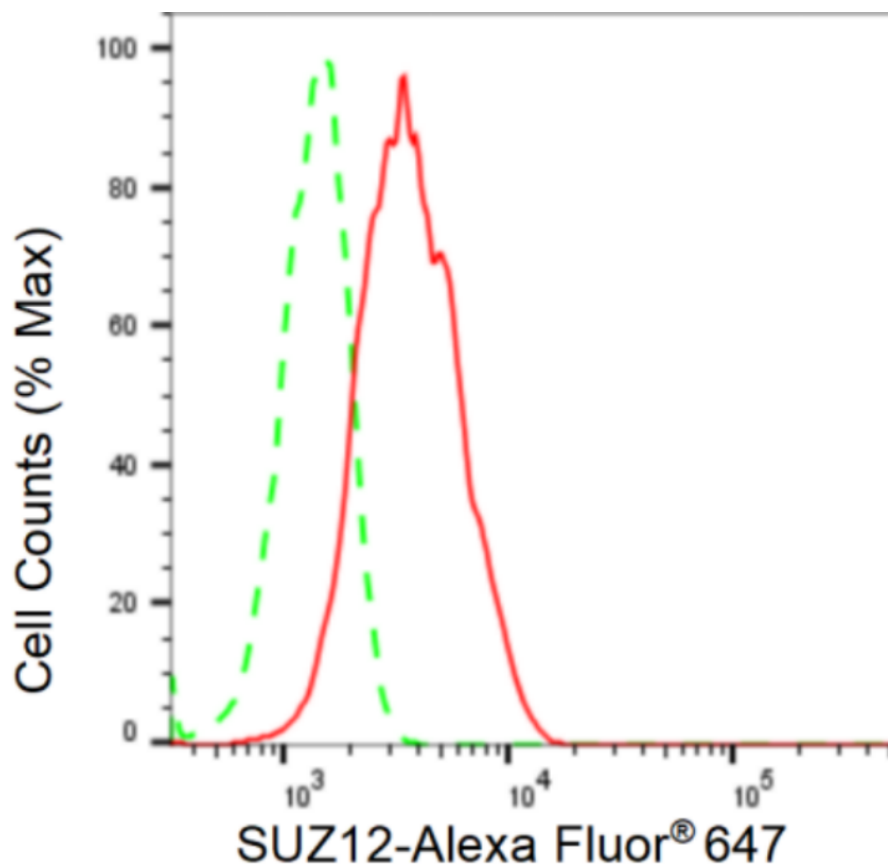
WWW.GENUINBIOTECH.COM

Anti-SUZ12 Recombinant Rabbit Monoclonal Antibody

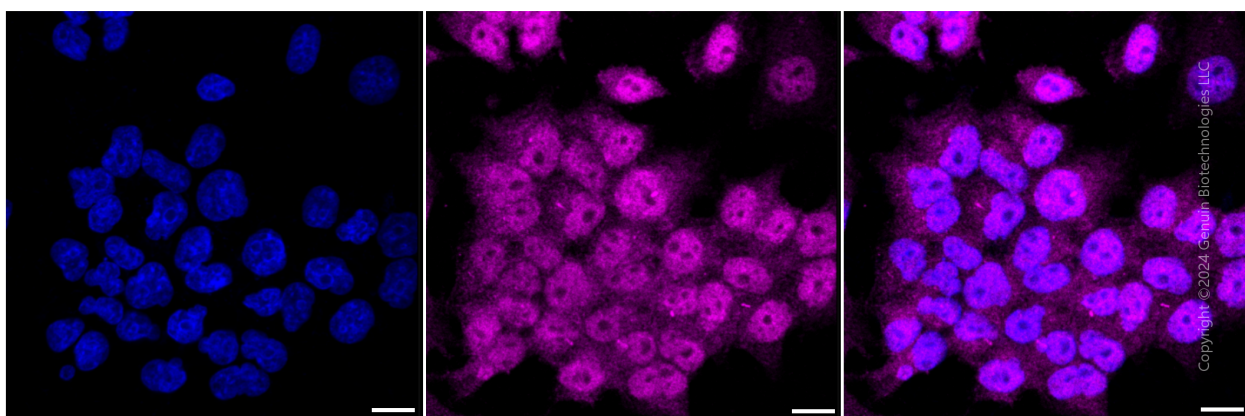
PAGE 2

Note: This product is for research use only.

Validation Data



Copyright ©2024 Genuin Biotechnologies LLC



Copyright ©2024 Genuin Biotechnologies LLC

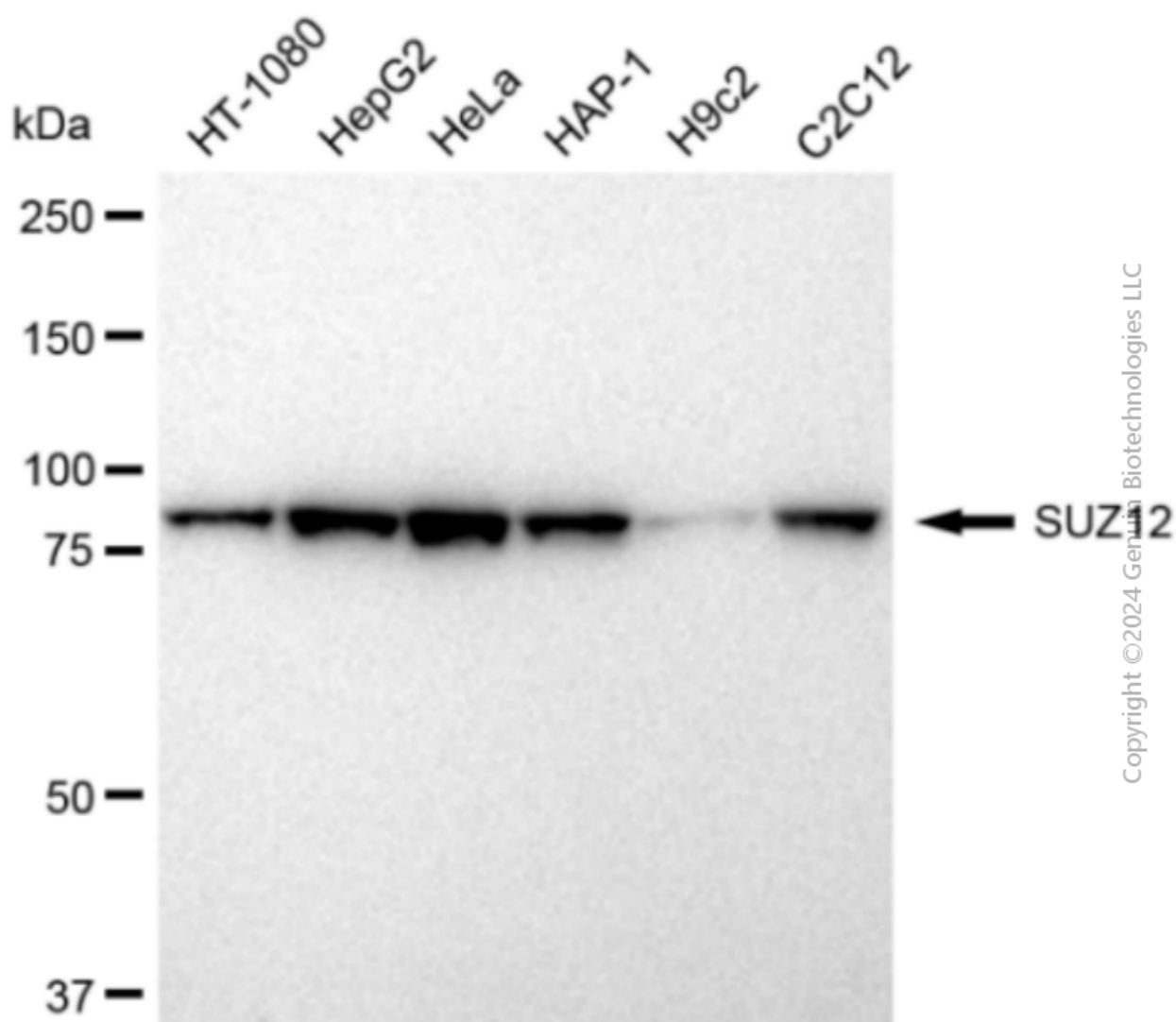
SUPPORT

SUPPORT@GENUINBIOTECH.COM
TEL: +1-540-855-7041

ORDERS

SALES@GENUINBIOTECH.COM
FAX: +1-540-855-7041

WWW.GENUINBIOTECH.COM



Western blotting analysis using anti-SUZ12 antibody (Cat#1310). Total cell lysates (30 μ g) from various cell lines were loaded and separated by SDS-PAGE. The blot was incubated with anti-SUZ12 antibody (Cat#1310, 1:5,000) and HRP-conjugated goat anti-rabbit secondary antibody (Cat#201, 1:20,000) respectively. Image was developed using FeQ™ ECL Substrate Kit (Cat#226).