

Anti-GAPDH Recombinant Rabbit Monoclonal Antibody



Catalog #: 1313

Aliases

Glyceraldehyde-3-Phosphate Dehydrogenase; Peptidyl-Cysteine S-Nitrosylase GAPDH; EC 1.2.1.12; GAPD; Epididymis Secretory Sperm Binding Protein Li 162eP; Oct1 Coactivator In S Phase, 38 Kd Component; Aging-Associated Gene 9 Protein; OCAS, P38 Component ; HEL-S-162eP; EC 2.6.99.-; EC 1.2.1; G3PD

Background

Gene Name: GAPDH

NCBI Gene Entry: [2597](#)

UniProt Entry: [P04406](#)

Application Information

Molecular Weight: Predicted, 36 kDa; observed, 36 kDa

Clonality: Rabbit monoclonal antibody

Clone ID: 23GB2470

Species Reactivity: Human, mouse, rat

Applications Tested: Western blotting (WB), flow cytometry (FCM), immunocytochemistry (IC)

Immunogen

A synthesized peptide derived from human GAPDH

Isotype

Rabbit IgG

Storage Buffer

Supplied in PBS (pH 7.4) containing 50% glycerol, and 0.02% sodium azide.

Storage

Store at -20 °C for one year.

Recommended Dilutions

Western Blotting (WB): 1:2,000-1:10,000

Flow Cytometry (FCM): 1:2,000

Immunocytochemistry (IC): 1:100-1:1,000

SUPPORT

SUPPORT@GENUINBIOTECH.COM
TEL: +1-540-855-7041

ORDERS

SALES@GENUINBIOTECH.COM
FAX: +1-540-855-7041

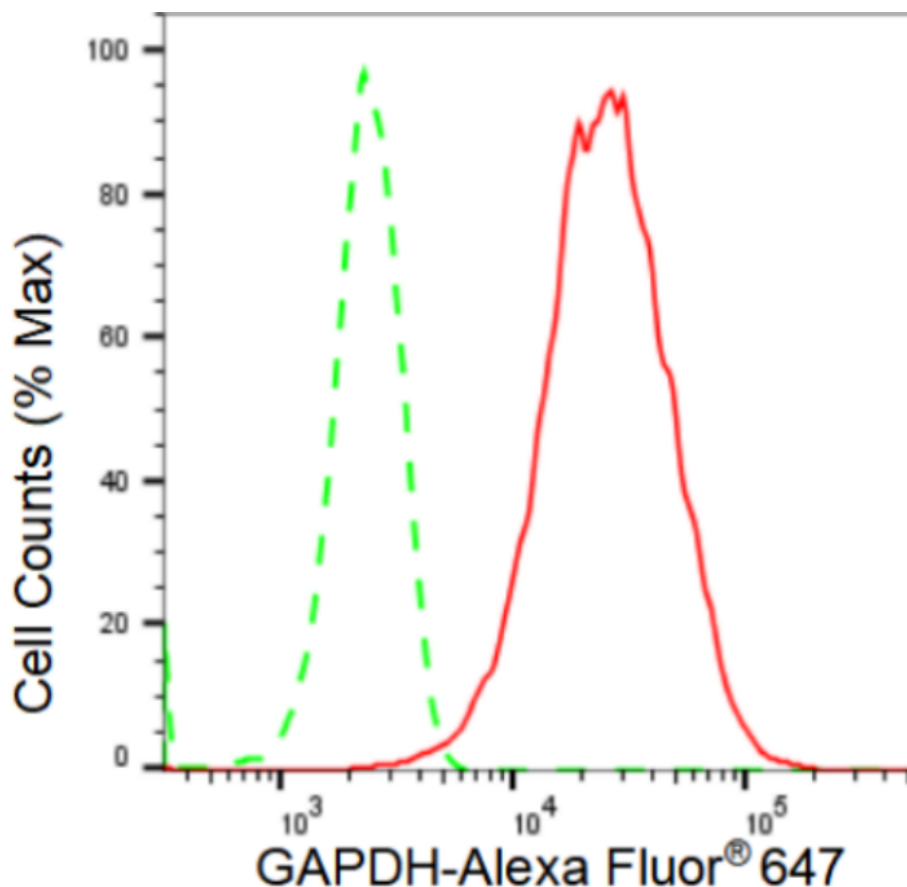
WWW.GENUINBIOTECH.COM

Anti-GAPDH Recombinant Rabbit Monoclonal Antibody

PAGE 2

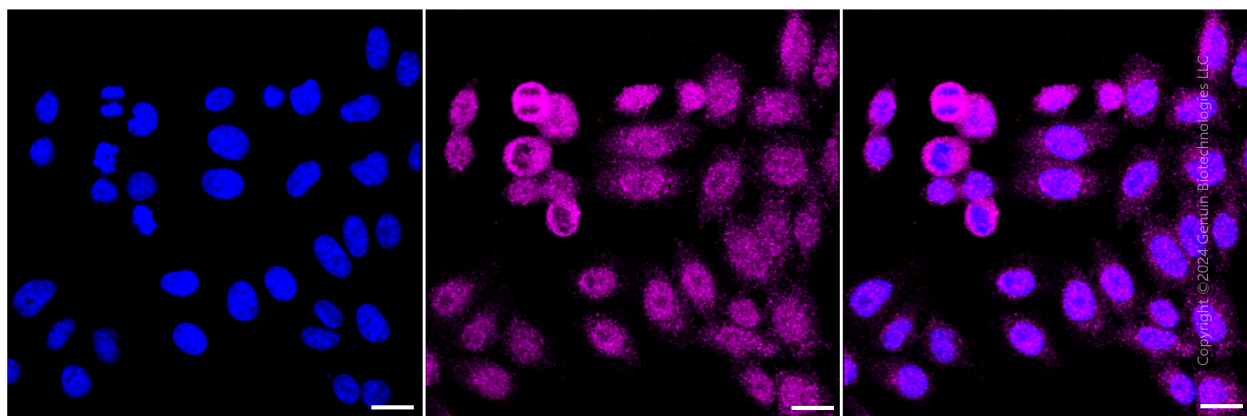
Note: This product is for research use only.

Validation Data



Copyright ©2024 Genuin Biotechnologies LLC

Flow cytometric analysis of GAPDH expression in HepG2 cells using GAPDH antibody (Cat#1313, 1:2,000). Green, isotype control; red, GAPDH.



Copyright ©2024 Genuin Biotechnologies LLC

Immunocytochemical staining of HepG2 cells with GAPDH antibody (Cat#1313, 1:1,000). Nuclei were stained blue with DAPI; GAPDH was stained magenta with Alexa Fluor® 647. Images were taken using Leica stellaris 5. Protein abundance based on laser Intensity and smart gain: Medium.

SUPPORT

SUPPORT@GENUINBIOTECH.COM
TEL: +1-540-855-7041

ORDERS

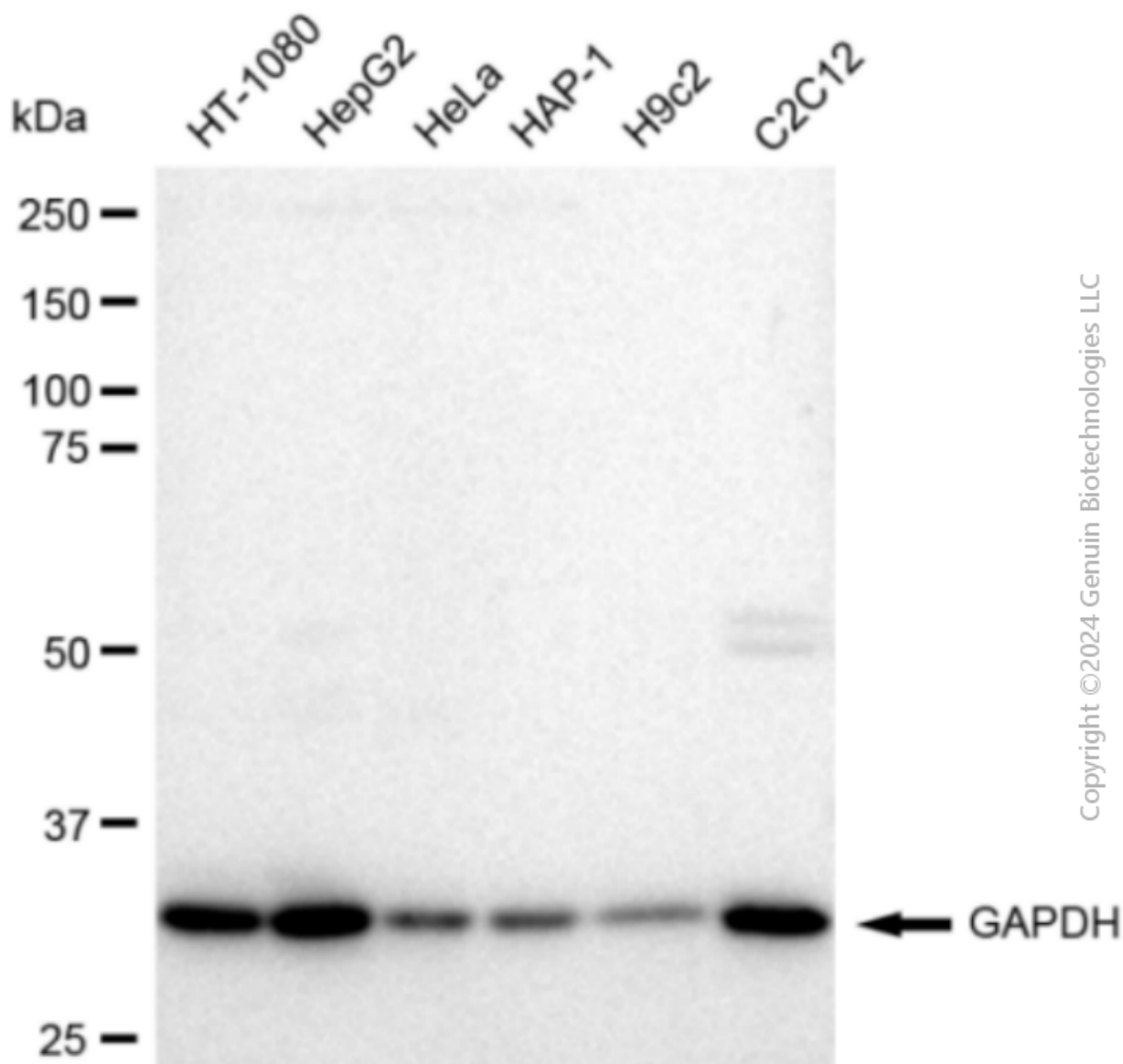
SALES@GENUINBIOTECH.COM
FAX: +1-540-855-7041

WWW.GENUINBIOTECH.COM

Anti-GAPDH Recombinant Rabbit Monoclonal Antibody

PAGE 3

Scale bar: 20 μ m.



Western blotting analysis using anti-GAPDH antibody (Cat#1313). Total cell lysates (30 μ g) from various cell lines were loaded and separated by SDS-PAGE. The blot was incubated with anti-GAPDH antibody (Cat#1313, 1:10,000) and HRP-conjugated goat anti-rabbit secondary antibody (Cat#201, 1:20,000) respectively. Image was developed using FeQTM ECL Substrate Kit (Cat#226).

SUPPORT

SUPPORT@GENUINBIOTECH.COM
TEL: +1-540-855-7041

ORDERS

SALES@GENUINBIOTECH.COM
FAX: +1-540-855-7041

WWW.GENUINBIOTECH.COM