

# Anti-SDHA Recombinant Rabbit Monoclonal Antibody



**Catalog #: 1317**

## Aliases

SDHA; Succinate Dehydrogenase Complex Flavoprotein Subunit A; SDHF; Flavoprotein Subunit Of Complex II; SDH2; FP; Succinate Dehydrogenase [Ubiquinone] Flavoprotein Subunit, Mitochondria; Succinate Dehydrogenase Complex, Subunit A, Flavoprotein (Fp); Succinate Dehydrogenase Complex Subunit A, Flavoprotein (Fp); Succinate Dehydrogenase [Ubiquinone] Flavoprotein Subunit; EC 1.3.5.1; CMD1GG; MC2DN1; NDAXOA; PGL5; SDH1; Fp

## Background

Gene Name: SDHA

NCBI Gene Entry: [6389](#)

UniProt Entry: [P31040](#)

## Application Information

Molecular Weight: Predicted, 73 kDa; observed, 65 kDa

Clonality: Rabbit monoclonal antibody

Clone ID: 23GB2630

Species Reactivity: Human, mouse, rat

Applications Tested: Western blotting (WB), flow cytometry (FCM), immunocytochemistry (IC)

## Immunogen

A synthesized peptide derived from human SDHA

## Isotype

Rabbit IgG

## Storage Buffer

Supplied in PBS (pH 7.4) containing 50% glycerol, and 0.02% sodium azide.

## Storage

Store at -20 °C for one year.

## Recommended Dilutions

Western Blotting (WB): 1:1,000-1:5,000

Flow Cytometry (FCM): 1:2,000

Immunocytochemistry (IC): 1:100-1:1,000

---

### SUPPORT

SUPPORT@GENUINBIOTECH.COM  
TEL: +1-540-855-7041

### ORDERS

SALES@GENUINBIOTECH.COM  
FAX: +1-540-855-7041

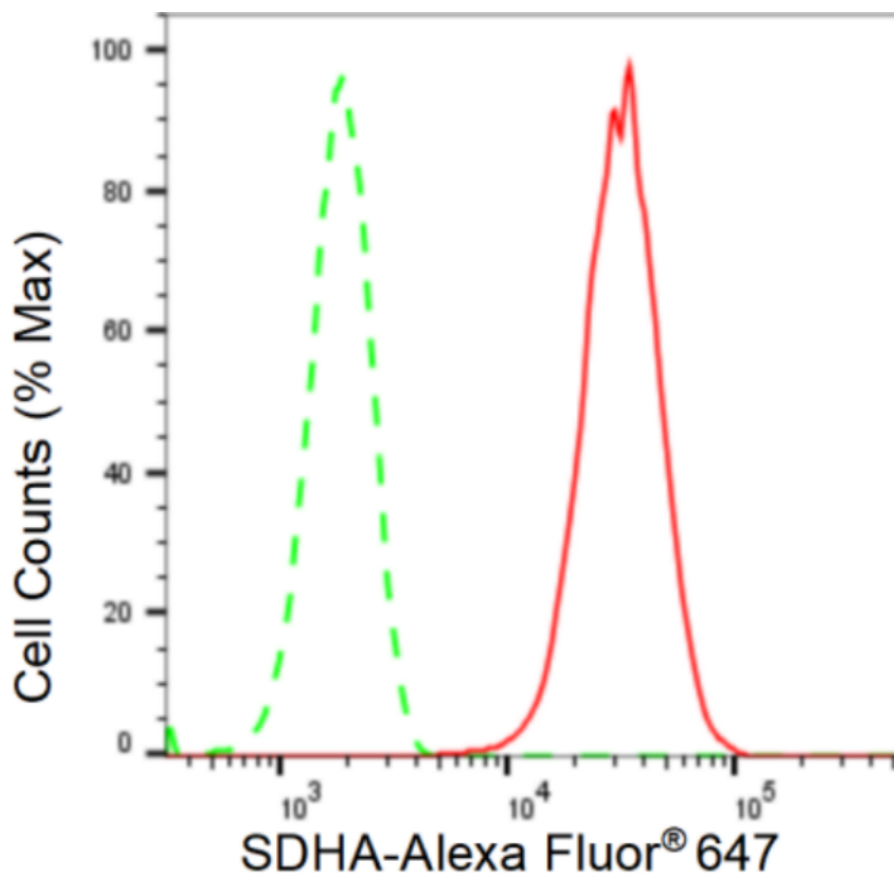
[WWW.GENUINBIOTECH.COM](http://WWW.GENUINBIOTECH.COM)

# Anti-SDHA Recombinant Rabbit Monoclonal Antibody

PAGE 2

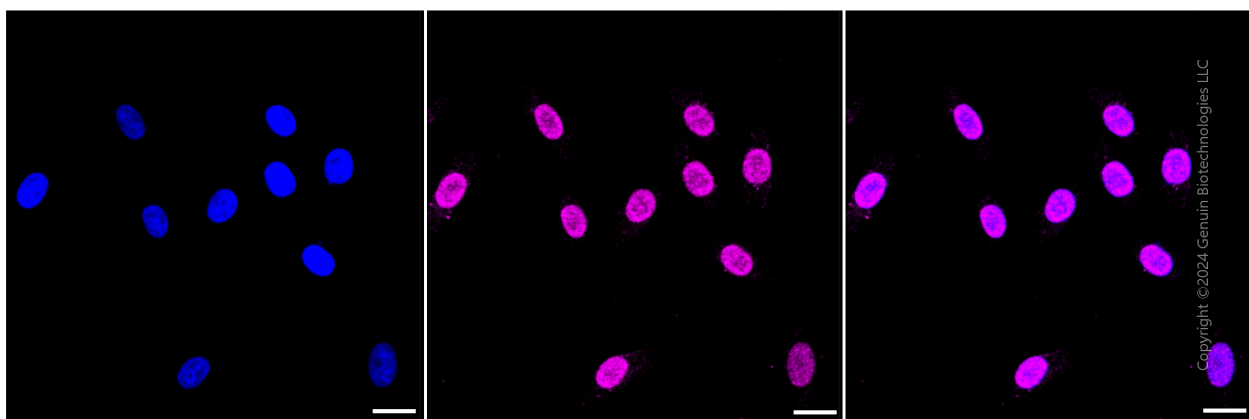
**Note:** This product is for research use only.

## Validation Data



Copyright ©2024 Genuin Biotechnologies LLC

Flow cytometric analysis of SDHA expression in HepG2 cells using SDHA antibody (Cat#1317, 1:2,000). Green, isotype control; red, SDHA.



Copyright ©2024 Genuin Biotechnologies LLC

Immunocytochemical staining of HepG2 cells with SDHA antibody (Cat#1317, 1:1,000). Nuclei were stained blue with DAPI; SDHA was stained magenta with Alexa Fluor® 647. Images were taken using Leica stellaris 5. Protein abundance based on laser Intensity and smart gain: Medium.

### SUPPORT

SUPPORT@GENUINBIOTECH.COM  
TEL: +1-540-855-7041

### ORDERS

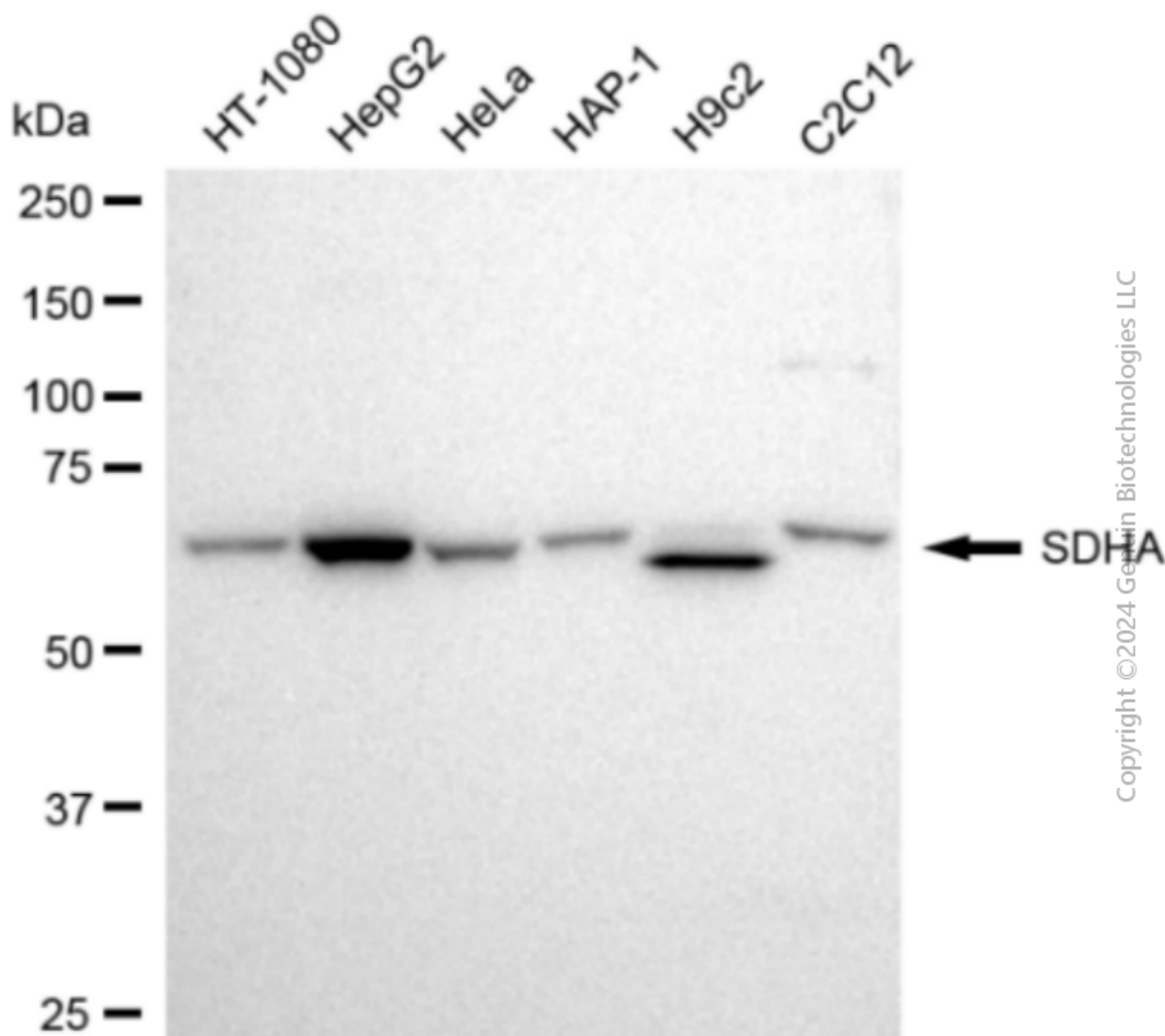
SALES@GENUINBIOTECH.COM  
FAX: +1-540-855-7041

WWW.GENUINBIOTECH.COM

## Anti-SDHA Recombinant Rabbit Monoclonal Antibody

PAGE 3

Scale bar: 20  $\mu$ m.



Western blotting analysis using anti-SDHA antibody (Cat#1317). Total cell lysates (30  $\mu$ g) from various cell lines were loaded and separated by SDS-PAGE. The blot was incubated with anti-SDHA antibody (Cat#1317, 1:5,000) and HRP-conjugated goat anti-rabbit secondary antibody (Cat#201, 1:20,000) respectively. Image was developed using FeQ™ ECL Substrate Kit (Cat#226). SDHA, succinate dehydrogenase complex flavoprotein subunit A.

### SUPPORT

SUPPORT@GENUINBIOTECH.COM  
TEL: +1-540-855-7041

### ORDERS

SALES@GENUINBIOTECH.COM  
FAX: +1-540-855-7041

WWW.GENUINBIOTECH.COM