

Anti-CPSF3 Recombinant Rabbit Monoclonal Antibody



Catalog #: 1335

Aliases

CPSF3; Cleavage And Polyadenylation Specific Factor 3; CPSF73; CPSF-73; Cleavage And Polyadenylation Specificity Factor Subunit 3; Cleavage And Polyadenylation Specific Factor 3, 73kDa; MRNA 3'-End-Processing Endonuclease CPSF-73; YSH1; Cleavage And Polyadenylation Specificity Factor 73 KDa Subunit; Cleavage And Polyadenylation Specific Factor 3, 73kD Subunit; CPSF 73 KDa Subunit; EC 3.1.27.-; EC 3.1.27; NEDMHSN; NEDMHS

Background

Gene Name: CPSF3

NCBI Gene Entry: [51692](#)

UniProt Entry: [Q9UKF6](#)

Application Information

Molecular Weight: Predicted, 77 kDa; observed, 77 kDa

Clonality: Rabbit monoclonal antibody

Clone ID: 23GB3105

Species Reactivity: Human, mouse, rat

Applications Tested: Western blotting (WB), immunocytochemistry (IC), flow cytometry (FCM)

Immunogen

A synthesized peptide derived from human CPSF73

Isotype

Rabbit IgG

Storage Buffer

Supplied in PBS (pH 7.4) containing 50% glycerol, and 0.02% sodium azide.

Storage

Store at -20 °C for one year.

Recommended Dilutions

Western Blotting (WB): 1:1,000-1:5,000

Immunocytochemistry (IC): 1:100-1:1,000

Flow Cytometry (FCM) : 1:2,000

SUPPORT

SUPPORT@GENUINBIOTECH.COM
TEL: +1-540-855-7041

ORDERS

SALES@GENUINBIOTECH.COM
FAX: +1-540-855-7041

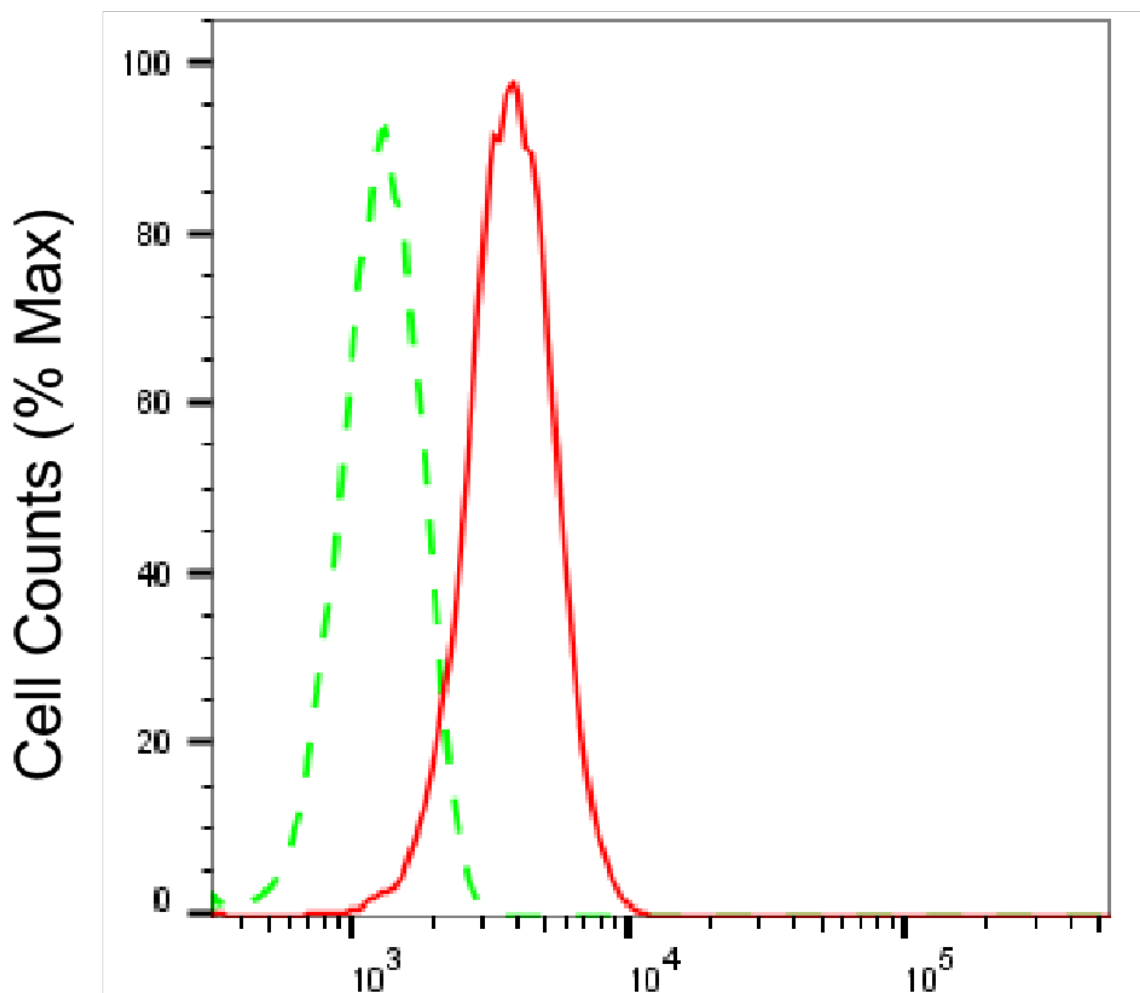
WWW.GENUINBIOTECH.COM

Anti-CPSF3 Recombinant Rabbit Monoclonal Antibody

PAGE 2

Note: This product is for research use only.

Validation Data



Copyright ©2025 Genuin Biotechnologies LLC

CPSF3-Alexa Fluor® 647

Flow cytometric analysis of CPSF3 expression in HepG2 cells using anti-CPSF3 antibody (Cat#1335, 1:2,000). Green, isotype control; red, CPSF3.

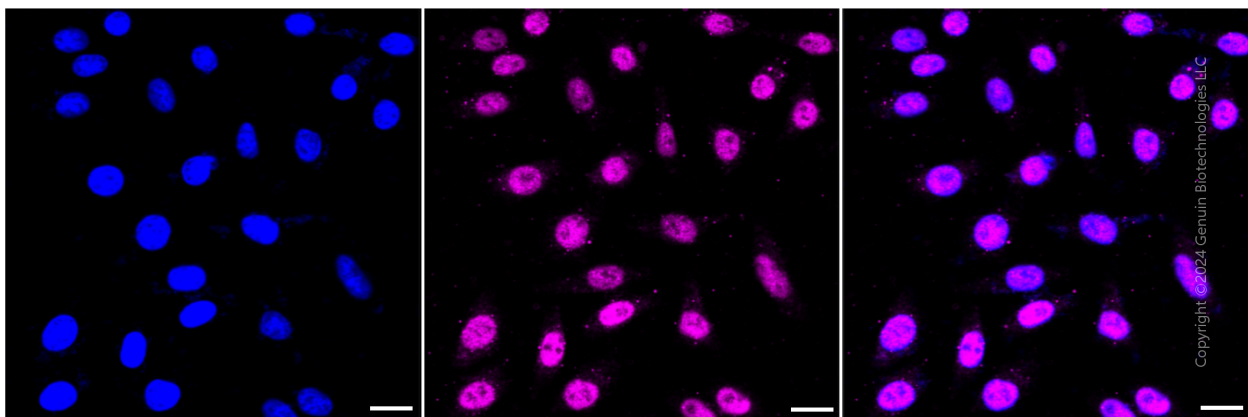
SUPPORT

SUPPORT@GENUINBIOTECH.COM
TEL: +1-540-855-7041

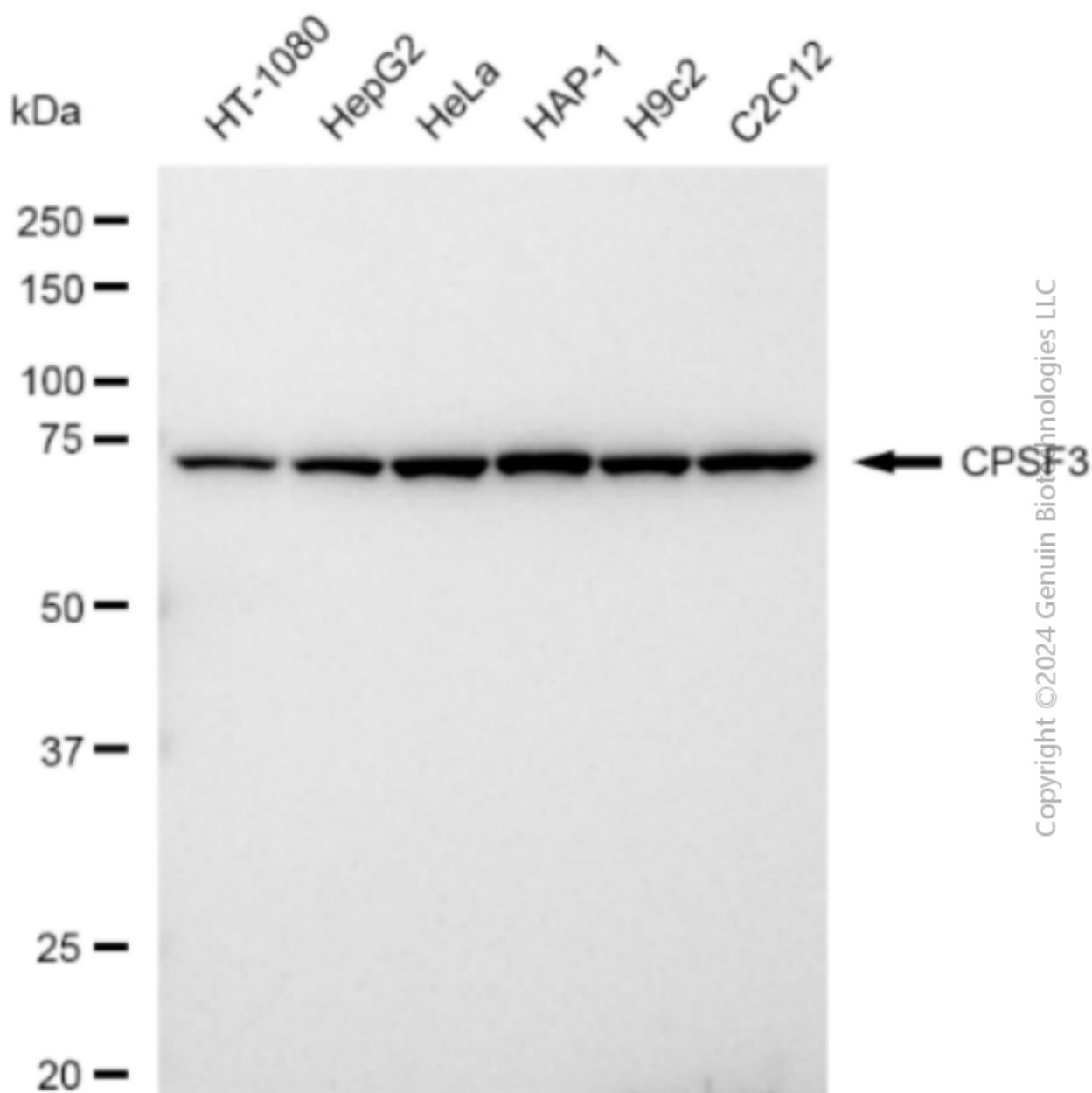
ORDERS

SALES@GENUINBIOTECH.COM
FAX: +1-540-855-7041

WWW.GENUINBIOTECH.COM



Immunocytochemical staining of HepG2 cells with CPSF3 antibody (Cat#1335, 1:1,000). Nuclei were stained blue with DAPI; CPSF3 was stained magenta with Alexa Fluor® 647. Images were taken using Leica stellaris 5. Protein abundance based on laser Intensity and smart gain: Medium. Scale bar: 20 μ m.



Copyright ©2024 Genuin Biotechnologies LLC

Western blotting analysis using anti-CPSF3 antibody (Cat#1335). Total cell lysates (30 µg) from various cell lines were loaded and separated by SDS-PAGE. The blot was incubated with anti-CPSF3 antibody (Cat#1335, 1:5,000) and HRP-conjugated goat anti-rabbit secondary antibody (Cat#201, 1:20,000) respectively. Image was developed using FeQ™ ECL Substrate Kit (Cat#226).

SUPPORT

SUPPORT@GENUINBIOTECH.COM
TEL: +1-540-855-7041

ORDERS

SALES@GENUINBIOTECH.COM
FAX: +1-540-855-7041

WWW.GENUINBIOTECH.COM