

# Anti-B cell linker Recombinant Rabbit Monoclonal Antibody



**Catalog #: 1341**

## Aliases

BLNK; B Cell Linker; SLP-65; SLP65; BASH; B-Cell Adapter Containing A SH2 Domain Protein; BLNK-S; Src Homology [SH2] Domain-Containing Leukocyte Protein Of 65 KD; Src Homology 2 Domain-Containing Leukocyte Protein Of 65 KDa; B-Cell Adapter Containing A Src Homology 2 Domain Protein; B Cell Adaptor Containing SH2 Domain; Cytoplasmic Adapter Protein; B-Cell Linker Protein; B-Cell Activation; LY57; Bca; Ly57; AGM4; BCA

## Background

Gene Name: BLNK

NCBI Gene Entry: [29760](#)

UniProt Entry: [Q8WV28](#)

## Application Information

Molecular Weight: Predicted, 50 kDa; observed, 70 kDa

Clonality: Rabbit monoclonal antibody

Clone ID: 23GB2990

Species Reactivity: Human, mouse, rat

Applications Tested: Western blotting (WB), immunocytochemistry (IC)

## Immunogen

A synthesized peptide derived from human BLNK

## Isotype

Rabbit IgG

## Storage Buffer

Supplied in PBS (pH 7.4) containing 50% glycerol, and 0.02% sodium azide.

## Storage

Store at -20 °C for one year.

## Recommended Dilutions

Western Blotting (WB): 1:1,000-1:5,000

Immunocytochemistry (IC): 1:100-1:1,000

---

### SUPPORT

SUPPORT@GENUINBIOTECH.COM  
TEL: +1-540-855-7041

### ORDERS

SALES@GENUINBIOTECH.COM  
FAX: +1-540-855-7041

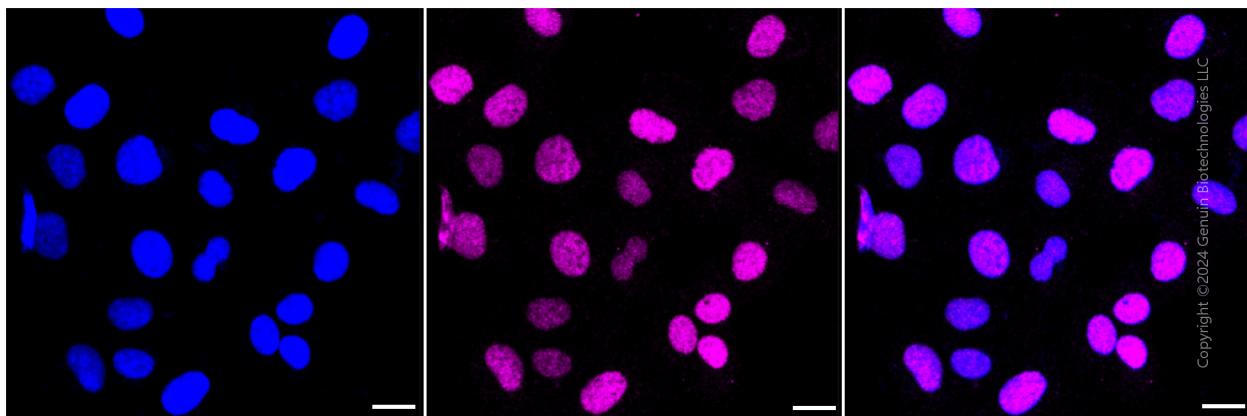
[WWW.GENUINBIOTECH.COM](http://WWW.GENUINBIOTECH.COM)

# Anti-B cell linker Recombinant Rabbit Monoclonal Antibody

PAGE 2

**Note:** This product is for research use only.

## Validation Data



Immunocytochemical staining of HT-1080 cells with B cell linker antibody (Cat#1341, 1:1,000). Nuclei were stained blue with DAPI; B cell linker was stained magenta with Alexa Fluor® 647. Images were taken using Leica stellaris 5. Protein abundance based on laser Intensity and smart gain: Low. Scale bar: 20  $\mu$ m.

---

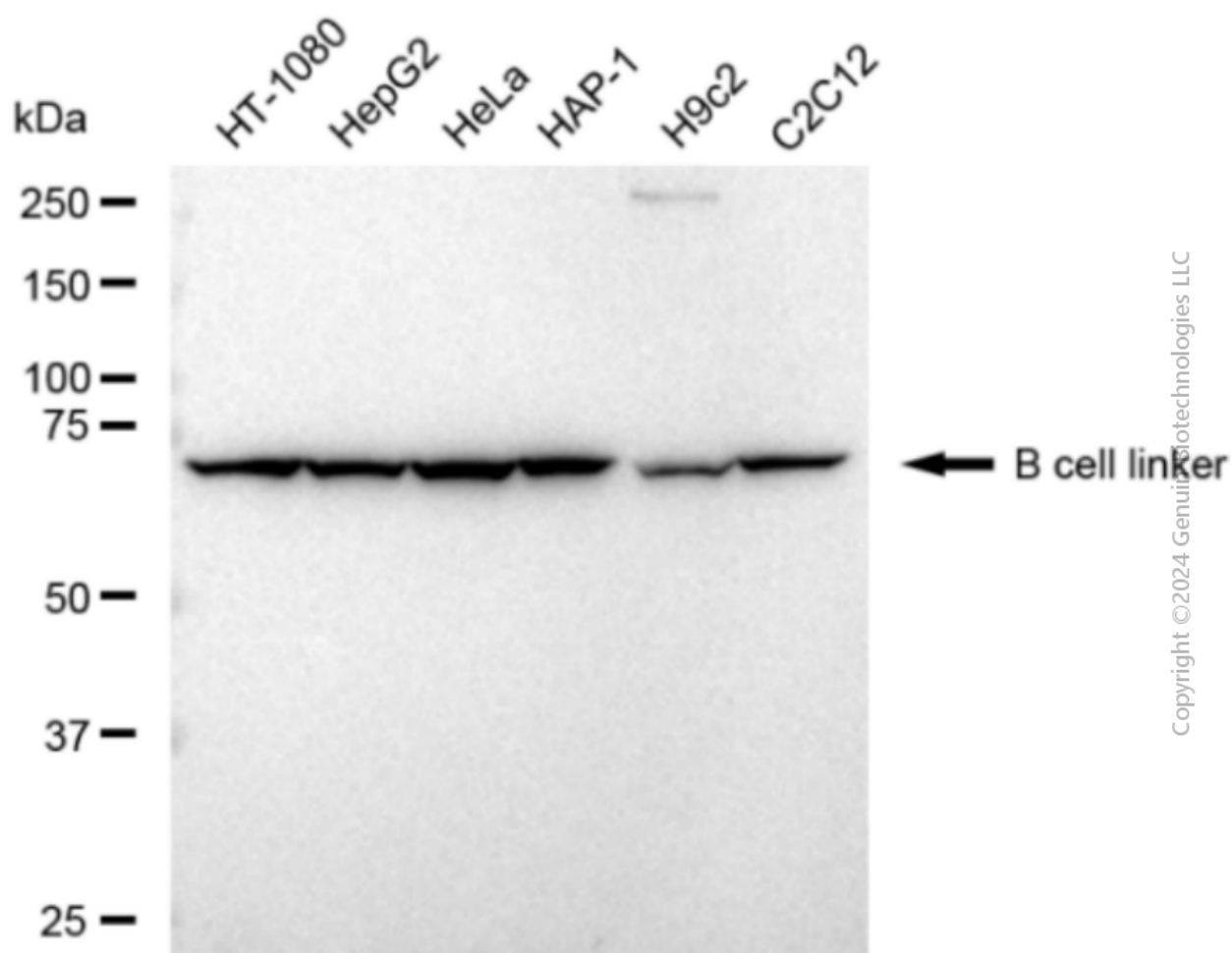
### SUPPORT

SUPPORT@GENUINBIOTECH.COM  
TEL: +1-540-855-7041

### ORDERS

SALES@GENUINBIOTECH.COM  
FAX: +1-540-855-7041

[WWW.GENUINBIOTECH.COM](http://WWW.GENUINBIOTECH.COM)



Western blotting analysis using anti-B cell linker antibody (Cat#1341). Total cell lysates (30 µg) from various cell lines were loaded and separated by SDS-PAGE. The blot was incubated with anti-B cell linker antibody (Cat#1341, 1:5,000) and HRP-conjugated goat anti-rabbit secondary antibody (Cat#201, 1:20,000) respectively. Image was developed using FeQ™ ECL Substrate Kit (Cat#226).