

Anti-CD9 Recombinant Rabbit Monoclonal Antibody



Catalog #: 1359

Aliases

CD9; CD9 Molecule; TSPAN29; MRP-1; Tetraspanin-29; MIC3; P24; Cell Growth-Inhibiting Gene 2 Protein; Motility Related Protein-1; Leukocyte Antigen MIC3; CD9 Antigen (P24); CD9 Antigen; 5H9 Antigen; BA2; Motility-Related Protein; BA-2/P24 Antigen; Antigen CD9; TSPAN-29; Tspan-29; DRAP-27; BTCC-1

Background

Gene Name: CD9

NCBI Gene Entry: [928](#)

UniProt Entry: [P21926](#)

Application Information

Molecular Weight: Predicted, 25 kDa; observed, 22 kDa

Clonality: Rabbit monoclonal antibody

Clone ID: 23GB3355

Species Reactivity: Human, mouse, rat

Applications Tested: Western blotting (WB), flow cytometry (FCM), immunocytochemistry (IC)

Immunogen

A synthesized peptide derived from human CD9

Isotype

Rabbit IgG

Storage Buffer

Supplied in PBS (pH 7.4) containing 50% glycerol, and 0.02% sodium azide.

Storage

Store at -20 °C for one year.

Recommended Dilutions

Western Blotting (WB): 1:1,000-1:5,000

Flow Cytometry (FCM): 1:2,000

Immunocytochemistry (IC): 1:100-1:1,000

SUPPORT

SUPPORT@GENUINBIOTECH.COM
TEL: +1-540-855-7041

ORDERS

SALES@GENUINBIOTECH.COM
FAX: +1-540-855-7041

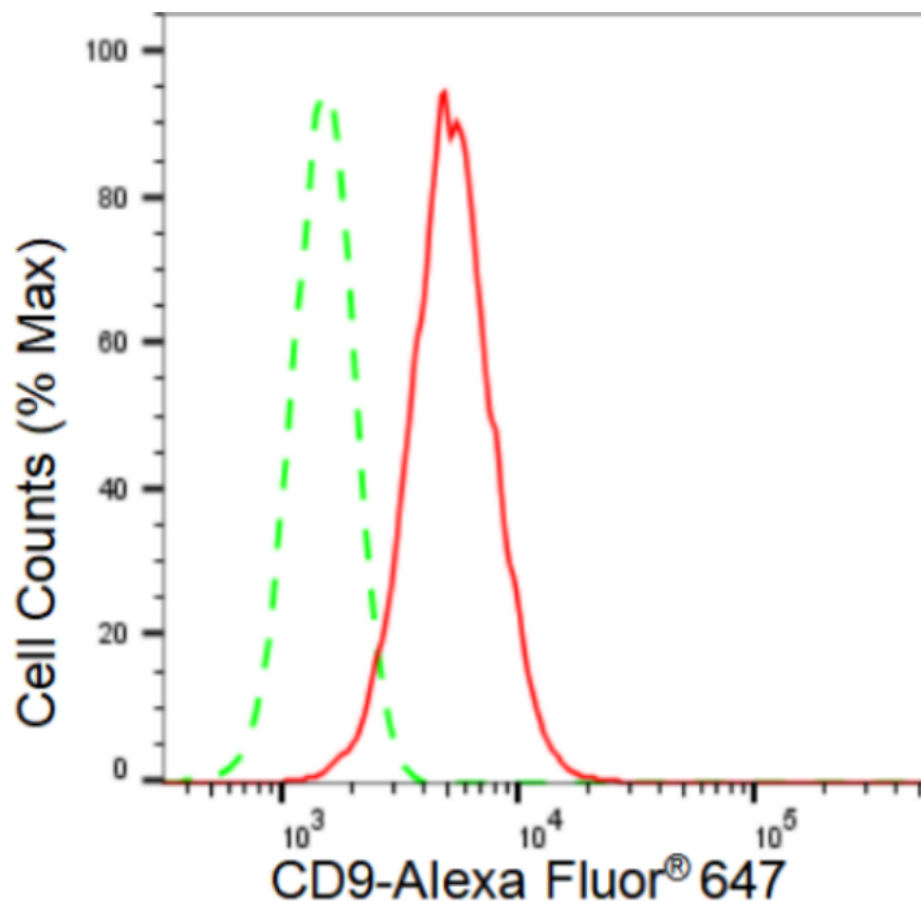
WWW.GENUINBIOTECH.COM

Anti-CD9 Recombinant Rabbit Monoclonal Antibody

PAGE 2

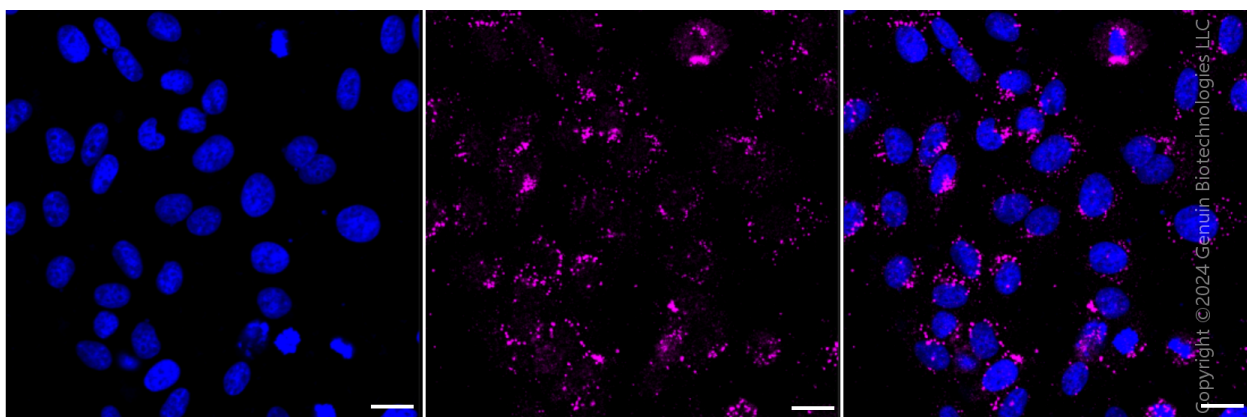
Note: This product is for research use only.

Validation Data



Copyright ©2024 Genuin Biotechnologies LLC

Flow cytometric analysis of CD9 expression in HepG2 cells using CD9 antibody (Cat#1359, 1:2,000). Green, isotype control; red, CD9.



Copyright ©2024 Genuin Biotechnologies LLC

SUPPORT

SUPPORT@GENUINBIOTECH.COM
TEL: +1-540-855-7041

ORDERS

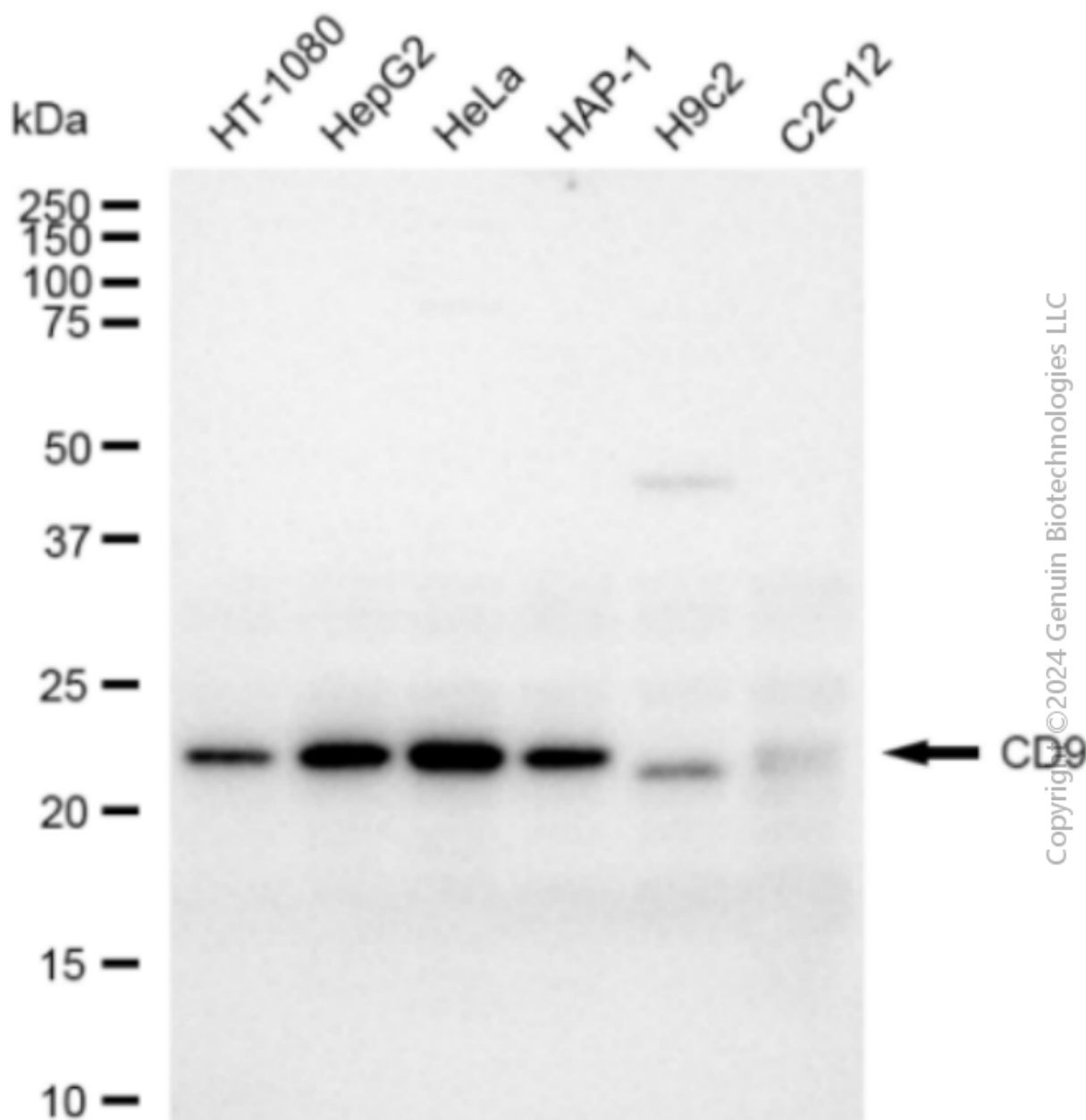
SALES@GENUINBIOTECH.COM
FAX: +1-540-855-7041

WWW.GENUINBIOTECH.COM

Anti-CD9 Recombinant Rabbit Monoclonal Antibody

PAGE 3

Medium. Scale bar: 20 μ m.



Western blotting analysis using anti-CD9 antibody (Cat#1359). Total cell lysates (30 μ g) from various cell lines were loaded and separated by SDS-PAGE. The blot was incubated with anti-CD9 antibody (Cat#1359, 1:5,000) and HRP-conjugated goat anti-rabbit secondary antibody (Cat#201, 1:20,000) respectively. Image was developed using FeQTM ECL Substrate Kit (Cat#226).

SUPPORT

SUPPORT@GENUINBIOTECH.COM
TEL: +1-540-855-7041

ORDERS

SALES@GENUINBIOTECH.COM
FAX: +1-540-855-7041

WWW.GENUINBIOTECH.COM