

Anti-Crystallin alpha B Recombinant Rabbit Monoclonal Antibody



Catalog #: 1397

Aliases

CRYAB; Crystallin Alpha B; HSPB5; CRYA2; Renal Carcinoma Antigen NY-REN-27; Heat Shock Protein Beta-5; Rosenthal Fiber Component; Alpha-Crystallin B Chain; Epididymis Secretory Protein Li 101; Heat-Shock 20 KD Like-Protein; Crystallin, Alpha B; Alpha(B)-Crystallin; HEL-S-101; CTRCT16; CMD1II; CTPP2; HspB5; MFM2

Background

Gene Name: CRYAB

NCBI Gene Entry: [1410](#)

UniProt Entry: [P02511](#)

Application Information

Molecular Weight: Predicted, 20 kDa; observed, 19 kDa

Clonality: Rabbit monoclonal antibody

Clone ID: 23GB3500

Species Reactivity: Rat

Applications Tested: Western blotting (WB), flow cytometry (FCM), immunocytochemistry (IC)

Immunogen

A synthesized peptide derived from human CRYAB

Isotype

Rabbit IgG

Storage Buffer

Supplied in PBS (pH 7.4) containing 50% glycerol, and 0.02% sodium azide.

Storage

Store at -20 °C for one year.

Recommended Dilutions

Western Blotting (WB): 1:1,000-1:5,000

Flow Cytometry (FCM): 1:2,000

Immunocytochemistry (IC): 1:100-1:1,000

SUPPORT

SUPPORT@GENUINBIOTECH.COM
TEL: +1-540-855-7041

ORDERS

SALES@GENUINBIOTECH.COM
FAX: +1-540-855-7041

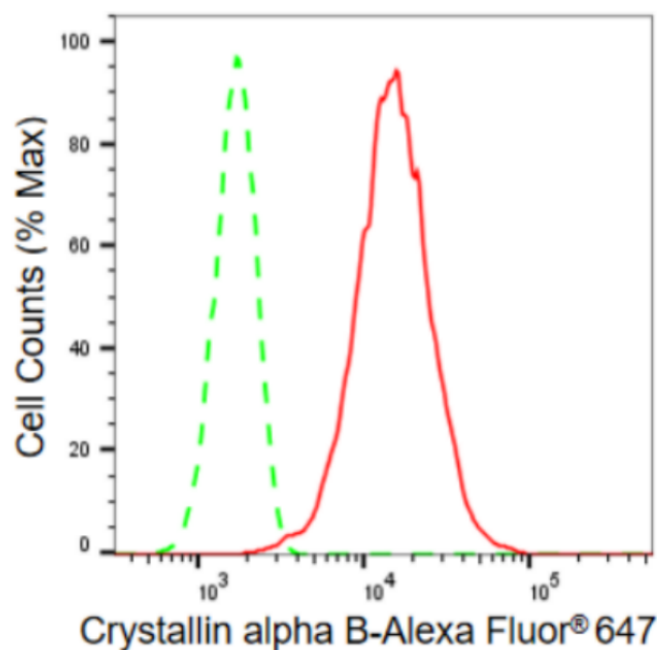
WWW.GENUINBIOTECH.COM

Anti-Crystallin alpha B Recombinant Rabbit Monoclonal Antibody

PAGE 2

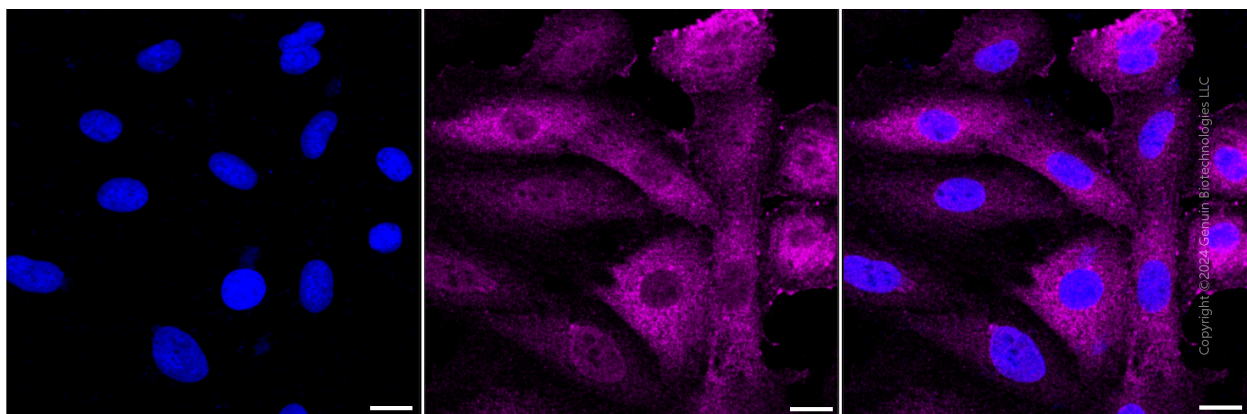
Note: This product is for research use only.

Validation Data



Copyright ©2024 Genuin Biotechnologies LLC

Flow cytometric analysis of Crystallin alpha B expression in H9c2 cells using Crystallin alpha B antibody (Cat#1397, 1:2,000). Green, isotype control; red, Crystallin alpha B.



Copyright ©2024 Genuin Biotechnologies LLC

Immunocytochemical staining of HT-1080 cells with Crystallin alpha B antibody (Cat#1397, 1:1,000). Nuclei were stained blue with DAPI; Crystallin alpha B was stained magenta with Alexa Fluor® 647. Images were taken using Leica stellaris 5. Protein abundance based on laser Intensity and smart gain: Medium. Scale bar: 20 μ m.

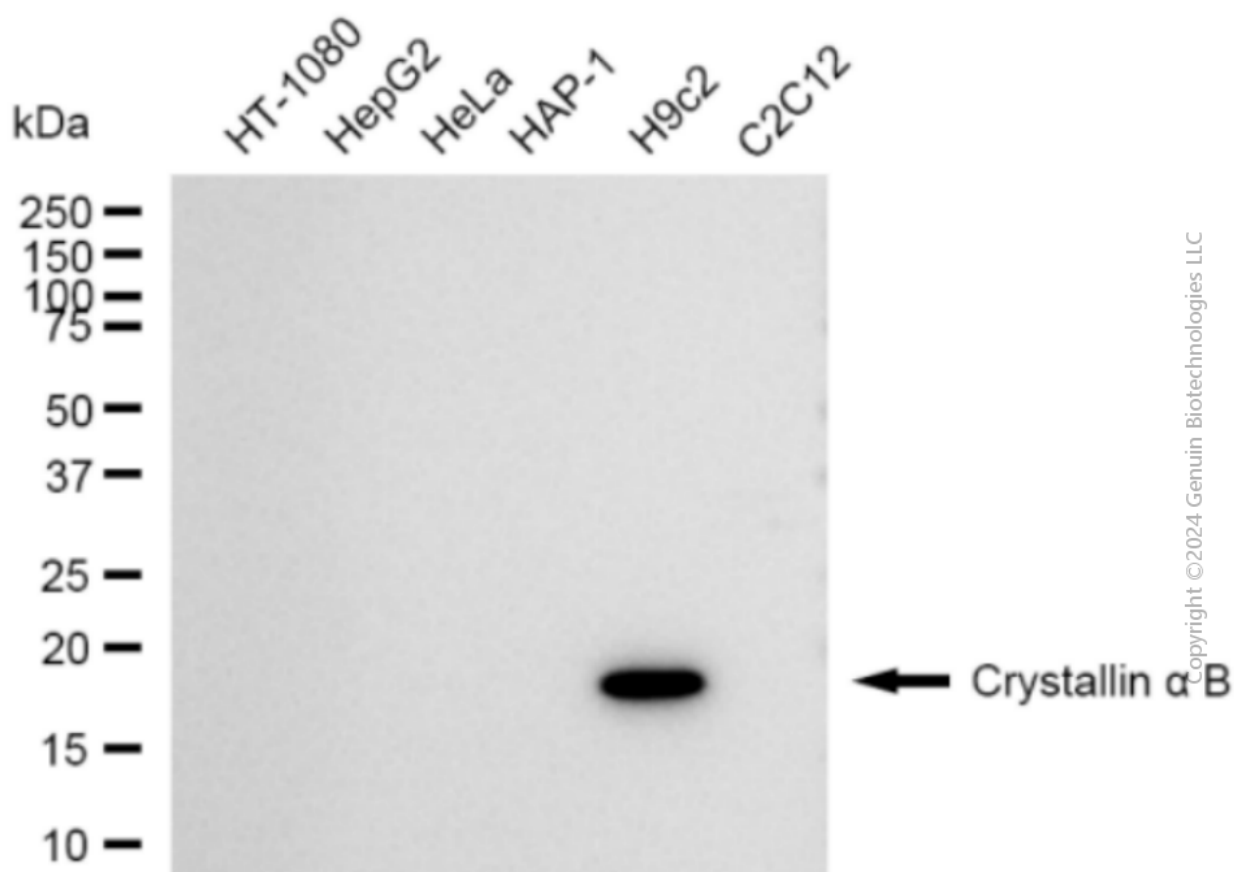
SUPPORT

SUPPORT@GENUINBIOTECH.COM
TEL: +1-540-855-7041

ORDERS

SALES@GENUINBIOTECH.COM
FAX: +1-540-855-7041

WWW.GENUINBIOTECH.COM



Western blotting analysis using anti-Crystallin alpha B antibody (Cat#1397). Total cell lysates (30 µg) from various cell lines were loaded and separated by SDS-PAGE. The blot was incubated with anti-Crystallin alpha B antibody (Cat#1397, 1:5,000) and HRP-conjugated goat anti-rabbit secondary antibody (Cat#201, 1:20,000) respectively. Image was developed using FeQ™ ECL Substrate Kit (Cat#226).