

Anti-DDR2 Recombinant Rabbit Monoclonal Antibody



Catalog #: 1401

Aliases

DDR2; Discoidin Domain Receptor Tyrosine Kinase 2; TKT; NTRKR3; TYRO10; Discoidin Domain-Containing Receptor Tyrosine Kinase 2; Discoidin Domain Receptor Family, Member 2; Discoidin Domain-Containing Receptor 2; Receptor Protein-Tyrosine Kinase TKT; CD167 Antigen-Like Family Member B; Tyrosine-Protein Kinase TYRO10; Discoidin Domain Receptor 2; EC 2.7.10.1; Neurotrophic Tyrosine Kinase, Receptor-Related; Neurotrophic Tyrosine Kinase Receptor Related 3; Cell Migration-Inducing Protein 20; Migration-Inducing Gene 16 Protein; Hydroxyaryl-Protein Kinase; CD167b Antigen; EC 2.7.10; MIG20a; WRCN

Background

Gene Name: DDR2

NCBI Gene Entry: [4921](#)

UniProt Entry: [Q16832](#)

Application Information

Molecular Weight: Predicted, 97 kDa; observed, 97 kDa

Clonality: Rabbit monoclonal antibody

Clone ID: 23GB3545

Species Reactivity: Human, mouse, rat

Applications Tested: Western blotting (WB), immunocytochemistry (IC)

Immunogen

A synthesized peptide derived from human DDR2

Isotype

Rabbit IgG

Storage Buffer

Supplied in PBS (pH 7.4) containing 50% glycerol, and 0.02% sodium azide.

Storage

Store at -20 °C for one year.

Recommended Dilutions

Western Blotting (WB): 1:1,000-1:5,000

Immunocytochemistry (IC): 1:100-1:1,000

SUPPORT

SUPPORT@GENUINBIOTECH.COM
TEL: +1-540-855-7041

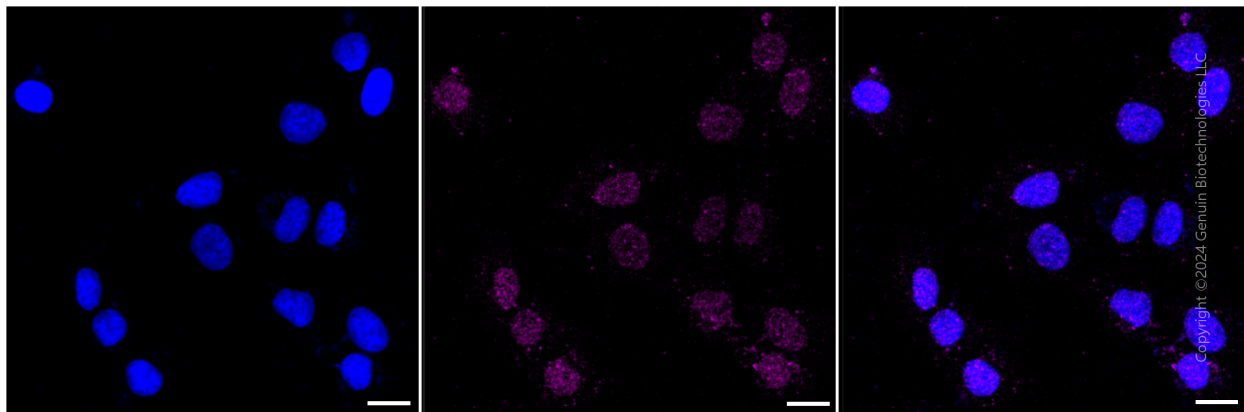
ORDERS

SALES@GENUINBIOTECH.COM
FAX: +1-540-855-7041

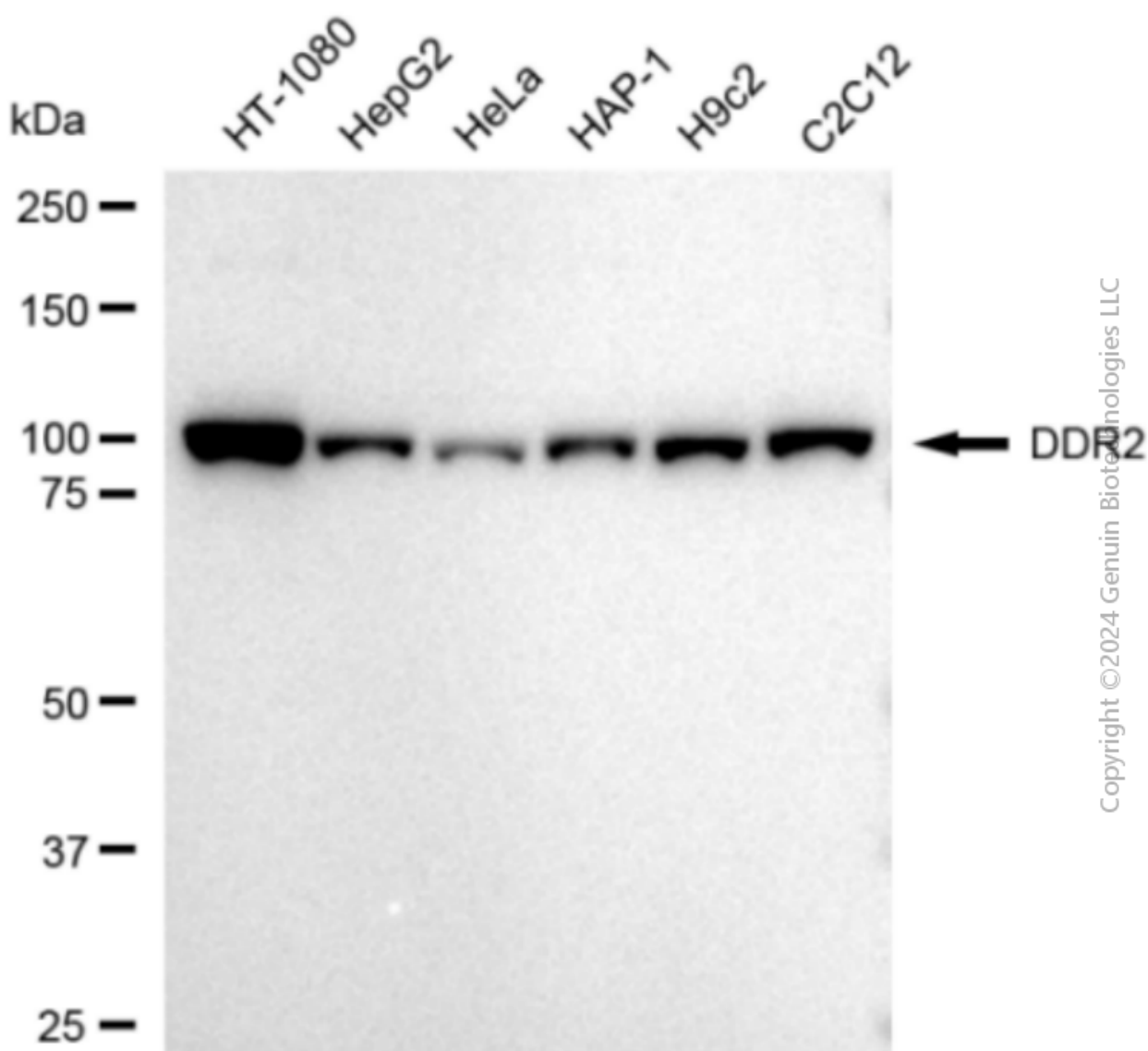
WWW.GENUINBIOTECH.COM

Note: This product is for research use only.

Validation Data



Immunocytochemical staining of HT-1080 cells with DDR2 antibody (Cat#1401, 1:1,000). Nuclei were stained blue with DAPI; DDR2 was stained magenta with Alexa Fluor® 647. Images were taken using Leica stellaris 5. Protein abundance based on laser Intensity and smart gain: Very low. Scale bar: 20 μ m.



Copyright ©2024 Genuin Biotechnologies LLC

Western blotting analysis using anti-DDR2 antibody (Cat#1401). Total cell lysates (30 µg) from various cell lines were loaded and separated by SDS-PAGE. The blot was incubated with anti-DDR2 antibody (Cat#1401, 1:5,000) and HRP-conjugated goat anti-rabbit secondary antibody (Cat#201, 1:20,000) respectively. Image was developed using FeQ™ ECL Substrate Kit (Cat#226).