

Anti-Collapsin response mediator protein 1 Recombinant Rabbit Monoclonal Antibody



Catalog #: 1415

Aliases

CRMP1; Collapsin Response Mediator Protein 1; DPYSL1; DRP-1; Dihydropyrimidinase-Related Protein 1; Inactive Dihydropyrimidinase; Unc-33-Like Phosphoprotein 3; CRMP-1; ULIP-3; Dihydropyrimidinase-Like 1; ULIP3; DRP1

Background

Gene Name: CRMP1

NCBI Gene Entry: [1400](#)

UniProt Entry: [Q14194](#)

Application Information

Molecular Weight: Predicted, 62 kDa; observed, 62 kDa

Clonality: Rabbit monoclonal antibody

Clone ID: 23GB3480

Species Reactivity: Human

Applications Tested: Western blotting (WB), flow cytometry (FCM), immunocytochemistry (IC)

Immunogen

A synthesized peptide derived from human CRMP1

Isotype

Rabbit IgG

Storage Buffer

Supplied in PBS (pH 7.4) containing 50% glycerol, and 0.02% sodium azide.

Storage

Store at -20 °C for one year.

Recommended Dilutions

Western Blotting (WB): 1:1,000-1:5,000

Flow Cytometry (FCM): 1:2,000

Immunocytochemistry (IC): 1:100-1:1,000

Note: This product is for research use only.

SUPPORT

SUPPORT@GENUINBIOTECH.COM
TEL: +1-540-855-7041

ORDERS

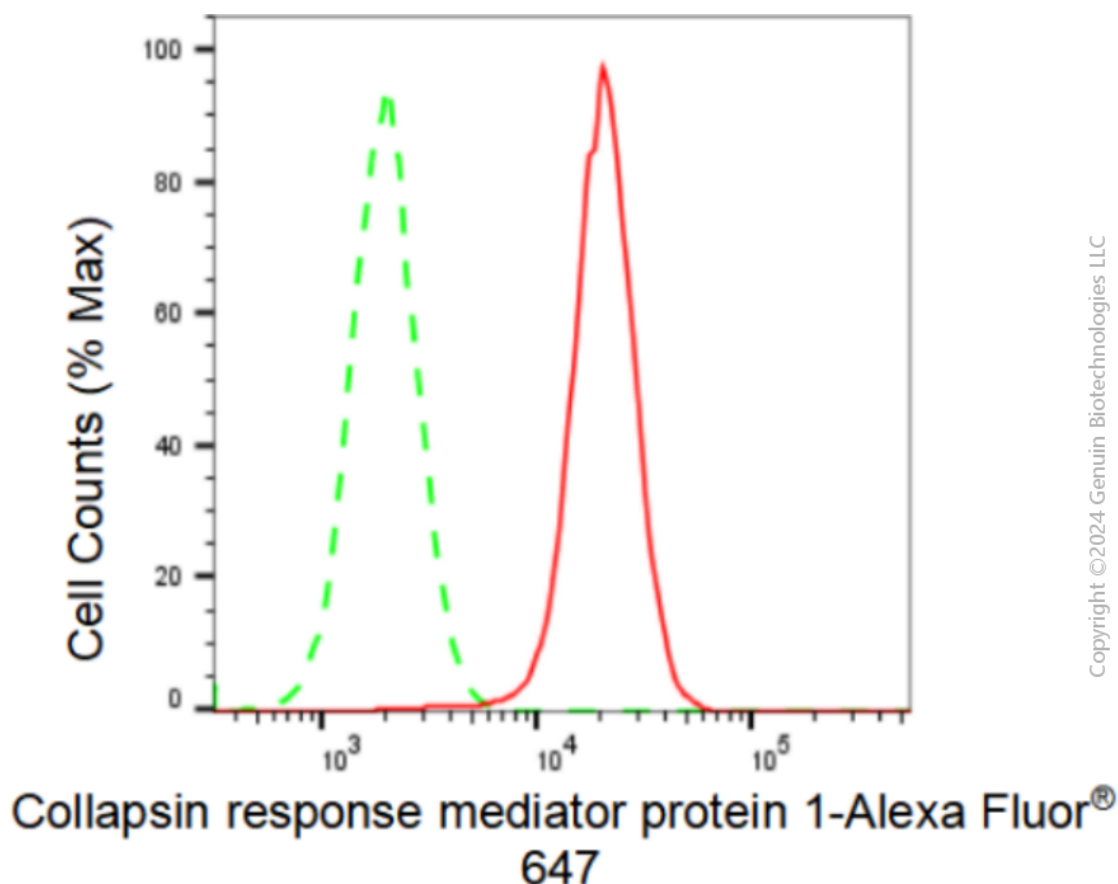
SALES@GENUINBIOTECH.COM
FAX: +1-540-855-7041

WWW.GENUINBIOTECH.COM

Anti-Collapsin response mediator protein 1 Recombinant Rabbit Monoclonal Antibody

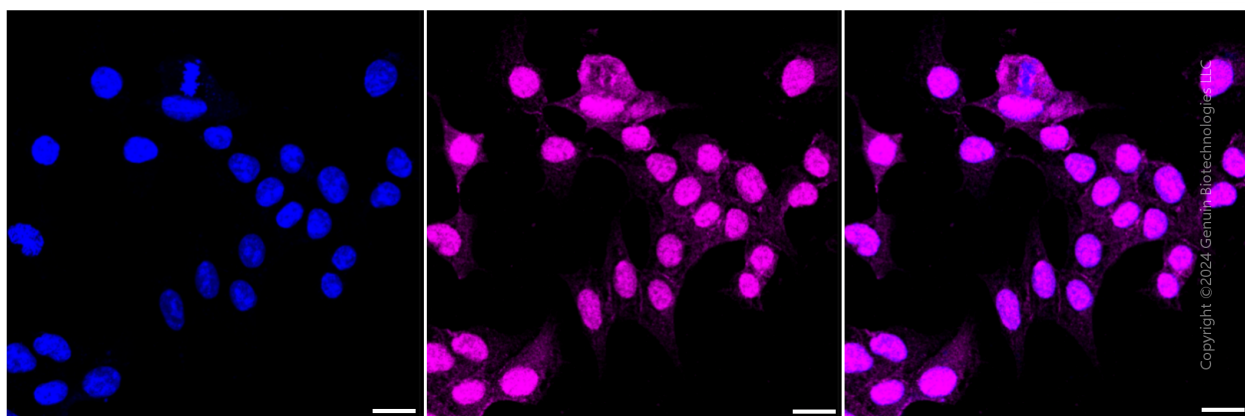
PAGE 2

Validation Data



Copyright ©2024 Genuin Biotechnologies LLC

Flow cytometric analysis of Collapsin response mediator protein 1 expression in HAP-1 cells using Collapsin response mediator protein 1 antibody (Cat#1415, 1:2,000). Green, isotype control; red, Collapsin response mediator protein 1.



Copyright ©2024 Genuin Biotechnologies LLC

Immunocytochemical staining of HAP-1 cells with Collapsin response mediator protein 1 antibody (Cat#1415, 1:1,000). Nuclei were stained blue with DAPI; Collapsin response mediator protein 1 was stained magenta with Alexa Fluor® 647. Images were taken using Leica stellaris 5. Protein abundance based on laser Intensity and smart gain: Medium. Scale bar: 20 μ m.

SUPPORT

SUPPORT@GENUINBIOTECH.COM
TEL: +1-540-855-7041

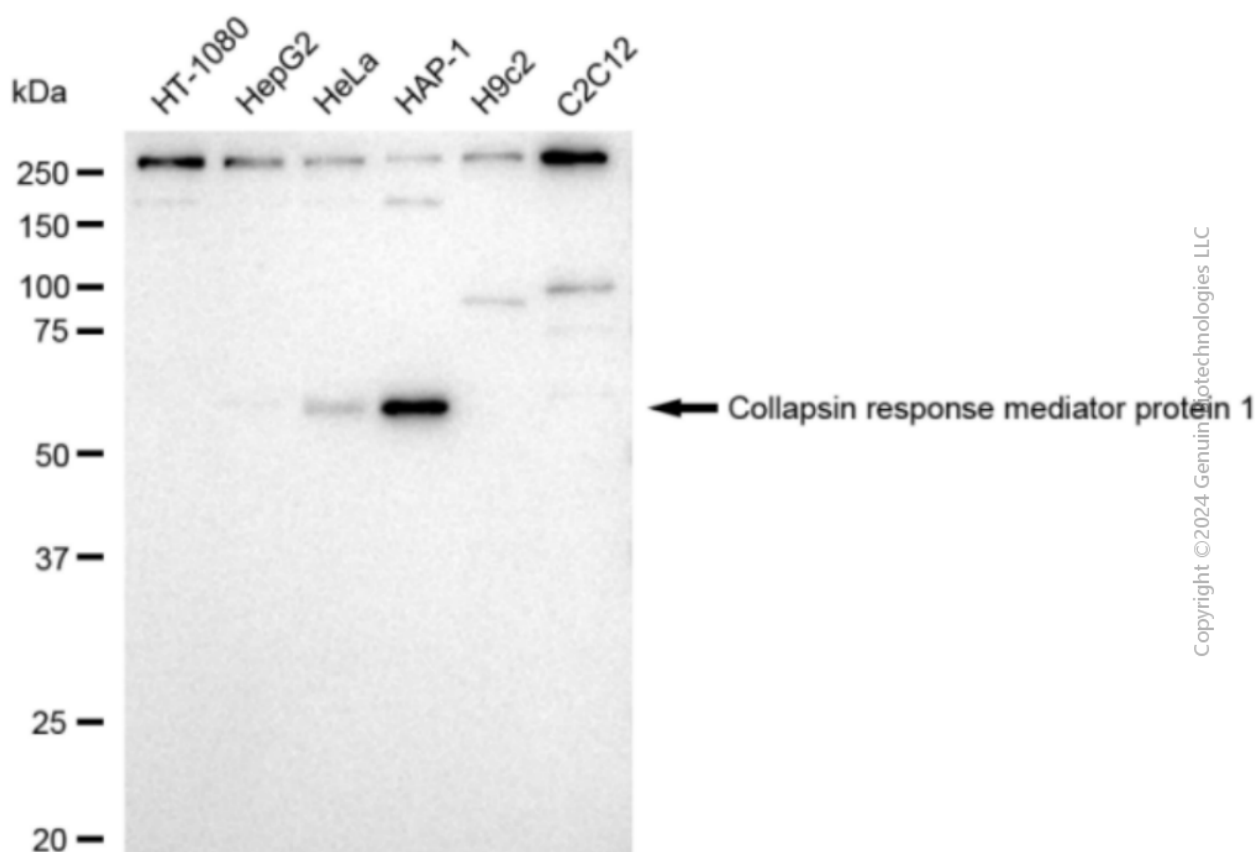
ORDERS

SALES@GENUINBIOTECH.COM
FAX: +1-540-855-7041

WWW.GENUINBIOTECH.COM

Anti-Collapsin response mediator protein 1 Recombinant Rabbit Monoclonal Antibody

PAGE 3



Western blotting analysis using anti-Collapsin response mediator protein 1 antibody (Cat#1415). Total cell lysates (30 μ g) from various cell lines were loaded and separated by SDS-PAGE. The blot was incubated with anti-Collapsin response mediator protein 1 antibody (Cat#1415, 1:5,000) and HRP-conjugated goat anti-rabbit secondary antibody (Cat#201, 1:20,000) respectively. Image was developed using FeQ™ ECL Substrate Kit (Cat#226).

SUPPORT

SUPPORT@GENUINBIOTECH.COM
TEL: +1-540-855-7041

ORDERS

SALES@GENUINBIOTECH.COM
FAX: +1-540-855-7041

WWW.GENUINBIOTECH.COM