

# Anti-CPEB1 Recombinant Rabbit Monoclonal Antibody



**Catalog #: 1418**

## Aliases

CPEB1; Cytoplasmic Polyadenylation Element Binding Protein 1; CPEB; Cytoplasmic Polyadenylation Element-Binding Protein 1; CPE-Binding Protein 1; FLJ13203; CPE-BP1; HCPEB-1; H-CPEB; CPEB-1

## Background

Gene Name: CPEB1

NCBI Gene Entry: [64506](#)

UniProt Entry: [Q9BZB8](#)

## Application Information

Molecular Weight: Predicted, 63 kDa; observed, 70 kDa

Clonality: Rabbit monoclonal antibody

Clone ID: 23GB3495

Species Reactivity: Human, mouse, rat

Applications Tested: Western blotting (WB), flow cytometry (FCM), immunocytochemistry (IC)

## Immunogen

A synthesized peptide derived from human CPEB1

## Isotype

Rabbit IgG

## Storage Buffer

Supplied in PBS (pH 7.4) containing 50% glycerol, and 0.02% sodium azide.

## Storage

Store at -20 °C for one year.

## Recommended Dilutions

Western Blotting (WB): 1:1,000-1:5,000

Flow Cytometry (FCM): 1:2,000

Immunocytochemistry (IC): 1:100-1:1,000

**Note:** This product is for research use only.

---

### SUPPORT

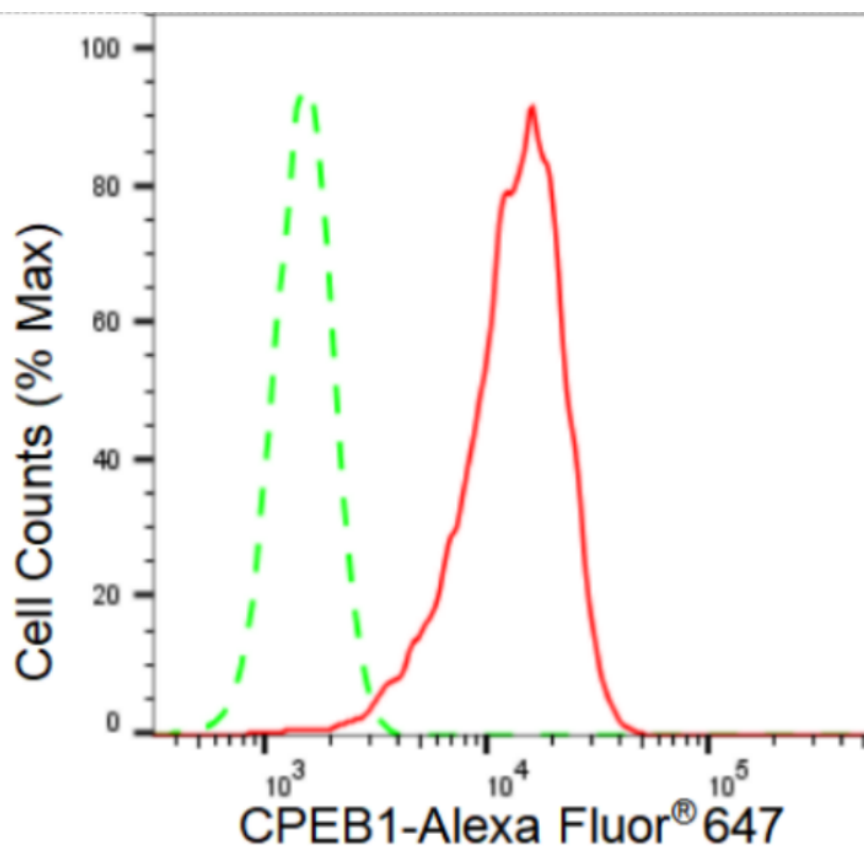
SUPPORT@GENUINBIOTECH.COM  
TEL: +1-540-855-7041

### ORDERS

SALES@GENUINBIOTECH.COM  
FAX: +1-540-855-7041

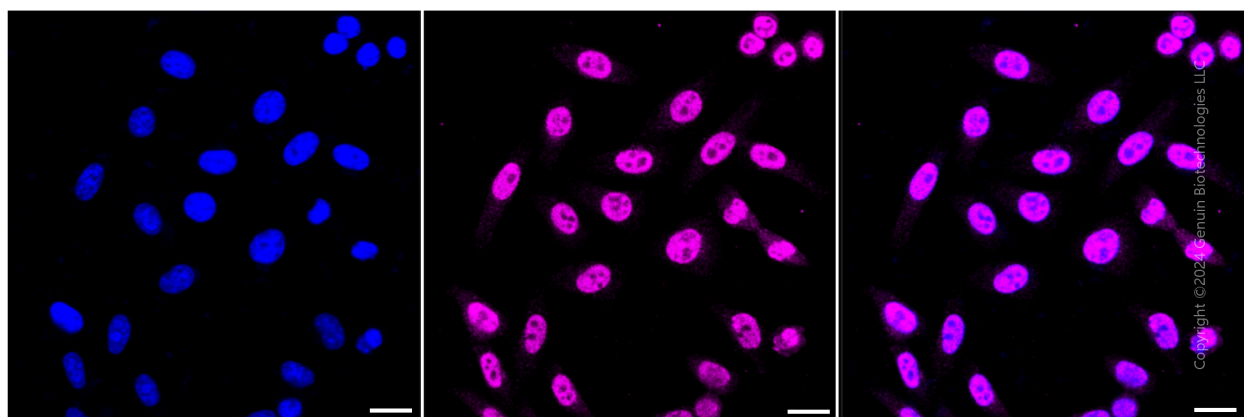
[WWW.GENUINBIOTECH.COM](http://WWW.GENUINBIOTECH.COM)

## Validation Data



Copyright ©2024 Genuin Biotechnologies LLC

Flow cytometric analysis of CPEB1 expression in HepG2 cells using CPEB1 antibody (Cat#1418, 1:2,000). Green, isotype control; red, CPEB1.



Copyright ©2024 Genuin Biotechnologies LLC

Immunocytochemical staining of HepG2 cells with CPEB1 antibody (Cat#1418, 1:1,000). Nuclei were stained blue with DAPI; CPEB1 was stained magenta with Alexa Fluor® 647. Images were taken using Leica stellaris 5. Protein abundance based on laser Intensity and smart gain: High. Scale bar: 20 μm.

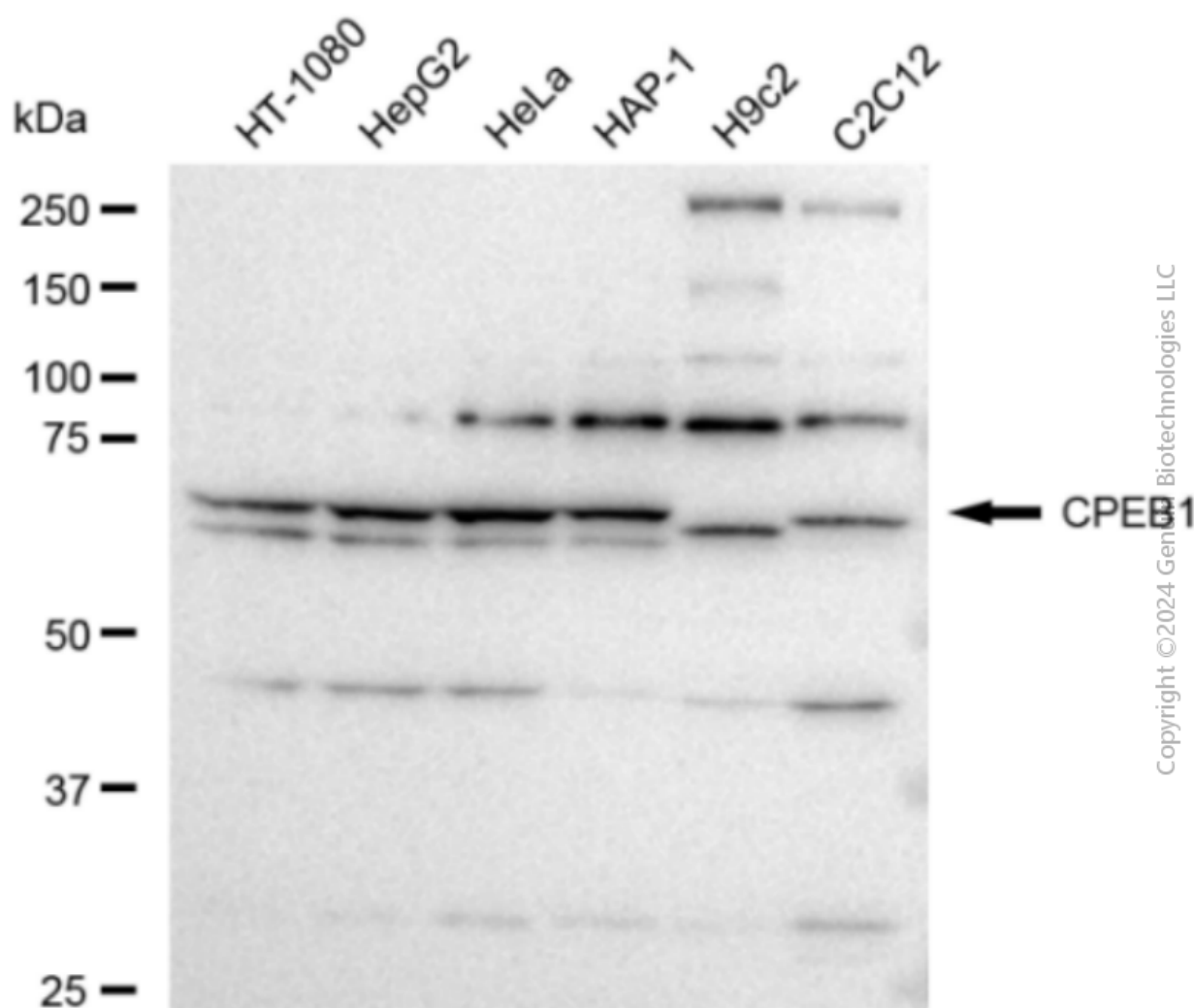
### SUPPORT

SUPPORT@GENUINBIOTECH.COM  
TEL: +1-540-855-7041

### ORDERS

SALES@GENUINBIOTECH.COM  
FAX: +1-540-855-7041

WWW.GENUINBIOTECH.COM



Western blotting analysis using anti-CPEB1 antibody (Cat#1418). Total cell lysates (30  $\mu$ g) from various cell lines were loaded and separated by SDS-PAGE. The blot was incubated with anti-CPEB1 antibody (Cat#1418, 1:5,000) and HRP-conjugated goat anti-rabbit secondary antibody (Cat#201, 1:20,000) respectively. Image was developed using FeQ™ ECL Substrate Kit (Cat#226). CPEB1, cytoplasmic polyadenylation element binding protein 1.