

# Anti-COPA Recombinant Rabbit Monoclonal Antibody



**Catalog #: 1423**

## Aliases

COPA; COPI Coat Complex Subunit Alpha; HEP-COP; Coatomer Subunit Alpha; Alpha-COP; Proxenin; Xenin; Coatomer Protein Complex, Subunit Alpha; Coatomer Protein Complex Subunit Alpha; Alpha Coat Protein; Alpha-Coat Protein; HEPCOP; AILJK

## Background

Gene Name: COPA

NCBI Gene Entry: [1314](#)

UniProt Entry: [P53621](#)

## Application Information

Molecular Weight: Predicted, 138 kDa; observed, 145 kDa

Clonality: Rabbit monoclonal antibody

Clone ID: 23GB3485

Species Reactivity: Human, mouse, rat

Applications Tested: Western blotting (WB), immunocytochemistry (IC)

## Immunogen

A synthesized peptide derived from human COPA

## Isotype

Rabbit IgG

## Storage Buffer

Supplied in PBS (pH 7.4) containing 50% glycerol, and 0.02% sodium azide.

## Storage

Store at -20 °C for one year.

## Recommended Dilutions

Western Blotting (WB): 1:1,000-1:5,000

Immunocytochemistry (IC): 1:100-1:1,000

**Note:** This product is for research use only.

## Validation Data

---

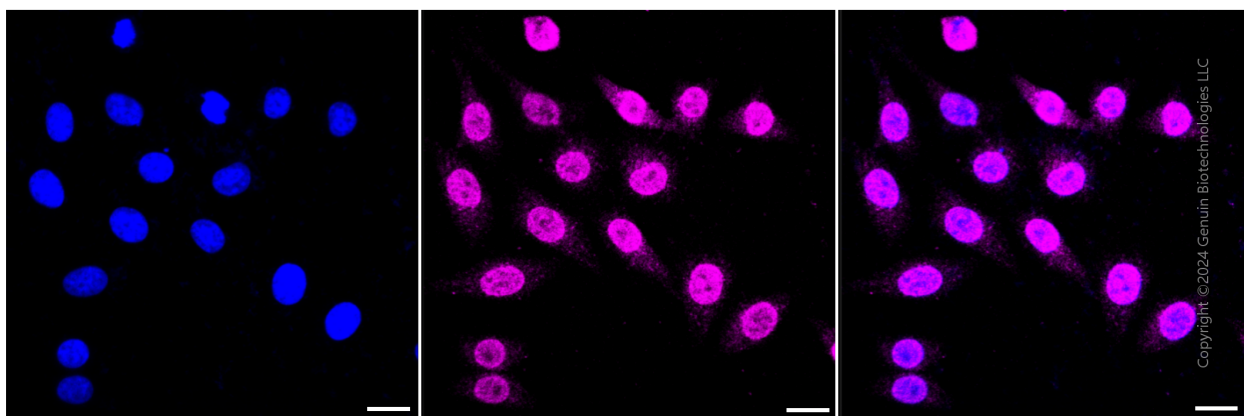
### SUPPORT

SUPPORT@GENUINBIOTECH.COM  
TEL: +1-540-855-7041

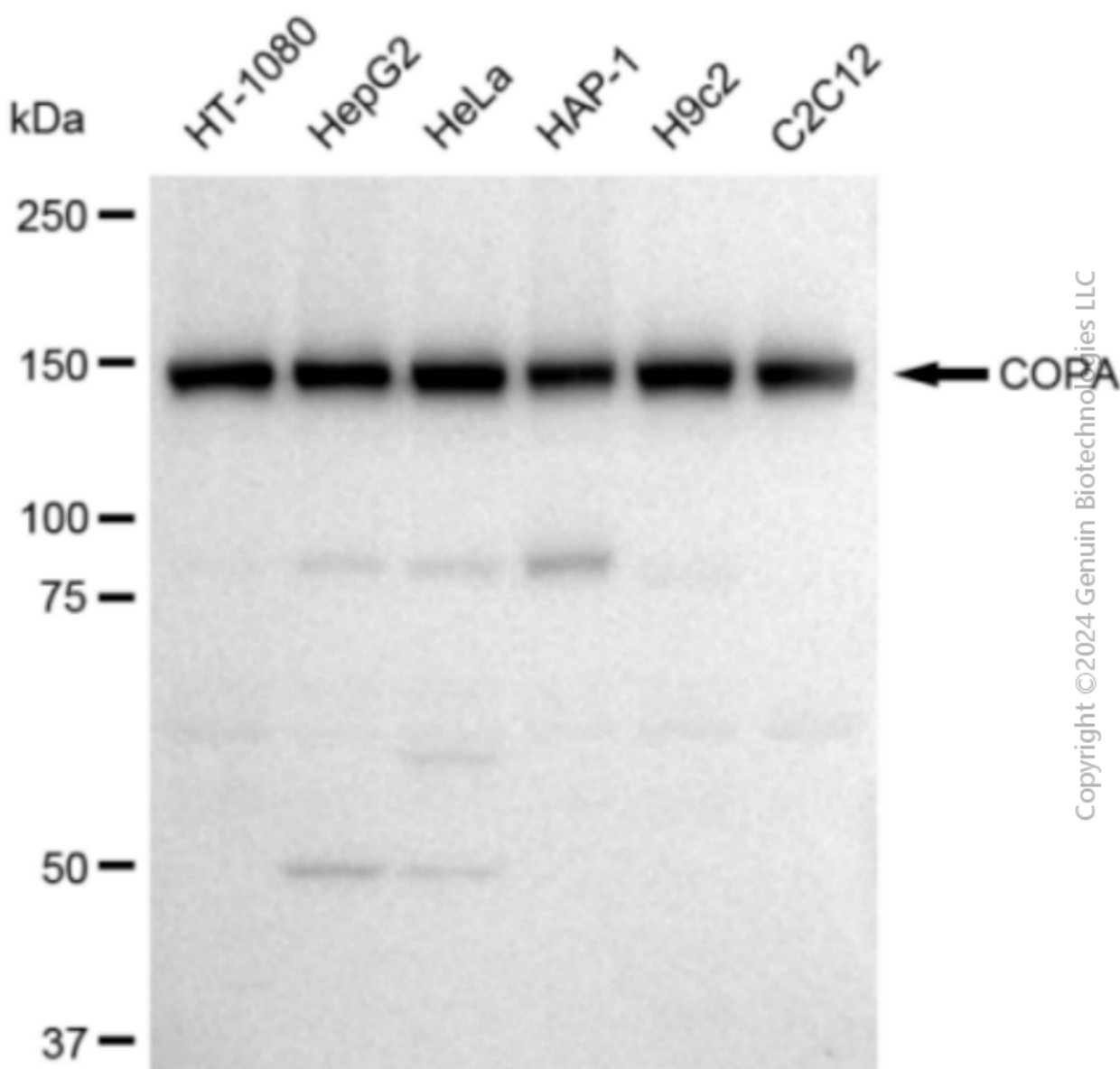
### ORDERS

SALES@GENUINBIOTECH.COM  
FAX: +1-540-855-7041

[WWW.GENUINBIOTECH.COM](http://WWW.GENUINBIOTECH.COM)



Immunocytochemical staining of HepG2 cells with COPA antibody (Cat#1423, 1:1,000). Nuclei were stained blue with DAPI; COPA was stained magenta with Alexa Fluor® 647. Images were taken using Leica stellaris 5. Protein abundance based on laser Intensity and smart gain: Low. Scale bar: 20  $\mu$ m.



Copyright ©2024 Genuin Biotechnologies LLC

Western blotting analysis using anti-COPA antibody (Cat#1423). Total cell lysates (30 µg) from various cell lines were loaded and separated by SDS-PAGE. The blot was incubated with anti-COPA antibody (Cat#1423, 1:5,000) and HRP-conjugated goat anti-rabbit secondary antibody (Cat#201, 1:20,000) respectively. Image was developed using FeQ™ ECL Substrate Kit (Cat#226).