

Anti-CHD1L Recombinant Rabbit Monoclonal Antibody



Catalog #: 1424

Aliases

CHD1L; Chromodomain Helicase DNA Binding Protein 1 Like; ALC1; Chromodomain-Helicase-DNA-Binding Protein 1-Like; Amplified In Liver Cancer Protein 1; Amplified In Liver Cancer 1; EC 3.6.4.-; EC 3.6.1; CHDL

Background

Gene Name: CHD1L

NCBI Gene Entry: [9557](#)

UniProt Entry: [Q86WJ1](#)

Application Information

Molecular Weight: Predicted, 101 kDa; observed, 101 kDa

Clonality: Rabbit monoclonal antibody

Clone ID: 23GB3770

Species Reactivity: Human

Applications Tested: Western blotting (WB), immunocytochemistry (IC), flow cytometry (FCM)

Immunogen

A synthesized peptide derived from human CHD1L

Isotype

Rabbit IgG

Storage Buffer

Supplied in PBS (pH 7.4) containing 50% glycerol, and 0.02% sodium azide.

Storage

Store at -20 °C for one year.

Recommended Dilutions

Western Blotting (WB): 1:1,000-1:5,000

Immunocytochemistry (IC): 1:100-1:1,000

Flow Cytometry (FCM): 1:2,000

Note: This product is for research use only.

SUPPORT

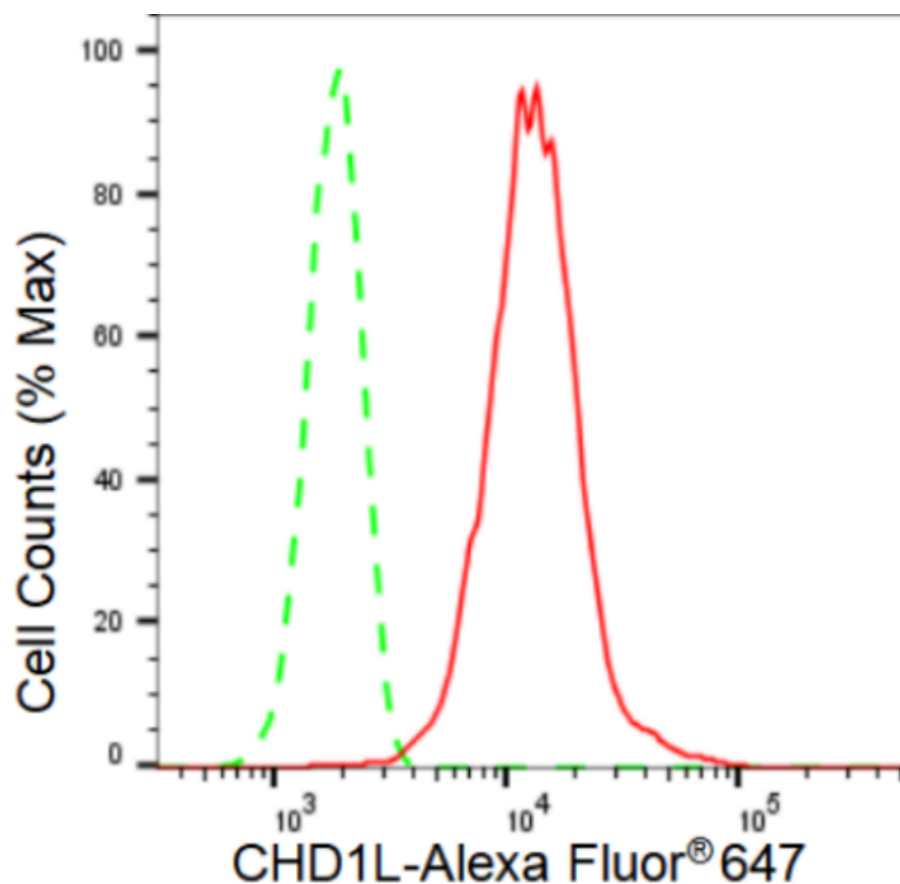
SUPPORT@GENUINBIOTECH.COM
TEL: +1-540-855-7041

ORDERS

SALES@GENUINBIOTECH.COM
FAX: +1-540-855-7041

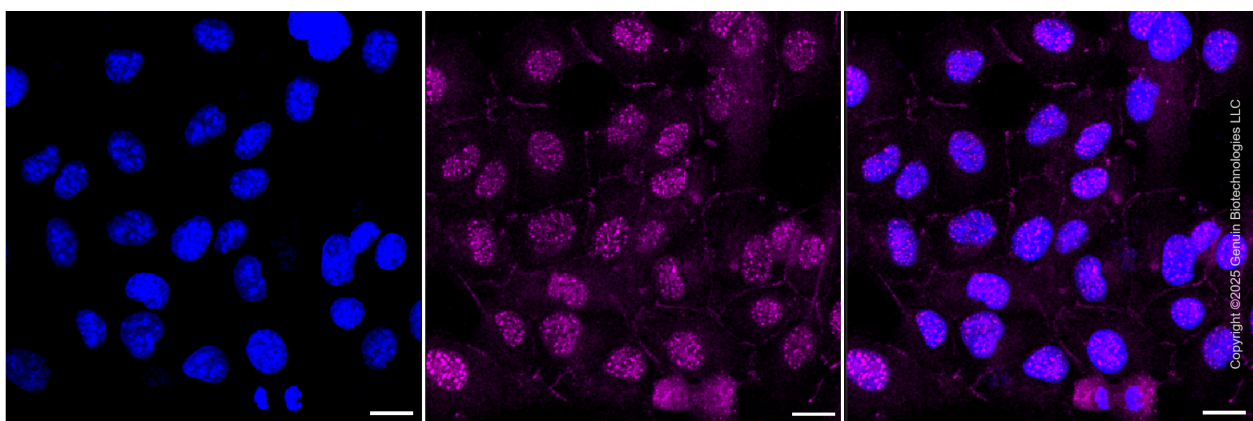
WWW.GENUINBIOTECH.COM

Validation Data



Copyright ©2024 Genuin Biotechnologies LLC

Flow cytometric analysis of CHD1L expression in HT-1080 cells using CHD1L antibody (Cat#1424, 1:2,000). Green, isotype control; red, CHD1L.



Copyright ©2025 Genuin Biotechnologies LLC

Immunocytochemical staining of HT-1080 cells with anti-CHD1L antibody (Cat #1424, 1:1,000) . Nuclei were stained blue with DAPI;CHD1L was stained magenta with Alexa Fluor® 647. Images were taken using Leica stellaris 5. Protein abundance based on laser Intensity and smart gain: Medium. Scale bar, 20 μ m.

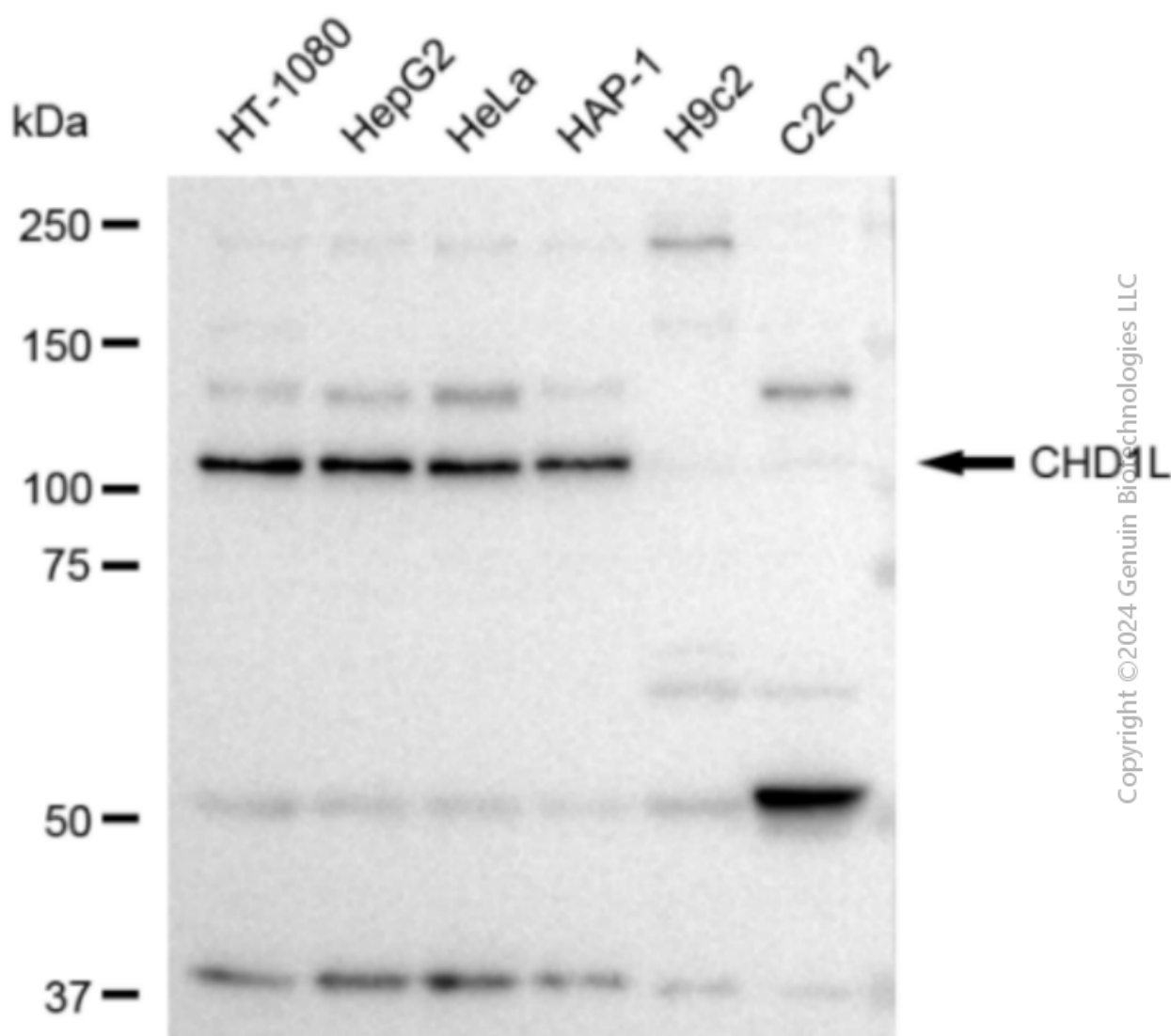
SUPPORT

SUPPORT@GENUINBIOTECH.COM
TEL: +1-540-855-7041

ORDERS

SALES@GENUINBIOTECH.COM
FAX: +1-540-855-7041

WWW.GENUINBIOTECH.COM



Copyright ©2024 Genuin Biotechnologies LLC

Western blotting analysis using anti-CHD1L antibody (Cat#1424). Total cell lysates (30 µg) from various cell lines were loaded and separated by SDS-PAGE. The blot was incubated with anti-CHD1L antibody (Cat#1424, 1:5,000) and HRP-conjugated goat anti-rabbit secondary antibody (Cat#201, 1:20,000) respectively. Image was developed using FeQ™ ECL Substrate Kit (Cat#226). CHD1L, chromodomain helicase DNA binding protein 1 like