

Anti-Bradykinin receptor B2 Recombinant Rabbit Monoclonal Antibody



Catalog #: 1439

Aliases

BDKRB2; Bradykinin Receptor B2; BK-2; B2 Bradykinin Receptor; BK-2 Receptor; BKR2; B2R; BRB2; BK2

Background

Gene Name: BDKRB2

NCBI Gene Entry: [624](#)

UniProt Entry: [P30411](#)

Application Information

Molecular Weight: Predicted, 44 kDa; observed, 75 kDa

Clonality: Rabbit monoclonal antibody

Clone ID: 23GB3710

Species Reactivity: Human, mouse

Applications Tested: Western blotting (WB), flow cytometry (FCM), immunocytochemistry (IC)

Immunogen

A synthesized peptide derived from human BDKRB2

Isotype

Rabbit IgG

Storage Buffer

Supplied in PBS (pH 7.4) containing 50% glycerol, and 0.02% sodium azide.

Storage

Store at -20 °C for one year.

Recommended Dilutions

Western Blotting (WB): 1:1,000-1:5,000

Flow Cytometry (FCM): 1:2,000

Immunocytochemistry (IC): 1:100-1:1,000

Note: This product is for research use only.

Validation Data

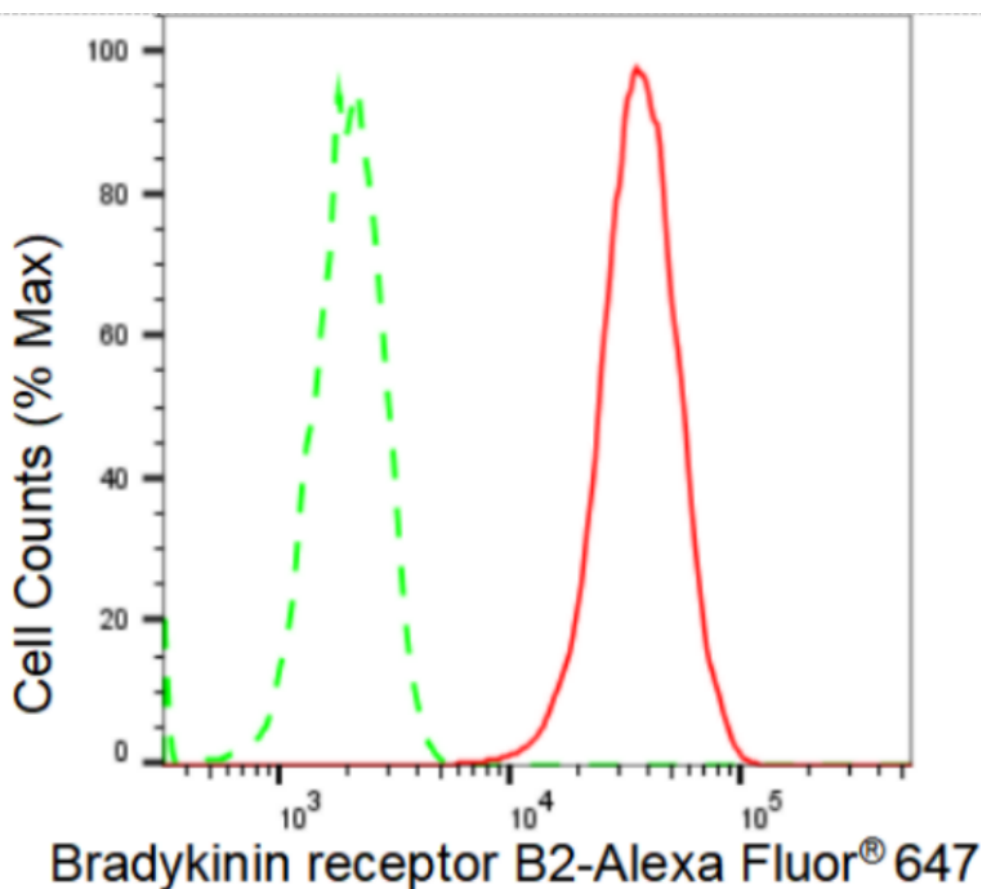
SUPPORT

SUPPORT@GENUINBIOTECH.COM
TEL: +1-540-855-7041

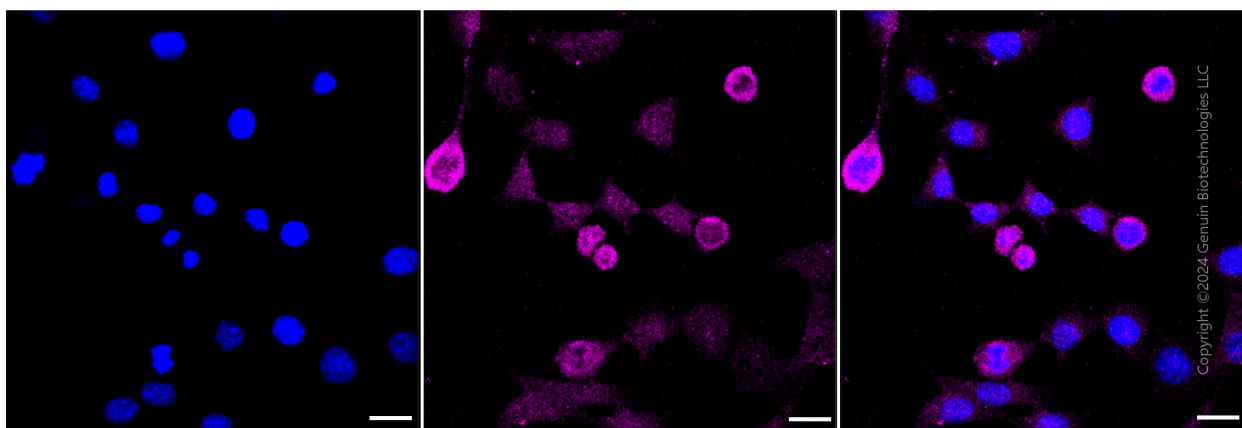
ORDERS

SALES@GENUINBIOTECH.COM
FAX: +1-540-855-7041

WWW.GENUINBIOTECH.COM



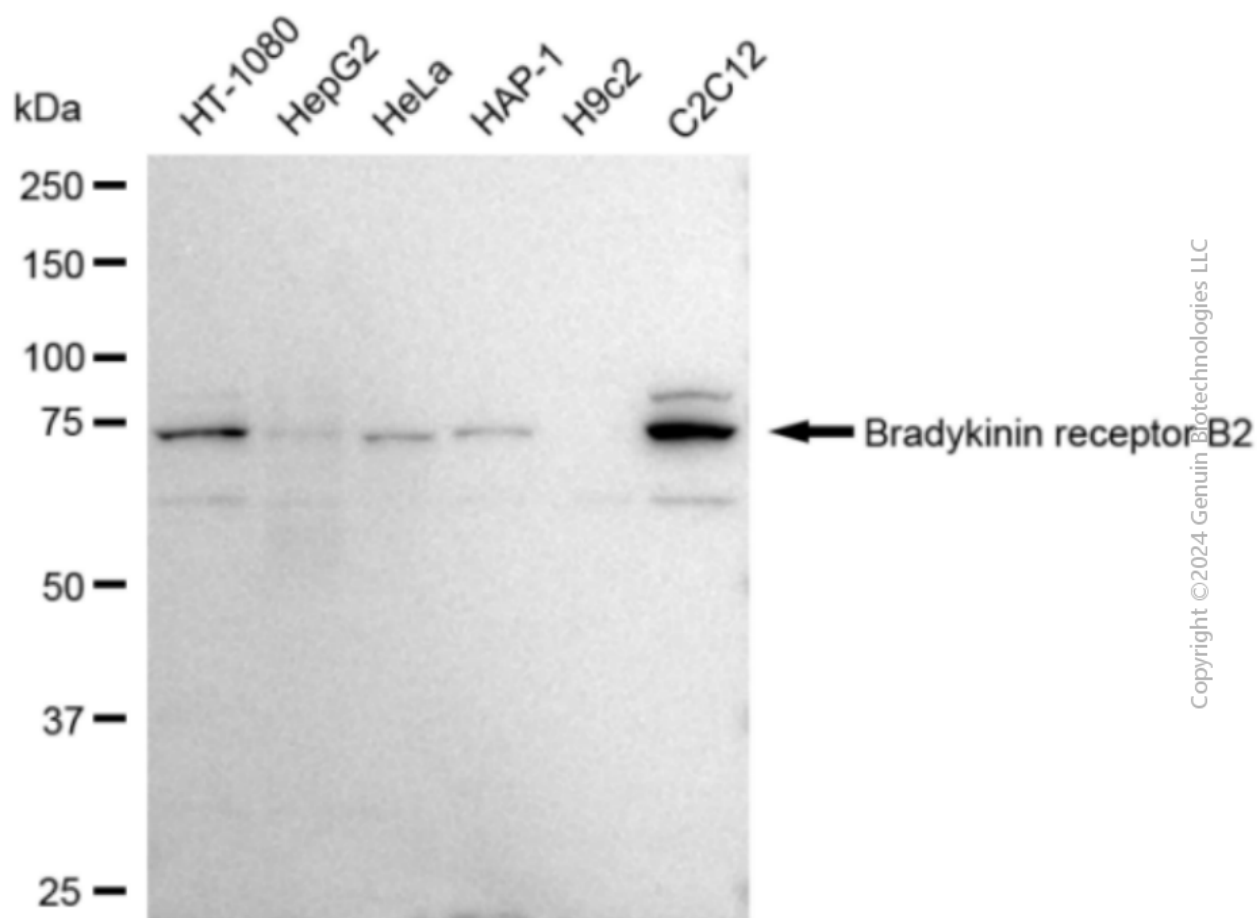
Flow cytometric analysis of Bradykinin receptor B2 expression in C2C12 cells using Bradykinin receptor B2 antibody (Cat#1439, 1:2000). Green, isotype control; red, Bradykinin receptor B2.



Immunocytochemical staining of C2C12 cells with Bradykinin receptor B2 antibody (Cat#1439, 1:1,000). Nuclei were stained blue with DAPI; Bradykinin receptor B2 was stained magenta with Alexa Fluor® 647. Images were taken using Leica stellaris 5. Protein abundance based on laser Intensity and smart gain: Medium. Scale bar: 20 μ m.

Anti-Bradykinin receptor B2 Recombinant Rabbit Monoclonal Antibody

PAGE 3



Western blotting analysis using anti-Bradykinin receptor B2 antibody (Cat#1439). Total cell lysates (30 μ g) from various cell lines were loaded and separated by SDS-PAGE. The blot was incubated with anti-Bradykinin receptor B2 antibody (Cat#1439, 1:5,000) and HRP-conjugated goat anti-rabbit secondary antibody (Cat#201, 1:20,000) respectively. Image was developed using FeQ™ ECL Substrate Kit (Cat#226).

SUPPORT

SUPPORT@GENUINBIOTECH.COM
TEL: +1-540-855-7041

ORDERS

SALES@GENUINBIOTECH.COM
FAX: +1-540-855-7041

WWW.GENUINBIOTECH.COM