

# Anti-CYP24A1 Recombinant Rabbit Monoclonal Antibody



**Catalog #: 1448**

## Aliases

CYP24A1; Cytochrome P450 Family 24 Subfamily A Member 1; P450-CC24 ; CYP24; CP24; Cytochrome P450, Subfamily XXIV (Vitamin D 24-Hydroxylase); 1,25-Dihydroxyvitamin D(3) 24-Hydroxylase, Mitochondrial; Cytochrome P450, Family 24, Subfamily A, Polypeptide 1; Vitamin D(3) 24-Hydroxylase; Cytochrome P450 24A1; Cytochrome P450-CC24; LncBCAS1-4\_1; 24-OHase; 1,25-@Dihydroxyvitamin D3 24-Hydroxylase; Exo-Mitochondrial Protein; Vitamin D 24-Hydroxylase; EC 1.14.15.16; LNCBCAS1-4\_1; HCINF1; HCAI

## Background

Gene Name: CYP24A1

NCBI Gene Entry: [1591](#)

UniProt Entry: [Q07973](#)

## Application Information

Molecular Weight: Predicted, 59 kDa; observed, 38 kDa

Clonality: Rabbit monoclonal antibody

Clone ID: 23GB3795

Species Reactivity: Human, mouse, rat

Applications Tested: Western blotting (WB), flow cytometry (FCM), immunocytochemistry (IC)

## Immunogen

A synthesized peptide derived from human CYP24A1

## Isotype

Rabbit IgG

## Storage Buffer

Supplied in PBS (pH 7.4) containing 50% glycerol, and 0.02% sodium azide.

## Storage

Store at -20 °C for one year.

## Recommended Dilutions

Western Blotting (WB): 1:1,000-1:5,000

Flow Cytometry (FCM): 1:2,000

Immunocytochemistry (IC): 1:100-1:1,000

---

### SUPPORT

SUPPORT@GENUINBIOTECH.COM  
TEL: +1-540-855-7041

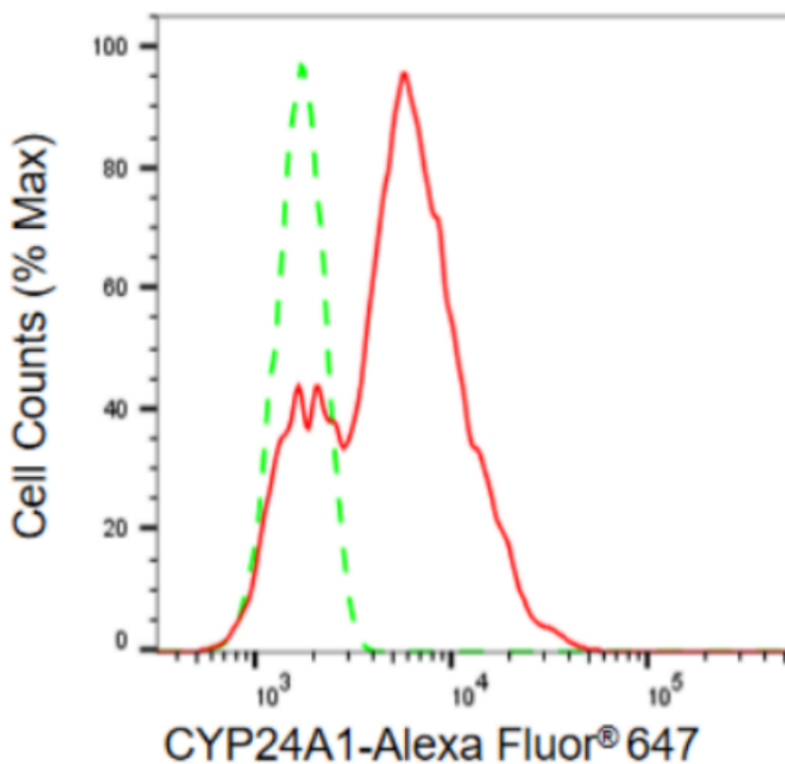
### ORDERS

SALES@GENUINBIOTECH.COM  
FAX: +1-540-855-7041

[WWW.GENUINBIOTECH.COM](http://WWW.GENUINBIOTECH.COM)

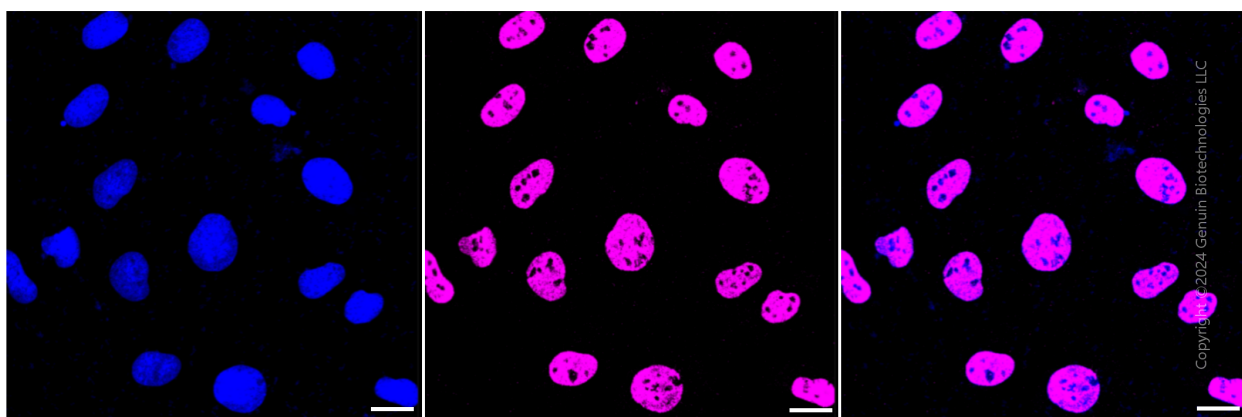
**Note:** This product is for research use only.

## Validation Data



Copyright ©2024 Genuin Biotechnologies LLC

Flow cytometric analysis of CYP24A1 expression in H9c2 cells using CYP24A1 antibody (Cat#1448, 1:2,000). Green, isotype control; red, CYP24A1.



Copyright ©2024 Genuin Biotechnologies LLC

Immunocytochemical staining of H9c2 cells with CYP24A1 antibody (Cat#1448, 1:1,000). Nuclei were stained blue with DAPI; CYP24A1 was stained magenta with Alexa Fluor® 647. Images were taken using Leica stellaris 5. Protein abundance based on laser Intensity and smart gain: High. Scale bar: 20  $\mu$ m.

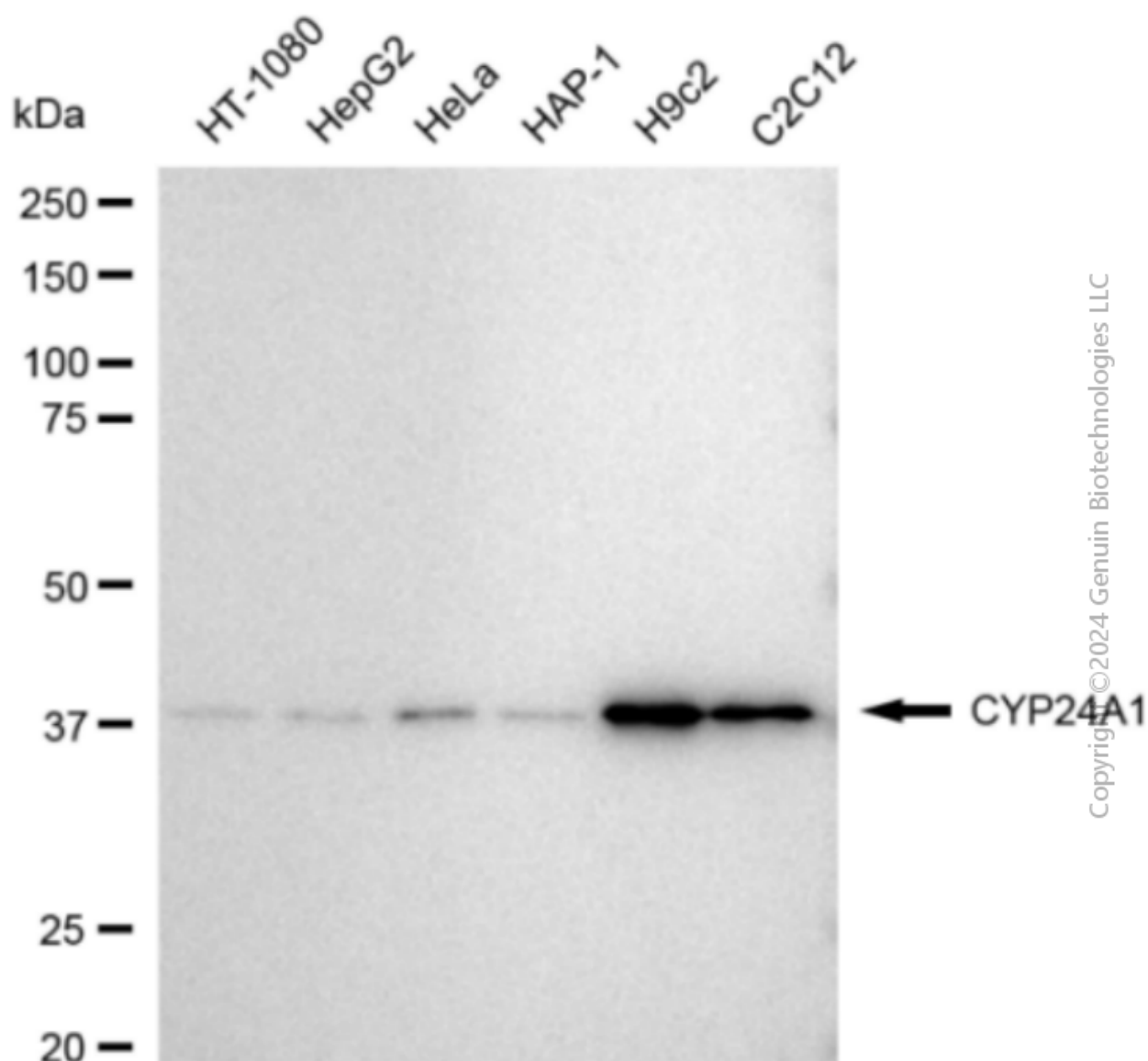
### SUPPORT

SUPPORT@GENUINBIOTECH.COM  
TEL: +1-540-855-7041

### ORDERS

SALES@GENUINBIOTECH.COM  
FAX: +1-540-855-7041

[WWW.GENUINBIOTECH.COM](http://WWW.GENUINBIOTECH.COM)



Western blotting analysis using anti-CYP24A1 antibody (Cat#1448). Total cell lysates (30 µg) from various cell lines were loaded and separated by SDS-PAGE. The blot was incubated with anti-CYP24A1 antibody (Cat#1448, 1:5,000) and HRP-conjugated goat anti-rabbit secondary antibody (Cat#201, 1:20,000) respectively. Image was developed using FeQ™ ECL Substrate Kit (Cat#226).