

Anti-Actinin alpha 3 Recombinant Rabbit Monoclonal Antibody



Catalog #: 1451

Aliases

ACTN3; Actinin Alpha 3; F-Actin Cross-Linking Protein; Alpha-Actinin-3; Alpha-Actinin Skeletal Muscle Isoform; Actinin Alpha 3 (Gene/Pseudogene); Alpha-Actinin Skeletal Muscle; Actinin, Alpha 3; ACTN3D

Background

Gene Name: ACTN3

NCBI Gene Entry: [89](#)

UniProt Entry: [Q08043](#)

Application Information

Molecular Weight: Predicted, 103 kDa; observed, 103 kDa

Clonality: Rabbit monoclonal antibody

Clone ID: 23GB3625

Species Reactivity: Human, mouse, rat

Applications Tested: Western blotting (WB), immunocytochemistry (IC)

Immunogen

A synthesized peptide derived from human ACTN3

Isotype

Rabbit IgG

Storage Buffer

Supplied in PBS (pH 7.4) containing 50% glycerol, and 0.02% sodium azide.

Storage

Store at -20 °C for one year.

Recommended Dilutions

Western Blotting (WB): 1:1,000-1:5,000

Immunocytochemistry (IC): 1:100-1:1,000

Note: This product is for research use only.

Validation Data

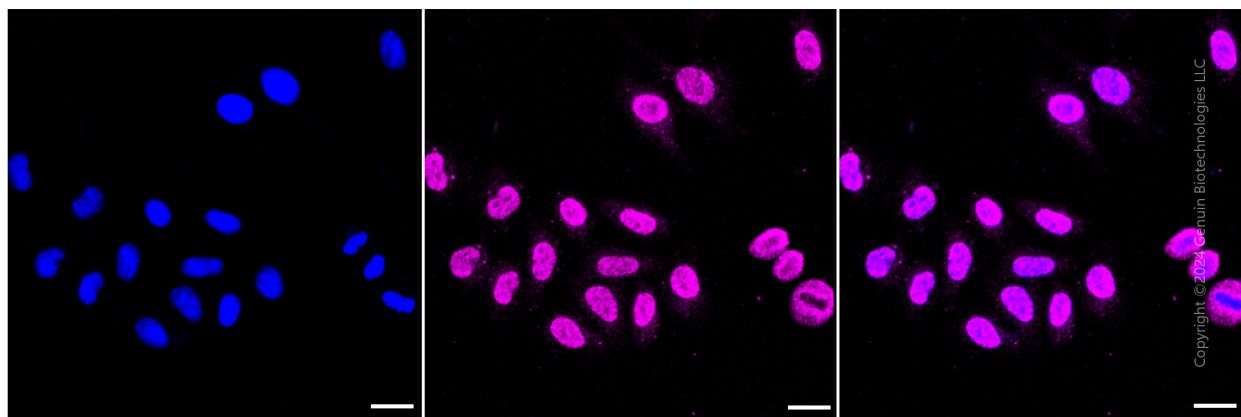
SUPPORT

SUPPORT@GENUINBIOTECH.COM
TEL: +1-540-855-7041

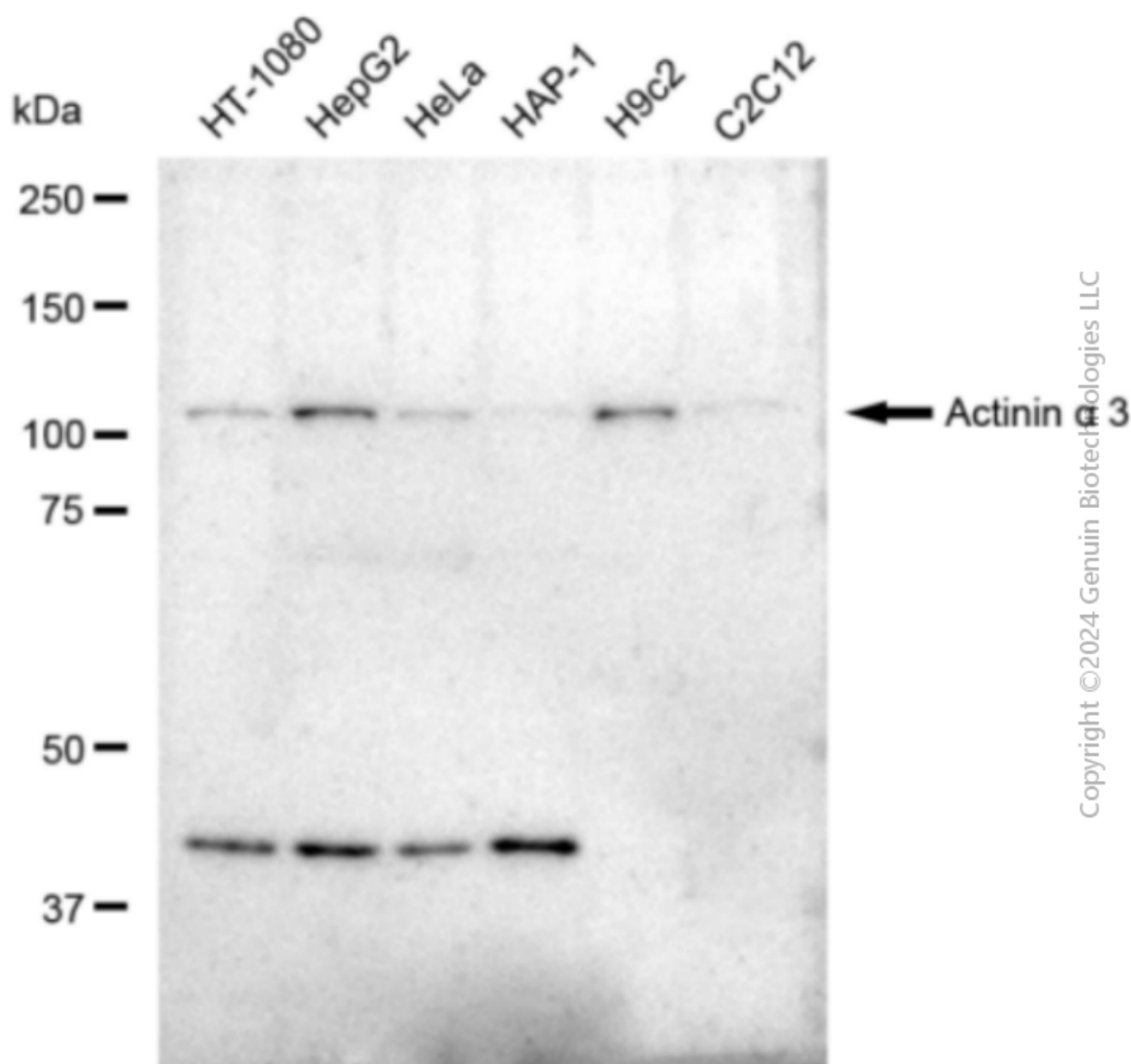
ORDERS

SALES@GENUINBIOTECH.COM
FAX: +1-540-855-7041

WWW.GENUINBIOTECH.COM



Immunocytochemical staining of HepG2 cells with Actinin alpha 3 antibody (Cat#1451, 1:1,000). Nuclei were stained blue with DAPI; Actinin alpha 3 was stained magenta with Alexa Fluor® 647. Images were taken using Leica stellaris 5. Protein abundance based on laser Intensity and smart gain: Medium. Scale bar: 20 μ m.



Western blotting analysis using anti-Actinin alpha 3 antibody (Cat#1451). Total cell lysates (30 μ g) from various cell lines were loaded and separated by SDS-PAGE. The blot was incubated with anti-Actinin alpha 3 antibody (Cat#1451, 1:5,000) and HRP-conjugated goat anti-rabbit secondary antibody (Cat#201, 1:20,000) respectively. Image was developed using FeQ™ ECL Substrate Kit (Cat#226).