

# Anti-DBF4 Recombinant Rabbit Monoclonal Antibody



**Catalog #: 1455**

## Aliases

DBF4; DBF4 Zinc Finger; ZDBF1; DBF4A; ASK; Activator Of S Phase Kinase; DBF4-Type Zinc Finger-Containing Protein 1; Zinc Finger, DBF-Type Containing 1; Protein DBF4 Homolog A; DBF4 Zinc Finger A; Chiffon Homolog A; CHIF; Chiffon Homolog (Drosophila); DBF4 Homolog (S. Cerevisiae); DBF4 Homolog; Chif

## Background

Gene Name: DBF4

NCBI Gene Entry: [10926](#)

UniProt Entry: [Q9UBU7](#)

## Application Information

Molecular Weight: Predicted, 77 kDa; observed, 77 kDa

Clonality: Rabbit monoclonal antibody

Clone ID: 23GB3815

Species Reactivity: Human

Applications Tested: Western blotting (WB), flow cytometry (FCM), immunocytochemistry (IC)

## Immunogen

A synthesized peptide derived from human DBF4

## Isotype

Rabbit IgG

## Storage Buffer

Supplied in PBS (pH 7.4) containing 50% glycerol, and 0.02% sodium azide.

## Storage

Store at -20 °C for one year.

## Recommended Dilutions

Western Blotting (WB): 1:1,000-1:5,000

Flow Cytometry (FCM): 1:2,000

Immunocytochemistry (IC): 1:100-1:1,000

---

### SUPPORT

SUPPORT@GENUINBIOTECH.COM  
TEL: +1-540-855-7041

### ORDERS

SALES@GENUINBIOTECH.COM  
FAX: +1-540-855-7041

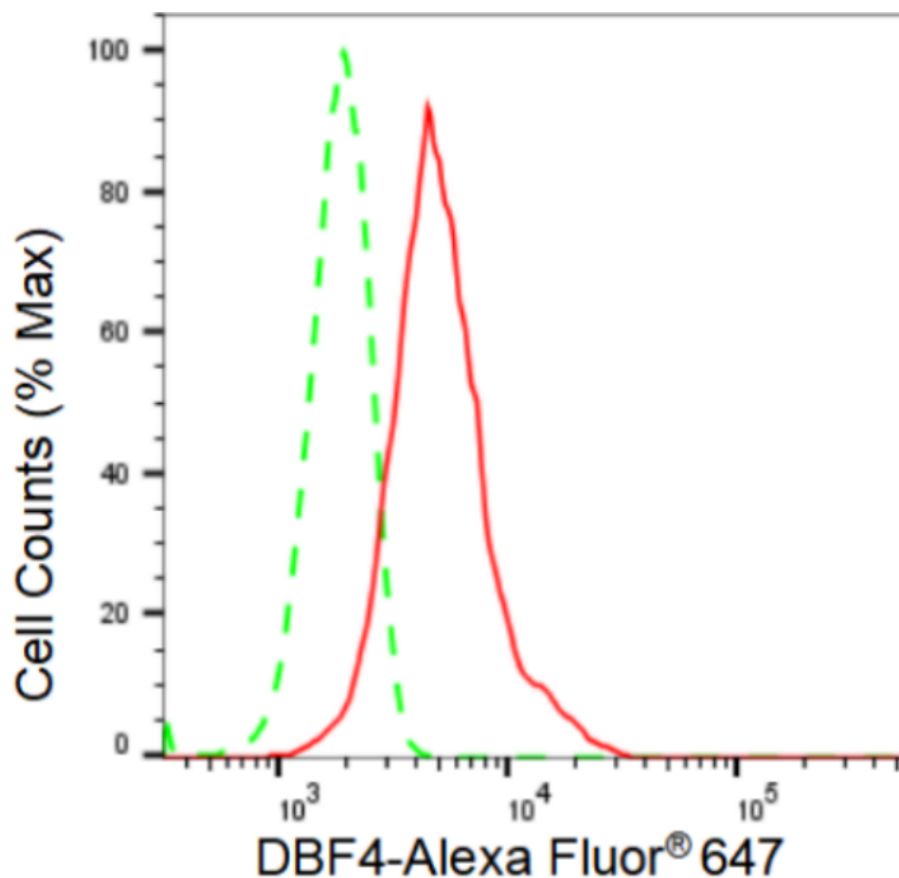
[WWW.GENUINBIOTECH.COM](http://WWW.GENUINBIOTECH.COM)

# Anti-DBF4 Recombinant Rabbit Monoclonal Antibody

PAGE 2

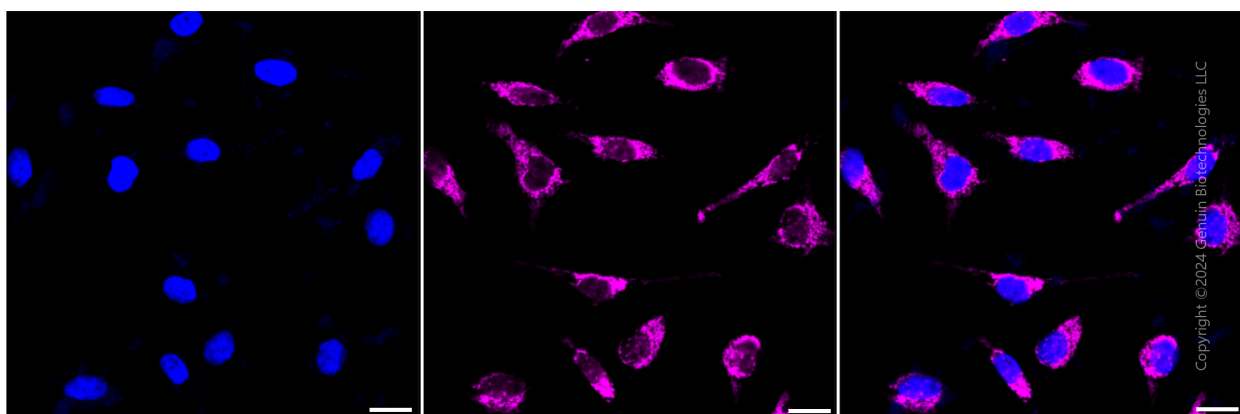
**Note:** This product is for research use only.

## Validation Data



Copyright ©2024 Genuin Biotechnologies LLC

Flow cytometric analysis of DBF4 expression in HeLa cells using DBF4 antibody (Cat#1455, 1:2,000). Green, isotype control; red, DBF4.



Copyright ©2024 Genuin Biotechnologies LLC

### SUPPORT

SUPPORT@GENUINBIOTECH.COM  
TEL: +1-540-855-7041

### ORDERS

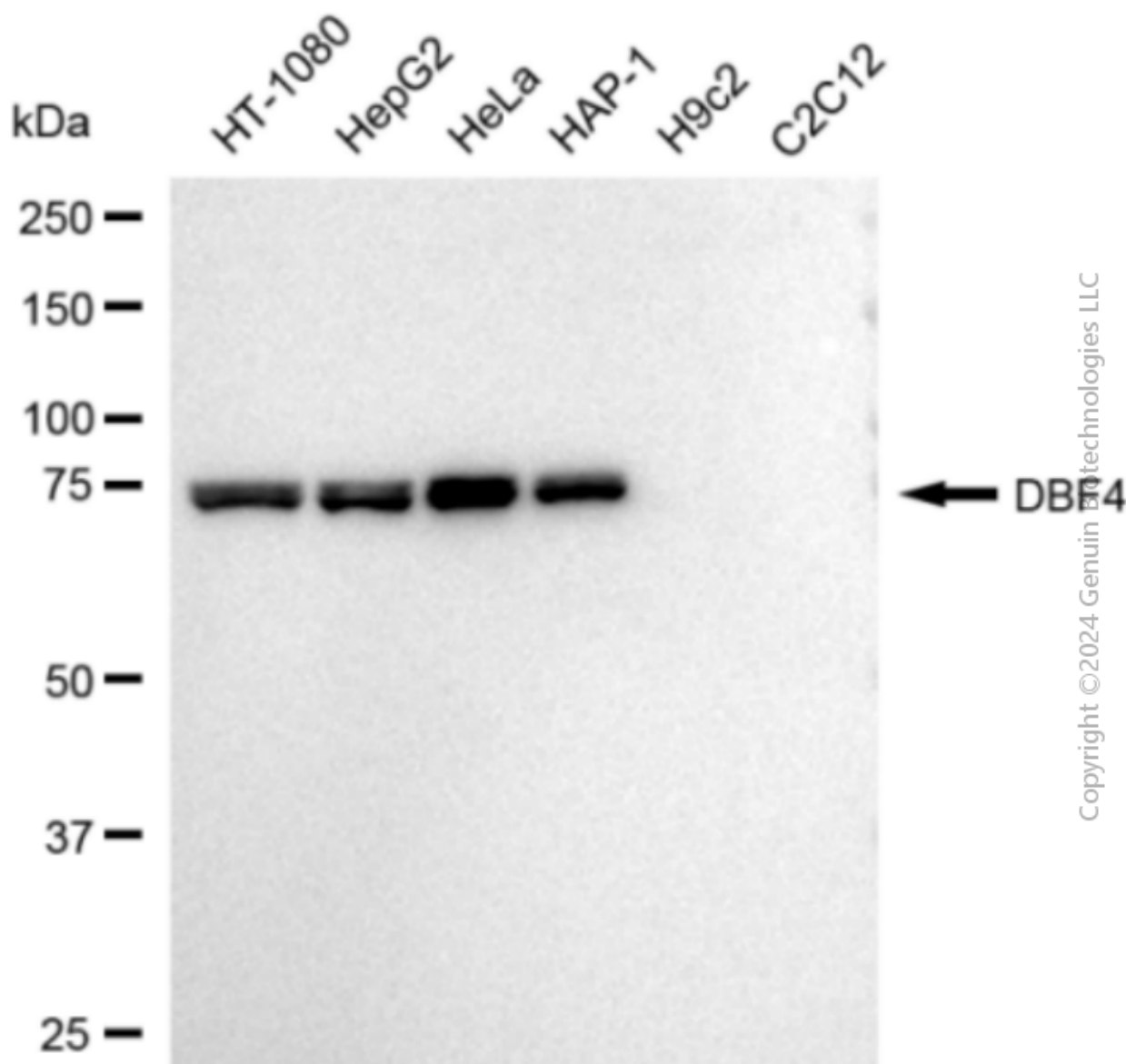
SALES@GENUINBIOTECH.COM  
FAX: +1-540-855-7041

[WWW.GENUINBIOTECH.COM](http://WWW.GENUINBIOTECH.COM)

## Anti-DBF4 Recombinant Rabbit Monoclonal Antibody

PAGE 3

Scale bar: 20  $\mu$ m.



Western blotting analysis using anti-DBF4 antibody (Cat#1455). Total cell lysates (30  $\mu$ g) from various cell lines were loaded and separated by SDS-PAGE. The blot was incubated with anti-DBF4 antibody (Cat#1455, 1:5,000) and HRP-conjugated goat anti-rabbit secondary antibody (Cat#201, 1:20,000) respectively. Image was developed using FeQ™ ECL Substrate Kit (Cat#226).

### SUPPORT

SUPPORT@GENUINBIOTECH.COM  
TEL: +1-540-855-7041

### ORDERS

SALES@GENUINBIOTECH.COM  
FAX: +1-540-855-7041

WWW.GENUINBIOTECH.COM