

## Catalog #: 1463

### Aliases

Atypical Chemokine Receptor 3; GPR159; RDC1; Chemokine Orphan Receptor 1; CMKOR1; CXCR7; G-Protein Coupled Receptor RDC1 Homolog; Chemokine (C-X-C Motif) Receptor 7; C-X-C Chemokine Receptor Type 7; G-Protein Coupled Receptor 159; CXC-R7; CXCR-7; RDC-1; G Protein-Coupled Receptor

### Background

Gene Name: ACKR3

NCBI Gene Entry: [57007](#)

UniProt Entry: [P25106](#)

### Application Information

Molecular Weight: Predicted, 41 kDa; observed, 41 kDa

Clonality: Rabbit monoclonal antibody

Clone ID: 23GB1080

Species Reactivity: Human, mouse, rat

Applications Tested: Western blotting (WB), flow cytometry (FCM), immunocytochemistry (IC)

### Immunogen

Recombinant protein of human RDC1

### Isotype

Rabbit IgG

### Storage Buffer

Supplied in PBS (pH 7.4) containing 50% glycerol, and 0.02% sodium azide.

### Storage

Store at -20 °C for one year.

### Recommended Dilutions

Western Blotting (WB): 1:1,000-1:5,000

Flow Cytometry (FCM): 1:2,000

Immunocytochemistry (IC): 1:100-1:1,000

---

#### SUPPORT

SUPPORT@GENUINBIOTECH.COM  
TEL: +1-540-855-7041

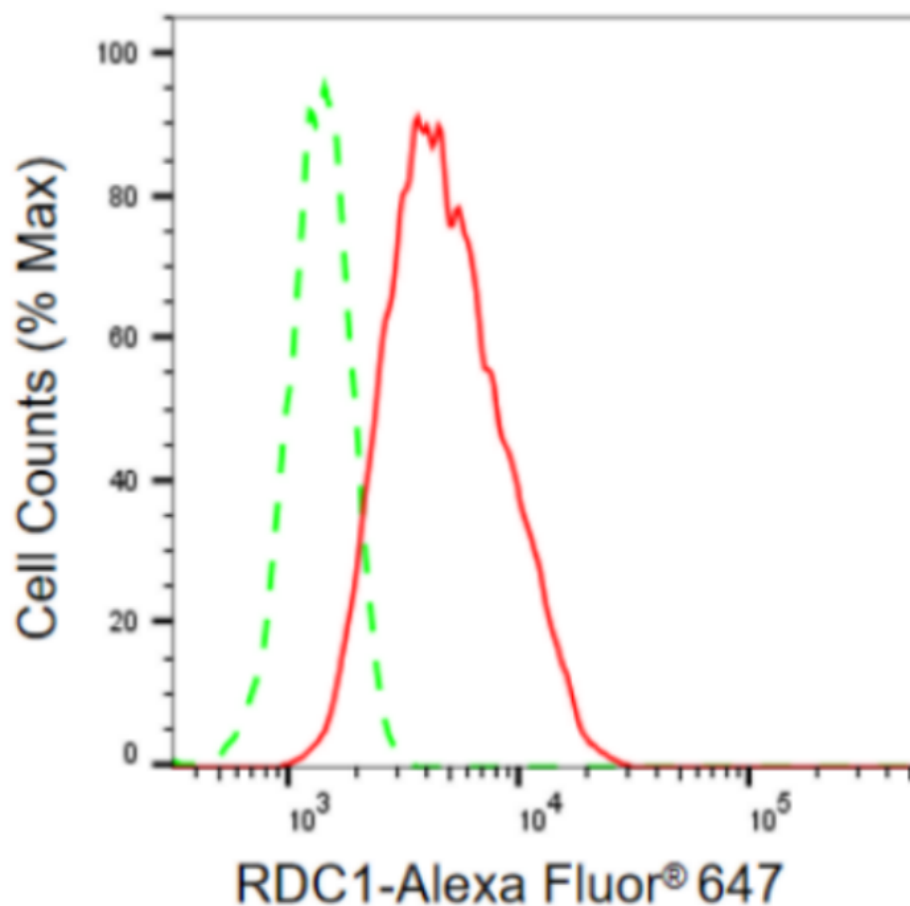
#### ORDERS

SALES@GENUINBIOTECH.COM  
FAX: +1-540-855-7041

[WWW.GENUINBIOTECH.COM](http://WWW.GENUINBIOTECH.COM)

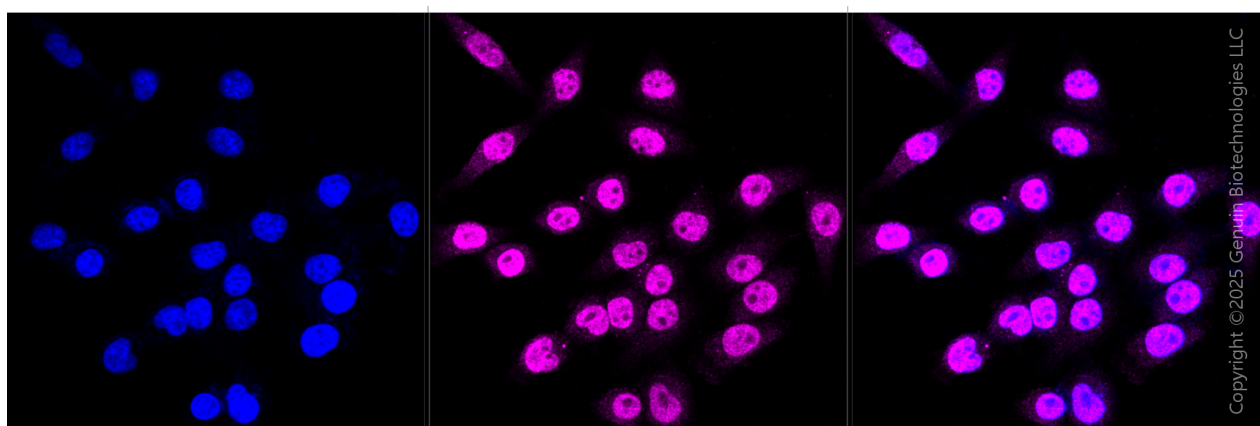
**Note:** This product is for research use only.

## Validation Data



Copyright ©2024 Genuin Biotechnologies LLC

Flow cytometric analysis of RDC1 expression in HepG2 cells using RDC1 antibody (Cat#1463, 1:2,000). Green, isotype control; red, RDC1.



Copyright ©2025 Genuin Biotechnologies LLC

Immunocytochemical staining of HepG2 cells with anti-RDC1 antibody (Cat#1463, 1:1,000). Nuclei were stained blue with DAPI; RDC1 was stained magenta with Alexa Fluor® 647. Images

### SUPPORT

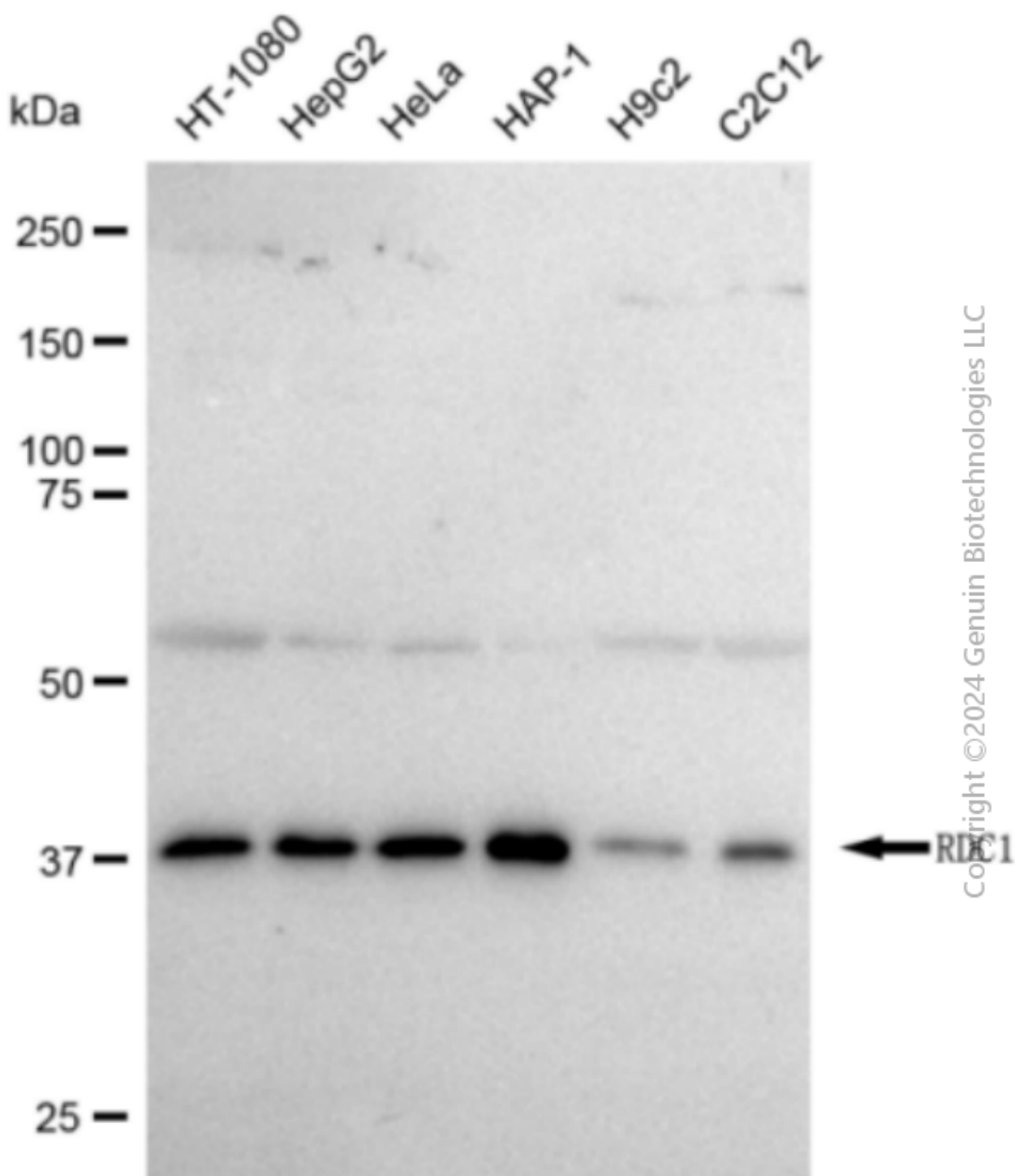
SUPPORT@GENUINBIOTECH.COM  
TEL: +1-540-855-7041

### ORDERS

SALES@GENUINBIOTECH.COM  
FAX: +1-540-855-7041

WWW.GENUINBIOTECH.COM

were taken using Leica stellaris 5. Protein abundance based on laser Intensity and smart gain: High. Scale bar, 20  $\mu$ m.



Western blotting analysis using anti-RDC1 antibody (Cat#1463). Total cell lysates (30  $\mu$ g) from various cell lines were loaded and separated by SDS-PAGE. The blot was incubated with anti-RDC1 antibody (Cat#1463, 1:5,000) and HRP-conjugated goat anti-rabbit secondary antibody (Cat#201, 1:50,000) respectively. Image was developed using FeQ™ ECL Substrate Kit

(Cat#226).

---

**SUPPORT**

SUPPORT@GENUINBIOTECH.COM  
TEL: +1-540-855-7041

**ORDERS**

SALES@GENUINBIOTECH.COM  
FAX:+1-540-855-7041

**[WWW.GENUINBIOTECH.COM](http://WWW.GENUINBIOTECH.COM)**