

Anti-CLPX Recombinant Rabbit Monoclonal Antibody



Catalog #: 1468

Aliases

Caseinolytic Mitochondrial Matrix Peptidase Chaperone Subunit X; ATP-Dependent Clp Protease ATP-Binding Subunit ClpX-Like, Mitochondrial; ClpX (Caseinolytic Protease X, E. Coli) Homolog ; ClpX Caseinolytic Protease X Homolog (E. Coli); Energy-Dependent Regulator Of Proteolysis; ClpX Caseinolytic Peptidase X Homolog; ClpX Caseinolytic Protease X Homolog; EPP2

Background

Gene Name: CLPX

NCBI Gene Entry: [10845](#)

UniProt Entry: [O76031](#)

Application Information

Molecular Weight: Predicted, 69 kDa; observed, 60 kDa

Clonality: Rabbit monoclonal antibody

Clone ID: 23GB1745

Species Reactivity: Human, mouse, rat

Applications Tested: Western blotting (WB), flow cytometry (FCM), immunocytochemistry (IC)

Immunogen

A synthesized peptide derived from human CLPX

Isotype

Rabbit IgG

Storage Buffer

Supplied in PBS (pH 7.4) containing 50% glycerol, and 0.02% sodium azide.

Storage

Store at -20 °C for one year.

Recommended Dilutions

Western Blotting (WB): 1:1,000-1:5,000

Flow Cytometry (FCM): 1:2,000

Immunocytochemistry (IC): 1:100-1:1,000

SUPPORT

SUPPORT@GENUINBIOTECH.COM
TEL: +1-540-855-7041

ORDERS

SALES@GENUINBIOTECH.COM
FAX: +1-540-855-7041

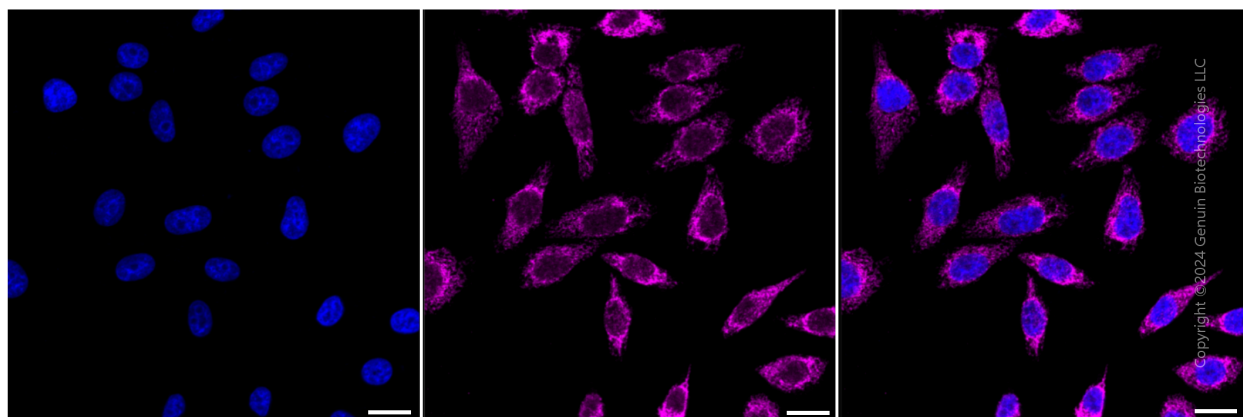
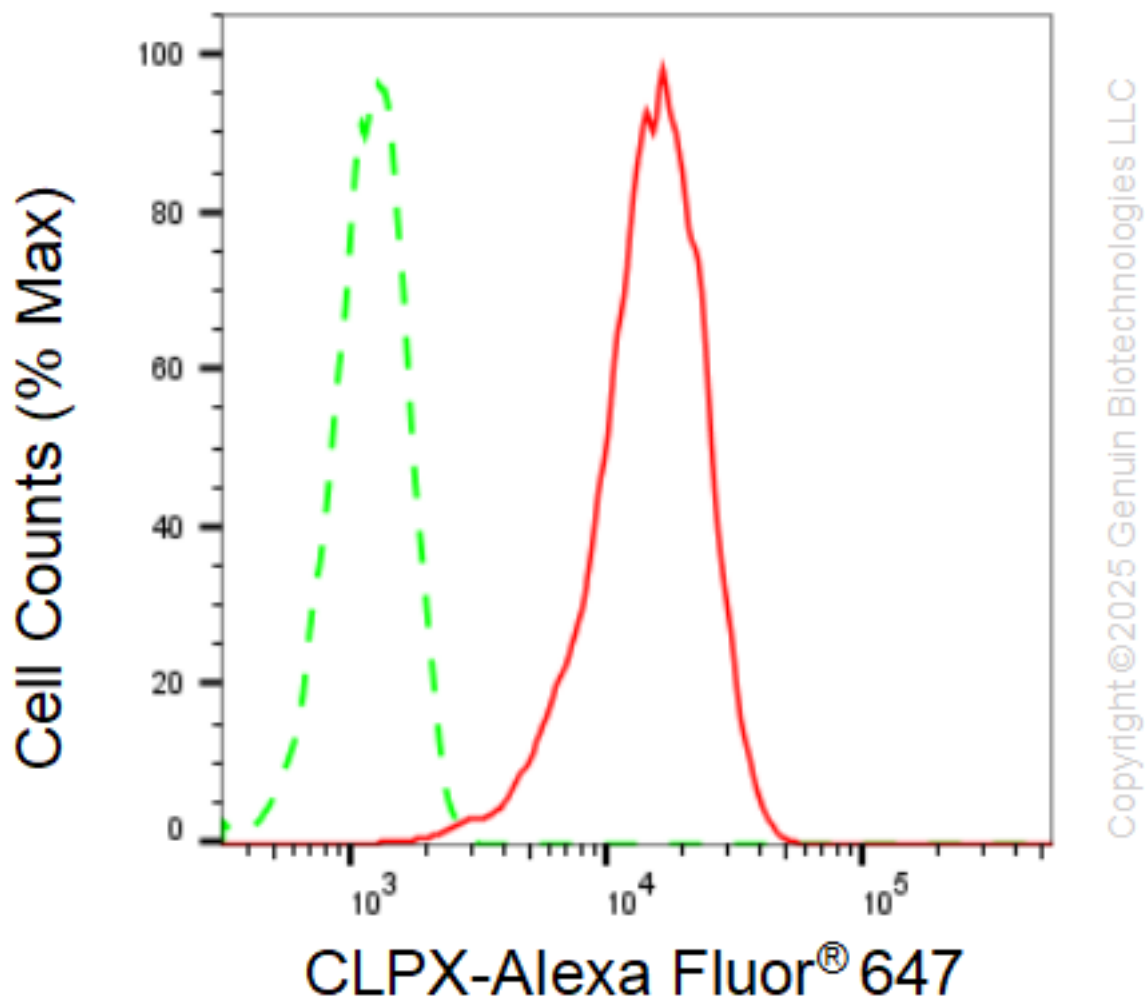
WWW.GENUINBIOTECH.COM

Anti-CLPX Recombinant Rabbit Monoclonal Antibody

PAGE 2

Note: This product is for research use only.

Validation Data



SUPPORT

SUPPORT@GENUINBIOTECH.COM
TEL: +1-540-855-7041

ORDERS

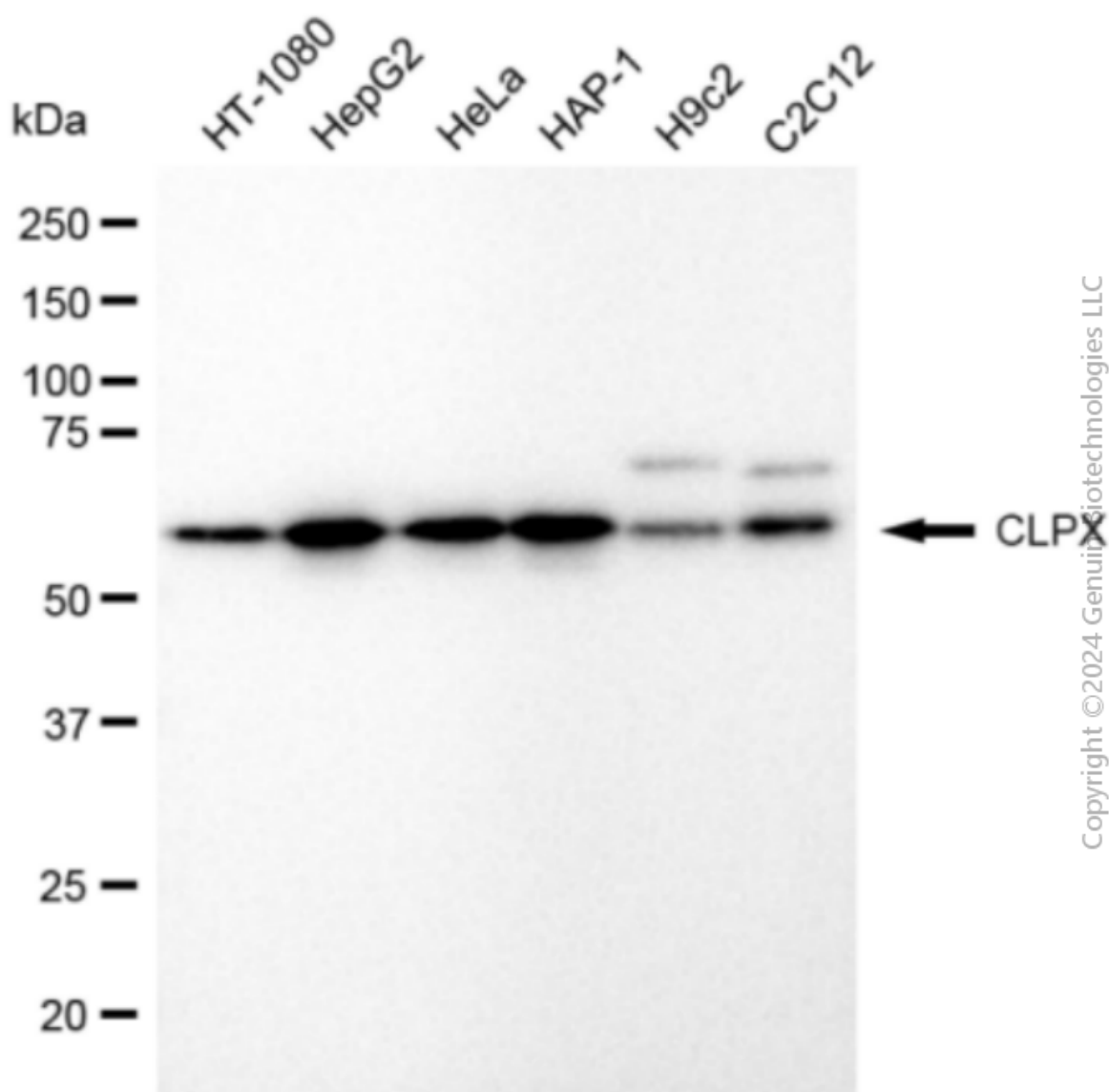
SALES@GENUINBIOTECH.COM
FAX: +1-540-855-7041

WWW.GENUINBIOTECH.COM

Anti-CLPX Recombinant Rabbit Monoclonal Antibody

PAGE 3

Immunocytochemical staining of HepG2 cells with CLPX antibody (Cat#1468, 1:1,000). Nuclei were stained blue with DAPI; CLPX was stained magenta with Alexa Fluor® 647. Images were taken using Leica stellaris 5. Protein abundance based on laser Intensity and smart gain: Medium. Scale bar: 20 μ m.



Western blotting analysis using anti-CLPX antibody (Cat#1468). Total cell lysates (30 μ g) from various cell lines were loaded and separated by SDS-PAGE. The blot was incubated with anti-CLPX antibody (Cat#1468, 1:5,000) and HRP-conjugated goat anti-rabbit secondary antibody (Cat#201, 1:20,000) respectively. Image was developed using FeQ™ ECL Substrate Kit (Cat#226). CLPX, caseinolytic mitochondrial matrix peptidase chaperone subunit X.

SUPPORT

SUPPORT@GENUINBIOTECH.COM
TEL: +1-540-855-7041

ORDERS

SALES@GENUINBIOTECH.COM
FAX: +1-540-855-7041

WWW.GENUINBIOTECH.COM