

Anti-Ribosomal protein S6 kinase A3 Recombinant Rabbit Monoclonal Antibody



Catalog #: 1470

Aliases

CLS; HU2; HU3; Insulin stimulated protein kinase 1; ISPK1; MAP kinase activated protein kinase 1b; MAPKAP kinase 1b; MAPKAPK 1b; MAPKAPK1B; MRX19; p90 RSK2; p90 RSK3; p90RSK3; pp90RSK2; Ribosomal protein S6 kinase alpha 3; Ribosomal protein s6 kinase ii; RSK

Background

Gene Name: RPS6KA3

NCBI Gene Entry: [6197](#)

UniProt Entry: [P51812](#)

Application Information

Molecular Weight: Predicted, 84 kDa; observed, 75 kDa

Clonality: Rabbit monoclonal antibody

Clone ID: 23GB1530

Species Reactivity: Human, mouse, rat

Applications Tested: Western blotting (WB), flow cytometry (FCM), immunocytochemistry (IC)

Immunogen

A synthesized peptide derived from human RSK2 / RPS6KA3

Isotype

Rabbit IgG

Storage Buffer

Supplied in PBS (pH 7.4) containing 50% glycerol, and 0.02% sodium azide.

Storage

Store at -20 °C for one year.

Recommended Dilutions

Western Blotting (WB): 1:1,000-1:5,000

Flow Cytometry (FCM): 1:2,000

Immunocytochemistry (IC): 1:100-1:1,000

Note: This product is for research use only.

SUPPORT

SUPPORT@GENUINBIOTECH.COM
TEL: +1-540-855-7041

ORDERS

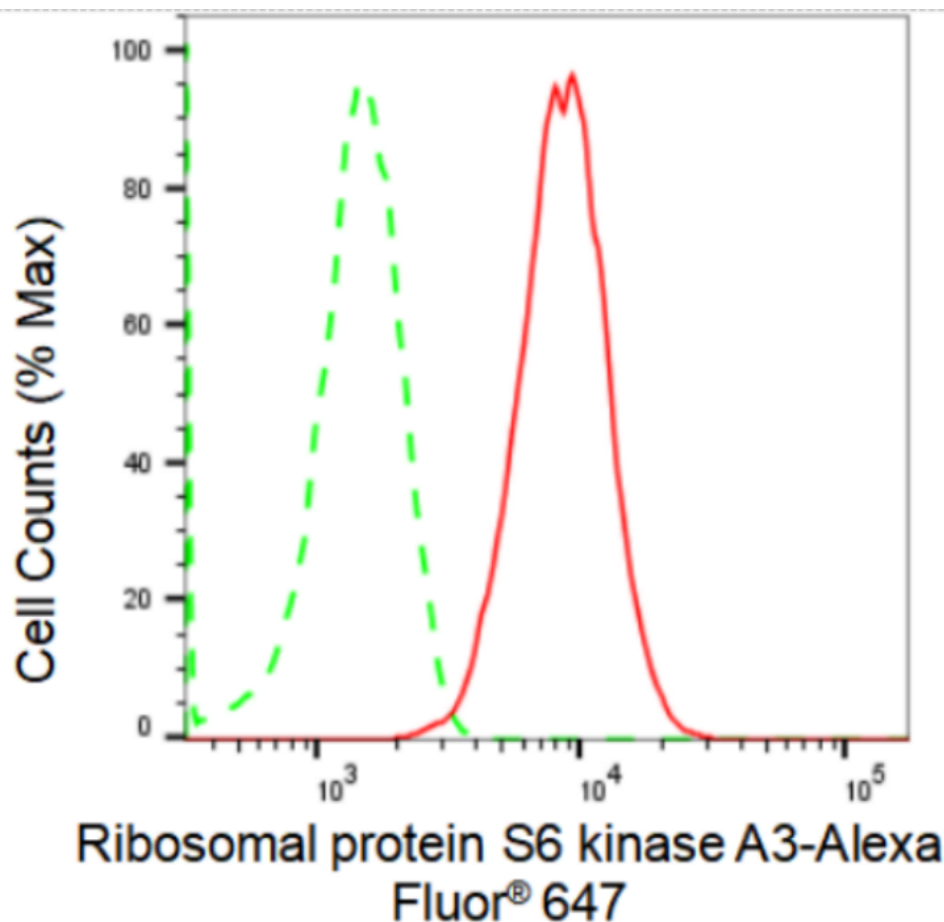
SALES@GENUINBIOTECH.COM
FAX: +1-540-855-7041

WWW.GENUINBIOTECH.COM

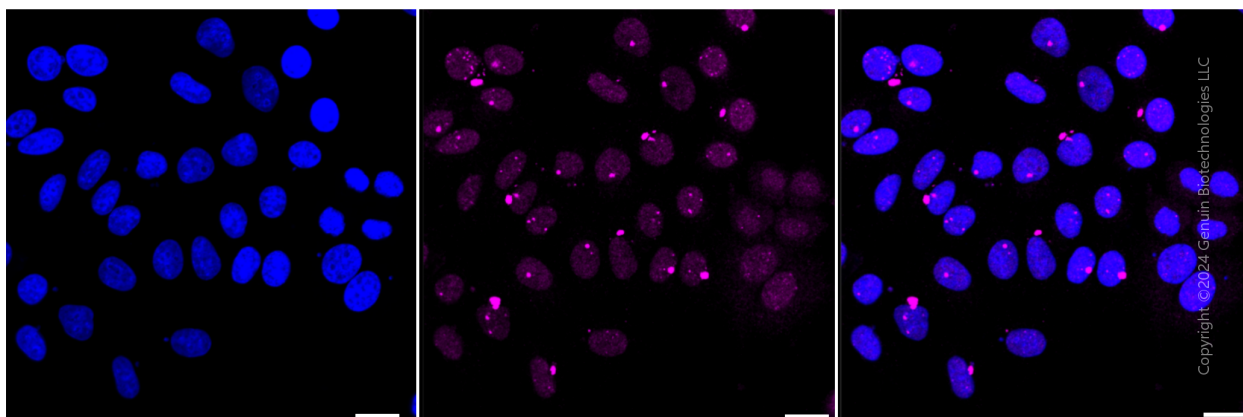
Anti-Ribosomal protein S6 kinase A3 Recombinant Rabbit Monoclonal Antibody

PAGE 2

Validation Data



Flow cytometric analysis of Ribosomal protein S6 kinase A3 expression in HepG2 cells using Ribosomal protein S6 kinase A3 antibody (Cat#1470, 1:2,000). Green, isotype control; red, Ribosomal protein S6 kinase A3.



Immunocytochemical staining of HepG2 cells with Ribosomal protein S6 kinase A3 antibody (Cat#1470, 1:1,000). Nuclei were stained blue with DAPI; Ribosomal protein S6 kinase A3 was stained magenta with Alexa Fluor® 647. Images were taken using Leica stellaris 5. Protein

SUPPORT

SUPPORT@GENUINBIOTECH.COM
TEL: +1-540-855-7041

ORDERS

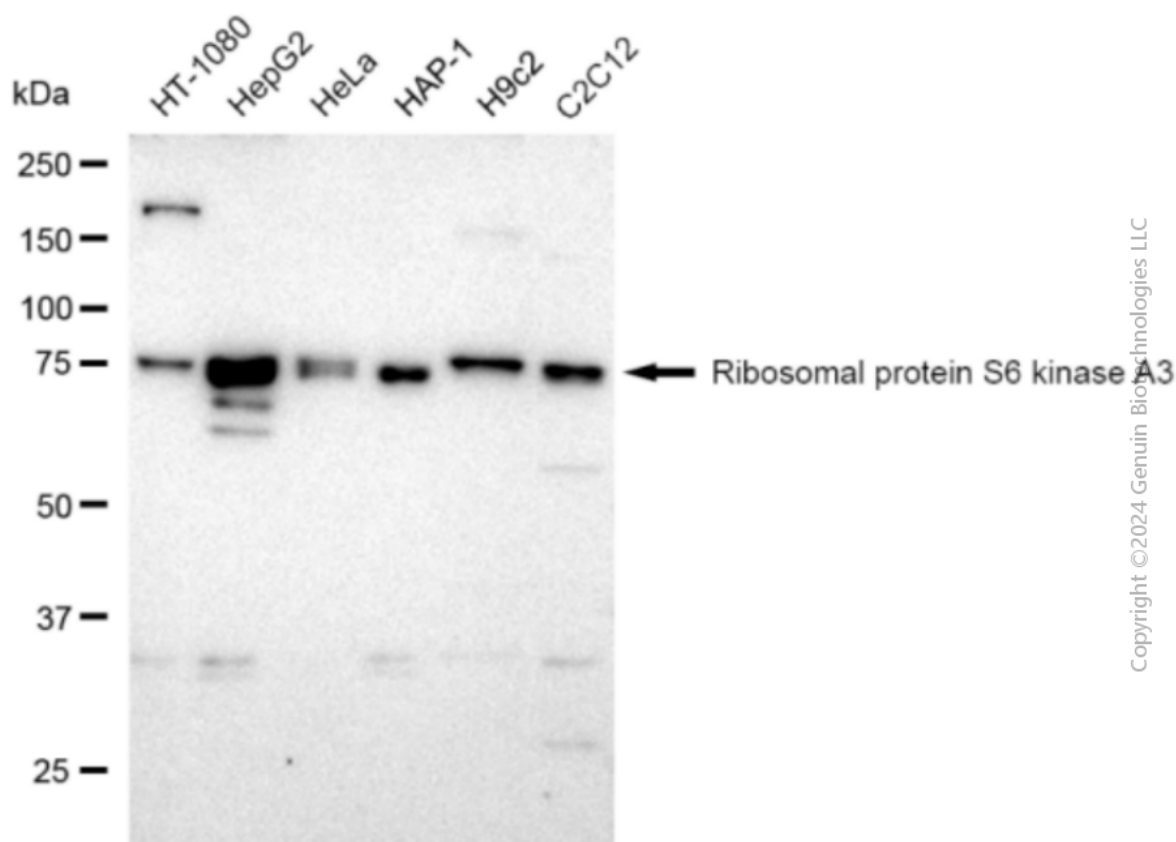
SALES@GENUINBIOTECH.COM
FAX: +1-540-855-7041

WWW.GENUINBIOTECH.COM

Anti-Ribosomal protein S6 kinase A3 Recombinant Rabbit Monoclonal Antibody

PAGE 3

abundance based on laser Intensity and smart gain: Medium. Scale bar: 20 μ m.



Western blotting analysis using anti-Ribosomal protein S6 kinase A3 antibody (Cat#1470). Total cell lysates (30 μ g) from various cell lines were loaded and separated by SDS-PAGE. The blot was incubated with anti-Ribosomal protein S6 kinase A3 antibody (Cat#1470, 1:5,000) and HRP-conjugated goat anti-rabbit secondary antibody (Cat#201, 1:20,000) respectively. Image was developed using FeQ™ ECL Substrate Kit (Cat#226).

SUPPORT

SUPPORT@GENUINBIOTECH.COM
TEL: +1-540-855-7041

ORDERS

SALES@GENUINBIOTECH.COM
FAX: +1-540-855-7041

WWW.GENUINBIOTECH.COM