

# Anti-DCAF7 Recombinant Rabbit Monoclonal Antibody



**Catalog #: 1567**

## Aliases

DCAF7; DDB1 And CUL4 Associated Factor 7; HAN11; SWAN-1; WDR68; Seven-WD-Repeat Protein Of The AN11 Family-1; WD Repeat-Containing Protein An11 Homolog; DDB1- And CUL4-Associated Factor 7; WD Repeat-Containing Protein 68; Human Anthocyanin; WD Repeat Domain 68; AN11

## Background

Gene Name: DCAF7

NCBI Gene Entry: [10238](#)

UniProt Entry: [P61962](#)

## Application Information

Molecular Weight: Predicted, 39 kDa; observed, 39 kDa

Clonality: Rabbit monoclonal antibody

Clone ID: 23GB3115

Species Reactivity: Human, mouse, rat

Applications Tested: Western blotting (WB), flow cytometry (FCM), immunocytochemistry (IC)

## Immunogen

A synthesized peptide derived from DCAF7

## Isotype

Rabbit IgG

## Storage Buffer

Supplied in PBS (pH 7.4) containing 50% glycerol, and 0.02% sodium azide.

## Storage

Store at -20 °C for one year.

## Recommended Dilutions

Western Blotting (WB): 1:1,000-1:5,000

Flow Cytometry (FCM): 1:2,000

Immunocytochemistry (IC): 1:100-1:1,000

---

### SUPPORT

SUPPORT@GENUINBIOTECH.COM  
TEL: +1-540-855-7041

### ORDERS

SALES@GENUINBIOTECH.COM  
FAX: +1-540-855-7041

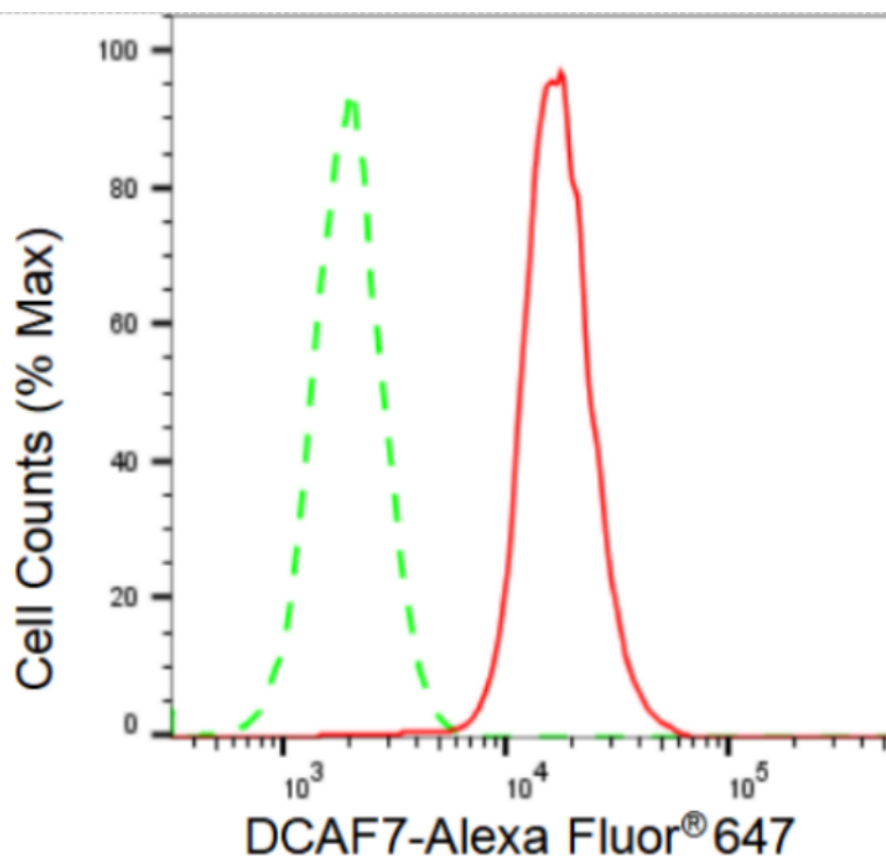
[WWW.GENUINBIOTECH.COM](http://WWW.GENUINBIOTECH.COM)

# Anti-DCAF7 Recombinant Rabbit Monoclonal Antibody

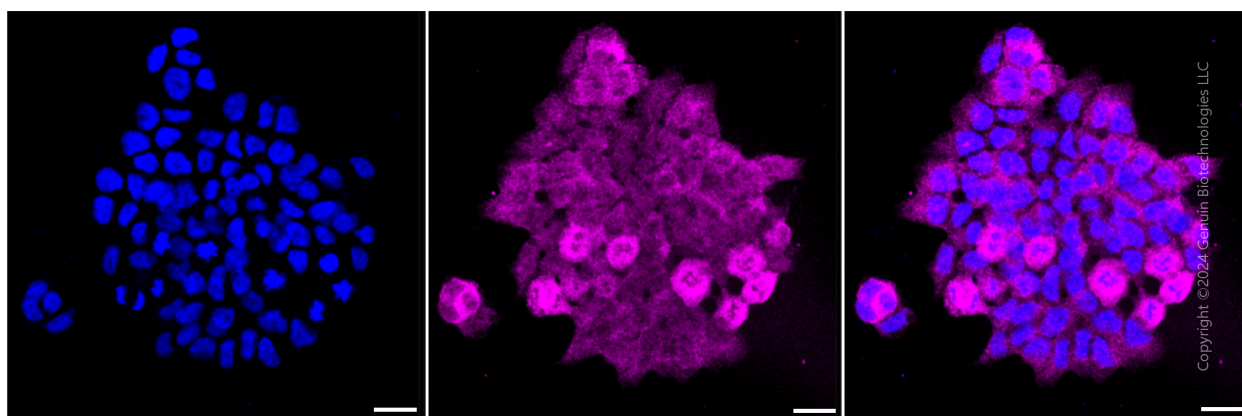
PAGE 2

**Note:** This product is for research use only.

## Validation Data



Flow cytometric analysis of DCAF7 expression in HAP-1 cells using DCAF7 antibody (Cat#1567, 1:2,000). Green, isotype control; red, DCAF7.



Immunocytochemical staining of HAP-1 cells with DCAF7 antibody (Cat#1567, 1:1,000). Nuclei were stained blue with DAPI; DCAF7 was stained magenta with Alexa Fluor® 647. Images were taken using Leica stellaris 5. Protein abundance based on laser Intensity and smart gain: Medium. Scale bar: 20  $\mu$ m..

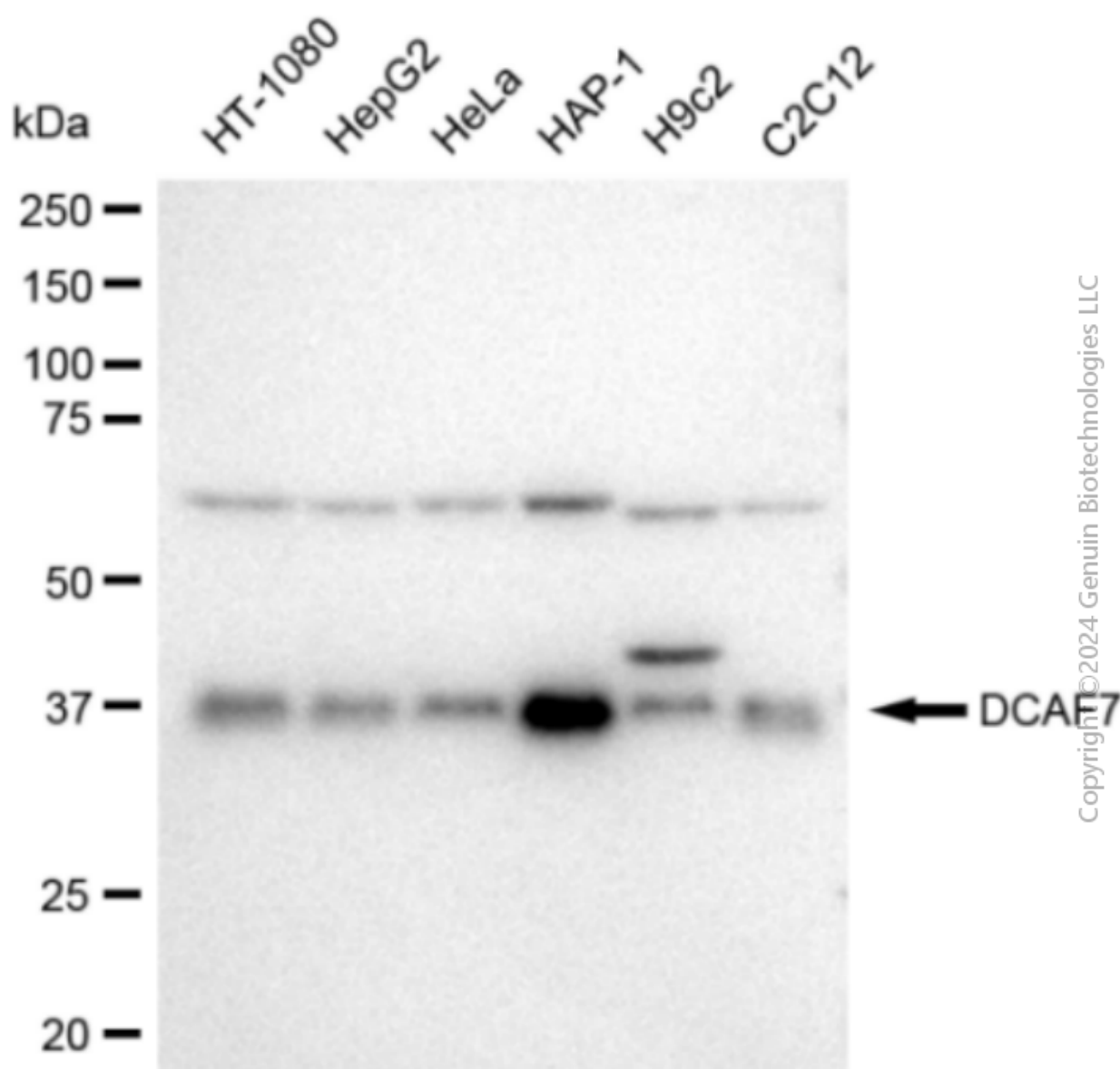
### SUPPORT

SUPPORT@GENUINBIOTECH.COM  
TEL: +1-540-855-7041

### ORDERS

SALES@GENUINBIOTECH.COM  
FAX: +1-540-855-7041

[WWW.GENUINBIOTECH.COM](http://WWW.GENUINBIOTECH.COM)



Western blotting analysis using anti-DCAF7 antibody (Cat#1567). Total cell lysates (30 µg) from various cell lines were loaded and separated by SDS-PAGE. The blot was incubated with anti-DCAF7 antibody (Cat#1567, 1:5,000) and HRP-conjugated goat anti-rabbit secondary antibody (Cat#201, 1:20,000) respectively. Image was developed using FeQ™ ECL Substrate Kit (Cat#226). DCAF7, DDB1 and CUL4 associated factor 7