

# Anti-Actin related protein 1B Recombinant Rabbit Monoclonal Antibody



**Catalog #: 1569**

## Aliases

ACTR1B; Actin Related Protein 1B; ARP1B; CTRN2; ARP1 Actin-Related Protein 1 Homolog B, Centractin Beta; ARP1 Actin Related Protein 1 Homolog B; Centractin Beta; Beta-Centractin; ARP1 (Actin-Related Protein 1, Yeast) Homolog B (Centractin Beta); Actin-Related Protein 1B; Arp1B; PC3

## Background

Gene Name: ACTR1B

NCBI Gene Entry: [10120](#)

UniProt Entry: [P42025](#)

## Application Information

Molecular Weight: Predicted, 42 kDa; observed, 42 kDa

Clonality: Rabbit monoclonal antibody

Clone ID: 23GB3135

Species Reactivity: Human, mouse, rat

Applications Tested: Western blotting (WB), flow cytometry (FCM), immunocytochemistry (IC)

## Immunogen

A synthesized peptide derived from human ACTR1B

## Isotype

Rabbit IgG

## Storage Buffer

Supplied in PBS (pH 7.4) containing 50% glycerol, and 0.02% sodium azide.

## Storage

Store at -20 °C for one year.

## Recommended Dilutions

Western Blotting (WB): 1:1,000-1:5,000

Flow Cytometry (FCM): 1:2,000

Immunocytochemistry (IC): 1:100-1:1,000

---

### SUPPORT

SUPPORT@GENUINBIOTECH.COM  
TEL: +1-540-855-7041

### ORDERS

SALES@GENUINBIOTECH.COM  
FAX: +1-540-855-7041

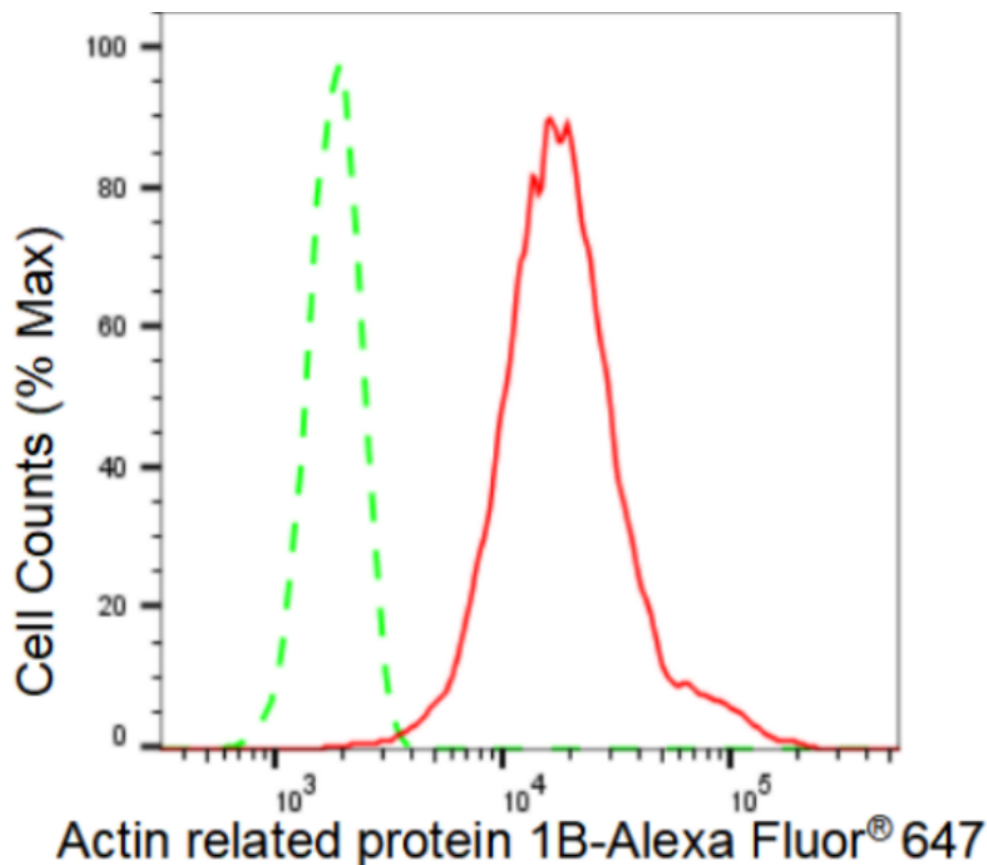
[WWW.GENUINBIOTECH.COM](http://WWW.GENUINBIOTECH.COM)

# Anti-Actin related protein 1B Recombinant Rabbit Monoclonal Antibody

PAGE 2

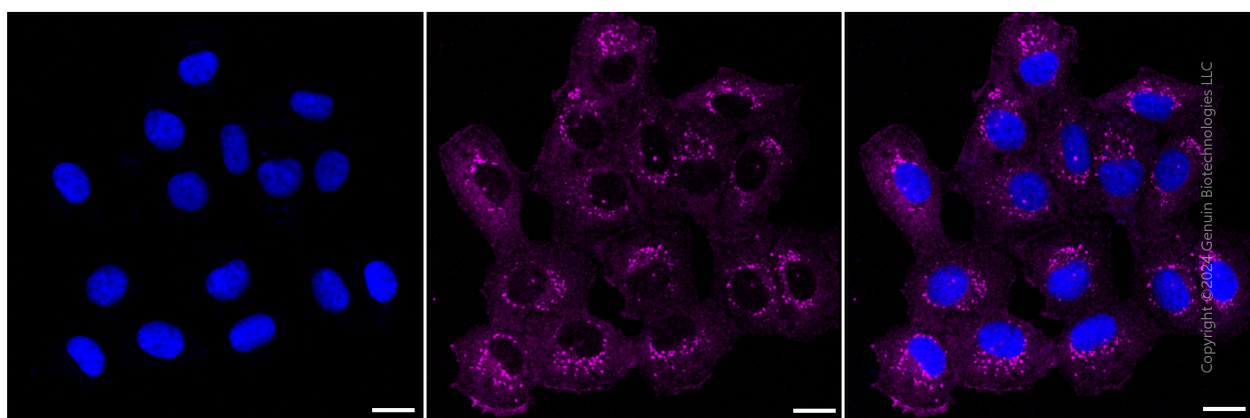
**Note:** This product is for research use only.

## Validation Data



Copyright ©2024 Genuin Biotechnologies LLC

Flow cytometric analysis of Actin related protein 1B expression in HT-1080 cells using Actin related protein 1B antibody (Cat#1569, 1:2,000). Green, isotype control; red, Actin related protein 1B.



Copyright ©2024 Genuin Biotechnologies LLC

### SUPPORT

SUPPORT@GENUINBIOTECH.COM  
TEL: +1-540-855-7041

### ORDERS

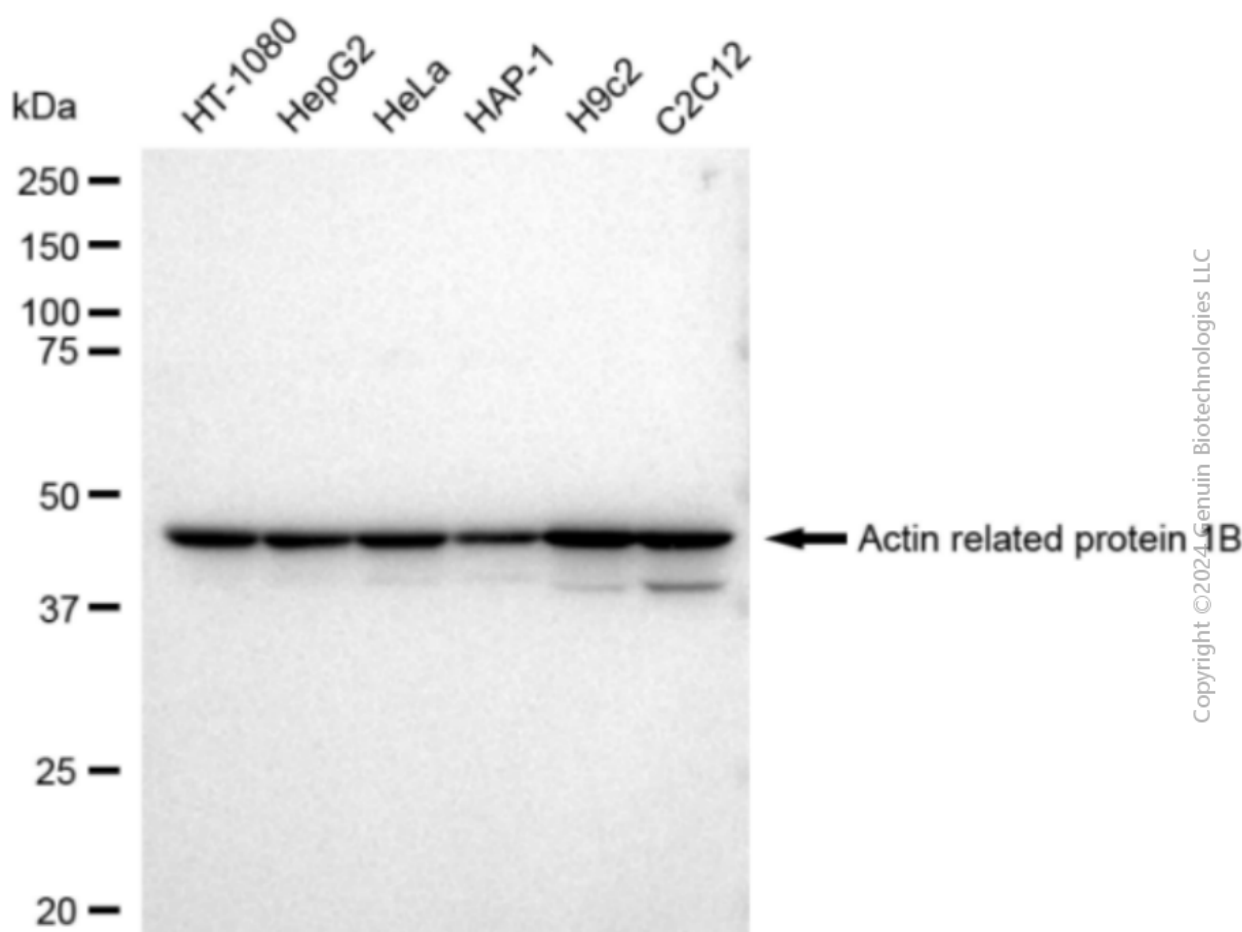
SALES@GENUINBIOTECH.COM  
FAX: +1-540-855-7041

WWW.GENUINBIOTECH.COM

## Anti-Actin related protein 1B Recombinant Rabbit Monoclonal Antibody

PAGE 3

Alexa Fluor® 647. Images were taken using Leica stellaris 5. Protein abundance based on laser Intensity and smart gain: Medium. Scale bar: 20  $\mu$ m.



Copyright ©2024 Genuin Biotechnologies LLC

Western blotting analysis using anti-Actin related protein 1B antibody (Cat#1569). Total cell lysates (30  $\mu$ g) from various cell lines were loaded and separated by SDS-PAGE. The blot was incubated with anti-Actin related protein 1B antibody (Cat#1569, 1:5,000) and HRP-conjugated goat anti-rabbit secondary antibody (Cat#201, 1:20,000) respectively. Image was developed using FeQ™ ECL Substrate Kit (Cat#226).

### SUPPORT

SUPPORT@GENUINBIOTECH.COM  
TEL: +1-540-855-7041

### ORDERS

SALES@GENUINBIOTECH.COM  
FAX: +1-540-855-7041

WWW.GENUINBIOTECH.COM